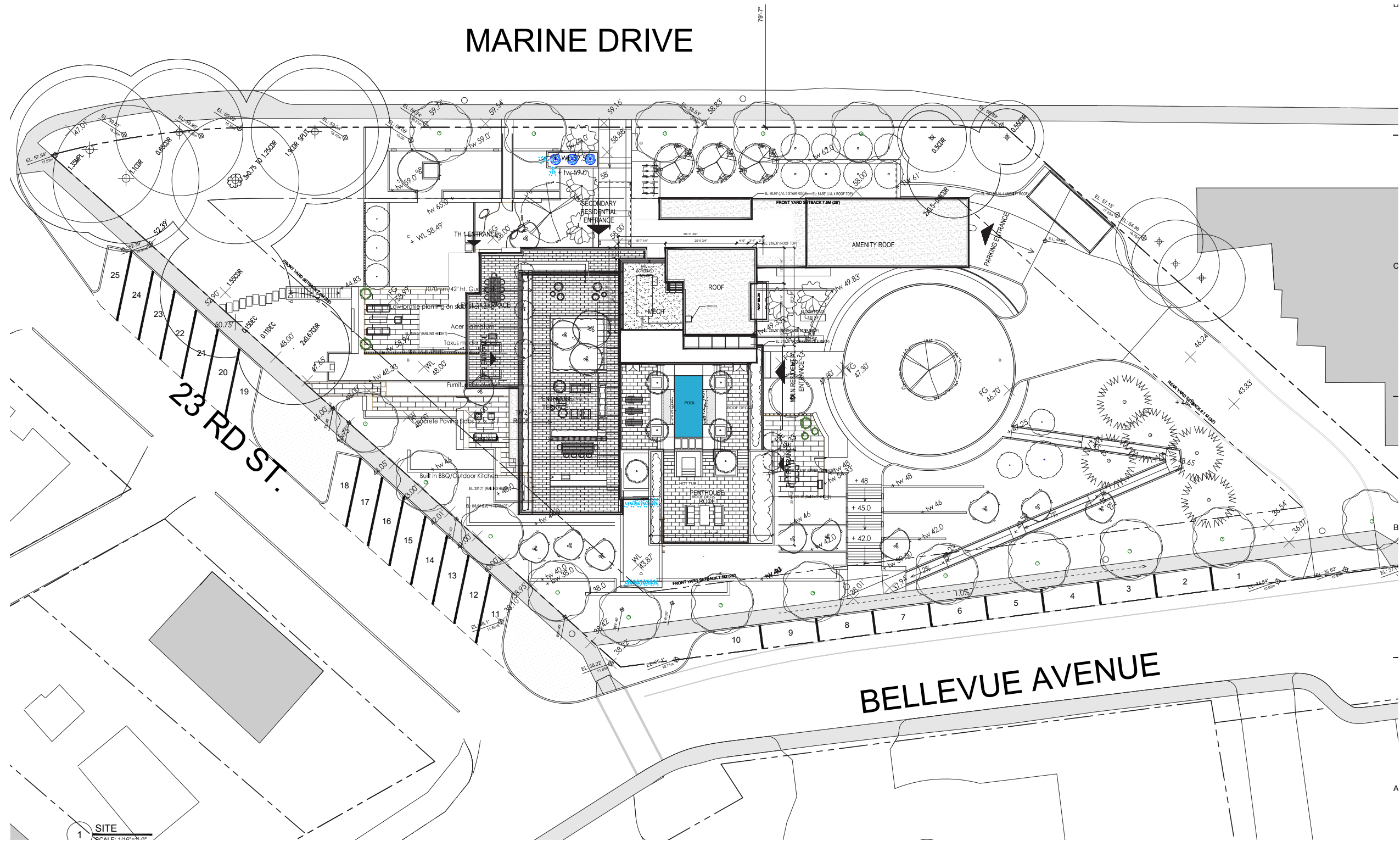
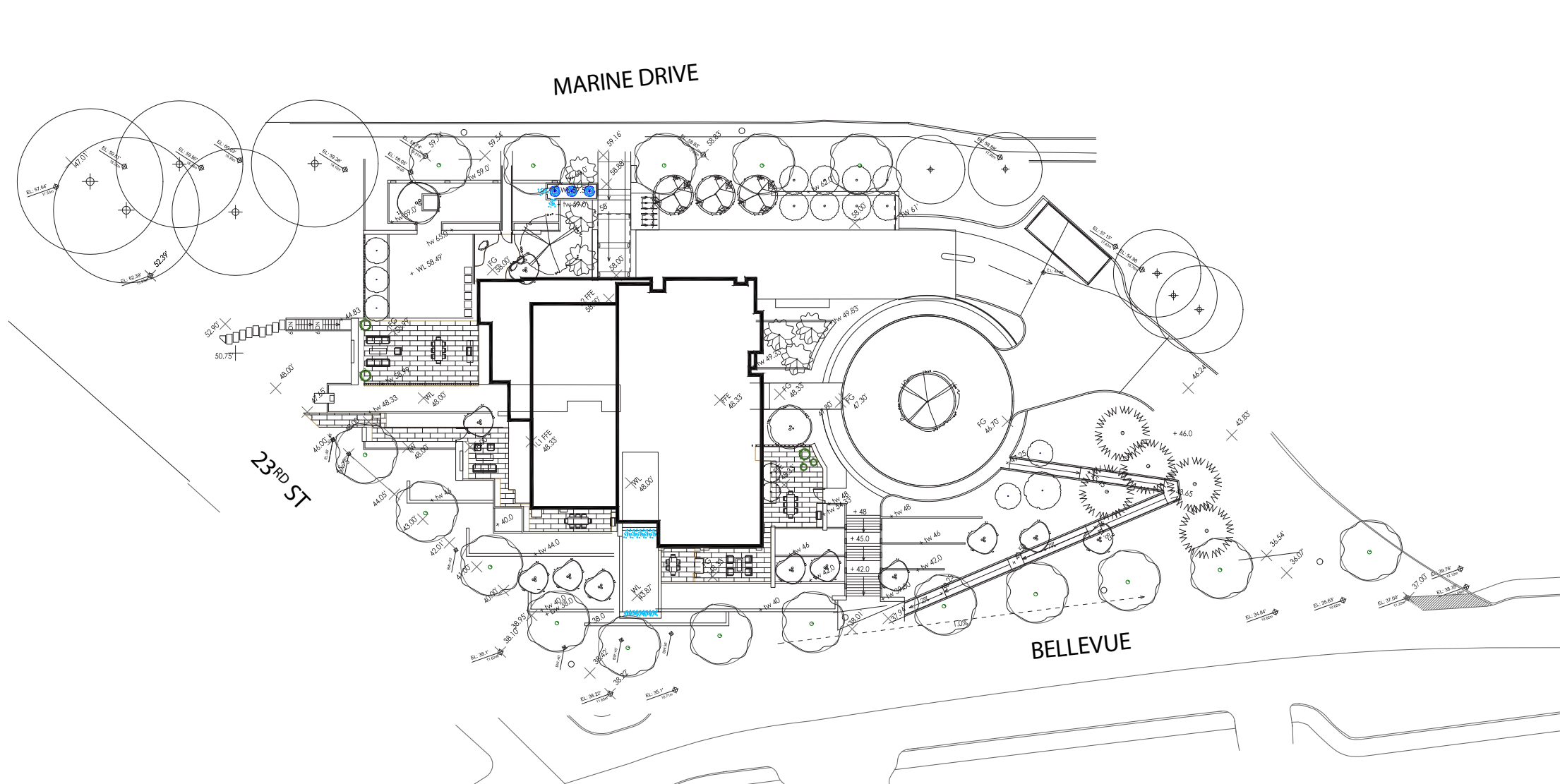


# Site Plan



# Building Grade Calculations - Finished Grades

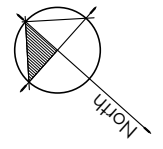
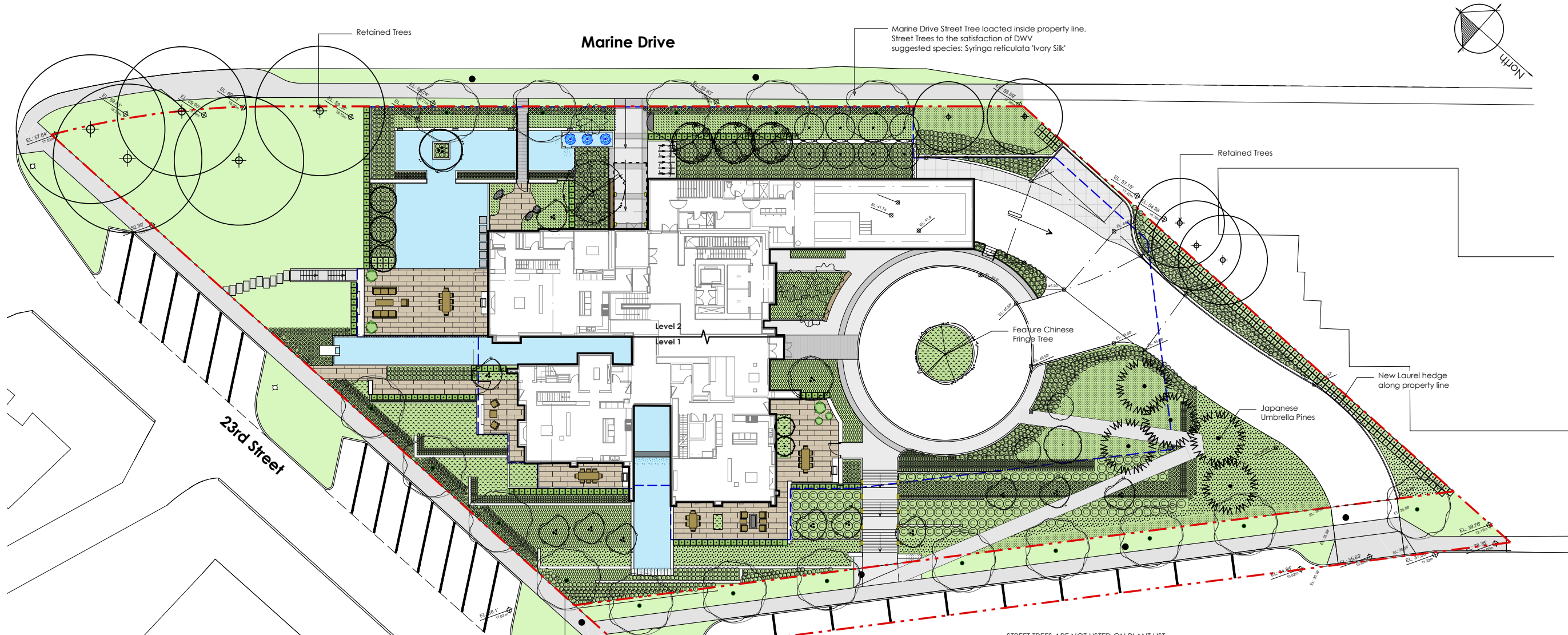


# Landscape Concept



MATERIALS LEGEND		LANDSCAPE NOTES	
	Wood Decking		Planting Bed
	C.I.P. Concrete Paving		Precast Concrete Slab
	Concrete Pavers		Water Feature
	Sodded Lawn		
DRAWING LIST		<ol style="list-style-type: none"> <li>All work shall meet or exceed the requirements as outlined in the current edition of the B.C. Landscape Standard.</li> <li>All 'Soft Landscape Areas' are to be irrigated with a high efficiency irrigation system. A high efficiency irrigation system specified in all common areas, including the entry and upper terrace areas.</li> <li>The irrigation system design and installation shall be in accordance with the Irrigation Industry of BC Standards and Guidelines.</li> <li>All landscaped patios to be provided with a hose bib. Hose bibs should be provided for all patio and common areas greater than 100sq.ft.</li> <li>All planter walls and terrace walls are to be clad in dark basalt.</li> </ol>	
L1.00	TREE RETENTION PLAN		
L1.01	LANDSCAPE PLAN		
L1.02	PLANTING PLAN		
L2.01	SECTIONS		

# Landscape Planting



**PLANTING NOTES**

- All work shall meet or exceed the requirements as outlined in the Current Edition of the B.C. Landscape Standard.
- Plant sizes and related container classes are specified according to the B.C. Landscape Standard, Current Edition. For container classes #3 and smaller, plant sizes shall be as shown in the plant list and the Standard; for all other plants, both plant size and container class shall be as shown in the plant list. Specifically, when the plant list call for #5 class containers, these shall be as defined in the BCNTA (ANSI) Standard.
- All trees to be staked in accordance with BCNTA Standards.

STREET TREES ARE NOT LISTED ON PLANT LIST

Sym	Qty	Botanical Name	Common Name	Size	Comments
	7	Acer Griseum	Paperbark Maple	6cm cal.	4' ht.
	2	Acer palmatum	Japanese maple	2.5m ht.	
	7	Cornus 'Eddies White Wonder'	Eddies White Wonder Dogwood	6cm cal.	4' ht. std.
	9	Fagus sylvatica 'Dawyck'	Daywyck Beech		
	1	Parrotia persica 'Inge's Ruby Vase'	Inge's Ruby Vase		
	4	Prunus serotina 'Snow Goose'	Snow Goose Cherry		
	5	Siewertia pseudocamellia	Deciduous Camellia		
	12	Rhus Typhina	Staghorn Sumac	2.5m ht.	
	6	Sciadopitys verticillata	Japanese Umbrella Pine	3m ht.	symmetrical form, specimen
	1	Chionanthus retusus	Chinese Fringe Tree	2.5m ht.	
<b>Shrubs/Groundcovers</b>					
	1500	Arcostaphylos uva-ursi	kinnikinnick	#1 pot	10' o.c.
	27	Azalea 'Exbury Hybrid'	Exbury Azalea	#5 pot	36" o.c.
	230	Brunnera macrophylla 'Jack Frost'	Siberian bugloss 'Jack Frost'	#2 pot	18" o.c.
	200	Cholsya ternata 'Aztec Pearl'	Aztec Pearl Mexican Orange	#3 pot	3' o.c.
	650	Dryopteris erythrosora	Autumn Fern	#1 pot	18" o.c.
	100	Juncus effusus	Common Rush	#1 pot	12" o.c.
	770	Euphorbia c. Wulfenii	Spurge	#3 pot	18" o.c.
	310	Lonicera pileolata	Privet Honeysuckle	#3 pot	18" o.c.
	50	Miscanthus sinensis 'Adagio'	Eulalia	#2 pot	24" o.c.
	600	Pinus mugo 'Pumilio'	Mugo Pine	#3 pot	20" o.c.
	350	Taxus media x hicksii	Hicks Yew	4' ht.	B&B
	1800	Asarum europaeum	European Wild Ginger	#1 pot	10' o.c.
	1500	Helictotrichon sempervirens	Blue Oat Grass	#1 pot	18" o.c.
	1400	Liloupe muscari	Lilyturf	#1 pot	15" o.c.
	750	Rhododendron x yakushimanum Princess	Yaku Princess Rhododendron	#3 pot	2' o.c.
	1100	Taxus baccata 'Repanders'	Spreading English Yew	#3 pot	2' o.c.

# Landscape Sections

