



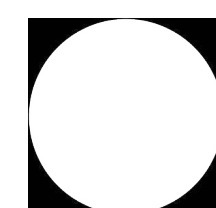
PERSPECTIVE VIEW OF BUILDING ON ROYAL AVE LOOKING SOUTH

6588 ROYAL AVE, WEST VANCOUVER, BC

4 STOREYS RESIDENTIAL



ARCHITECT
Mara + Natha Architecture Ltd.
Contact: Rob Lee, Architect AIBC
rob@maraarch.com



DESIGN CONSULTANT
Daniel Beg Design
Contact: Daniel Beg, Founder
danielhbeg@gmail.com

PROJECT DIRECTORY

SURVEYOR
Bennett Land Surveying Ltd.
Contact: Rachel Gavin
rachel@bennettsurveys.com

Architect: Robert H. Lee, Architect AIBC
Mara + Natha Architecture Ltd.

202 - 2414 St Johns St., Port Moody,
BC V3H 2B1
(+1) 604.420.2233
rob@maraarch.com
www.maraarch.com

These plans are COPYRIGHTED and ALL RIGHTS ARE RESERVED. The reproduction of these plans in any form, in part or as a whole is strictly prohibited. This plan and design are, and at all times remain the exclusive property of MARA + NATHA ARCHITECTURE LTD. and may not be reproduced without written consent.

It is the responsibility of the Owner and General Contractor to verify all dimensions and site conditions prior to commencement of work and they shall notify the architect of any errors, omissions or discrepancies. Any work completed without architect's knowledge will be the full responsibility of the Owner and General Contractor.

2 Updated Design	24-07-25
1 Issued for Preliminary Design	23-09-12
Revisions	yy-mm-dd

Sign & Seal

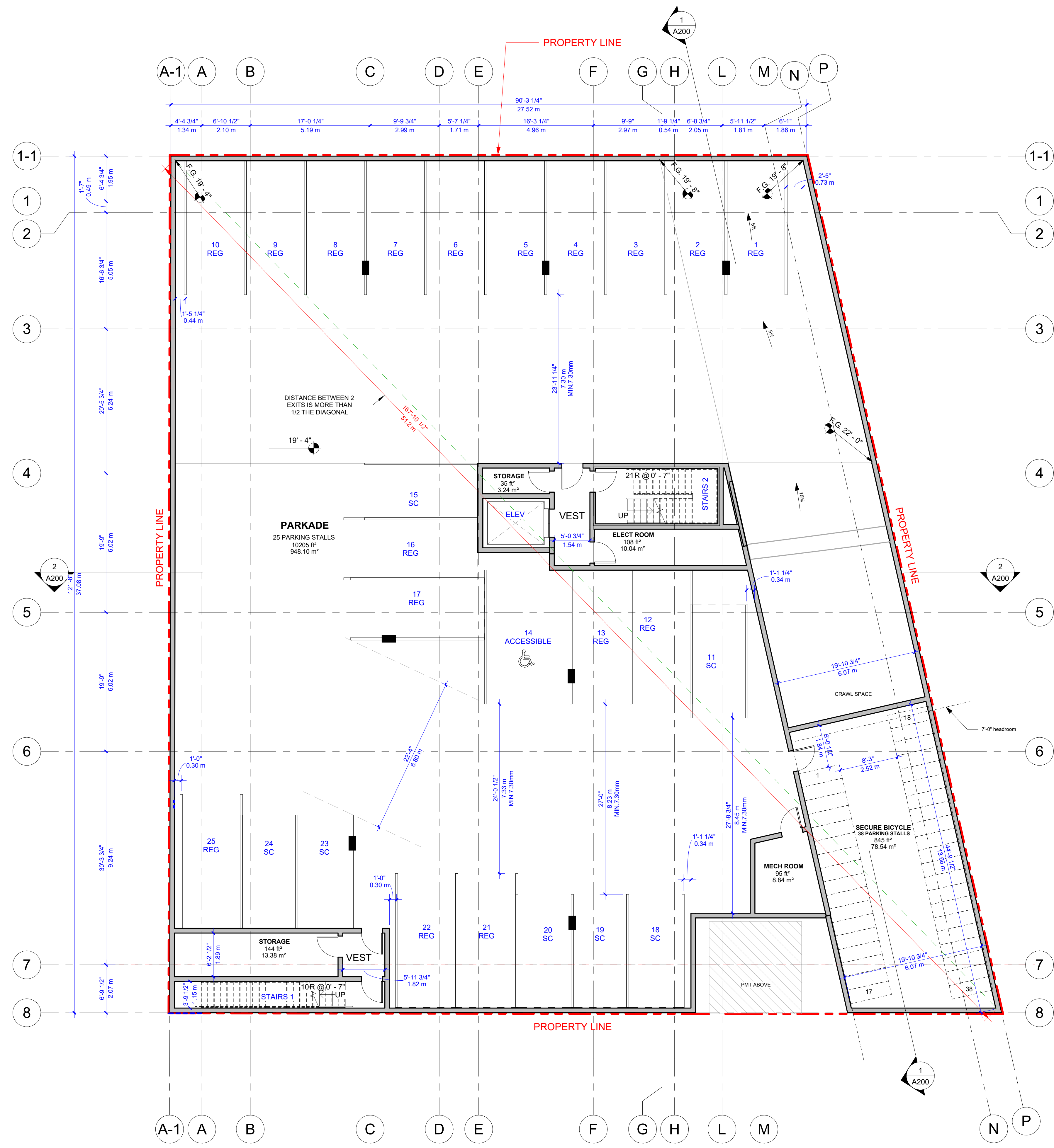
Project Title
HORSESHOE BAY APARTMENT

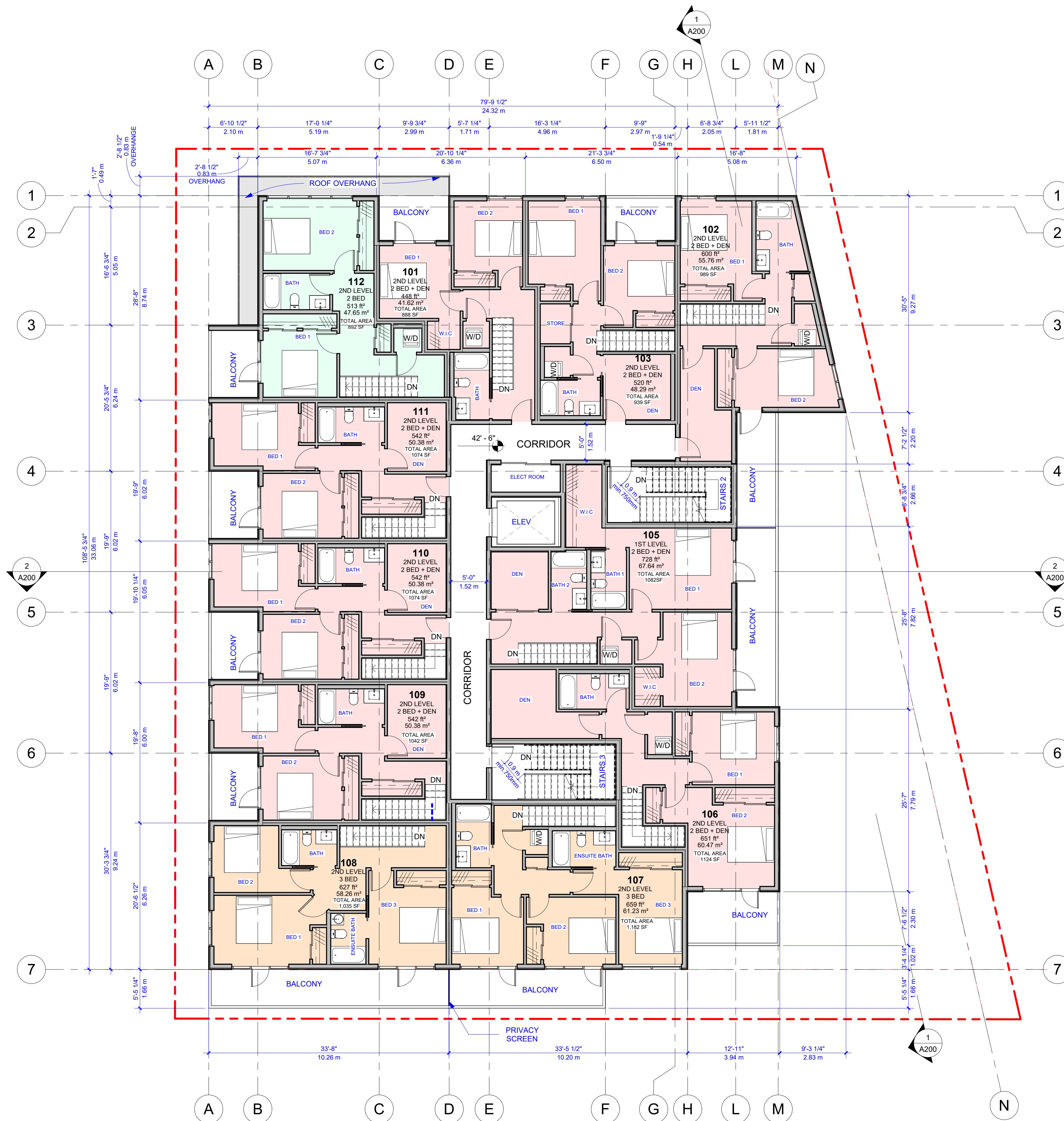
6588 Royal Ave, West Vancouver, BC
V7W 2B6

Project No. 220704

Project Start Date DEC 2021

Sheet Title Scale
COVER SHEET





Room Legend

- 2 BED
- 2 BED + DEN
- 3 BED

2 Updated Design	24-07-25
1 Issued for Preliminary Design	23-09-12
Revisions	yy-mm-dd

Sign & Seal

Project Title
HORSESHOE BAY APARTMENT

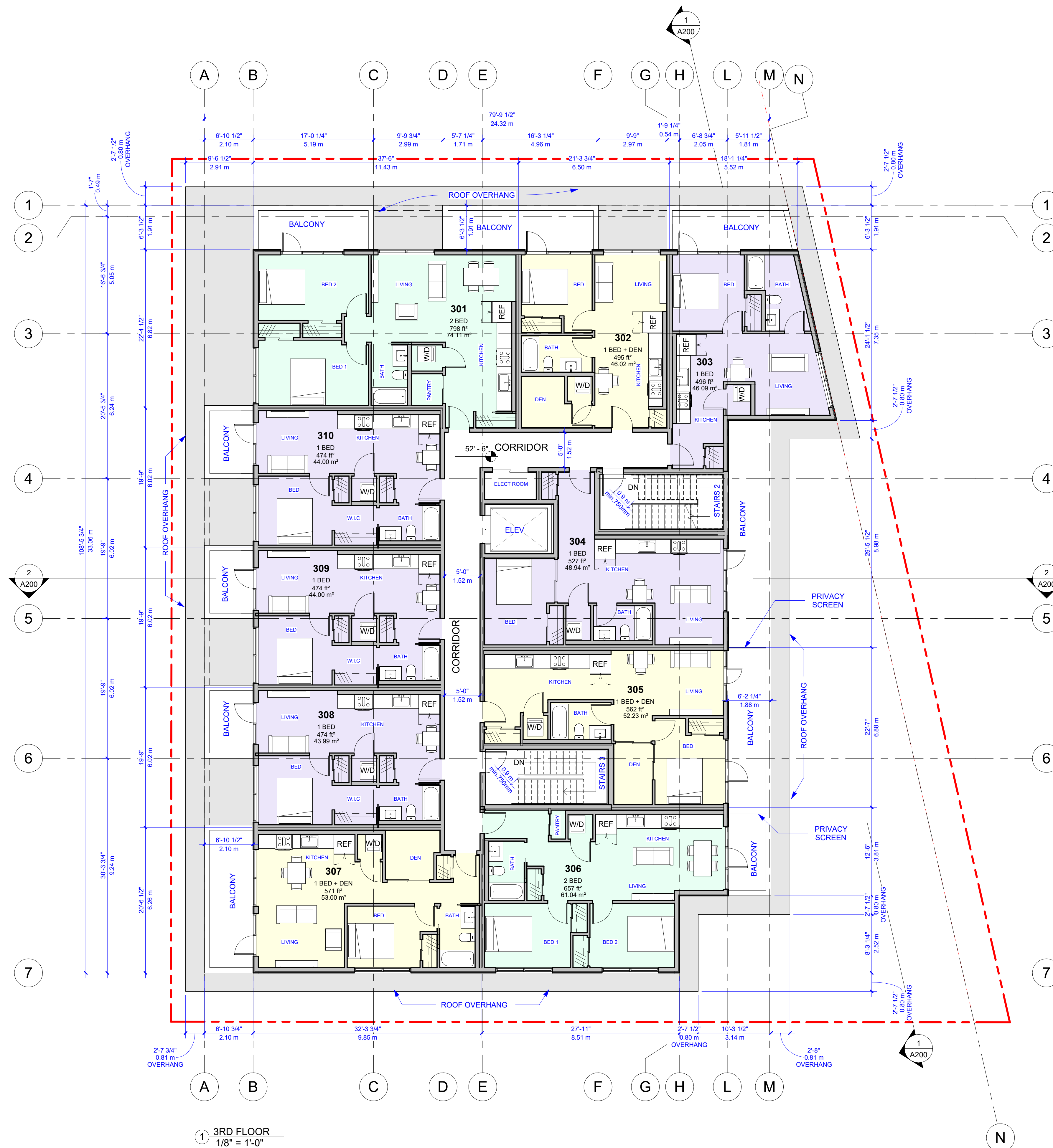
6588 Royal Ave, West Vancouver, BC
V7W 2B6

Project No. 220704

Project Start Date DEC 2021

Sheet Title Scale 1/8" = 1'-0"
2ND FLOOR

1 2ND FLOOR
1/8" = 1'-0"



Room Legend

- 1 BED
- 1 BED + DEN
- 2 BED

① 3RD FLOOR
1/8" = 1'-0"

GENERAL NOTES:
ROOF OVERHANG TO BE PROPOSED 3'-0" HEIGHT ABOVE FLOOR

2 Updated Design	24-07-25
1 Issued for Preliminary Design	23-09-12
Revisions	yy-mm-dd

Sign & Seal

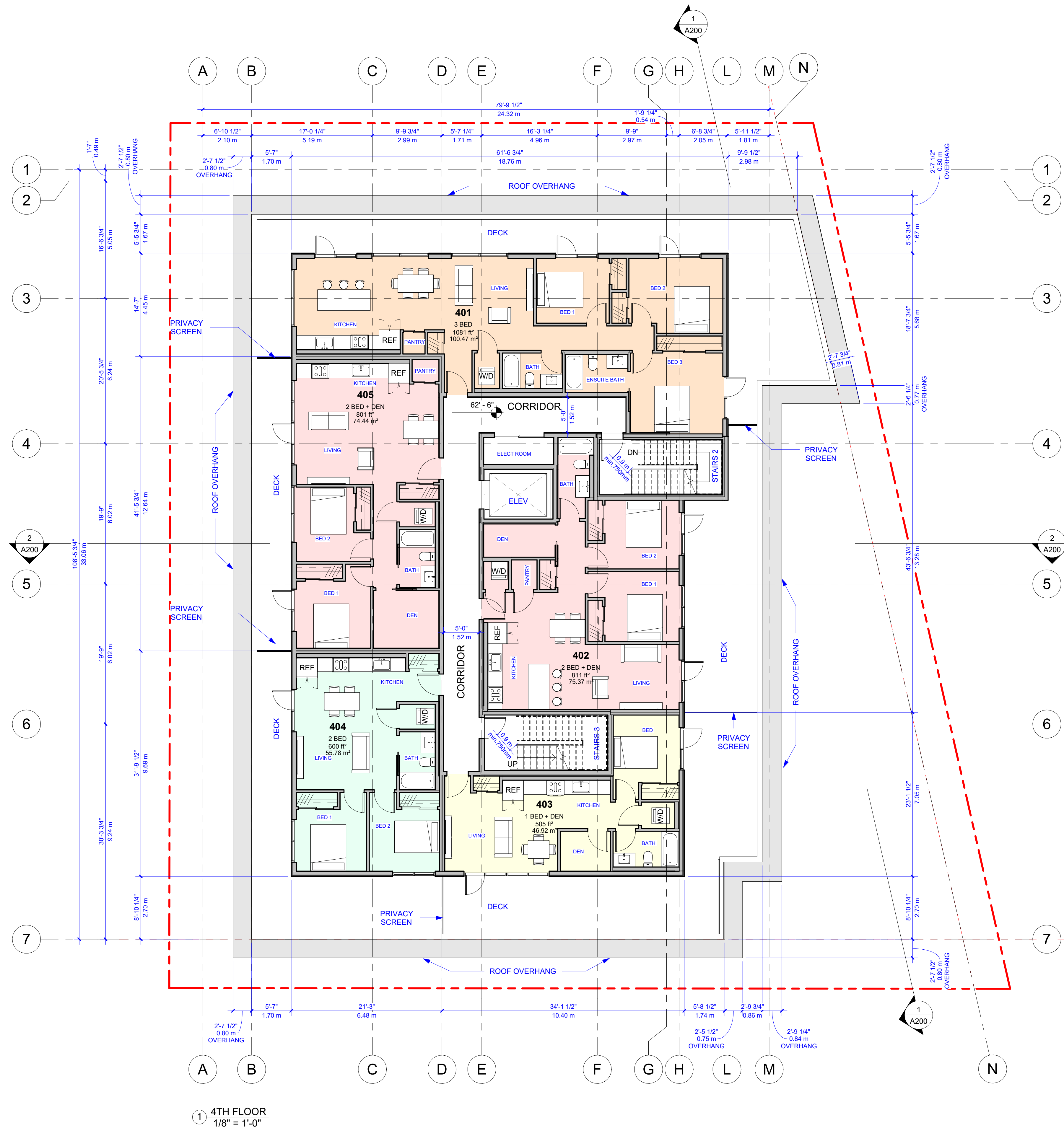
Project Title
HORSESHOE BAY APARTMENT

6588 Royal Ave, West Vancouver, BC
V7W 2B6

Project No. 220704

Project Start Date DEC 2021

Sheet Title Scale 1/8" = 1'-0"
3RD FLOOR



Room Legend	
	1 BED+ DEN
	2 BED
	2 BED + DEN
	3 BED

1 4TH FLOOR
1/8" = 1'-0"

2 Updated Design	24-07-25
1 Issued for Preliminary Design	23-09-12
Revisions	yy-mm-dd

Sign & Seal

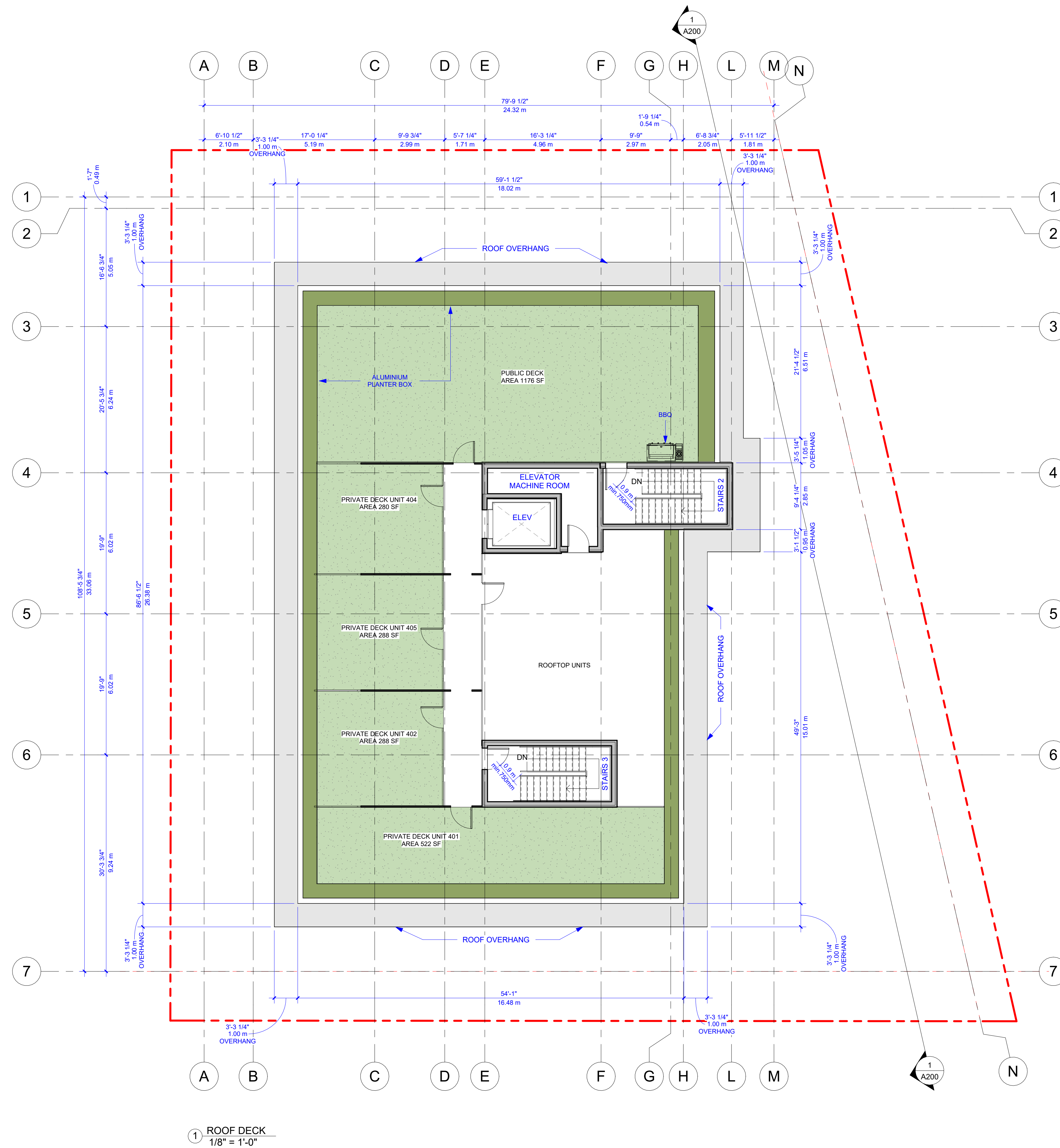
Project Title
HORSESHOE BAY APARTMENT

6588 Royal Ave, West Vancouver, BC
V7W 2B6

Project No. 220704

Project Start Date DEC 2021

Sheet Title Scale 1/8" = 1'-0"
4TH FLOOR



2 Updated Design	24-07-25
1 Issued for Preliminary Design	23-09-12
Revisions	yy-mm-dd

Sign & Seal

Project Title
HORSESHOE BAY APARTMENT

6588 Royal Ave, West Vancouver, BC
V7W 2B6

Project No. 220704

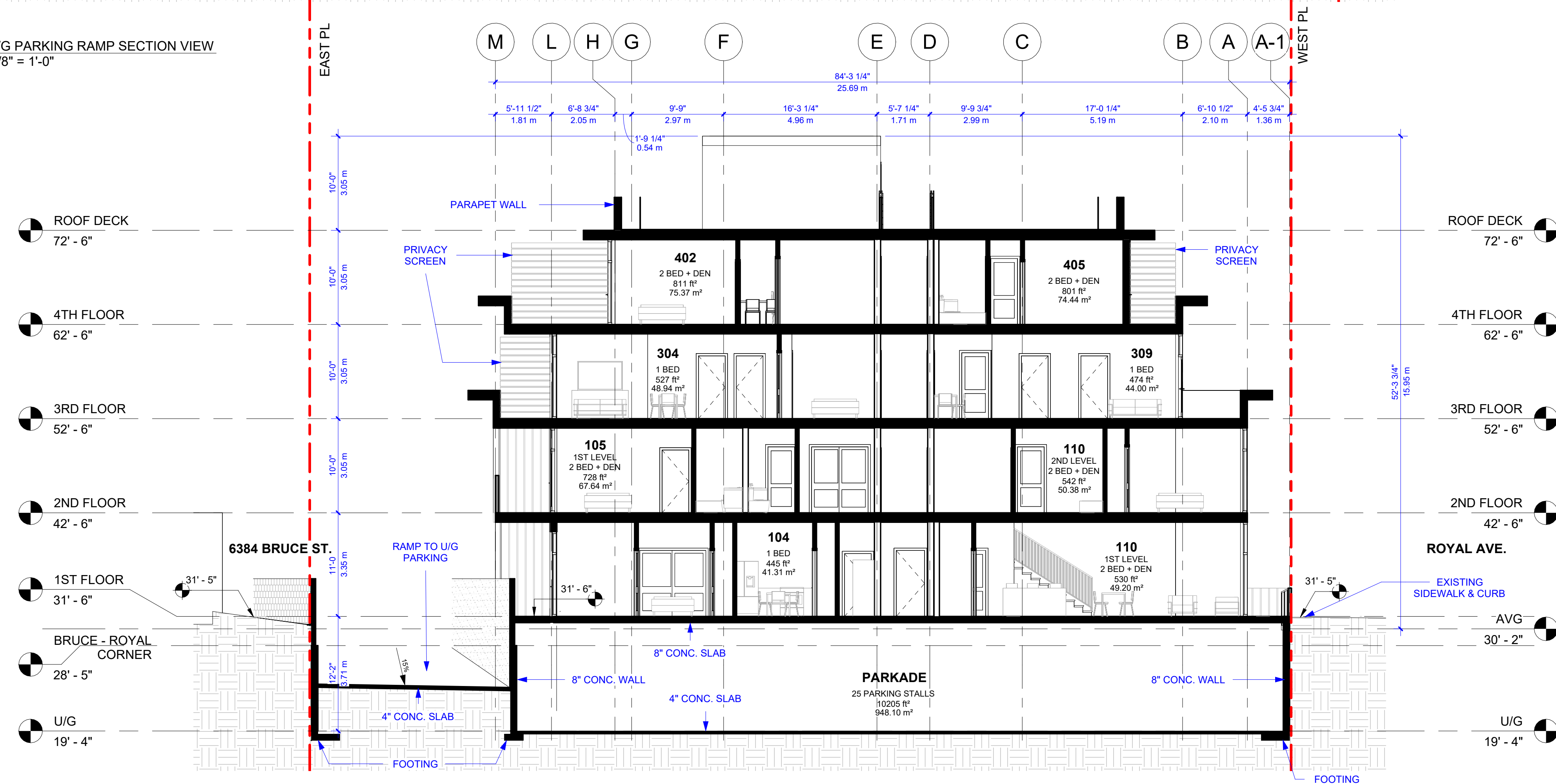
Project Start Date DEC 2021

Sheet Title Scale 1/8" = 1'-0"
ROOF DECK





① U/G PARKING RAMP SECTION VIEW
1/8" = 1'-0"



② BUILDING SECTION @ U/G PARKING
CROSSFALL
1/8" = 1'-0"

2 Updated Design	24-07-25
1 Issued for Preliminary Design	23-09-12
Revisions	yy-mm-dd

Sign & Seal

Project Title
HORSESHOE BAY APARTMENT

6588 Royal Ave, West Vancouver, BC
V7W 2B6

Project No. 220704

Project Start Date DEC 2021

Sheet Title Scale 1/8" = 1'-0"
SECTIONS

