





DRAWING LIST

SHEET	DRAWING TITLE
L00	COVER SHEET
L101	L1 LANDSCAPE PLAN
L102	L1 PLANTING PLAN
L103	L2 LANDSCAPE AND PLANTING PLAN
L201	LANDSCAPE SECTIONS
L301	DETAILS

LANDSCAPE NOTES



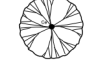

- All work shall meet or exceed the requirements as outlined in the current Edition of the Canadian Landscape Standard.
- Refer to Architectural package for overall plan, survey information and dimensioned site plan.
- For hard landscape details attached to the building - REFER TO ARCHITECTURAL.
- For parking layout and number of spaces - REFER TO ARCHITECTURAL.
- For hard landscape grading information - REFER TO ARCHITECTURAL.
- For drainage information - REFER TO MECHANICAL.
- ALL STREET TREES Install 8" x 18" Deep Root Barrier centred on each tree between tree pit and sidewalk (side of tree adjacent to sidewalk). Refer to Specification.
- ALL STREET TREES to be installed to City Standards.
- Although not always shown, all planting areas adjacent to the building face to be separated by a min. 8" wide gravel strip, separated by a pressure treated wood assembly as shown in the details.
- Soil depths to meet or exceed the Canadian Landscape Standard, as described in Landscape Specifications.
- All ground level patios to be provided with a hose bib at each unit.

GRAPHIC LEGEND

-  PROPERTY LINE
-  WOOD FENCE
-  GLASS OR METAL GUARD
-  BUILDING OVERHANG

PLANT LIST

TREES

SYMBOL	QTY	BOTANICAL NAME	COMMON NAME	SIZE / SPACING
	3	<i>Acer palmatum 'Butterfly'</i>	Butterfly Japanese Maple	#2 pot / 24" O.C.
	1	<i>Acer palmatum 'Sangokaku'</i>	Coral Bark Japanese Maple	2.5m B&B, Multistem
	1	<i>Cedrus deodara 'Aurea'</i>	Golden Deodar Cedar	3.5m Ht.
	1	<i>Picea sitchensis</i>	Sitka Spruce	3.5m Ht. specimen

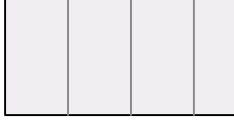
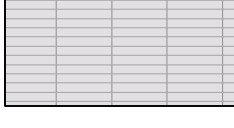
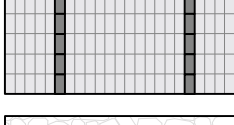




SHRUBS

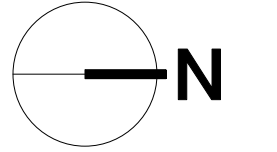
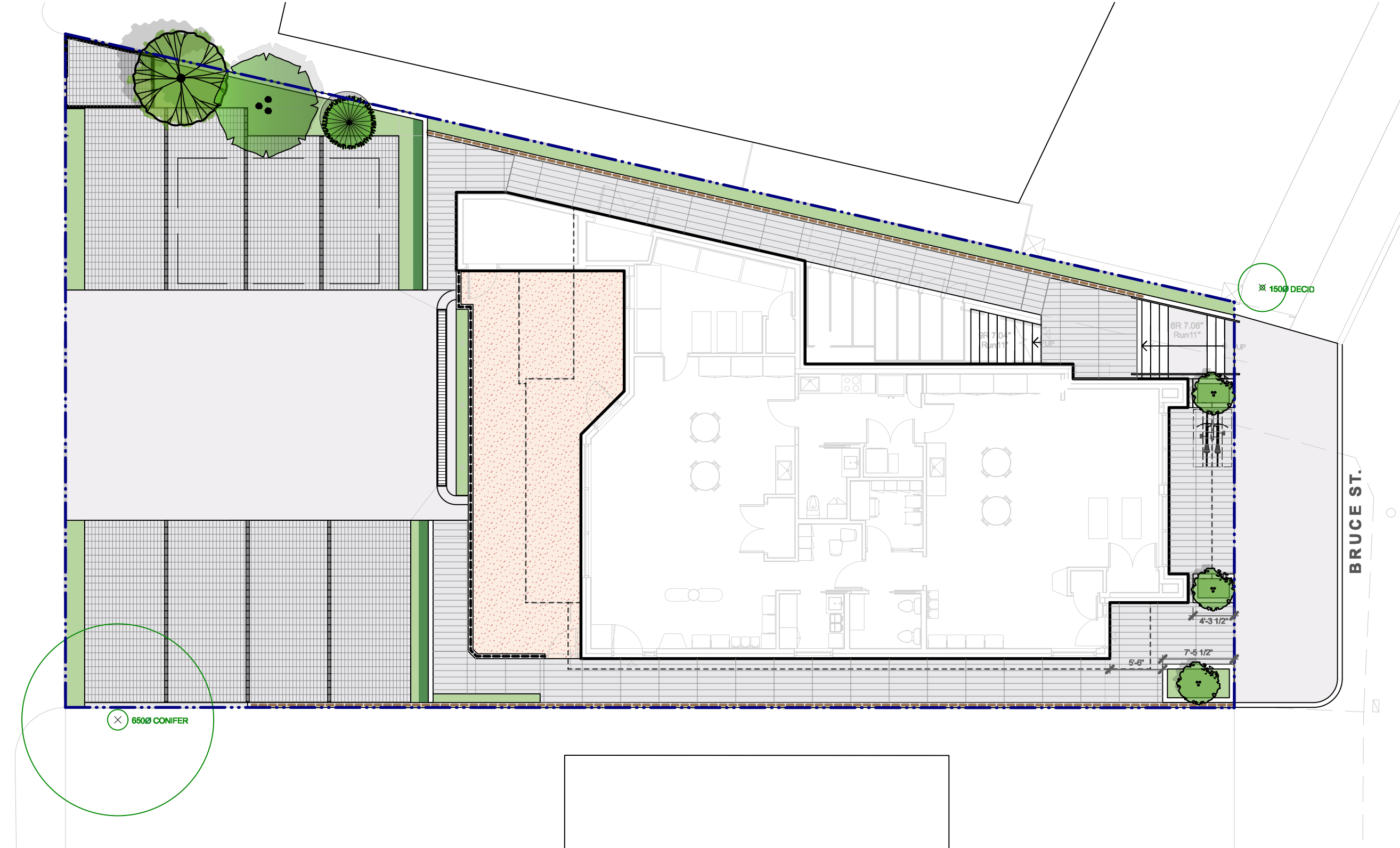
SYMBOL	QTY	BOTANICAL NAME	COMMON NAME	SIZE / SPACING
Cd	1	<i>Cotoneaster dammeri</i>	Bearberry Cotoneaster Dammeri	#1 pot / 18" O.C.
Ew	28	<i>Erica carnea 'Springwood White'</i>	Springwood White Heather	#1 pot / 16" O.C.
Ef	2	<i>Euonymus fortunei 'Emerald Gaiety'</i>	Emerald Gaiety Wintercreeper	#1 pot / 18" O.C.
Ho	7	<i>Hosta 'Captain Kirk'</i>	Captain Kirk Plantain Lily	#2 Pot, 18" O.C.
Lr	31	<i>Lavandula angustifolia 'Hidcote'</i>	Hidcote Lavender	#1 pot / 18" O.C.
Pl	58	<i>Prunus laurocerasus 'Otto Luyken'</i>	Otto Luyken English Laurel	#2 pot / 36" O.C.
Sg	8	<i>Senecio greyi</i>	Daisy bush	#2 pot / 30" O.C.
T	37	<i>Taxus x media 'Hillii' (Male Plants Only)</i>	Hill's Yew	4' ht, B&B, 18" O.C.

GROUNDCOVERS, GRASSES, FERNS & VINES

SYMBOL	QTY	BOTANICAL NAME	COMMON NAME	SIZE / SPACING
Au	32	<i>Arctostaphylos uva-ursi</i>	Bearberry	#1 pot / 12" O.C.
Hm	11	<i>Hakonechloa macra</i>	Japanese Forest Grass	#1 pot / 15" O.C.
St	3	<i>Stipa tenuissima</i>	Mexican Feather Grass	#2 pot / 24" O.C.

MATERIALS LEGEND

	CIP CONCRETE STAIRS, PARKING, SIDE PATHWAY
	UNIT PAVERS MAIN ENTRANCES AND PATHWAYS
	PERMEABLE UNIT PAVERS PARKING
	GRAVEL DRIP STRIP AND GARBAGE AREA
	LAYERED SHRUB PLANTING GROUND LEVEL AND L2
	HEDGE PLANTING GROUND LEVEL
	POUR IN PLACE RUBBER PLAY AREA



1 2024-05-06 ISSUED FOR REVIEW

no.: | date: | item: | by:

Revisions:

Stamp:



DURANTE KREUK LTD. LANDSCAPE ARCHITECTS
102 - 1637 West 5th Avenue Vancouver B.C. V6J 1N5
P 604.684.4611 | F 604.684.0577 | www.dk.bc.ca

Client:

Project:

**6384 Bruce St. -
Daycare, Horseshoe
Bay**

**6384 Bruce St., West
Vancouver, British Columbia**

Drawn by: SM

Checked by: SV

Date: 2023-12-15

Scale: 3/32" = 1'0"

Drawing Title:

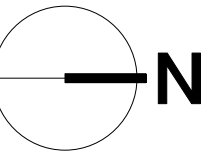
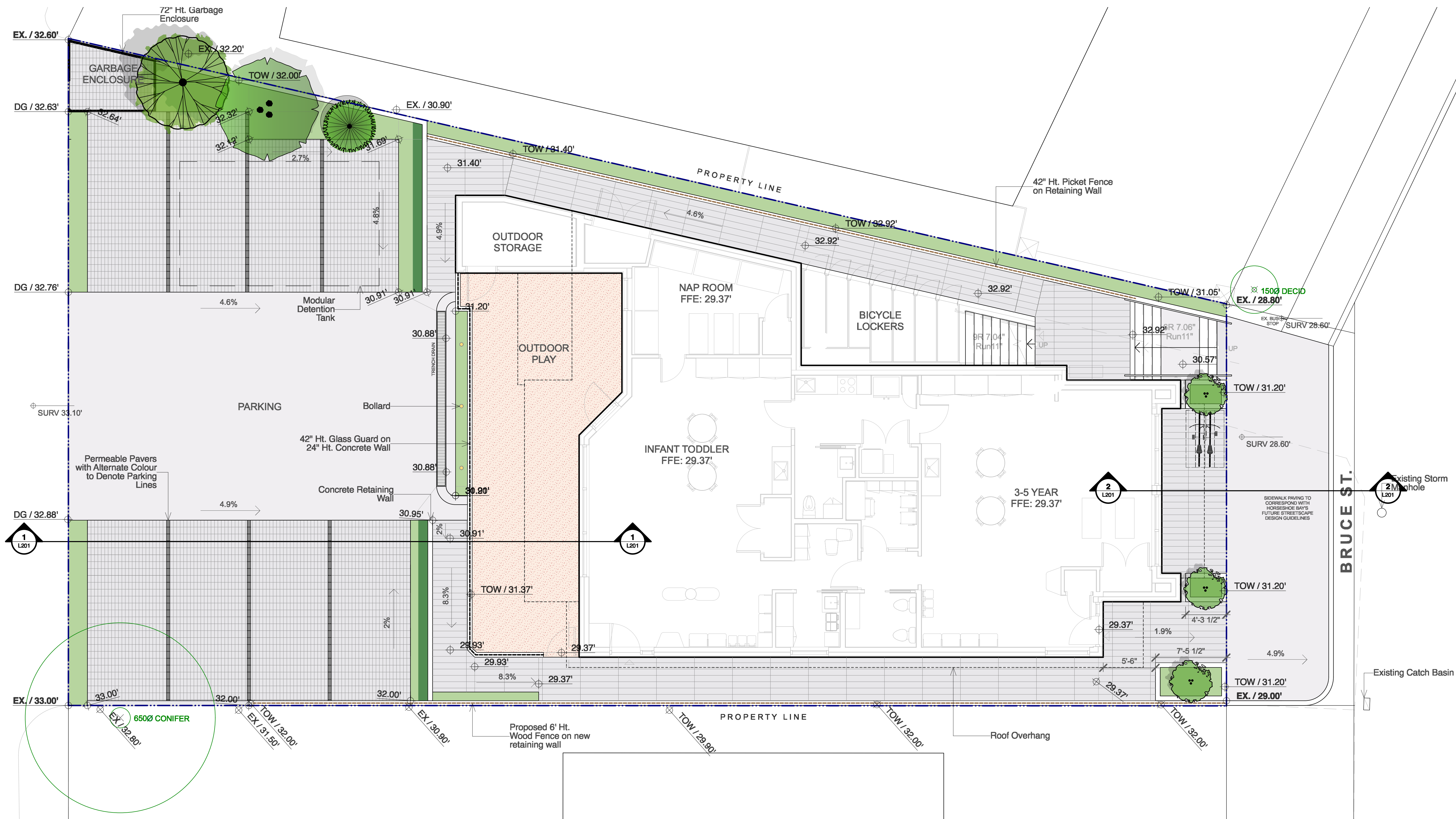
COVER SHEET

Project No.:
23085

Sheet No.:

L00

LANE



1 2024-05-06 ISSUED FOR REVIEW
 no.: | date: | item: | by:
 Revisions:
 Stamp:

dk
 DURANTE KREUK LTD. LANDSCAPE ARCHITECTS
 102 - 1637 West 5th Avenue Vancouver B.C. V6J 1N5
 P 604.684.4611 | F 604.684.0577 | www.dk.bc.ca
 Client:

Project:
**6384 Bruce St. -
 Daycare, Horseshoe
 Bay**
**6384 Bruce St., West
 Vancouver, British Columbia**

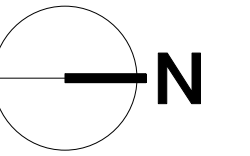
Drawn by: SM
 Checked by: SV
 Date: 2023-12-15
 Scale: 3/16" = 1'0"
 Drawing Title:

**L1 LANDSCAPE
 PLAN**

Project No.:
23085
 Sheet No.:

L101





1 2024-05-06 ISSUED FOR REVIEW

no.: | date: | item: | by:

Revisions:

Stamp:



DURANTE KREUK LTD. LANDSCAPE ARCHITECTS
102 - 1637 West 5th Avenue Vancouver B.C. V6J 1N5
P 604.684.4611 | F 604.684.0577 | www.dkl.bc.ca

Client:

Project:

**6384 Bruce St. -
Daycare, Horseshoe
Bay**

**6384 Bruce St., West
Vancouver, British Columbia**

Drawn by: SM

Checked by: SV

Date: 2023-12-15

Scale: 3/16" = 1'0"

Drawing Title:

L1 PLANTING PLAN

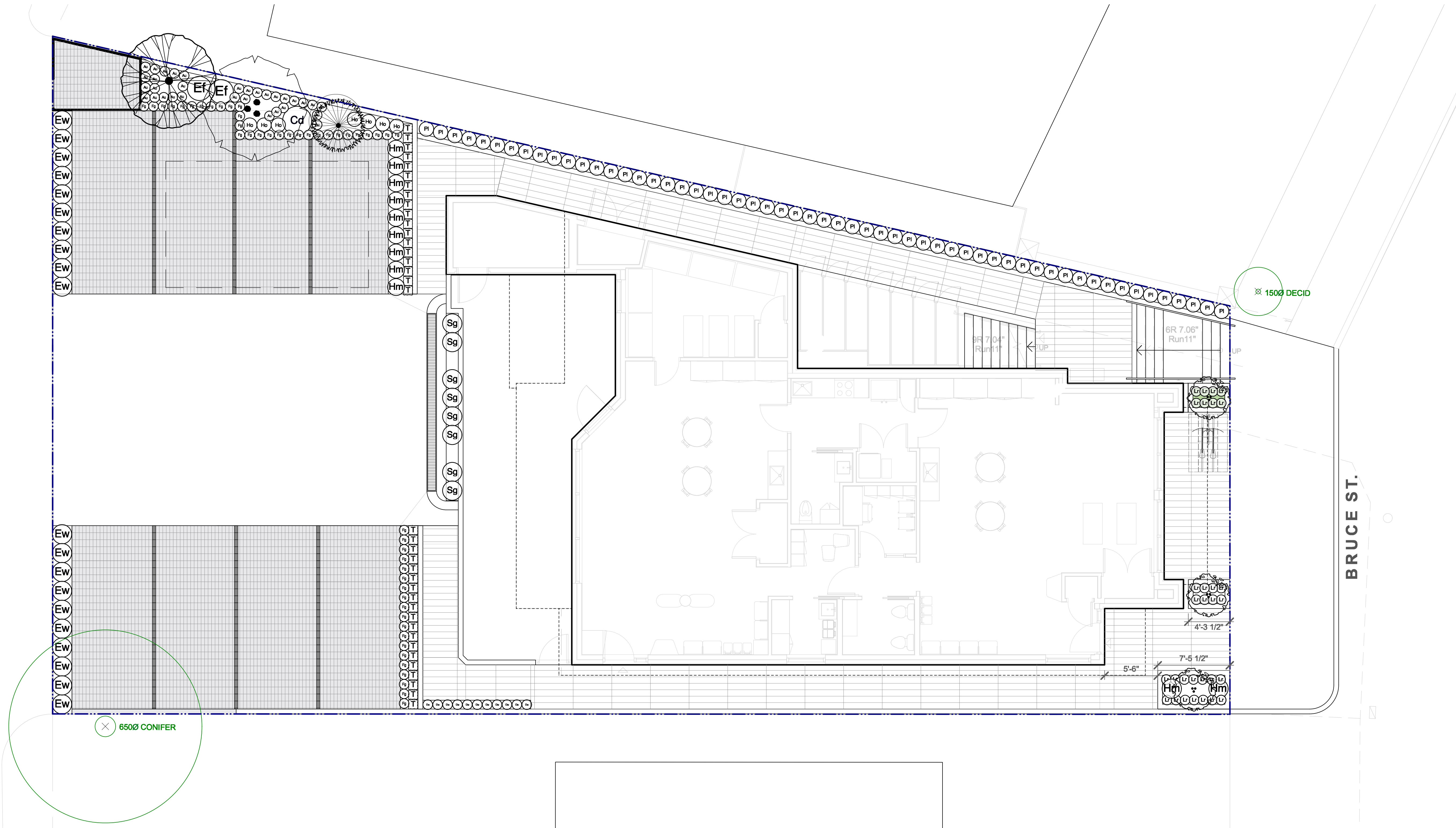
Project No.:
23085

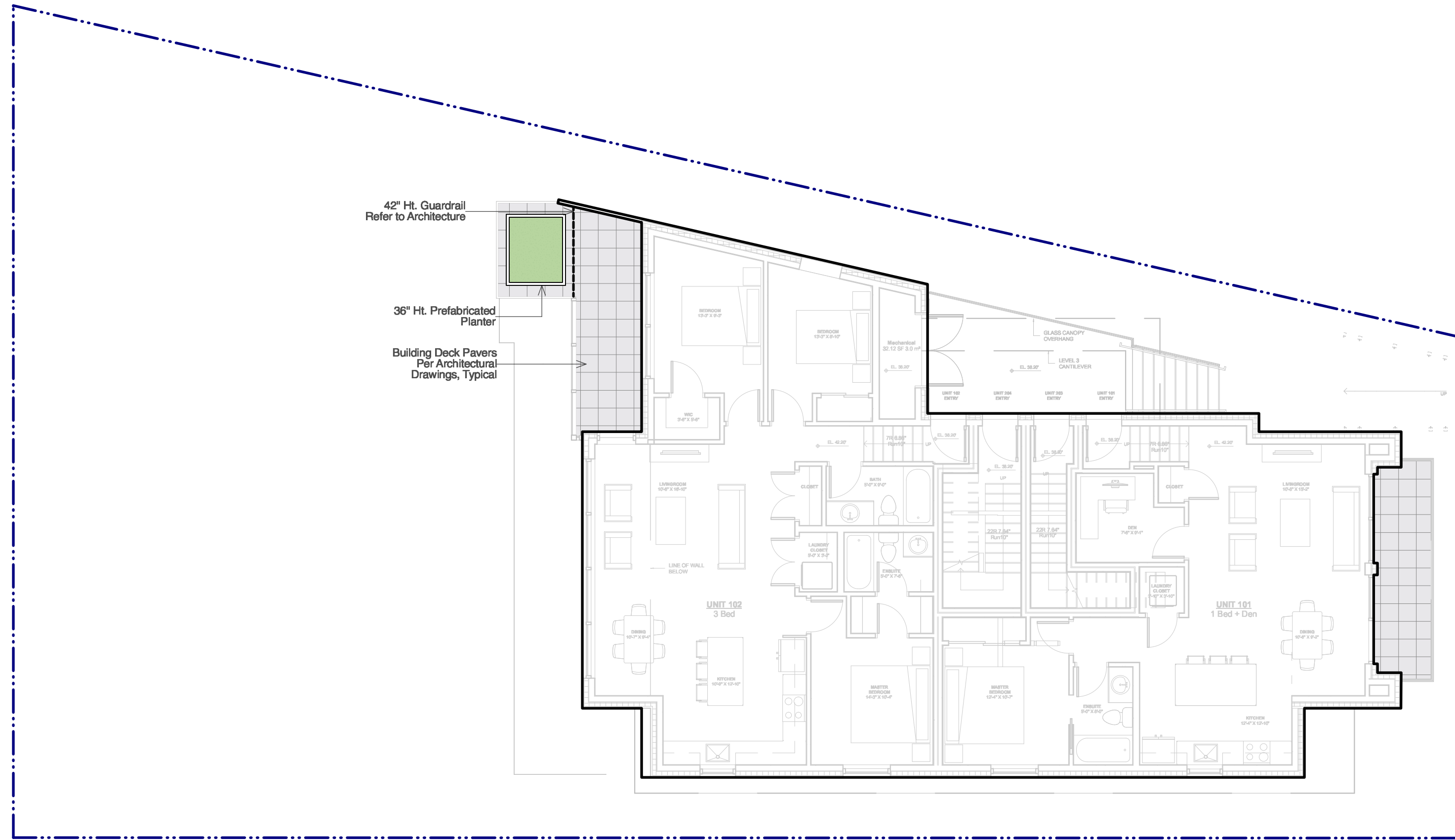
Sheet No.:

L102

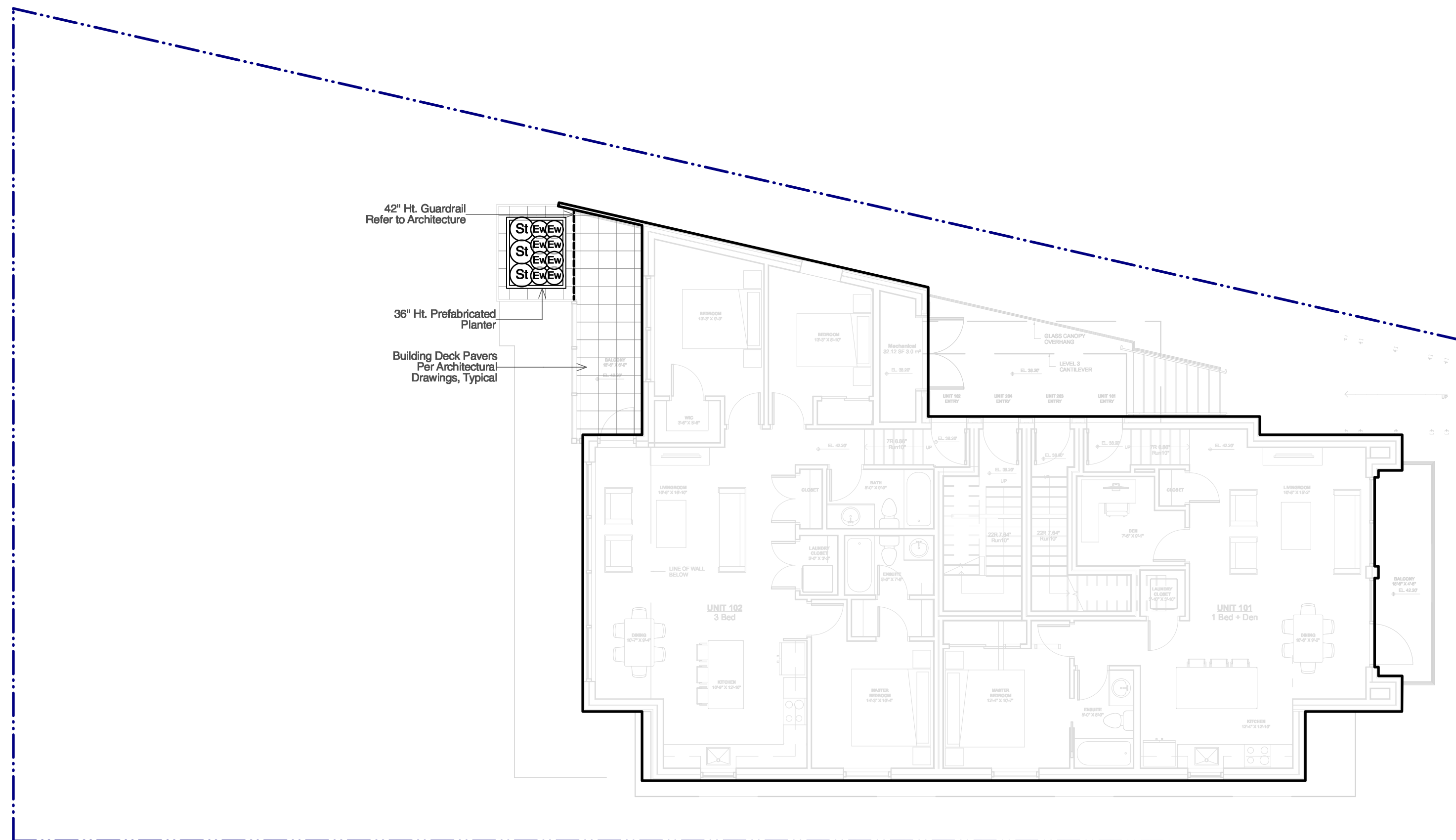
LANE

BRUCE ST.

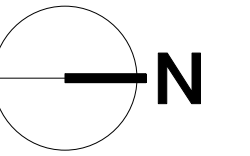




1 LEVEL 2 LANDSCAPE PLAN
L103 Scale = 1/8" = 1'-0"



2 LEVEL 2 PLANTING PLAN
L103 Scale = 1/8" = 1'-0"



1 2024-05-06 ISSUED FOR REVIEW

no.: | date: | item: | by:

Revisions:

Stamp:



DURANTE KREUK LTD. LANDSCAPE ARCHITECTS
102 - 1637 West 5th Avenue Vancouver B.C. V6J 1N5
P 604.684.4611 | F 604.684.0577 | www.dkl.bc.ca

Client:

Project:

**6384 Bruce St. -
Daycare, Horseshoe
Bay**

**6384 Bruce St., West
Vancouver, British Columbia**

Drawn by: SM

Checked by: SV

Date: 2023-12-15

Scale: 3/16" = 1'0"

Drawing Title:

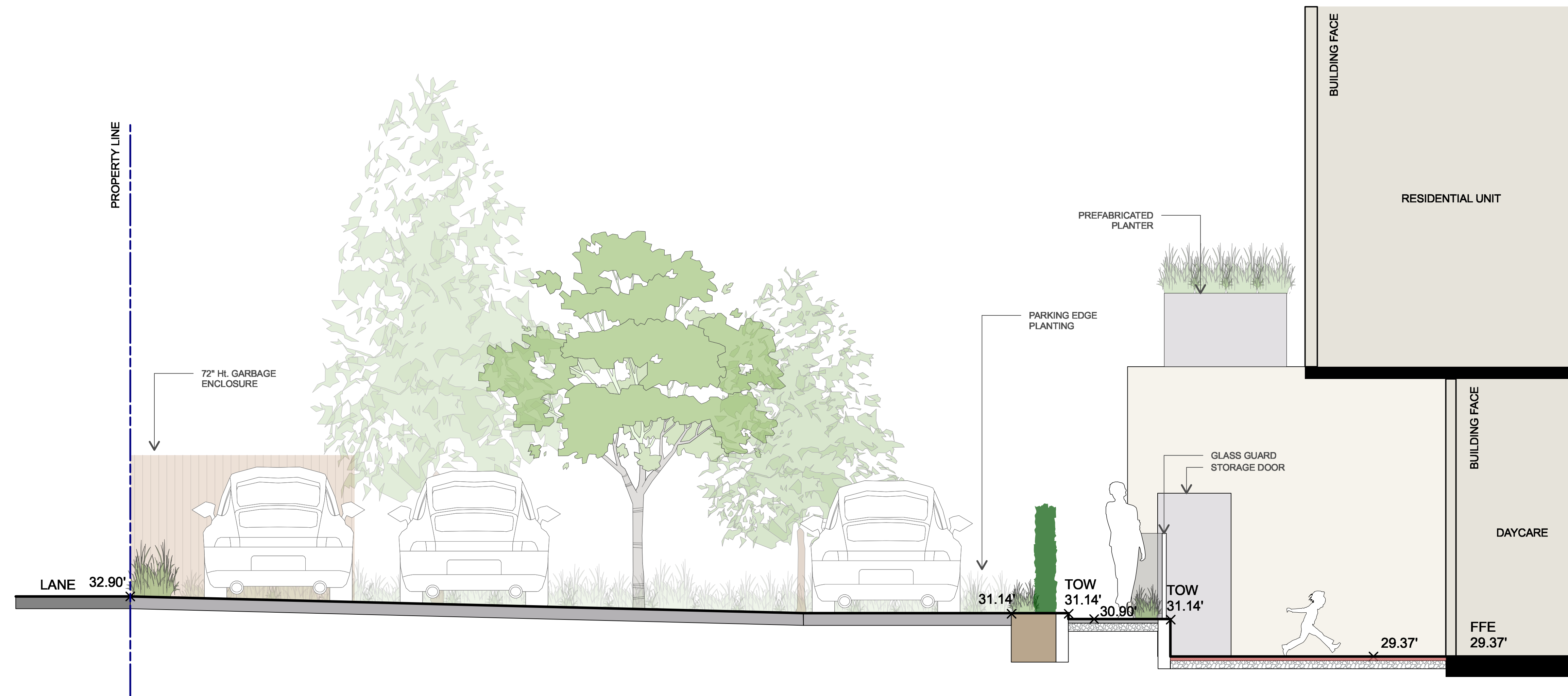
**L2 LANDSCAPE AND
PLANTING PLAN**

Project No.:

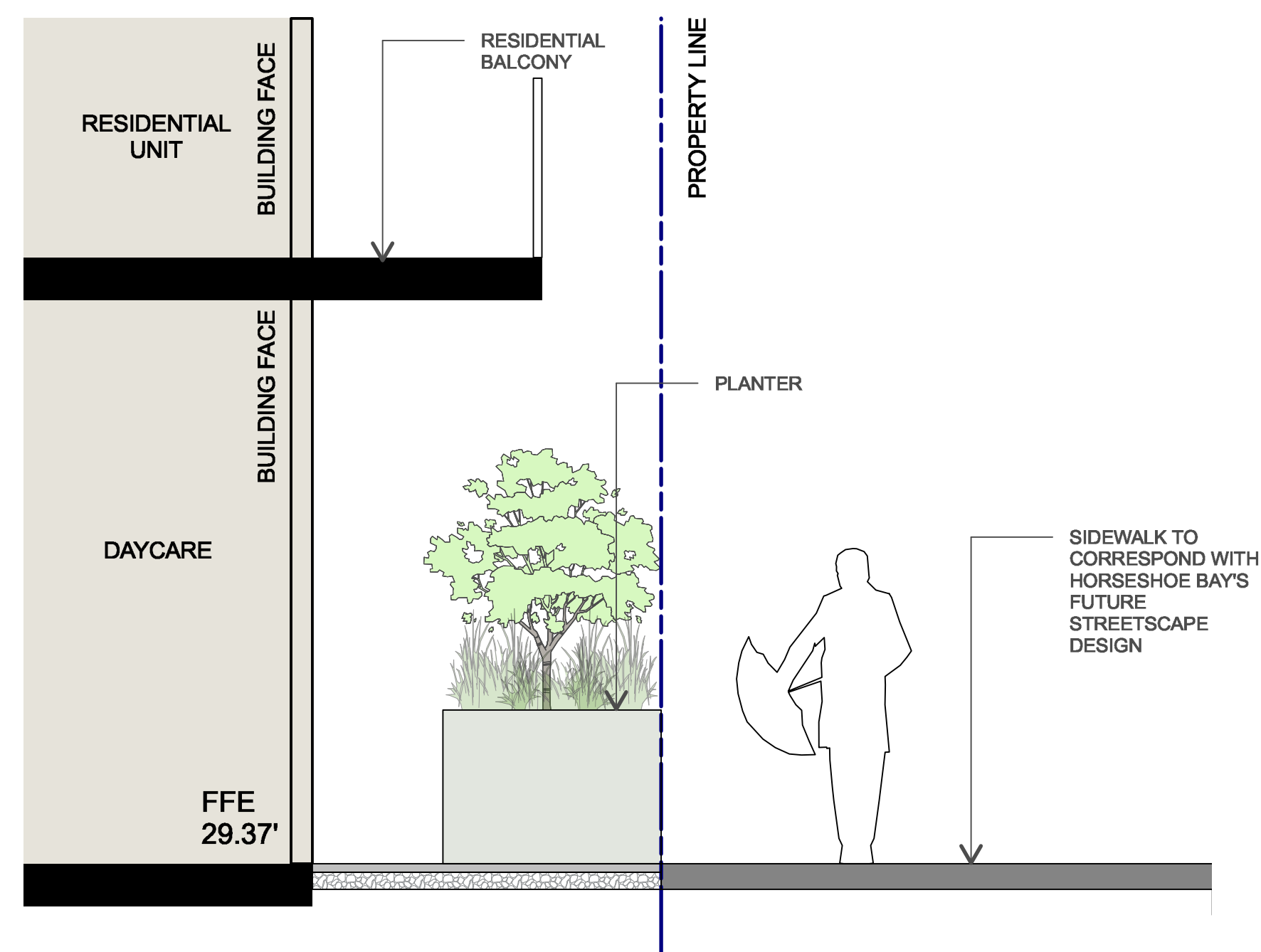
23085

Sheet No.:

L103



1 OUTDOOR PLAY AND PARKING SECTION
 L201 Scale = 3/8" = 1'-0"



2 BRUCE ST. SECTION
 L201 Scale = 3/8" = 1'-0"

1 2024-05-06 ISSUED FOR REVIEW
 no.: | date: | item: | by:
 Revisions:
 Stamp:

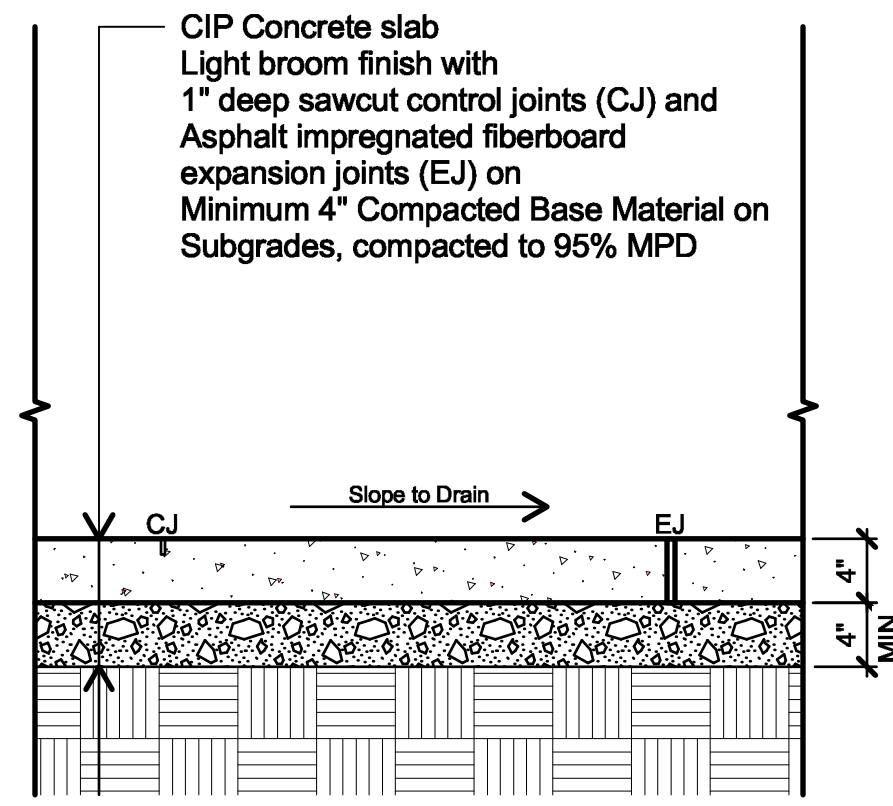
dk
 DURANTE KREUK LTD. LANDSCAPE ARCHITECTS
 102 - 1637 West 5th Avenue Vancouver B.C. V6J 1N5
 P 604.684.4611 | F 604.684.0577 | www.dkl.bc.ca
 Client:

Project:
**6384 Bruce St. -
 Daycare, Horseshoe
 Bay**
**6384 Bruce St., West
 Vancouver, British Columbia**

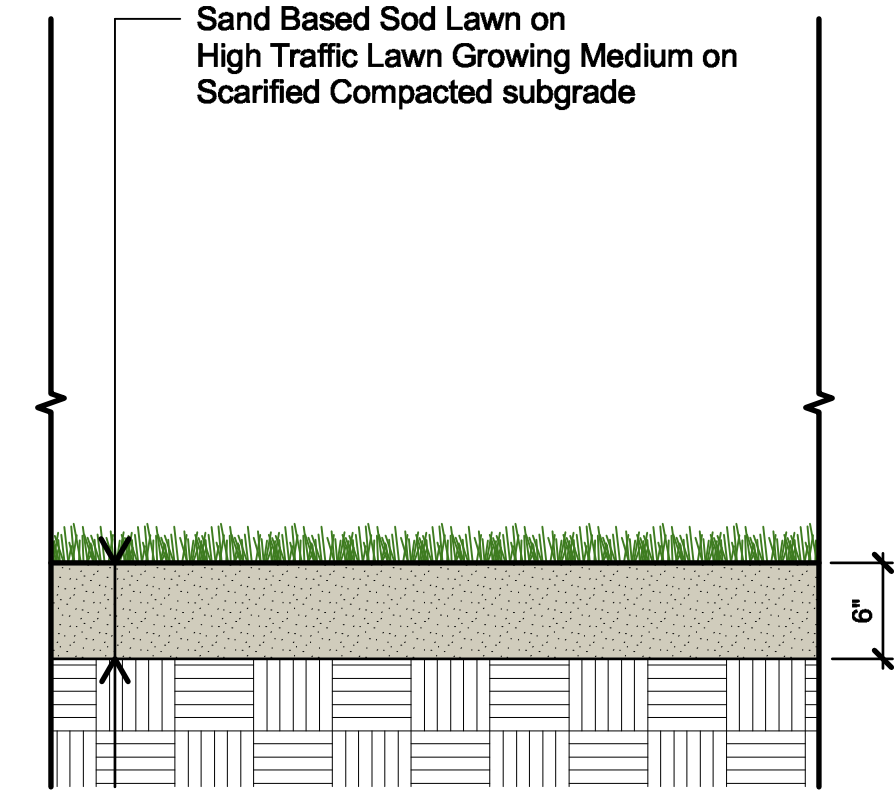
Drawn by: SM
 Checked by: SV
 Date: 2023-12-15
 Scale: AS NOTED
 Drawing Title:

**LANDSCAPE
 SECTIONS**

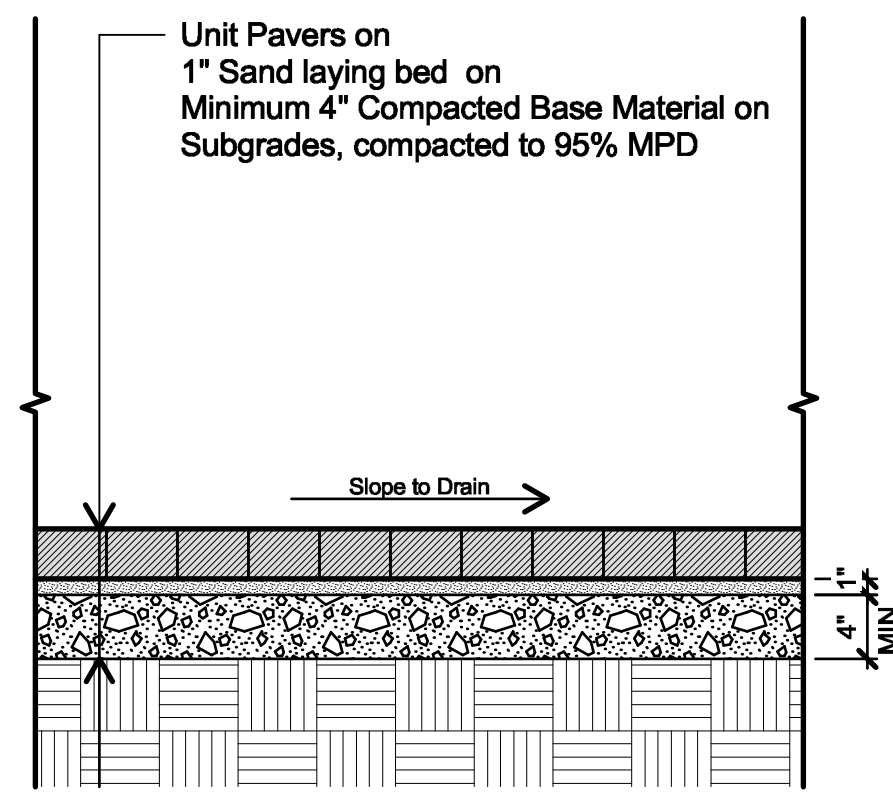
Project No.:
23085
 Sheet No.:



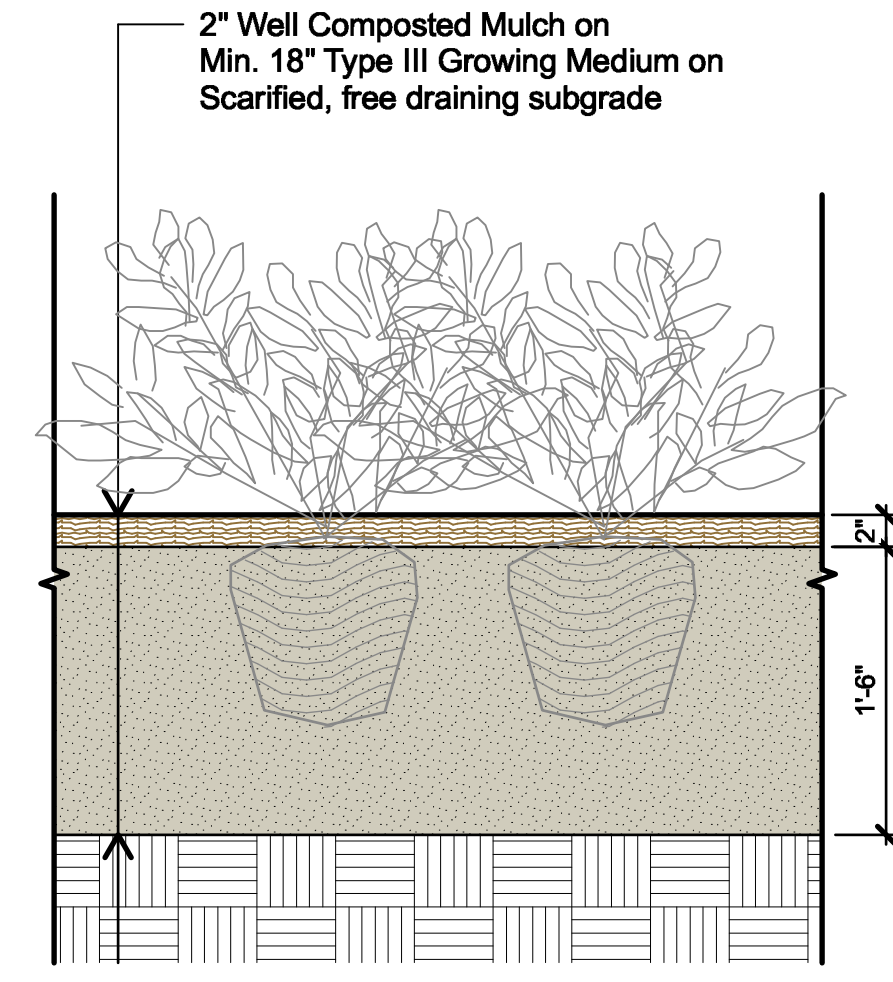
1 CIP CONCRETE - ON GRADE
L301 Scale = 1" = 1'-0"



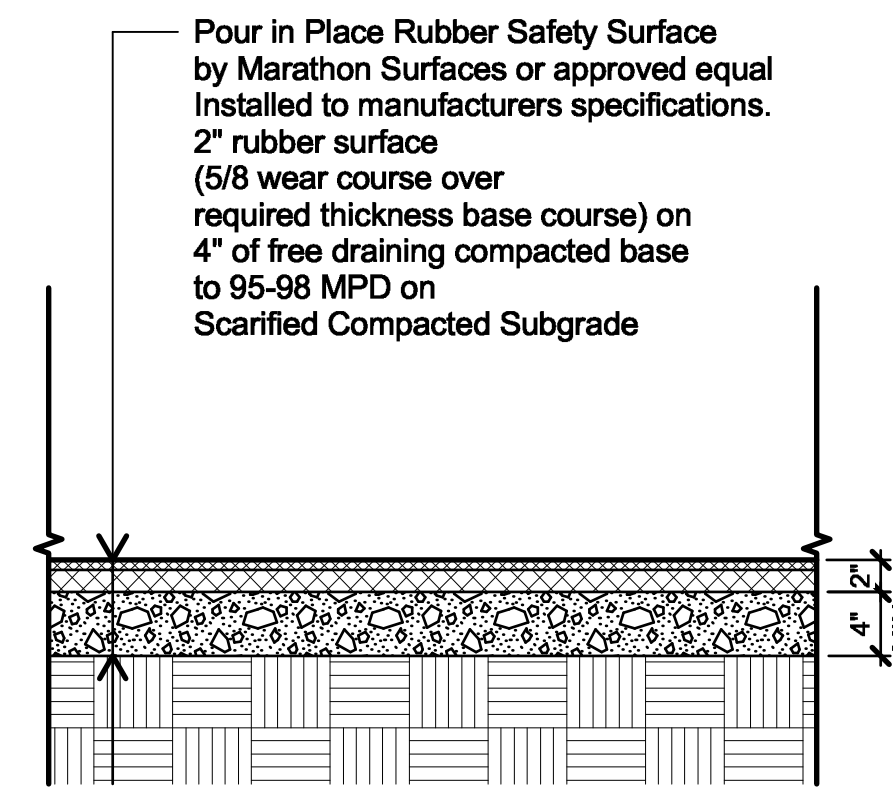
2 SOD LAWN - ON GRADE
L301 Scale = 1" = 1'-0"



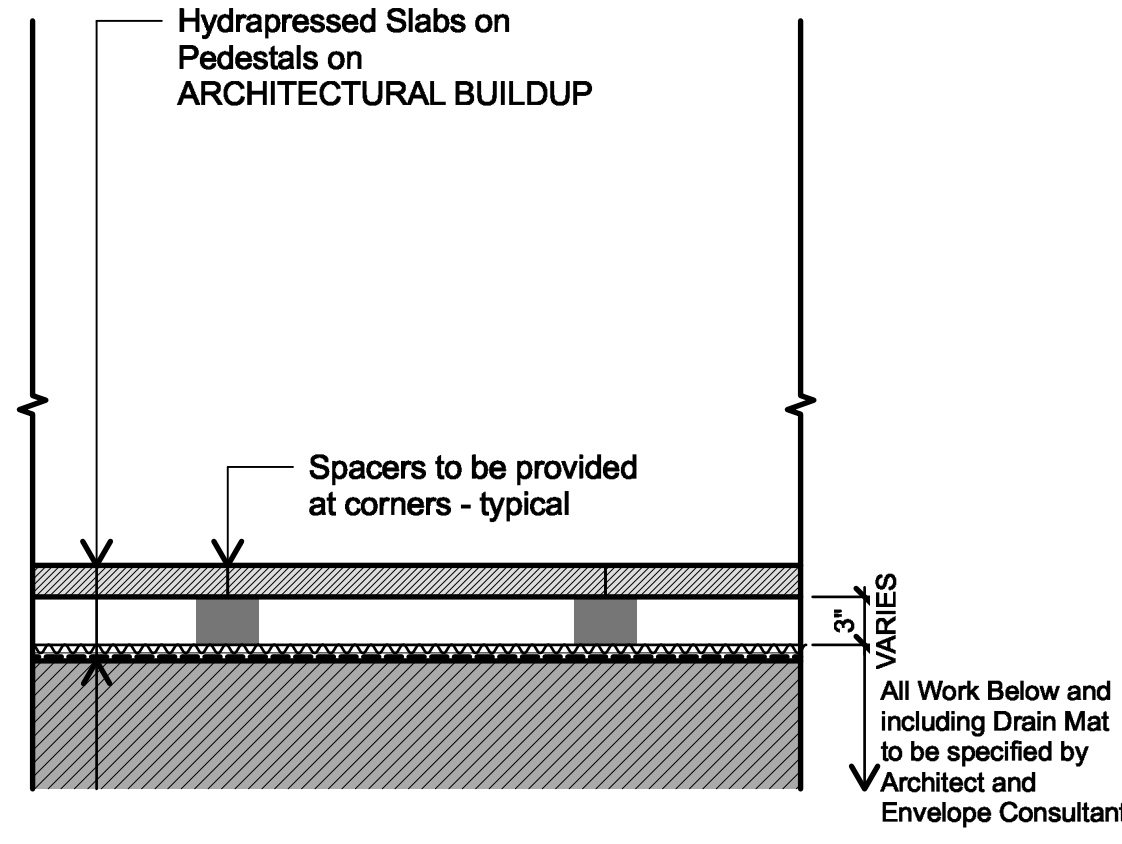
3 UNIT PAVERS - ON GRADE
L301 Scale = 1" = 1'-0"



4 PLANTING - ON GRADE
L301 Scale = 1" = 1'-0"



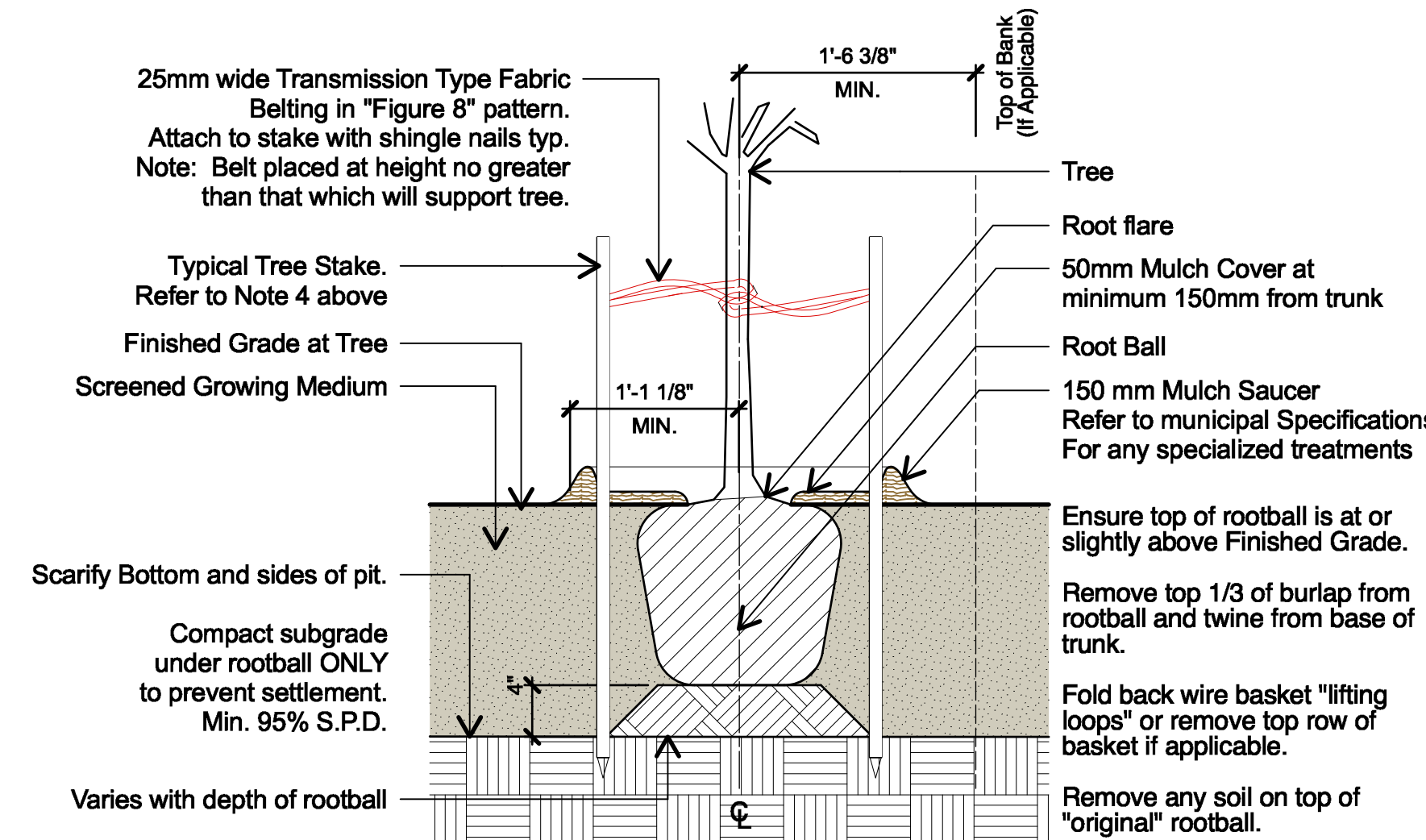
5 POUR IN PLACE RUBBER - ON GRADE
L301 Scale = 1" = 1'-0"



6 HYDRAPRESSED SLABS - ON SLAB
L301 Scale = 1" = 1'-0"

TREE PLANTING NOTES

1. All street trees to be staked with 2 - 100mmØ x 2.5m long. Minimum depth of stake embedment is 1m. Ensure stakes do not penetrate or damage rootball. Ensure all stakes are aligned parallel to sidewalk/road on tree pit centreline.
2. Do not cut Tree Leader.
3. Ensure tree location does not conflict with Underground Services. "Call before digging".
4. Protect tree from damage during planting. Ensure rootball protected from Sun, Frost or Desiccation.
5. Provide min. 5 cubic meters of growing medium per tree, unless otherwise stated.
6. Refer to Growing Medium Chart below for surface area depth of Growing Medium.



Depth	10 Cubic Meter - Soil Volume			5 Cubic Meter - Soil Volume		
	Growing Medium Subgrade (mm)	Area (m ²)	SQUARE Size of Surface	CIRCLE Size of Surface	Area (m ²)	SQUARE Size of Surface
450	22.10	4.7m x 4.7m	7.05 M Ø	11.11	3.3m x 3.3m	3.80 M Ø
600	16.80	4.1m x 4.1m	5.17 M Ø	8.33	2.9m x 2.9m	3.25 M Ø
750	13.70	3.7m x 3.7m	4.36 M Ø	6.67	2.6m x 2.6m	2.90 M Ø

7 TYPICAL TREE PLANTING
L301 Scale = NTS

1 2024-05-06 ISSUED FOR REVIEW

no.: | date: | item: | by:

Revisions:

Stamp:



DURANTE KREUK LTD. LANDSCAPE ARCHITECTS
102 - 1637 West 5th Avenue Vancouver B.C. V6J 1N5
P 604.684.4611 | F 604.684.0577 | www.dk.bc.ca

Client:

Project:

**6384 Bruce St. -
Daycare, Horseshoe
Bay**

**6384 Bruce St., West
Vancouver, British Columbia**

Drawn by: SM

Checked by: SV

Date: 2023-12-15

Scale: AS NOTED

Drawing Title:

DETAILS

Project No.:
23085

Sheet No.:

L301