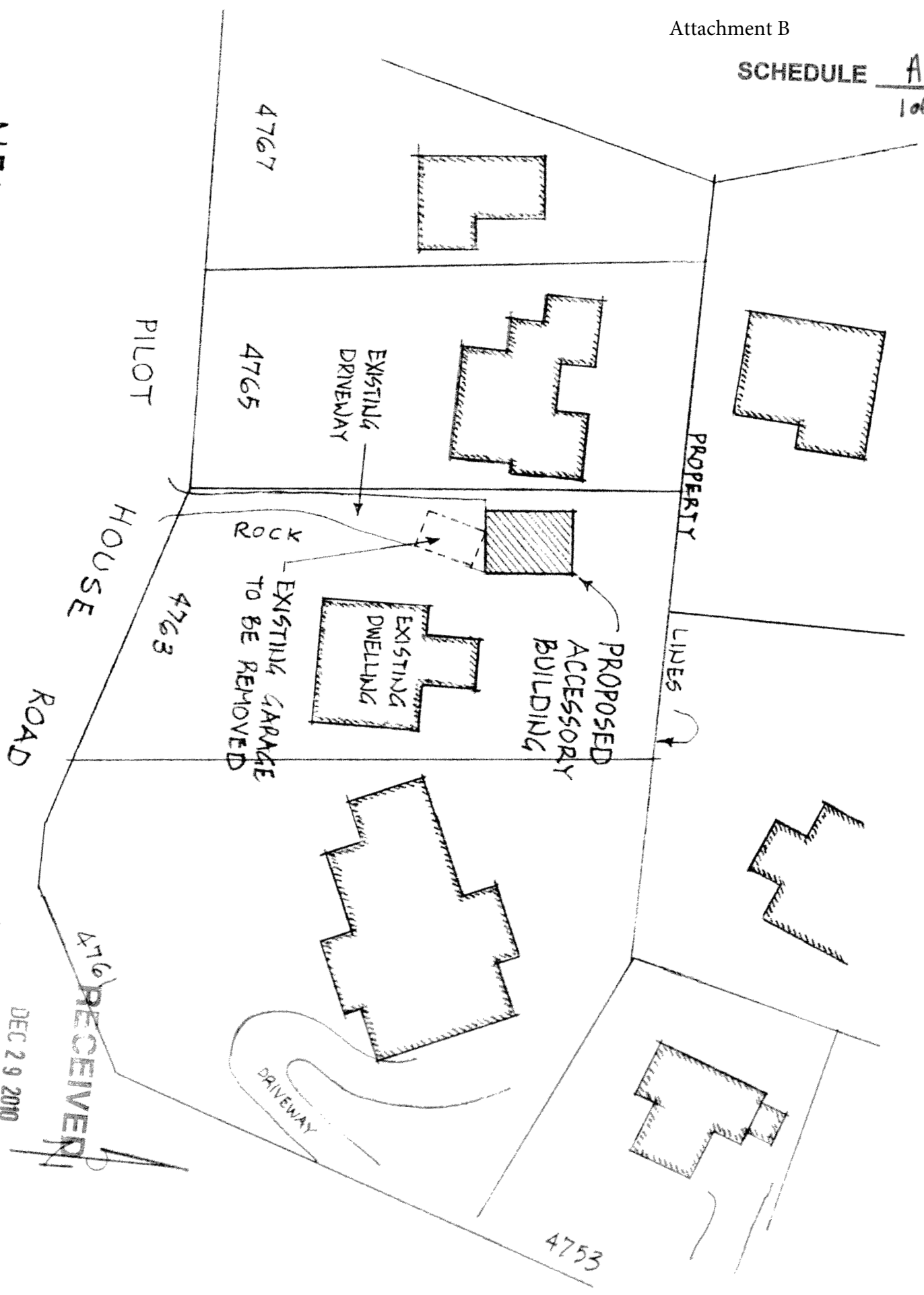
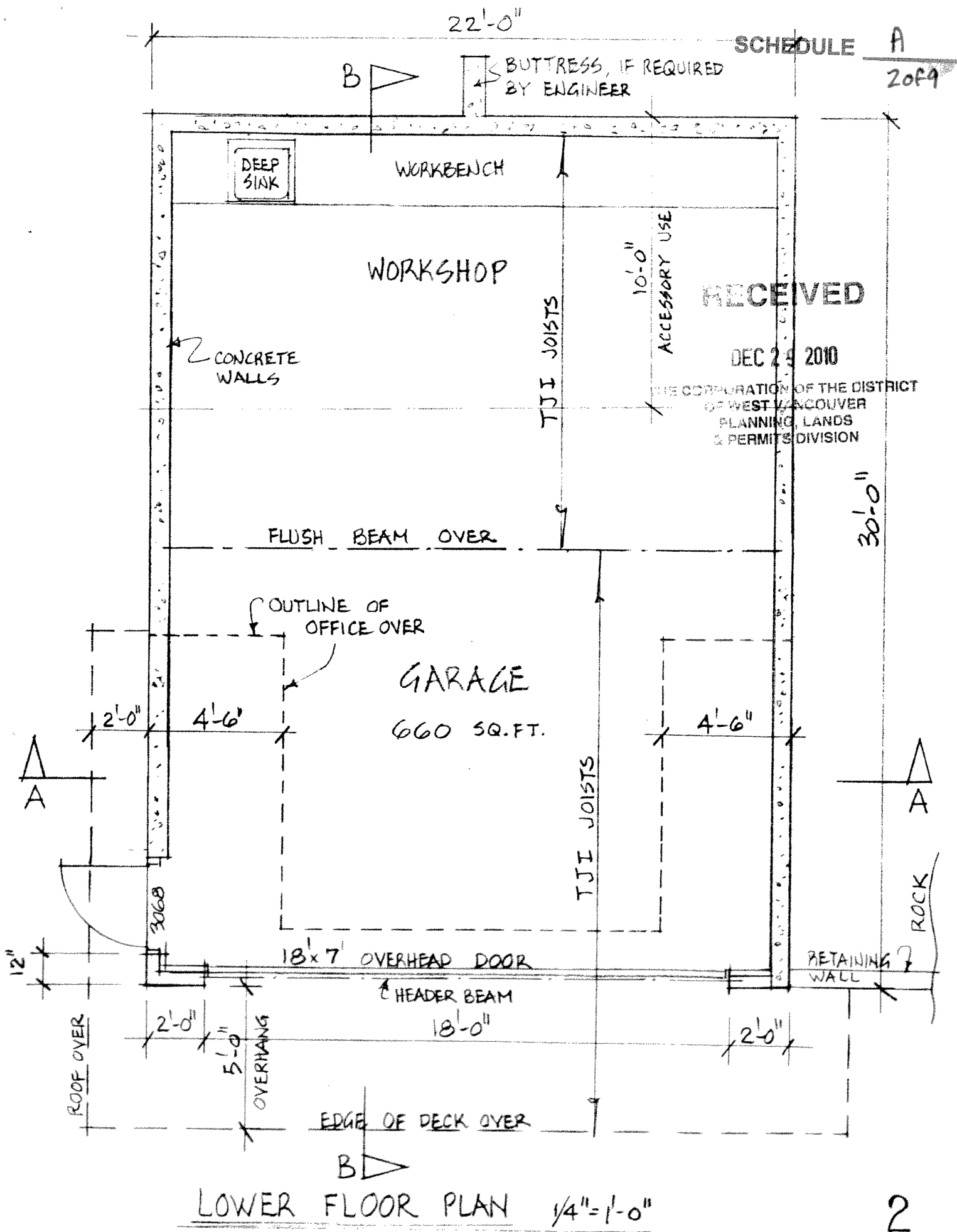


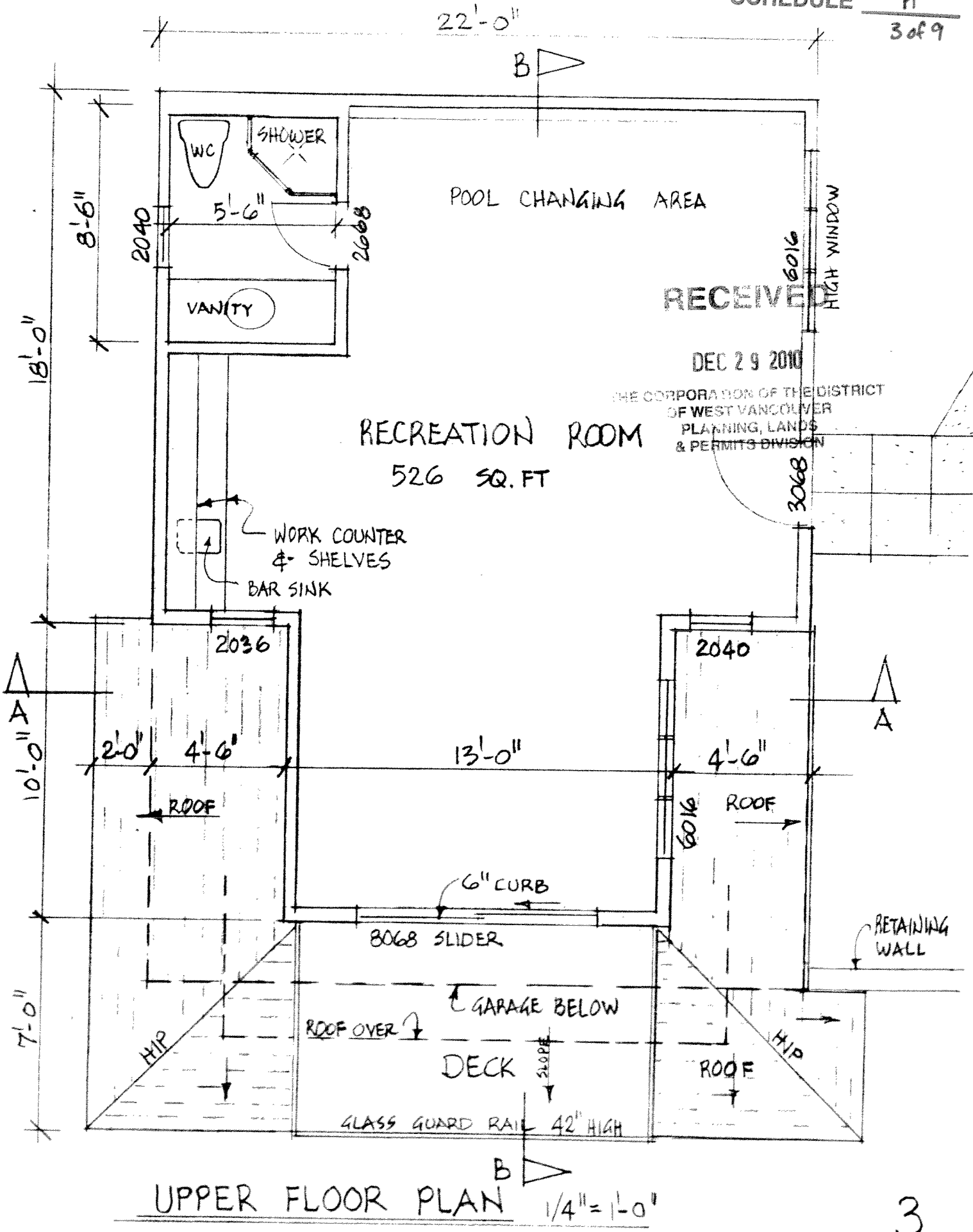
NEIGHBORHOOD
CONTEXT
PLAN



DEC 29 2010

THE CORPORATION OF THE DISTRICT
OF WEST VANCOUVER
PLANNING, LANDS
& PERMITS DIVISION

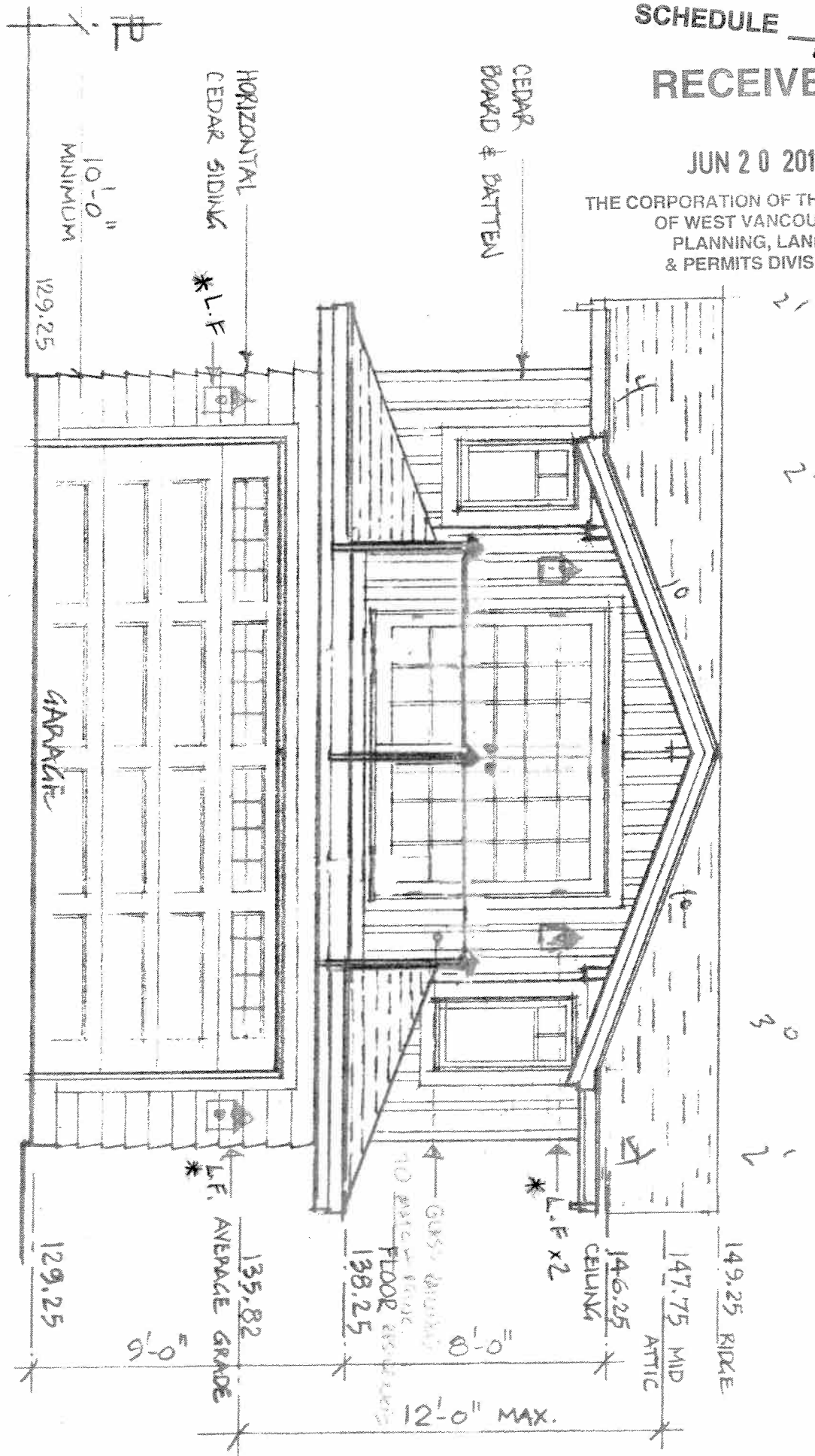




UPPER FLOOR PLAN $\frac{1}{4}'' = 1'-0''$

JUN 20 2011

THE CORPORATION OF THE DISTRICT
OF WEST VANCOUVER
PLANNING, LANDS
& PERMITS DIVISION



COLOUR SCHEME :

1° - IVORY WHITE (OFF-WHITE)

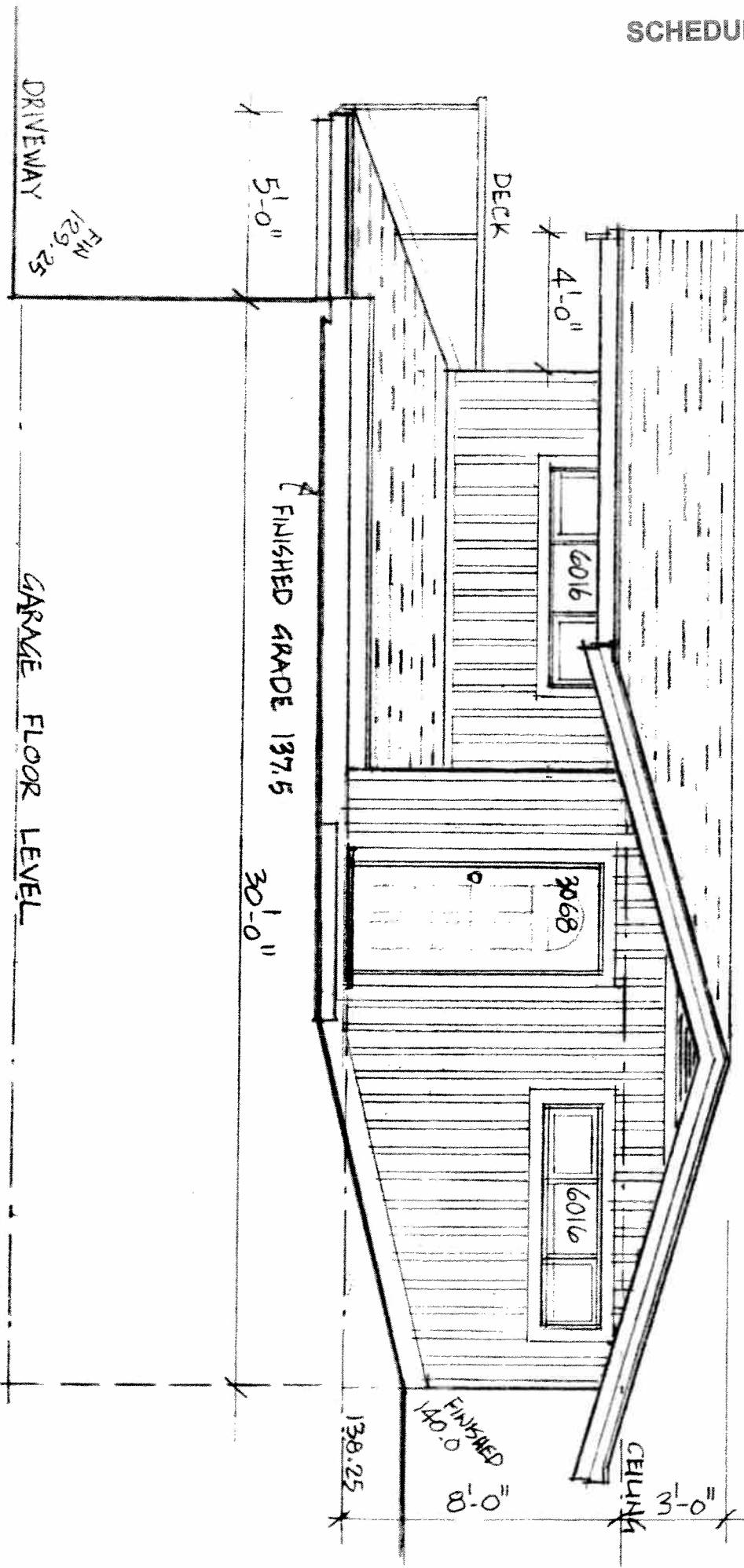
2° - SANDSTONE BEIGE

(COLOURS MATCH PRINCIPAL RESIDENCE EXACTLY.)

SOUTH ELEVATION

1/4" = 1'-0"

* MINIMAL EXT. LIGHT FIXTURES
DOWN LIGHTS ONLY - NO FLOODS



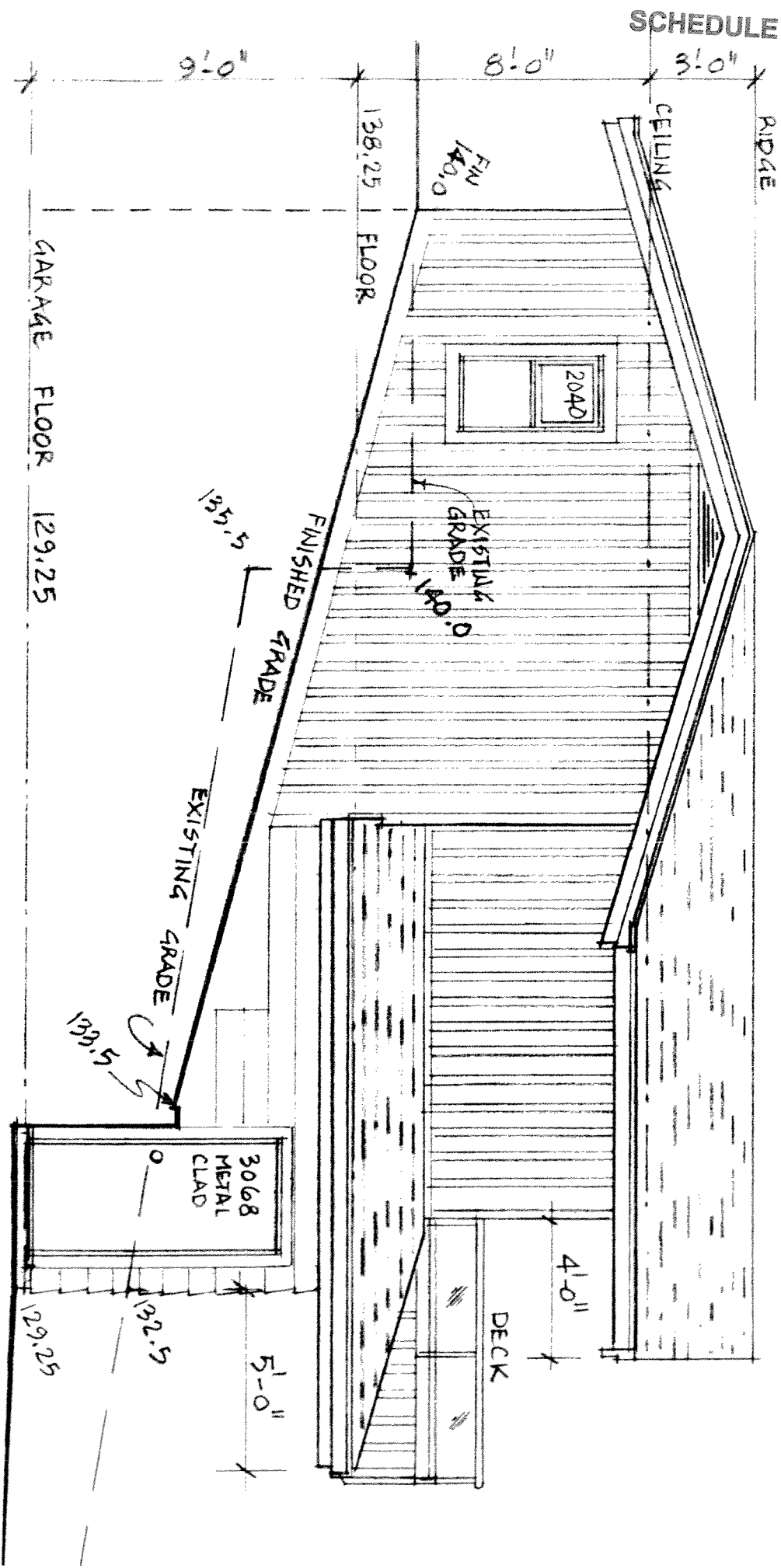
EAST ELEVATION

1/4" = 1'-0"

RECEIVED

DEC 29 2010

THE CORPORATION OF THE DISTRICT
OF WEST VANCOUVER
PLANNING, LANDS
& PERMITS DIVISION



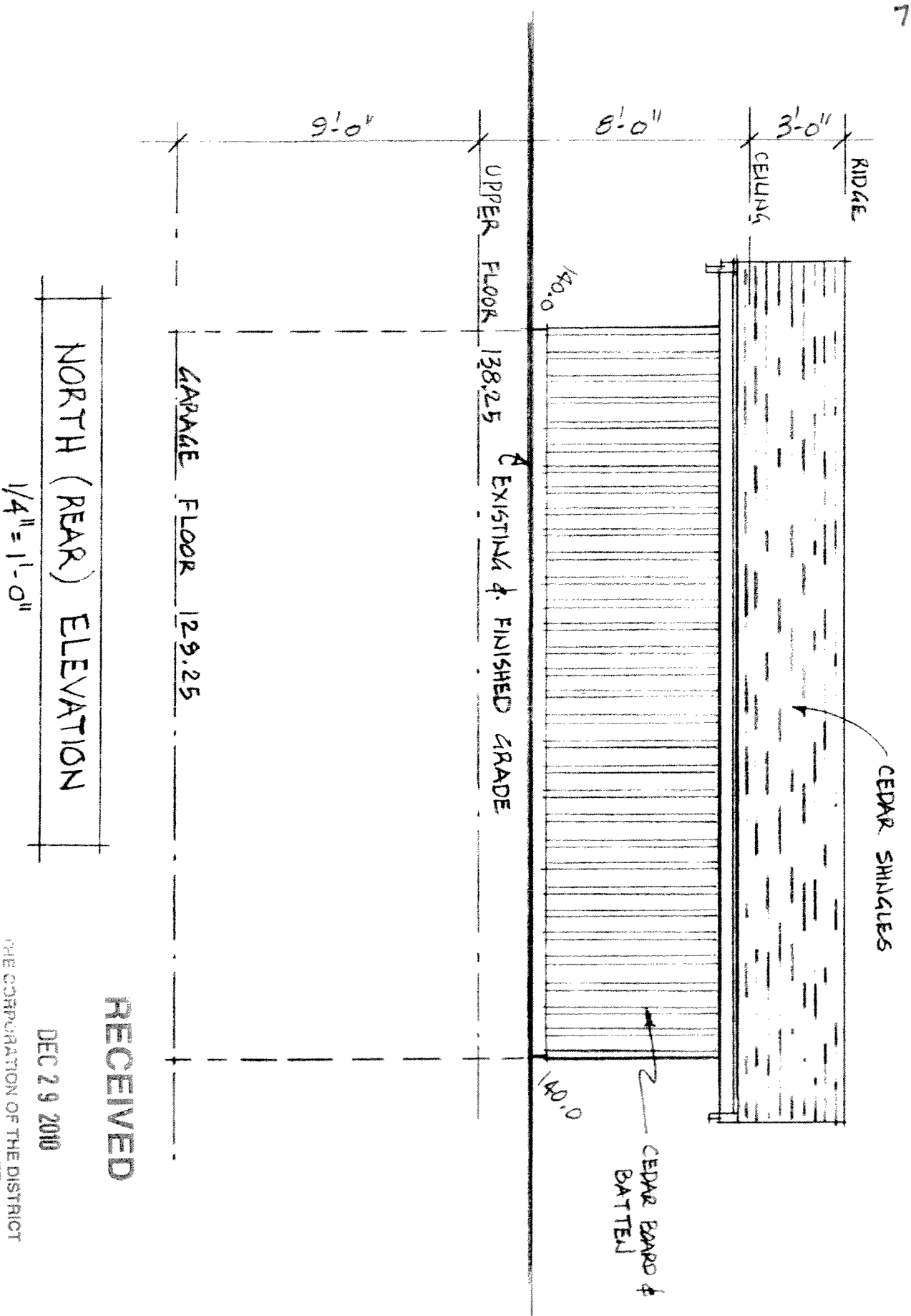
WEST ELEVATION

1/4" = 1'-0"

RECEIVED

DEC 29 2010

THE CORPORATION OF THE DISTRICT
OF WEST VANCOUVER
PLANNING, LANDS
& PERMITS DIVISION



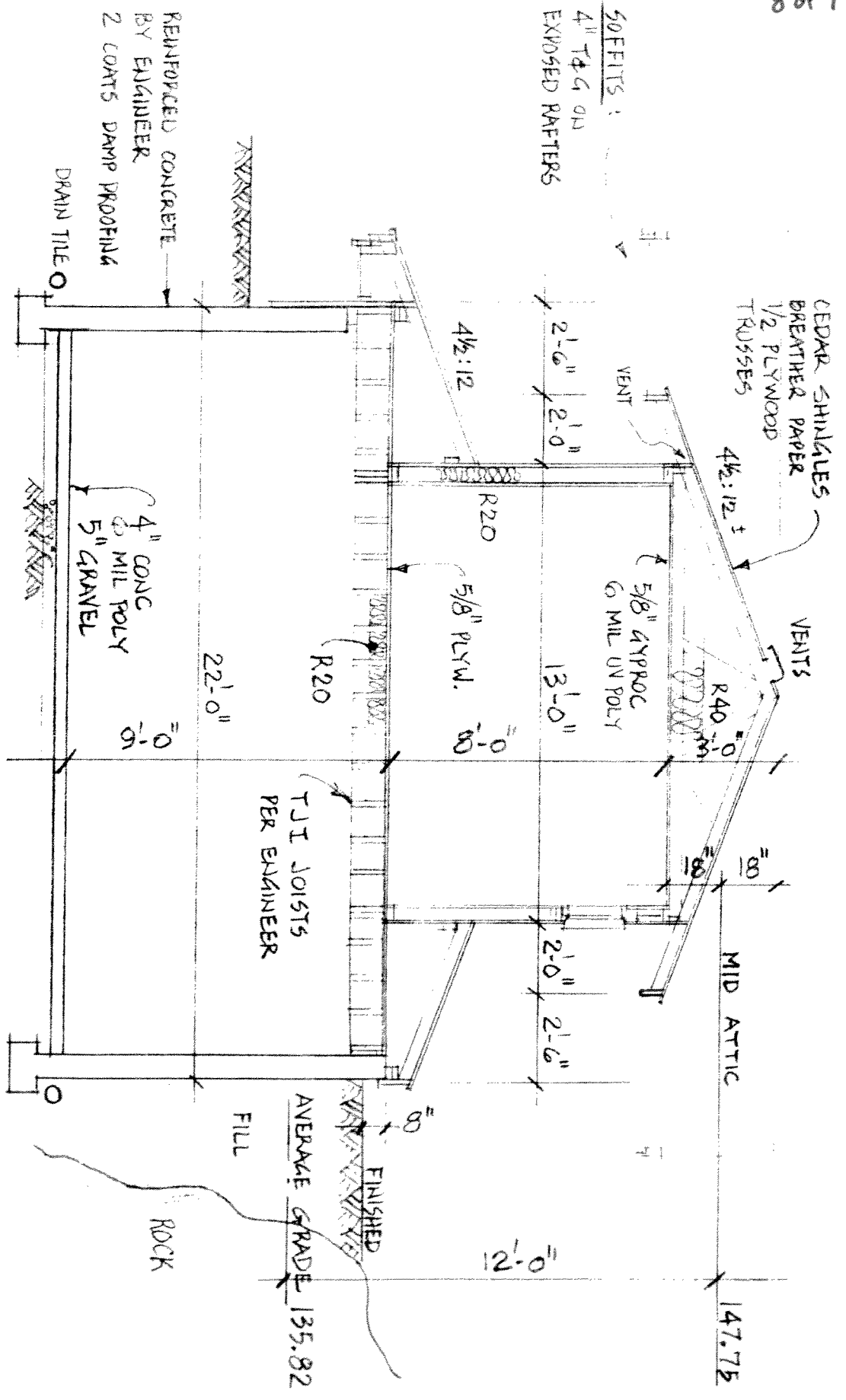
NORTH (REAR) ELEVATION

1/4" = 1'-0"

RECEIVED

THE CORPORATION OF THE DISTRICT
OF WEST VANCOUVER
PLANNING, LANDS
& PERMITS DIVISION

DEC 29 2010



SOFFITS :
4" T&G GD
EXPOSED RAFTERS

CEDAR SHINGLES
BREATHER PAPER
1/2 PLYWOOD
TRUSSES

VENTS

5/8" GYPROC
6 MIL UV POLY

13'-0"

R20

4 1/2'-12"

VENT

2'-0" 2'-0"

R20

13'-0"

TJI JOISTS
PER ENGINEER

MID ATTIC

2'-0" 2'-0"

FINISHED

AVERAGE GRADE 135.82

FILL

ROCK

REINFORCED CONCRETE
BY ENGINEER
2 COATS DAMP PROOFING

DRAIN TILE

TYPICAL EXTERIOR STUD WALL:

- CEDAR BOARD & BATTEN
- 2 LAYERS 30 MINUTE PAPER
- 1/2" PLYWOOD
- 2"x6" STUDS @ 16" O.C.
- R 20 BATT INSULATION
- 6 MIL UV POLY
- 1/2" GYPROC.

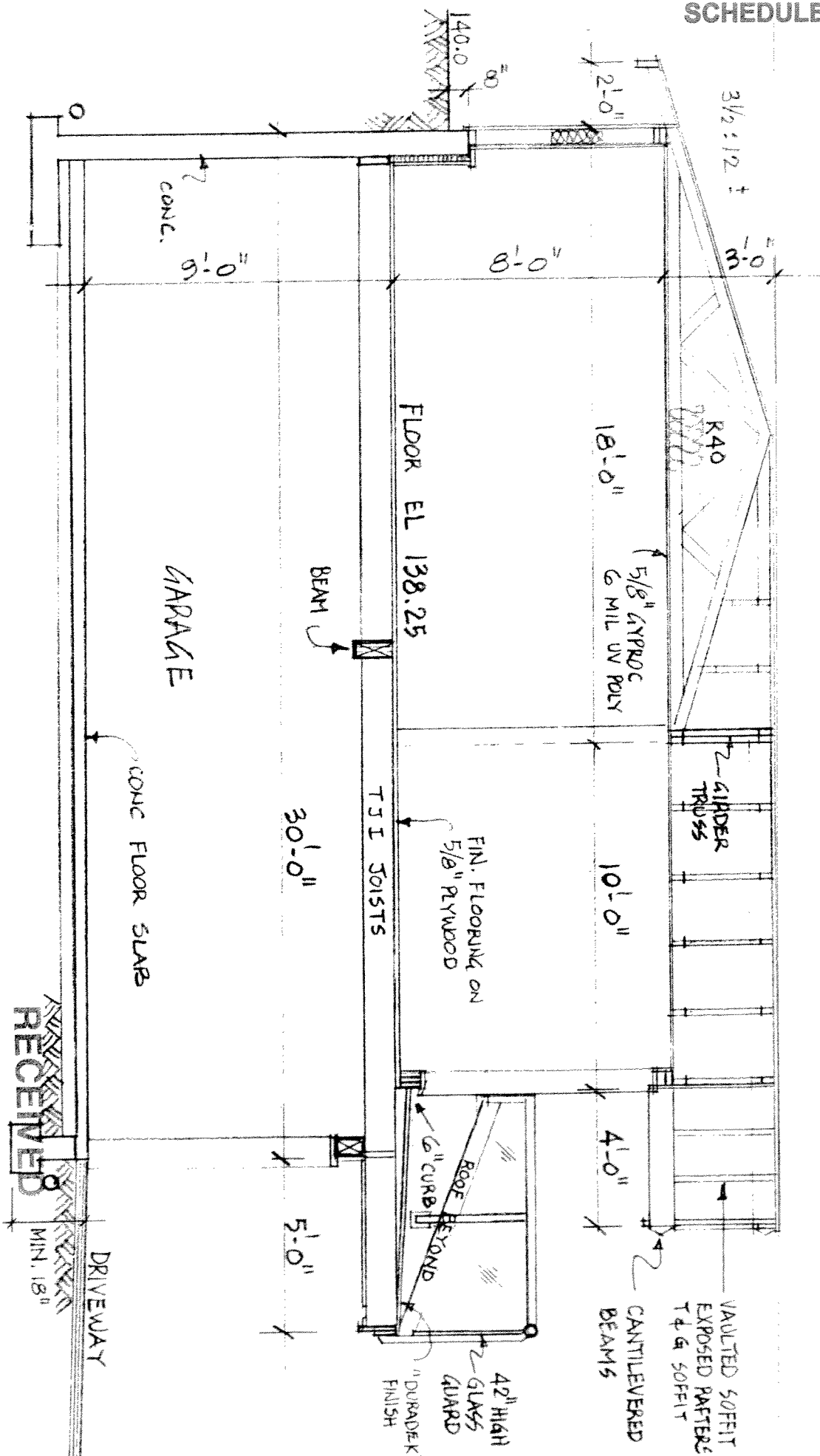
SECTION A-A

1/4" = 1'-0"

RECEIVED

DEC 29 2010

THE CORPORATION OF THE DISTRICT
OF WEST VANCOUVER
PLANNING, LANDS
& PERMITS DIVISION



SECTION B-B

1/4" = 1'-0"

DEC 29 2010

THE CORPORATION OF THE DISTRICT
OF WEST VANCOUVER
PLANNING, LANDS
& PERMITS DIVISION

RECEIVED

MIN. 18"

DRIVEWAY