

Copyright of this drawing and design is reserved by Studio Balcaen Kwan Architecture and Design Inc. (the architects). This drawing and all associated documents are an instrument of service by the architects. This drawing and the information contained therein may not be reproduced in whole or in part without prior written permission of the architects. This drawing is not to be used for construction until issued for that purpose by the architects. Prior to commencement of the work the contractor shall verify all dimensions, datums, and levels and shall bring any discrepancies between this drawing and the full contract documents or site conditions to the attention of the architects for clarification.

Studio
Balcaen
Kwan
Architecture
and Design Inc.

1359 Cartwright Street, Suite 200
Vancouver BC Canada V6H 3R7
604.612.9288
778.846.3279
tillie@studiobalcaenkwan.com
bettina@studiobalcaenkwan.com
www.studiobalcaenkwan.com



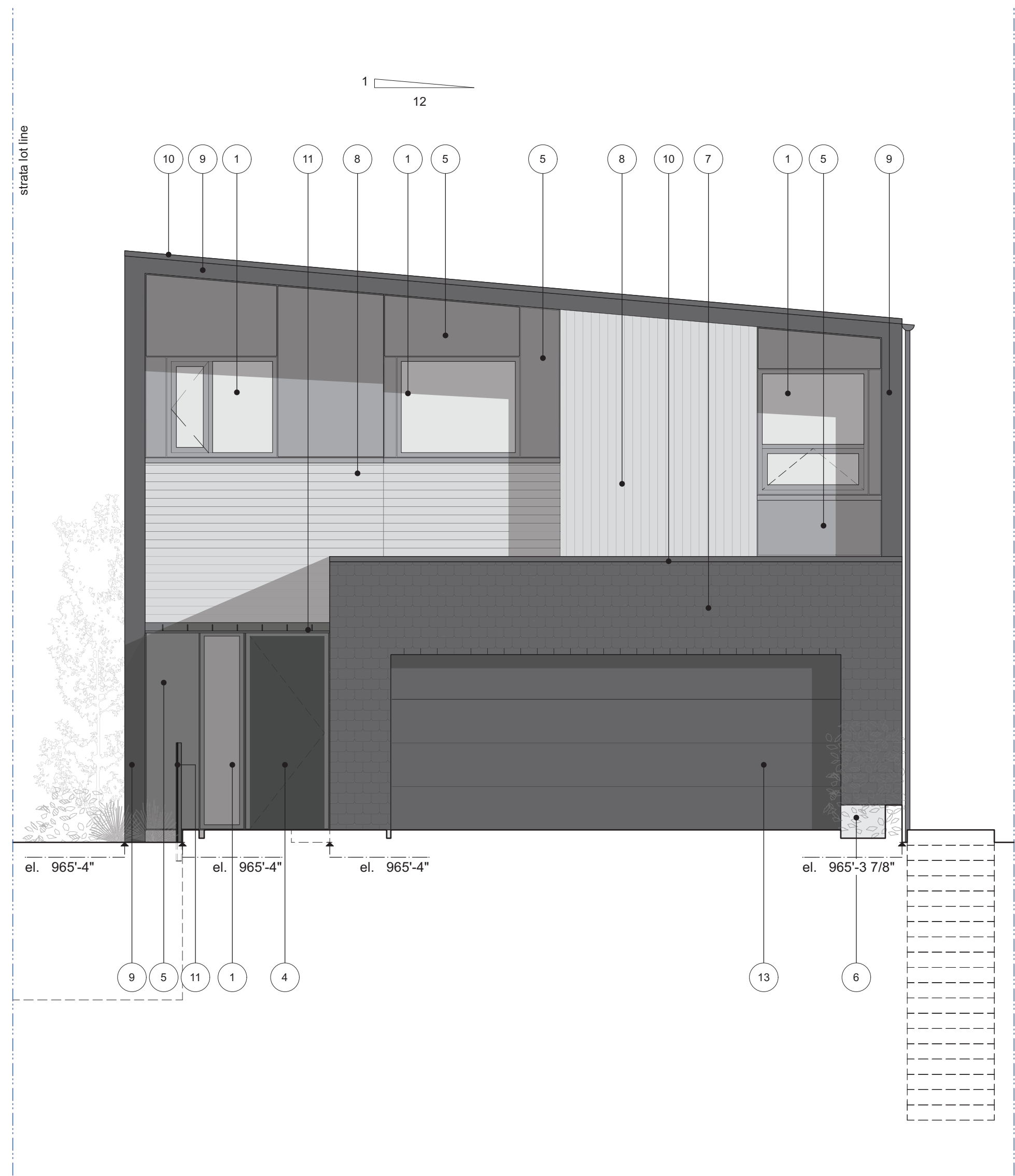
ISSUE
E 2023-09-18 re-issued for DP
F 2025-08-15 issued for DP amendment

Uplands Lot 14

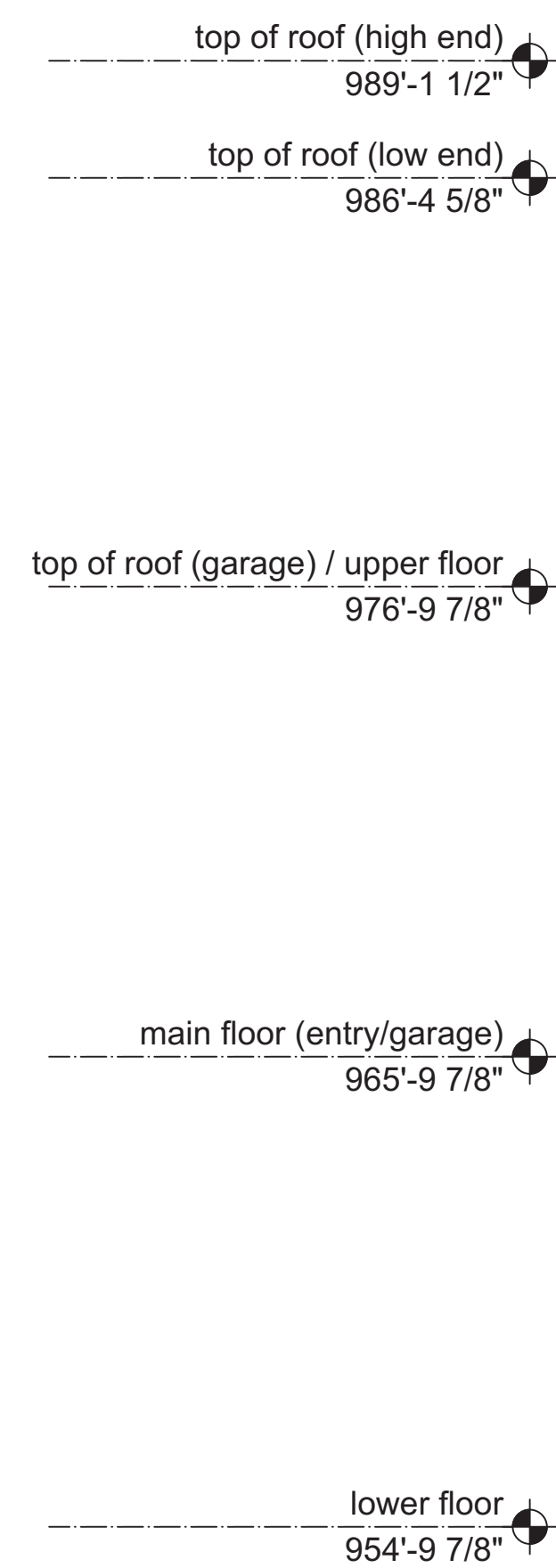
W Vancouver BC

Elevations - Type 1
Scale As Noted

A3.0



1 Elevation - north
Scale: 1/4" = 1'-0"

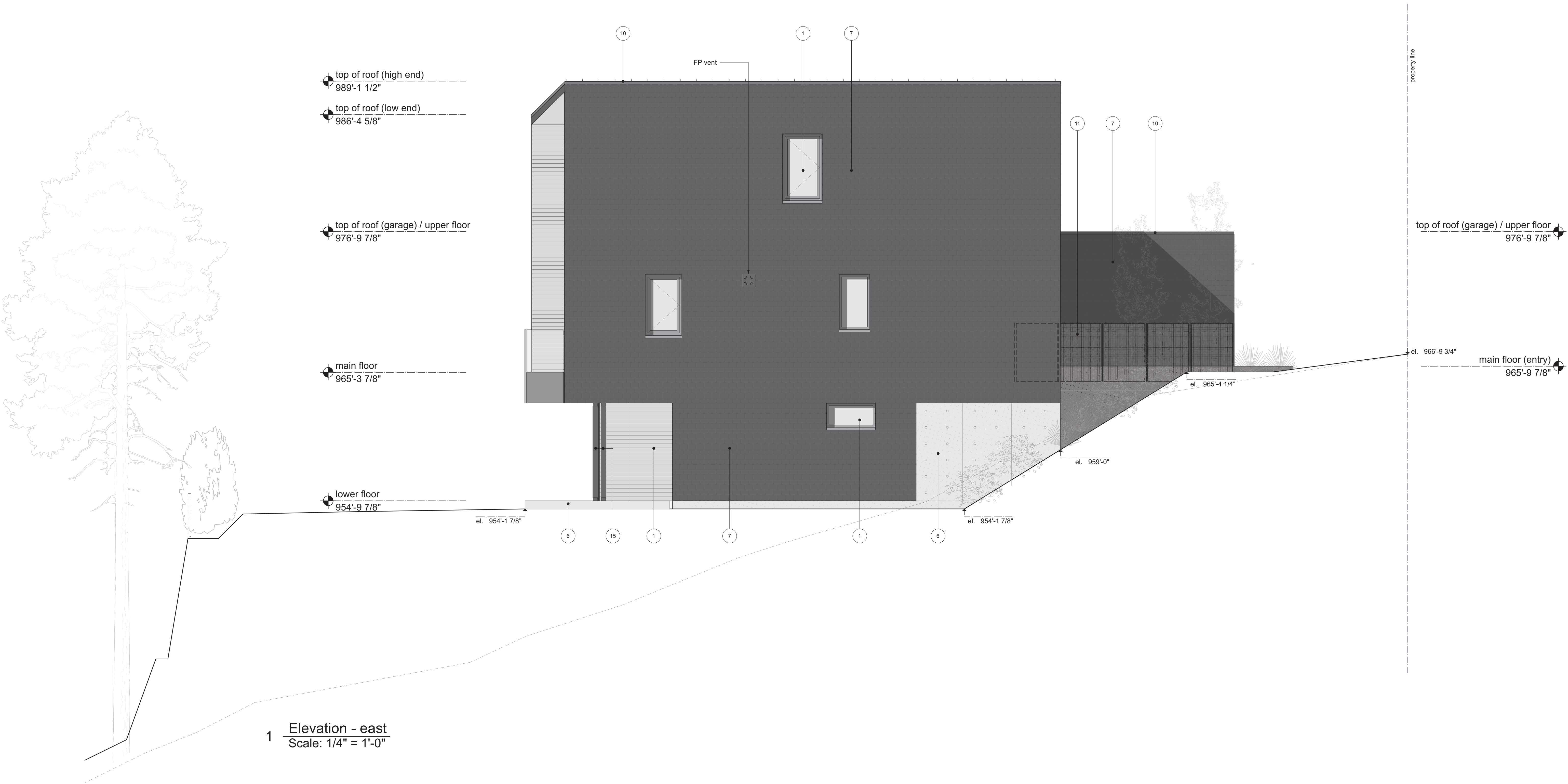


2 Elevation - south
Scale: 1/4" = 1'-0"

FINISH SCHEDULE - EXTERIOR

- | | |
|--------------------------------------------------------------------------------------------|-----------------------------------------------------------------------------------------------|
| 1 window (Westeck, Kendall Charcoal DC4972) | 8 fiber cement horizontal and vertical siding ('weathered grey' finish) |
| 2 exterior swing door with glazed lite (Westeck, Kendall Charcoal DC4972) | 9 fiber cement panel (SW Pewter Green) |
| 3 exterior sliding door with glazed lite (Westeck, Kendall Charcoal DC4972) | 10 aluminum flashing (24 gauge) - (Cascadia Metal, Old Zinc Grey) |
| 4 exterior swing door solid (BM CSP-450 Bewitched) | 11 metal work - canopy, handrail, guard rail & support (powder coated to match Old Zinc Grey) |
| 5 trim/panel to match colour/finish of adj. door/window frame (BM HC-166 Kendall Charcoal) | 12 1/2" tempered glass guard |
| 6 exposed architectural concrete (w/ a light sandblasted finish) | 13 overhead garage door (SW Pewter Green) |
| 7 fiber cement shingle (SW Pewter Green - with light and dark variation) | 14 standing seam metal roof (Cascadia Metal, Old Zinc Grey) |
| | 15 structural columns (painted BM HC-166 Kendall Charcoal) |

Copyright of this drawing and design is reserved by Studio Balcaen Kwan Architecture and Design Inc. (the architects). This drawing and all associated documents are an instrument of service by the architects. This drawing and the information contained therein may not be reproduced in whole or in part without prior written permission of the architects. This drawing is not to be used for construction until issued for that purpose by the architects. Prior to commencement of the work the contractor shall verify all dimensions, datums, and levels and shall bring any discrepancies between this drawing and the full contract documents or site conditions to the attention of the architects for clarification.



1 Elevation - east
Scale: 1/4" = 1'-0"

Studio
Balcaen
Kwan
Architecture
and Design Inc.

1359 Cartwright Street, Suite 200
Vancouver BC Canada V6H 3R7
604.612.9288
778.846.3279
tillie@studiobalcaenkwan.com
bettina@studiobalcaenkwan.com
www.studiobalcaenkwan.com



Issue
E 2023-09-18 re-issued for DP
F 2025-08-15 issued for DP amendment

Uplands Lot 14

W Vancouver BC

Elevations - Type 1
Scale As Noted

A3.1

Copyright of this drawing and design is reserved by Studio Balcaen Kwan Architecture and Design Inc. (the architects). This drawing and all associated documents are an instrument of service by the architects. This drawing and the information contained therein may not be reproduced in whole or in part without prior written permission of the architects. This drawing is not to be used for construction until issued for that purpose by the architects. Prior to commencement of the work the contractor shall verify all dimensions, datums, and levels and shall bring any discrepancies between this drawing and the full contract documents or site conditions to the attention of the architects for clarification.

Studio
Balcaen
Kwan
Architecture
and Design Inc.

1359 Cartwright Street, Suite 200
Vancouver BC Canada V6H 3R7
604.612.9288
778.846.3279
tillie@studiobalcaenkwan.com
bettina@studiobalcaenkwan.com
www.studiobalcaenkwan.com



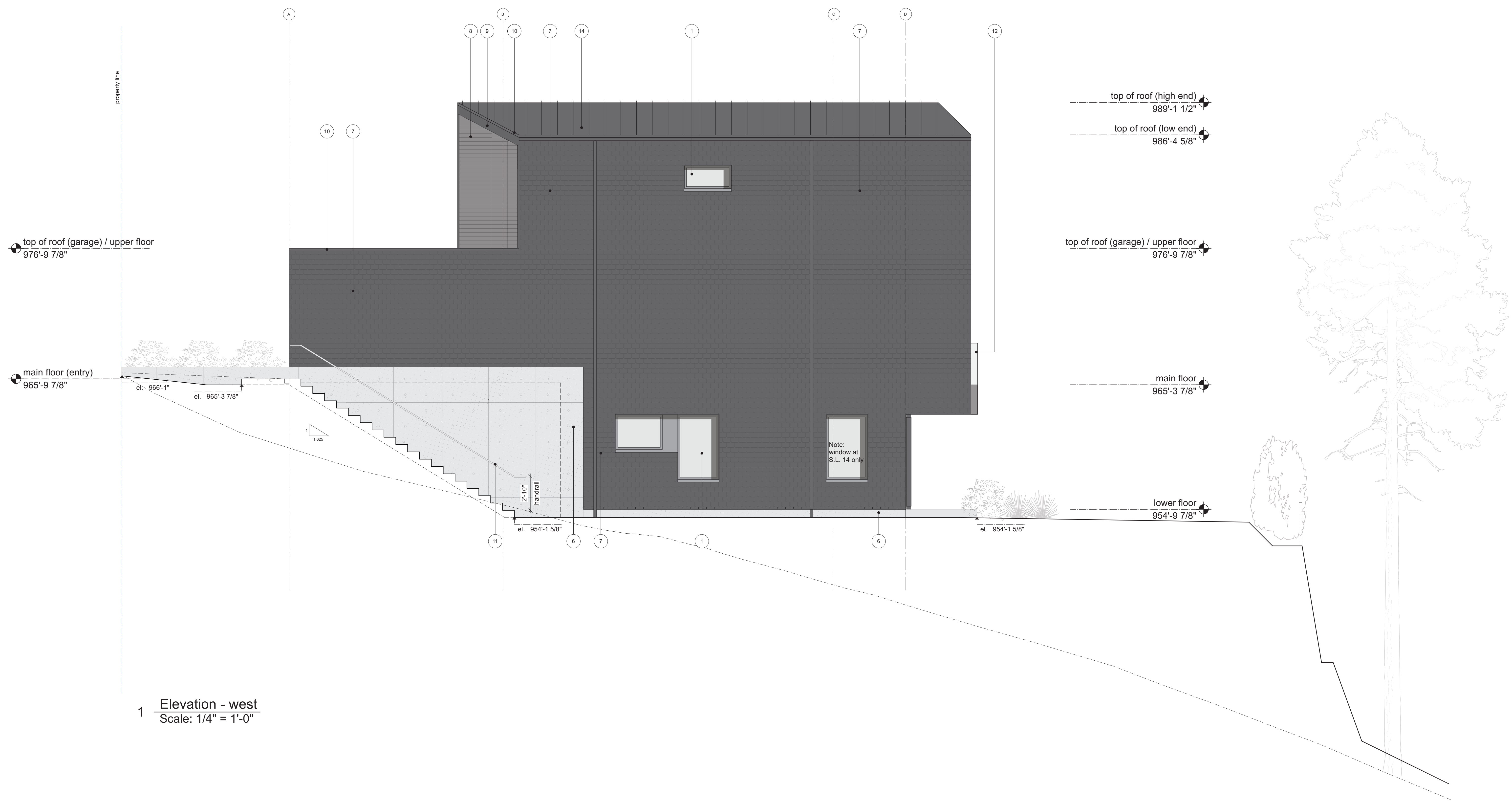
Issue
E 2023-09-18 re-issued for DP
F 2025-08-15 issued for DP amendment

Uplands Lot 14

W Vancouver BC

Elevations - Type 1
Scale As Noted

A3.2



1 Elevation - west
Scale: 1/4" = 1'-0"

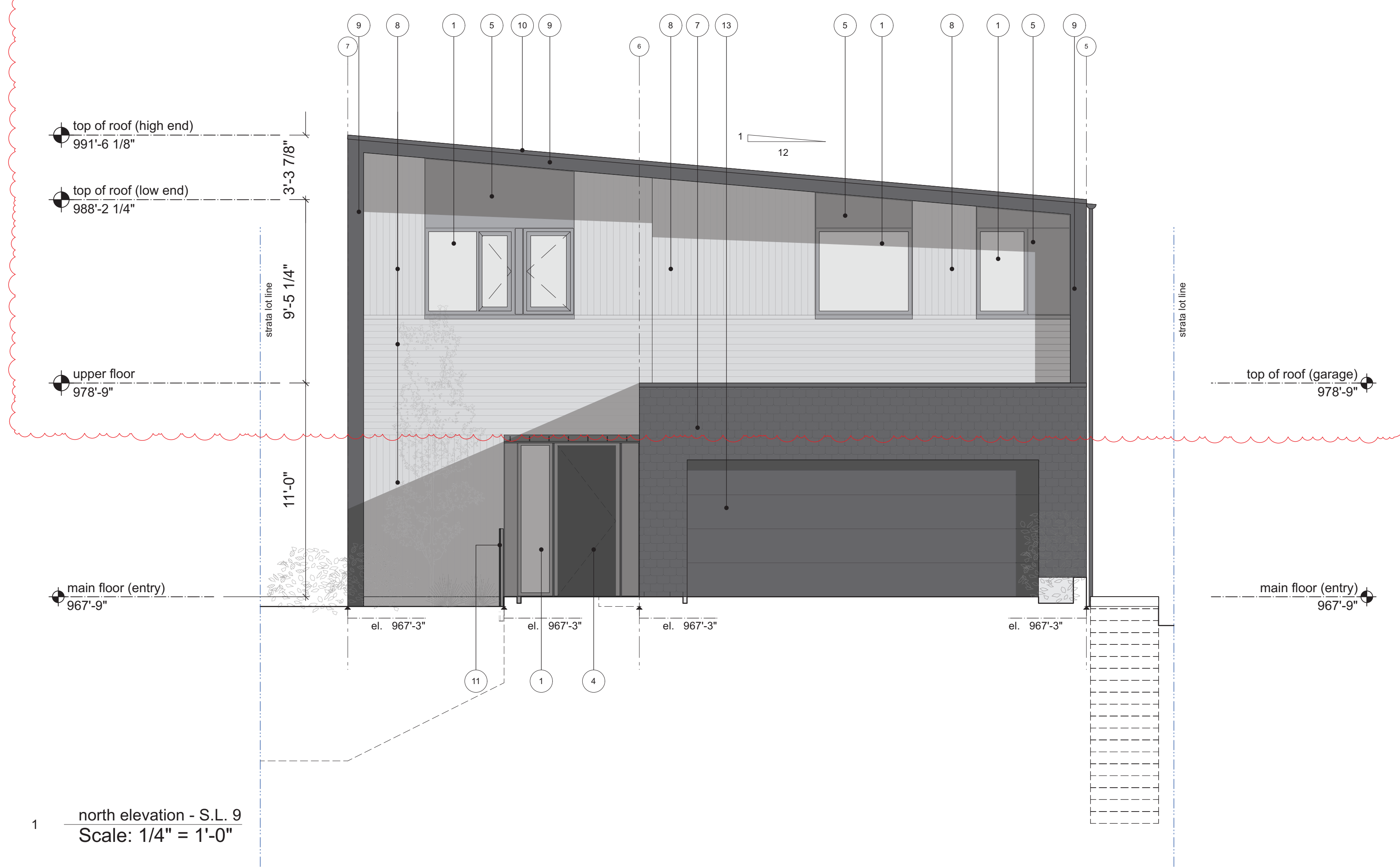
Copyright of this drawing and design is reserved by Studio Balcaen Kwan Architecture and Design Inc. (the architects). This drawing and all associated documents are an instrument of service by the architects. This drawing and the information contained therein may not be reproduced in whole or in part without prior written permission of the architects. This drawing is not to be used for construction until issued for that purpose by the architects. Prior to commencement of the work the contractor shall verify all dimensions, datums, and levels and shall bring any discrepancies between this drawing and the full contract documents or site conditions to the attention of the architects for clarification.

Studio
Balcaen
Kwan
Architecture
and Design Inc.

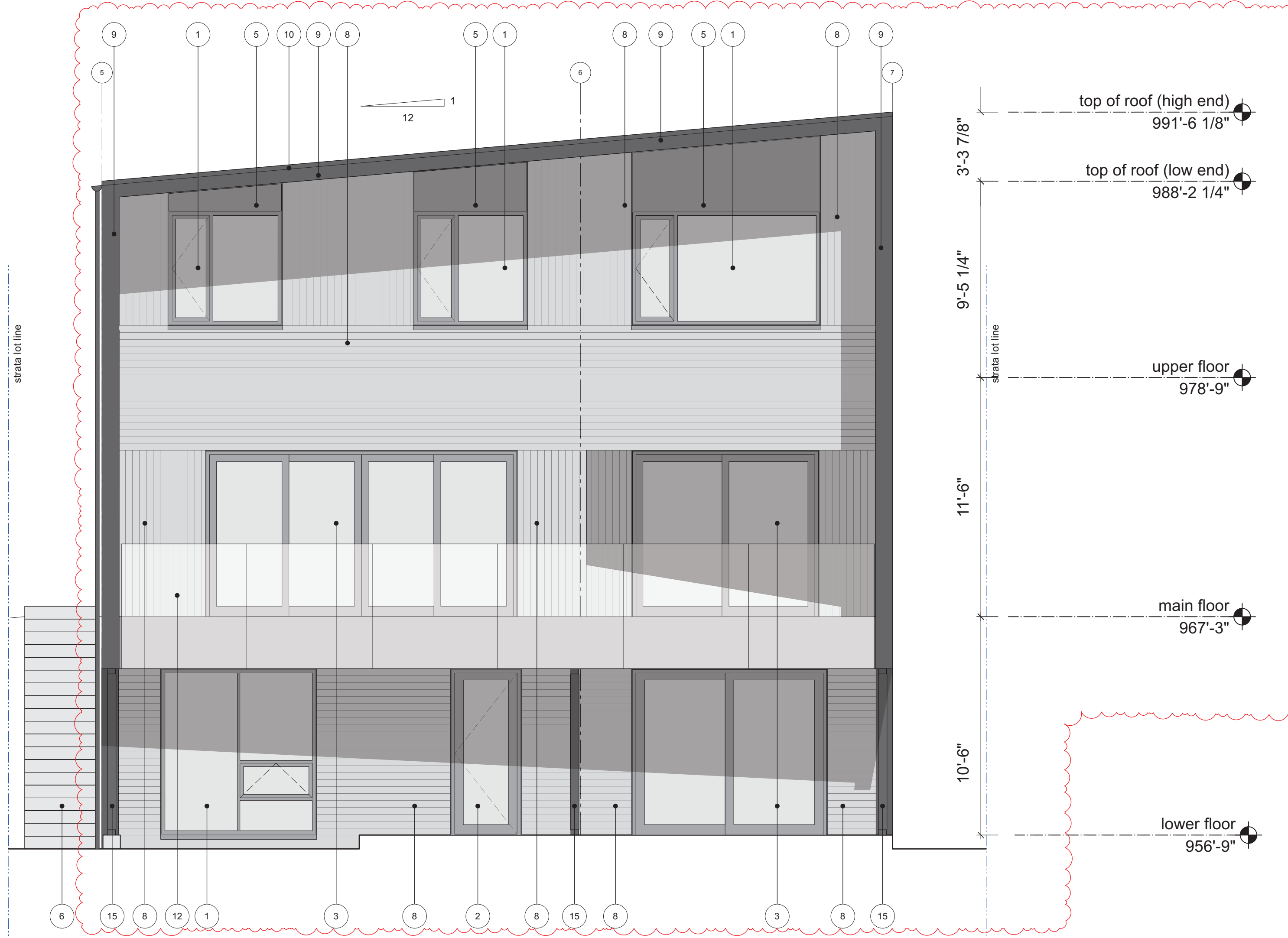
1359 Cartwright Street, Suite 200
Vancouver BC Canada V6H 3R7
604.612.9288
778.846.3279
tillie@studiobalcaenkwan.com
bettina@studiobalcaenkwan.com
www.studiobalcaenkwan.com

FINISH SCHEDULE - EXTERIOR

- 1 window (Westeck, Kendall Charcoal DC4972)
- 2 exterior swing door with glazed lite (Westeck, Kendall Charcoal DC4972)
- 3 exterior sliding door with glazed lite (Westeck, Kendall Charcoal DC4972)
- 4 exterior swing door solid (BM CSP-450 Bewitched)
- 5 trim/panel to match colour/finish of adj. door/window frame (BM HC-166 Kendall Charcoal)
- 6 exposed architectural concrete (w/ a light sandblasted finish)
- 7 fiber cement shingle (SW Pewter Green - with light and dark variation)
- 8 fiber cement horizontal and vertical siding ('weathered grey' finish)
- 9 fiber cement panel (SW Pewter Green)
- 10 aluminum flashing (24 gauge) - (Cascadia Metal, Old Zinc Grey)
- 11 metal work - canopy, handrail, guard rail & support (powder coated to match Old Zinc Grey)
- 12 1/2" tempered glass guard
- 13 overhead garage door (SW Pewter Green)
- 14 standing seam metal roof (Cascadia Metal, Old Zinc Grey)
- 15 structural columns (painted BM HC-166 Kendall Charcoal)



1 north elevation - S.L. 9
Scale: 1/4" = 1'-0"



2 south elevation - S.L. 9
Scale: 1/4" = 1'-0"



Issue
E 2023-09-18 re-issued for DP
F 2025-08-15 issued for DP amendment

Uplands Lot 14

W Vancouver BC

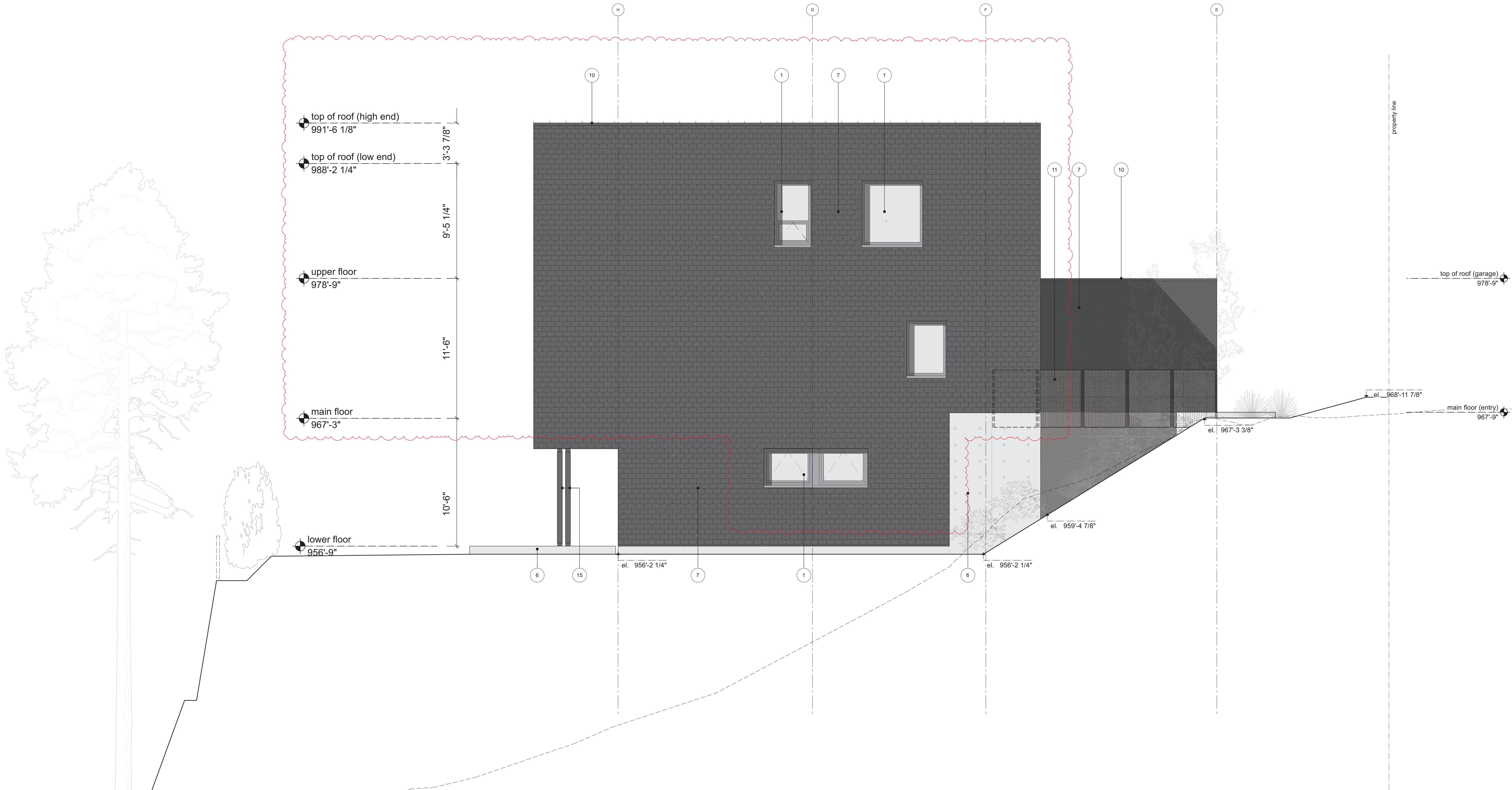
Elevations - Type 2
Scale As Noted

A3.3

Copyright of this drawing and design is reserved by Studio Balcaen Kwan Architecture and Design Inc. (the architects). This drawing and all associated documents are an instrument of service by the architects. This drawing and the information contained therein may not be reproduced in whole or in part without prior written permission of the architects. This drawing is not to be used for construction until issued for that purpose by the architects. Prior to commencement of the work the contractor shall verify all dimensions, datums, and levels and shall bring any discrepancies between this drawing and the full contract documents or site conditions to the attention of the architects for clarification.

Studio
Balcaen
Kwan
Architecture
and Design Inc.

1359 Cartwright Street, Suite 200
Vancouver BC Canada V6H 3R7
604.612.9288
778.846.3279
tillie@studiobalcaenkwan.com
bettina@studiobalcaenkwan.com
www.studiobalcaenkwan.com



1 east elevation - S.L. 9
Scale: 1/4" = 1'-0"

FINISH SCHEDULE - EXTERIOR

- | | | | |
|---|------------------------------------------------------------------------------------------|----|--------------------------------------------------------------------------------------------|
| 1 | window (Westeck, Kendall Charcoal DC4972) | 8 | fiber cement horizontal and vertical siding ('weathered grey' finish) |
| 2 | exterior swing door with glazed lite (Westeck, Kendall Charcoal DC4972) | 9 | fiber cement panel (SW Pewter Green) |
| 3 | exterior sliding door with glazed lite (Westeck, Kendall Charcoal DC4972) | 10 | aluminum flashing (24 gauge) - (Cascadia Metal, Old Zinc Grey) |
| 4 | exterior swing door solid (BM CSP-450 Bewitched) | 11 | metal work - canopy, handrail, guard rail & support (powder coated to match Old Zinc Grey) |
| 5 | trim/panel to match colour/finish of adj. door/window frame (BM HC-166 Kendall Charcoal) | 12 | 1/2" tempered glass guard |
| 6 | exposed architectural concrete (w/ a light sandblasted finish) | 13 | overhead garage door (SW Pewter Green) |
| 7 | fiber cement shingle (SW Pewter Green - with light and dark variation) | 14 | standing seam metal roof (Cascadia Metal, Old Zinc Grey) |
| | | 15 | structural columns (painted BM HC-166 Kendall Charcoal) |



Issue
E 2023-09-18 re-issued for DP
F 2025-08-15 issued for DP amendment

Uplands Lot 14

W Vancouver BC

Elevations - Type 2
Scale As Noted

A3.4