

1 SITE PLAN - LANDSCAPE
SCALE: 1/8" = 1'-0"

NOTES:

- ALL PLANT MATERIAL SHALL MEET OR EXCEED STANDARDS REQUIRED BY BCNTA OR BCSLA GUIDELINES.
- REFER TO ARBORIST REPORT AND DRAWINGS PREPARED BY ACER TREE SERVICES FOR ALL RELATED TREE REMOVAL AND TREE RETENTION REQUIREMENTS.
- TOPSOIL SUPPLIED SHALL BE FROM A REPUTABLE SOURCE. A FULL ANALYSIS OF THE TOPSOIL WILL BE REQUIRED AT THE CONTRACTOR'S EXPENSE. SUBMIT TO LANDSCAPE CONSULTANT FOR APPROVAL.
- AMMEND TOPSOIL PER SOIL ANALYSIS RECOMMENDATIONS PRIOR TO SPREADING ON SITE. REJECTED TOPSOIL SHALL BE REMOVED OFF SITE IMMEDIATELY AT THE LANDSCAPE CONTRACTORS EXPENSE.
- TOPSOIL DEPTHS FOR PLANTING AS FOLLOWS:
A. GRASSED AREAS: 450MM
B. GROUND COVERS: 450MM
C. SHRUBS: 450MM
D. TREE PITS: 100U METERS PER TREE PIT - ALSO SEE LANDSCAPE DRAWING L-8 (SOIL VOLUMES)
- LAWN AREAS SHALL BE SODDED WITH #1 PREMIUM RESIDENTIAL SOD, NON NETTED.
- ALL SHRUB PLANTING AREAS SHALL HAVE GROUND COVERS 14" O.C.
- 2" DEPTH OF 1"MINUS COMPOST MULCH TO BE INSTALLED IN ALL SHRUB PLANTING AREAS.
- IRRIGATION SYSTEM - (AUTOMATIC) SHALL BE DESIGN BUILT TO BE COORDINATED BY GENERAL CONTRACTOR.
- ROCK AND BOULDER MATERIALS
ALL BOULDERS SHALL BE SMOOTH FINISH SOURCED FROM RIVER OR FIELD. DO NOT SUPPLY STRAIGHT OR SPLIT FACED STONE. THEY WILL BE REJECTED. PROVIDE JPEG PHOTO OF STONE TO LANDSCAPE ARCHITECT FOR APPROVAL. BOULDERS TO BE EMBEDDED INTO GRADE DO NOT REST ON SURFACE.
SIZES: A: 3'-6" TO 4'-6" DIAMETER
B: 2'-0" TO 3'-6" DIAMETER
C: 1'-0" TO 2'-0" DIAMETER (REFER TO THE KEYS SHOWN ON LANDSCAPE PLAN)
- PAVING TYPES AND MATERIALS AS FOLLOWS:
- OFF SITE SIDEWALKS, CAST IN PLACE CONCRETE W/BROOM FINISH, INSTALL SAW CUT CONTROL JOINT EVERY 8'. ISOLATION JOINT EVERY 28'.
- DRIVEWAY ENTRANCE: PERMEABLE UNIT PAVERS AND STANDARD CONCRETE PAVING WITH BROOM FINISH NO TROWELED EDGES.
- ON SITE, COURTYARDS AND PRIVATE PATIOS: 2'X2' COMPOSITE OR IPE WOOD PAVER SYSTEM, PERMEABLE PAVING. INSTALL OVER 3" LAYER OF 1/2" WASHED CLEAR CRUSH BASE COURSE.
- BENCHES: MAGLIN - 870 SERIES BACKED BENCH - LEGACY #ML B870 - 69.5" LONG, IPE WOOD. ALL METAL COMPONENTS TO BE POWDER COATED WITH STANDARD COLOR GUN METAL. C/W PERMANENT ANCHOR SYSTEM.
- SITE GRADING: REFER TO ARCHITECTURAL AND CIVIL ENGINEERING DWGS FOR SITE GRADING OF ROADS, AND RETAINING WALLS. AREA DRAINS AND SUB-SURFACE PIPING TO BE COORDINATED WITH CIVIL GRADING FOR ALL LANDSCAPED AREAS TO ENSURE POSITIVE DRAINAGE. NO PONDING OF STORM WATER ALLOWED ON SITE.
- STORM WATER MANAGEMENT BY CIVIL ENGINEERING.

PLANT LIST:

| KEY | QTY. | BOTANICAL NAME | COMMON NAME | SIZE | COND. |
|-----|------|---|---------------------------|------------|-----------|
| ACD | 6 | ACER CIRINATUM | VINE MAPLE | 2.75M HT. | B & B |
| APD | 7 | ACER PALMATUM | JAPANESE MAPLE | 2.75M HT. | B & B |
| FOD | 2 | FRAXINUS OXYCARPA RAYWOOD | BOYWOOD REDMAPLE | 6 CM CAL. | B & B |
| HCD | 4 | HIBISCUS COELESTIS | SHRUBBY ALTHEA | 2.5 M HT. | B & B |
| POC | 2 | PICEA OMORICA | SERBIAN SPRUCE | 2.75 M HT. | B & B |
| LSD | 2 | LIQUIDAMBAR STYRASIFLUA | AMERICAN SWEETGUM | 6 CM CAL. | B & B |
| QRD | 4 | QUERCUS RUBRA | RED OAK | 6 CM CAL. | B & B |
| TOC | 35 | THUJA OCCIDENTALIS SMARAGD | EMERALD GREEN CEDAR | 1.75 M HT. | B & B |
| CT | 2 | CHOISYA TERNATA | MEXICAN MOCK ORANGE | #3 | CONTAINER |
| HM | 4 | HEUCHERA MICRA. VAR. DIV. 'PALACE PURPLE' | CORAL BELLS | #1 | CONTAINER |
| HU | 16 | HOSTA UNDULATA MEDIO-VAR. | HOSTA UNDULATA MEDIO-VAR. | #1 | CONTAINER |
| JC | 13 | JUNIPERUS CHINENSIS MINT JULEP | SEAGREEN JUNIPER | #3 | CONTAINER |
| LP | 4 | LONICERA PILEATA | PRIVET HONEYSUCKLE | #3 | CONTAINER |
| MA | 55 | MAHONIA AQUIFOLIUM | OREGON GRAPE | #3 | CONTAINER |
| LA | 91 | LAVANDULA ANGUSTIFOLIA | ENGLISH LAVENDER | #1 | CONTAINER |
| PO | 39 | PRUNUS L. OTTO LUYKENS | OTTO LUYKEN LAUREL | #3 | CONTAINER |
| PM | 59 | POLYSTICHUM MUNITEM | WESTERN SWORD FERN | #3 | CONTAINER |
| RC | 4 | RHODODENDRON CHEER | CHEER RHODO. | #3 | CONTAINER |
| RD | 9 | RHODODENDRON DORA AMETEIS | DORA AMETEIS RHODO. | #3 | CONTAINER |
| RH | 24 | RHODODENDRON HACHIMANN'S FANTASTICA | FANTASTIC RHODODENDRON | #3 | CONTAINER |
| RU | 10 | RHODODENDRON UNIQUE | UNIQUE RHODO. | #3 | CONTAINER |
| SJ | 6 | SKIMMIA JAPONICA REEVESIANA | JAPANESE SKIMMIA | #3 | CONTAINER |
| VD | 8 | VIBURNUM DAVIDII | DAVID'S VIBURNUM | #3 | CONTAINER |
| AC | 26 | ASTILBE CHINENSIS 'VISIONS' | ASTILBE | #1 | CONTAINER |
| CZ | 62 | COREOPSIS VERTICILLATA ZAGREB | ZAGREB TICKSEED | #1 | CONTAINER |
| EC | 49 | ECHINACEA PURPUREA 'MAGNUS' | MAGNUS CONEFLOWER | #1 | CONTAINER |
| HS | 47 | HEMEROCALLIS STELLA D'ORO | DAY LILY | #1 | CONTAINER |
| RF | 12 | RUDBECKIA FULGIDA var 'GOLDSTRUM' | BLACK EYED SUSAN | #1 | CONTAINER |
| WI | 4 | WISTERIA FLORIBUNDA | JAPANESE WISTERIA VINE | #3 | CONTAINER |
| LN | 17 | LYSIMACHIA NUMMULARIA | CREeping JENNY | 10CM POT | CONTAINER |

KEY:

- | | |
|--------------------------------|---|
| 1 LAWN - OPEN SPACE | 10 6' HT. WOOD FENCE/SCREEN |
| 2 PLANTING BED | 11 2' X 2' MOSO WOOD PAVING BAMBOO X-TREME |
| 3 PROPOSED DECIDUOUS TREE | 12 2' X 2' CONCRETE UNIT PAVERS W/PEDESTALS |
| 4 PROPOSED CONIFEROUS TREE | 13 GRANULAR WALKWAY 3" DIA. CRUSHED GRANITE 1/4" DIA. |
| 5 DECORATIVE RIVER ROCK BED | 14 METAL PLANTER ALUM. OR GALVANIZED STEEL |
| 6 CONCRETE PAVING BROOM FINISH | 15 DECORATIVE SQ. POT |
| 7 ROCK/BOULDER BARRIER | 16 BENCH |
| 8 RAISED CONC. PLANTER WALL | 17 BARK MULCH BELOW TREE |
| 9 UNIT PAVERS - PERMEABLE | 19 DECORATIVE STONE WALL |

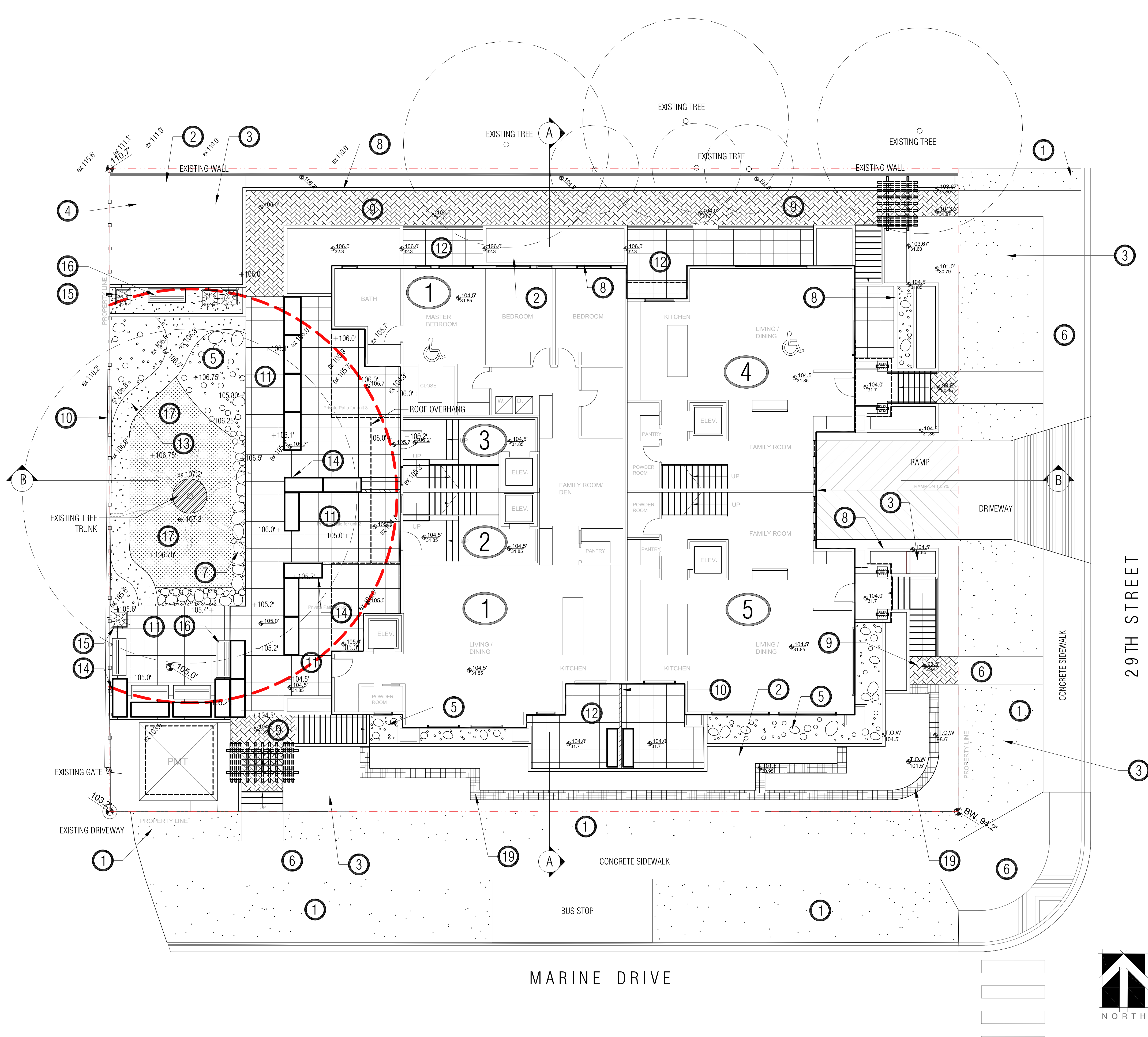
REVISIONS/ISSUED
1. AUG. 24/2023 - CONSULTANT REVIEW.
2. OCT. 10/2023 - REISSUED FOR REVISION.
3. JAN. 22/2024 - REVISED PER REVISIONS (P/14/24) AND DWG.

DEVELOPER: GOLDEN LINE HOMES
ARCHITECT: F. ADAR ARCHITECTS INC.
ROD MARUYAMA & ASSOCIATES: 689 C. LEGS IN BOOT SQUARE, VANCOUVER, B.C. V6Z 2B4. PH: (604) 674-9887 FX: (604) 674-9831 EM: mrodmar@rodmar.com

PROJECT
MULTI UNIT RESIDENTIAL DEVELOPMENT
2905 MARINE DRIVE, WEST VANCOUVER, B.C.

DATE NOV. 28, 2023
DESIGN JZ, RMM
DRAWN RMM
CHECKED RMM
SCALE AS SHOWN
JOB NO. M1903

SHEET TITLE
LANDSCAPE PLAN
LEVEL 1
SHEET NO. L-1



- KEY:**
- ① LAWN - OPEN SPACE
 - ② PLANTING BED
 - ③ PROPOSED DECIDUOUS TREE
 - ④ PROPOSED CONIFEROUS TREE
 - ⑤ DECORATIVE RIVER ROCK BED
 - ⑥ CONCRETE PAVING BROOM FINISH
 - ⑦ ROCK/BOULDER BARRIER
 - ⑧ RAISED CONC. PLANTER WALL
 - ⑨ UNIT PAVERS - PERMEABLE
 - ⑩ 6' HT. WOOD FENCE/SCREEN
 - ⑪ 2' X 2' MOSO WOOD PAVING BAMBOO X-TREME
 - ⑫ 2' X 2' CONCRETE UNIT PAVERS W/PEDESTALS
 - ⑬ GRANULAR WALKWAY 3' W. CRUSHED GRANITE 1/4" DIA.
 - ⑭ METAL PLANTER ALUM. OR GALVANIZED STEEL
 - ⑮ DECORATIVE SQ. POT
 - ⑯ BENCH
 - ⑰ BARK MULCH BELOW TREE
 - ⑱ DECORATIVE STONE WALL

1 GENERAL LANDSCAPE SITE PLAN
SCALE: 1/8" = 1'-0"

REVISIONS/ISSUED
 1. AUG. 24/2021 - CONSULTANT REVIEW.
 2. OCT. 10/2021 - REVISIONS FOR REZONING.
 3. JAN. 25/2022 - REVISED FOR REZONING (APP. APPROVAL AND DRY)

PROJECT
MULTI UNIT RESIDENTIAL DEVELOPMENT
 2905 MARINE DRIVE, WEST VANCOUVER, B.C.
 DEVELOPER: GOLDEN LINE HOMES
 ARCHITECT: F. ADAB ARCHITECTS INC.
 LANDSCAPE ARCHITECT: MARUYAMA & ASSOCIATES: 689 C. LEGS IN FOOT SQUARE, VANCOUVER, B.C. V6Z 2B4. PH: (604) 974-9887 FX: (604) 974-9831 EM: maruyama@mla.us.net



DATE NOV. 28, 2020
DESIGN JZ, RMM
DRAWN RMM
CHECKED RMM
SCALE AS SHOWN
JOB NO. M1903

SHEET TITLE
 GENERAL LANDSCAPE
 LEVEL 1
SHEET NO.
 L-2

NOTES:

- ALL PLANT MATERIAL SHALL MEET OR EXCEED STANDARDS REQUIRED BY BCNTA OR BCSLA GUIDELINES.
- REFER TO ARBORIST REPORT AND DRAWINGS PREPARED BY ACER TREE SERVICES FOR ALL RELATED TREE REMOVAL AND TREE RETENTION REQUIREMENTS.
- TOPSOIL SUPPLIED SHALL BE FROM A REPUTABLE SOURCE. A FULL ANALYSIS OF THE TOPSOIL WILL BE REQUIRED AT THE CONTRACTOR'S EXPENSE. SUBMIT TO LANDSCAPE CONSULTANT FOR APPROVAL.
- AMMEND TOPSOIL PER SOIL ANALYSIS RECOMMENDATIONS PRIOR TO SPREADING ON SITE. REJECTED TOPSOIL SHALL BE REMOVED OFF SITE IMMEDIATELY AT THE LANDSCAPE CONTRACTORS EXPENSE.
- TOPSOIL DEPTHS FOR PLANTING AS FOLLOWS:
 - GRASSED AREAS: 450MM
 - GROUND COVERS: 450MM
 - SHRUBS: 450MM
 - TREE PITS: 100U METERS PER TREE PIT - ALSO SEE LANDSCAPE DRAWING L-8 (SOIL VOLUMES)
- LAWN AREAS SHALL BE SODDED WITH #1 PREMIUM RESIDENTIAL SOD, NON NETTED.
- ALL SHRUB PLANTING AREAS SHALL HAVE GROUND COVERS 14" O.C.
- 2" DEPTH OF 1"MINUS COMPOST MULCH TO BE INSTALLED IN ALL SHRUB PLANTING AREAS.
- IRRIGATION SYSTEM - (AUTOMATIC) SHALL BE DESIGN BUILT TO BE COORDINATED BY GENERAL CONTRACTOR.
- ROCK AND BOULDER MATERIALS

ALL BOULDERS SHALL BE SMOOTH FINISH SOURCED FROM RIVER OR FIELD. DO NOT SUPPLY STRAIGHT OR SPLIT FACED STONE. THEY WILL BE REJECTED. PROVIDE JPEG PHOTO OF STONE TO LANDSCAPE ARCHITECT FOR APPROVAL. BOULDERS TO BE EMBEDDED INTO GRADE DO NOT REST ON SURFACE.

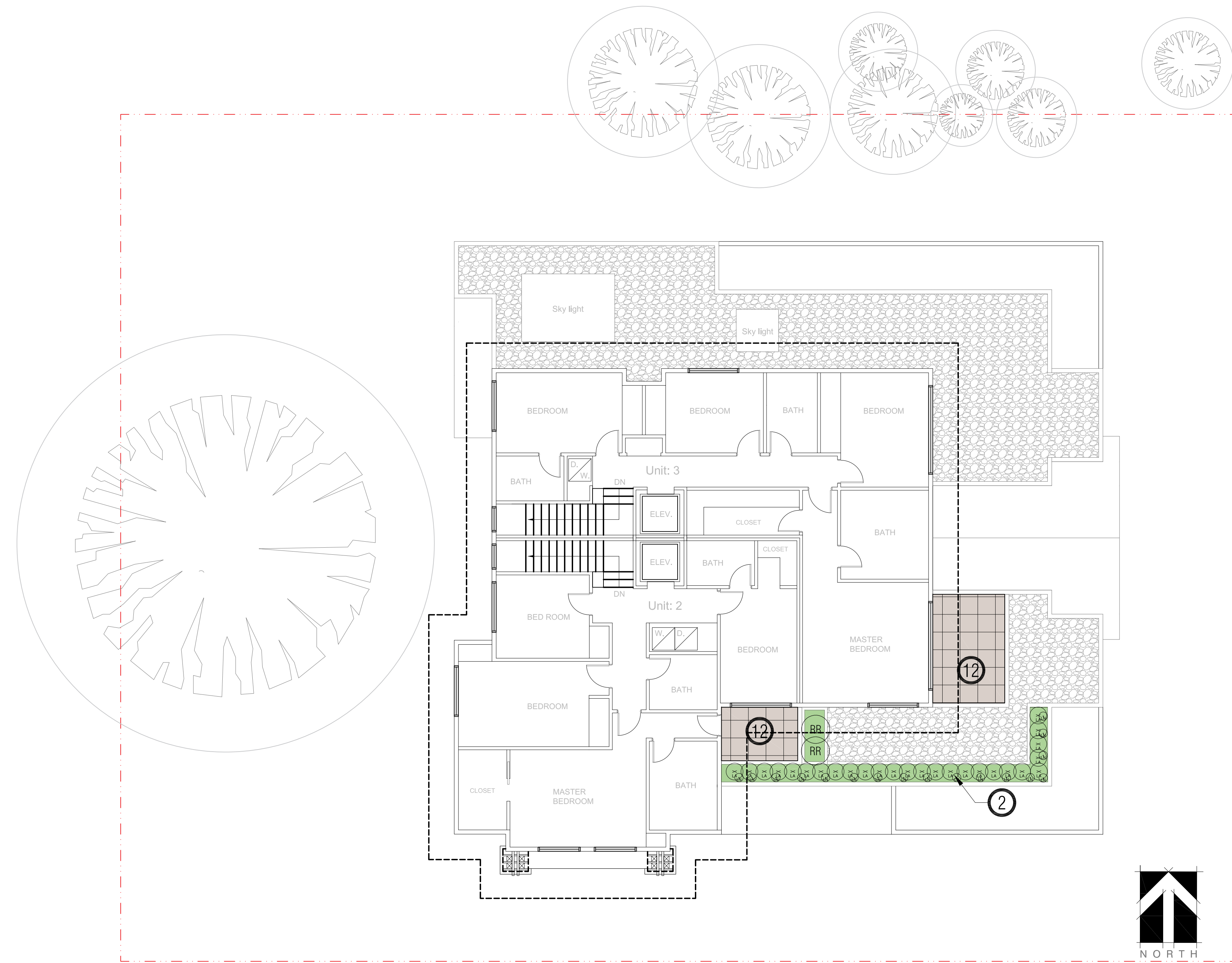
SIZES: A: 3'-6" TO 4'-6" DIAMETER
 B: 2'-0" TO 3'-6" DIAMETER
 C: 1'-0" TO 2'-0" DIAMETER (REFER TO THE KEYS SHOWN ON LANDSCAPE PLAN)
- PAVING TYPES AND MATERIALS AS FOLLOWS:
 - OFF SITE SIDEWALKS. CAST IN PLACE CONCRETE W/BROOM FINISH. INSTALL SAW CUT CONTROL JOINT EVERY 8'. ISOLATION JOINT EVERY 28'.
 - DRIVEWAY ENTRANCE: PERMEABLE UNIT PAVERS AND STANDARD CONCRETE PAVING WITH BROOM FINISH NO TROWELED EDGES.
 - ON SITE, COURTYARDS AND PRIVATE PATIOS: 2'X2' COMPOSITE OR IPE WOOD PAVER SYSTEM, PERMEABLE PAVING. INSTALL OVER 3" LAYER OF 1/2" WASHED CLEAR CRUSH BASE COURSE.
- BENCHES: MAGLIN - 870 SERIES BACKED BENCH - LEGACY #ML B870 - 69.5" LONG, IPE WOOD. ALL METAL COMPONENTS TO BE POWDER COATED WITH STANDARD COLOR GUN METAL. C/W PERMANENT ANCHOR SYSTEM.
- SITE GRADING: REFER TO ARCHITECTURAL AND CIVIL ENGINEERING DWGS FOR SITE GRADING OF ROADS, AND RETAINING WALLS. AREA DRAINS AND SUB-SURFACE PIPING TO BE COORDINATED WITH CIVIL GRADING FOR ALL LANDSCAPED AREAS TO ENSURE POSITIVE DRAINAGE. NO PONDING OF STORM WATER ALLOWED ON SITE.
- STORM WATER MANAGEMENT BY CIVIL ENGINEERING.

PLANT LIST:

| KEY | QTY. | BOTANICAL NAME | COMMON NAME | SIZE | COND. |
|-----|------|---|--------------------------|------------|-----------|
| ACD | 6 | ACER CIRINATUM | VINE MAPLE | 2.75M HT. | B & B |
| APD | 7 | ACER PALMATUM | JAPANESE MAPLE | 2.75M HT. | B & B |
| FOD | 2 | FRAXINUS OXYCARPA RAYWOOD | BOYWOOD REDMAPLE | 6 CM CAL. | B & B |
| HCD | 4 | HIBISCUS COELESTIS | SHRUBBY ALTHEA | 2.5 M HT. | B & B |
| POC | 2 | PICEA OMORIKA | SERBIAN SPRUCE | 2.75 M HT. | B & B |
| LSD | 2 | LIQUIDAMBAR STYRACIFLUA | AMERICAN SWEETGUM | 6 CM CAL. | B & B |
| QRD | 4 | QUERCUS RUBRA | RED OAK | 6 CM CAL. | B & B |
| TOC | 35 | THUJA OCCIDENTALIS SMARAGD | EMERALD GREEN CEDAR | 1.75 M HT. | B & B |
| CT | 2 | CHOISYA TERNATA | MEXICAN MOCK ORANGE | #3 | CONTAINER |
| HM | 4 | HEUCHERA MICRA. VAR. DIV. 'PALACE PURPLE' | CORAL BELLS | #1 | CONTAINER |
| HU | 16 | HOSTA UNULATA MEDIO-VAR. | HOSTA UNULATA MEDIO-VAR. | #1 | CONTAINER |
| JC | 13 | JUNIPERUS CHINENSIS MINT JULEP | SEAGREEN JUNIPER | #3 | CONTAINER |
| LP | 4 | LONICERA PILEATA | PRIVET HONEYSUCKLE | #3 | CONTAINER |
| MA | 55 | MAHONIA AQUIFOLIUM | OREGON GRAPE | #3 | CONTAINER |
| LA | 91 | LAVANDULA ANGUSTIFOLIA | ENGLISH LAVENDER | #1 | CONTAINER |
| PO | 39 | PRUNUS L. OTTO LUYKENS | OTTO LUYKEN LAUREL | #1 | CONTAINER |
| PM | 59 | POLYSTICHUM MUNITEM | WESTERN SWOOD FERN | #3 | CONTAINER |
| RC | 4 | RHODODENDRON CHEER | CHEER RHODO. | #3 | CONTAINER |
| RD | 9 | RHODODENDRON DORA AMETEIS | DORA AMETEIS RHODO. | #3 | CONTAINER |
| RH | 24 | RHODODENDRON HACHIMANN'S FANTASTICA | FANTASTIC RHODODENDRON | #3 | CONTAINER |
| RU | 10 | RHODODENDRON UNIQUE | UNIQUE RHODO. | #3 | CONTAINER |
| SJ | 6 | SKIMMIA JAPONICA REEVESIANA | JAPANESE SKIMMIA | #3 | CONTAINER |
| VD | 8 | VIBURNUM DAVIDII | DAVID'S VIBURNUM | #3 | CONTAINER |
| AC | 26 | ASTILBE CHINENSIS 'VISIONS' | ASTILBE | #1 | CONTAINER |
| CZ | 62 | COREOPSIS VERTICILLATA ZAGREB | ZAGREB TICKSEED | #1 | CONTAINER |
| EC | 49 | ECHINACEA PURPUREA 'MAGNUS' | MAGNUS CONEFLOWER | #1 | CONTAINER |
| HS | 47 | HEMEROCALIS STELLA D'ORO | DAY LILY | #1 | CONTAINER |
| RF | 12 | RUDBECKIA FULGIDA var 'GOLDSTRUM' | BLACK EYED SUSAN | #1 | CONTAINER |
| WI | 4 | WISTERIA FLORIBUNDA | JAPANESE WISTERIA VINE | #3 | CONTAINER |
| LN | 17 | LYSIMACHIA NUMMULARIA | CREeping JENNY | 10CM POT | CONTAINER |

KEY:

- | | |
|--------------------------------|--|
| ① LAWN - OPEN SPACE | ⑩ 6' HT. WOOD FENCE/SCREEN |
| ② PLANTING BED | ⑪ 2' X 2' MOSO WOOD PAVING BAMBOO X-TREME |
| ③ PROPOSED DECIDUOUS TREE | ⑫ 2' X 2' CONCRETE UNIT PAVERS W/PEDESTALS |
| ④ PROPOSED CONIFEROUS TREE | ⑬ GRANULAR WALKWAY 3" W. CRUSHED GRANITE 1/4" DIA. |
| ⑤ DECORATIVE RIVER ROCK BED | ⑭ METAL PLANTER ALUM. OR GALVANIZED STEEL |
| ⑥ CONCRETE PAVING BROOM FINISH | ⑮ DECORATIVE SQ. POT |
| ⑦ ROCK/BOULDER BARRIER | ⑯ BENCH |
| ⑧ RAISED CONC. PLANTER WALL | ⑰ BARK MULCH BELOW TREE |
| ⑨ UNIT PAVERS - PERMEABLE | ⑱ DECORATIVE STONE WALL |



1 THIRD FLOOR - LANDSCAPE
 SCALE: 1/8" = 1'-0"

REVISIONS/ISSUED
 1. AUG. 24/2021 - CONSULTANT REVIEW
 2. OCT. 10/2021 - REISSUED FOR REZONING
 3. JAN. 25/2024 - REVISED FOR REZONING APPROVAL AND DMY

DESIGNED BY: MARUYAMA LANDSCAPE ARCHITECTS INC. 1010 WEST 10TH AVENUE, SUITE 100, VANCOUVER, BC V6H 1T6, CANADA
 TEL: 604-681-1111 FAX: 604-681-1112
 WWW.MARUYAMA.LA ARCHITECTS INC. 1010 WEST 10TH AVENUE, SUITE 100, VANCOUVER, BC V6H 1T6, CANADA

DEVELOPER: GOLDEN LINE HOMES
 ARCHITECT: F. ADAR ARCHITECTS INC.
 6897 C. LEGS IN FOOT SQUARE, VANCOUVER, B.C. V6Z 2B4. PH: (604) 974-9987 FX: (604) 974-9981 EM: mresyama@mla.us.net

PROJECT
MULTI UNIT RESIDENTIAL DEVELOPMENT
 2905 MARINE DRIVE, WEST VANCOUVER, B.C.

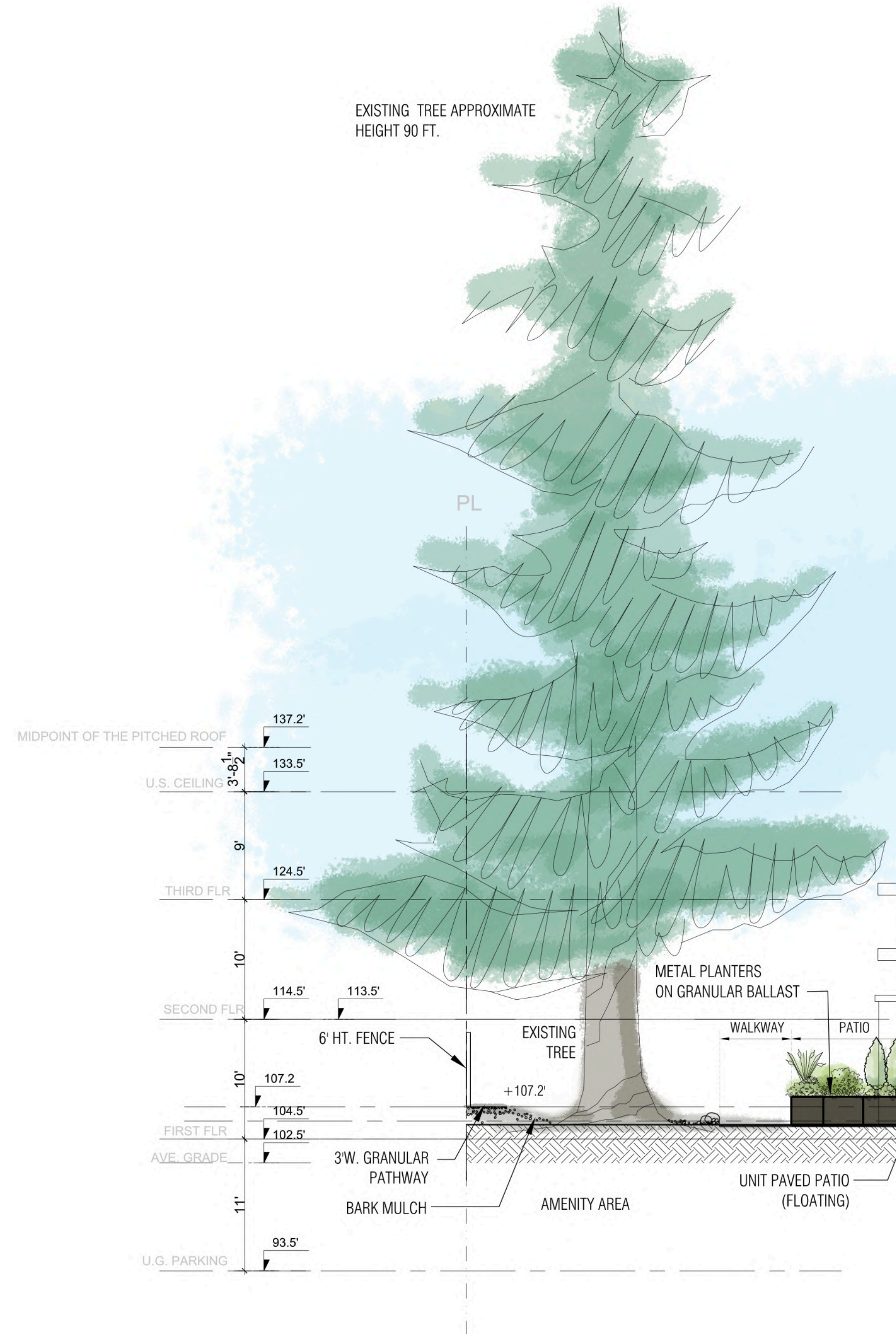


DATE NOV. 28, 2020
 DESIGN JZ, RMM
 DRAWN RMM
 CHECKED RMM
 SCALE AS SHOWN
 JOB NO. M1903

SHEET TITLE
LANDSCAPE PLAN
LEVEL 3
 SHEET NO. **L-3**



1 SECTION A-A
SCALE: 1/8" = 1'-0"



2 SECTION - BB WEST SIDE THROUGH TREE #18
SCALE: 1/8" = 1'-0"

REVISIONS/ISSUED
1. AUG. 24/2023 - CONSULTANT REVIEW
2. OCT. 10/2023 - REISSUED FOR REZONING
3. JAN. 23/2024 - REVISED FOR REZONING (APP. FOR ADJ AND DNV)

PROJECT
MULTI UNIT RESIDENTIAL DEVELOPMENT
2905 MARINE DRIVE, WEST VANCOUVER, B.C.
DEVELOPER: GOLDEN LINE HOMES
ARCHITECT: F. ADAB ARCHITECTS INC.
RCD: MARUYAMA & ASSOCIATES: 660 C. LEGS IN FOOT SQUARE, VANCOUVER, B.C. V6Z 2B4. PH: (604) 974-9987. FX: (604) 974-9931. EM: maruyama@mla.us.net



DATE: NOV. 28, 2023
DESIGN: JZ, RMM
DRAWN: RMM
CHECKED: RMM
SCALE: AS SHOWN
JOB NO.: M1903

SHEET TITLE
LANDSCAPE SECTIONS
SHEET NO.
L-4