

Pickleball Update

Jill Lawlor, Senior Manager of Parks

March 10, 2025 Regular Council Meeting

Pickleball Advisory Roundtable

- The Pickleball Advisory Roundtable (Roundtable) consists of representatives from West Van Players, the North Shore Pickleball Club, and other community pickleball players with a diverse expertise in sport, recreation, and mediation.
- The Roundtable was established to support staff in efficiently addressing the needs of pickleball, fostering collaboration, and streamlining community-focused solutions.
- At the January 16, 2025 Roundtable meeting, there was a recommendation to construct pickleball courts west of the Gleneagles Community Centre (GECC).

Gleneagles Location

- The Roundtable voted 4:1 in favor of building pickleball courts west of the GECC on the existing Bike Terrain Park as the priority over additional courts at Ambleside Park until the completion of the Ambleside Park Master Plan.
- While exploring alternatives for the Bike Terrain Park, staff reviewed the entire site and considered options that could optimize the whole Adventure Park site with multigenerational activity.

Gleneagles Adventure Park

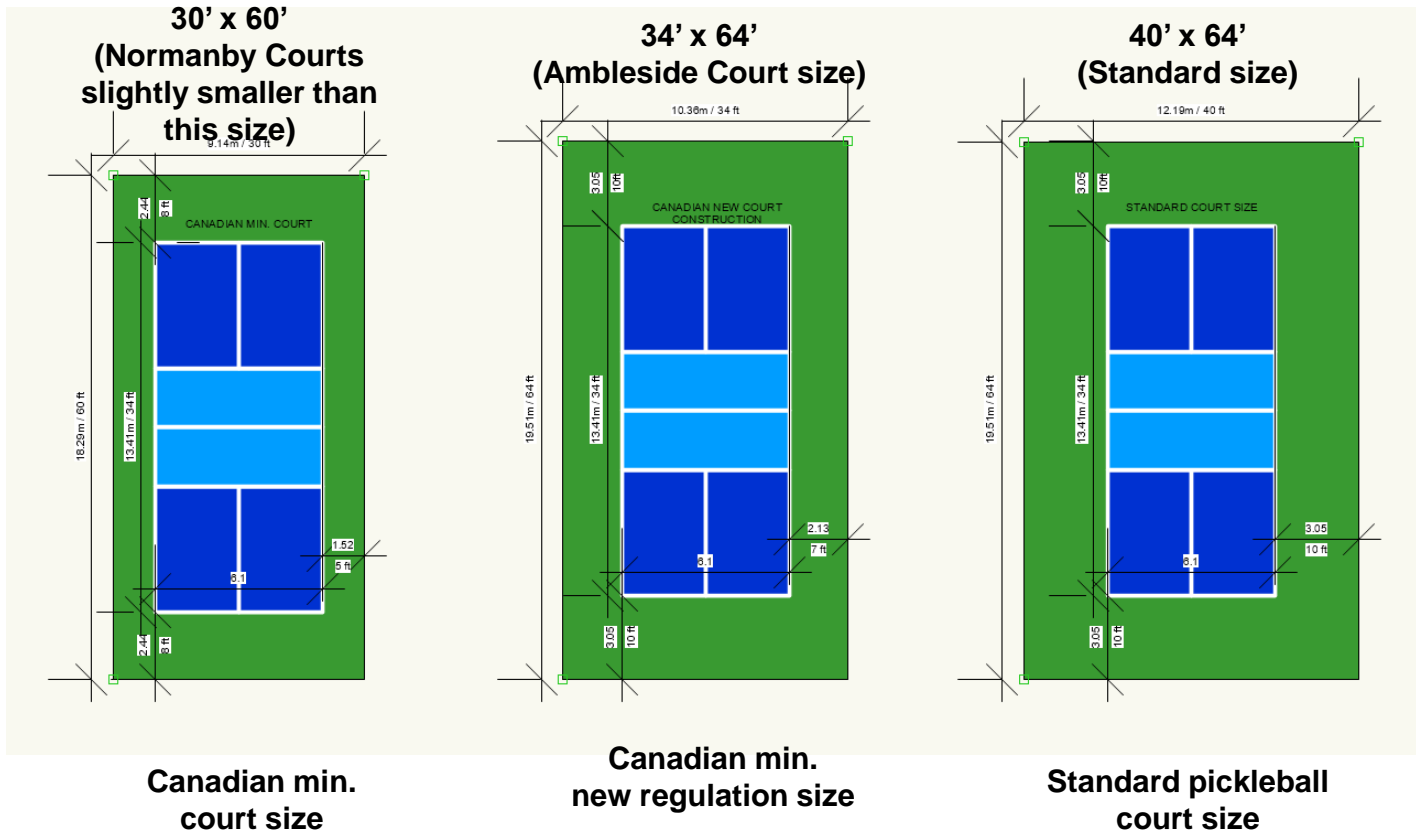


Existing Gleneagles Adventure Park

- In 2005, the Bike Terrain Park and Skateboard Bowl were built for youth in the western area of the District.
- Neither amenity has attracted consistent popular use.
- Dirt terrain parks struggle with erosion, weeds, and are limited to BMX or mountain bike style of riding.
- The Skateboard Bowl has steep sides and entry and is attractive to more advanced riders, limiting its usage.

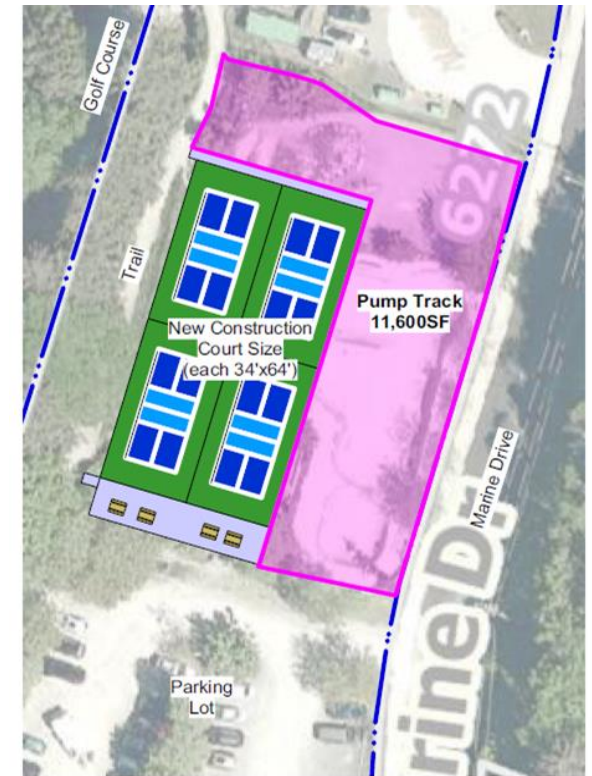


Pickleball Court Sizes



Gleneagles 4 Pickleball Courts and Pump Track Proposal

- Construct four new regulation size pickleball courts.
- Replace the existing Bike Terrain Park and Skateboard Bowl with a paved pump track designed for all abilities – accommodating bikes, scooters, rollerblades, and skateboards.



1 East Court North South Orientation
Scale: 1:500

Pump Track

- A paved pump track provides an inclusive, multi-use recreational space for bikes, scooters, skateboards, and rollerblades, making it accessible for all ages and skill levels.
- It promotes active outdoor play, skill development, and community engagement, while offering a low-maintenance, long-lasting alternative to traditional skateparks.



Proposed Pickleball Plan

2025

- Upon Council approval, build outdoor pickleball courts west of the Gleneagles Community Centre
- Conduct a lighting study at both Ambleside Park pickleball & tennis courts
- Complete an Ambleside Park Master Plan and explore the feasibility of additional courts
- Pilot the implementation of bookable community play, court bookings, and priority registration

2026

- Install sport court lighting at Ambleside Park pickleball & tennis courts pending budget approval
- Pending outcome of Ambleside Park Master Plan, submit a funding request to support pickleball

Future

- Explore the feasibility of pickleball courts at Cypress Village

Recommendation

THAT

1. the expenditure of up to \$28,000 from existing unspent sport court capital be approved to complete:
 - a. a topographic survey,
 - b. detailed design, and
 - c. Class C cost estimate (an estimate for the total project cost and phased implementation cost estimate)

to construct four regulation size outdoor pickleball courts and a new paved pump track designed for all abilities, accommodating bikes, scooters, and skateboards, west of the Gleneagles Community Centre on the site that is currently the Gleneagles Adventure Park;

2. staff confirm available funding sources for the proposed project;
3. staff communicate with the western community and stakeholders about potential uses for the existing Gleneagles Adventure Park, including retaining it as is or repurposing it for pickleball courts and a paved pump track; and
4. staff report back to Council in early May 2025.

Thank You!
Questions?