

# 2024 COLLECTION

## GARBAGE, GREEN CAN, AND YARD TRIMMINGS GUIDE

### Questions?

Contact us Monday-Friday,  
8:30 a.m.-4:30 p.m.

Please report missed collections  
by 11 a.m. the following day.

### Garbage and organics collection:

604-925-7176

[westvancouver.ca/collection](http://westvancouver.ca/collection)

### Recycling collection

provided by Recycle BC:

778-589-3223

[recyclebc.ca/west-vancouver](http://recyclebc.ca/west-vancouver)



### DOWNLOAD THE WESTVANCOLLECT APP

Receive instant service change alerts, collection  
reminders, and personalized collection calendars.



# RECYCLING

set out between 5-7:30 a.m.

COLLECTED  
WEEKLY

by Recycle BC



## IMPORTANT

Recycle BC will mail a separate annual recycling guide in June. Please keep both collection guides.

Recycling collection in West Vancouver is provided by Waste Control Services on behalf of Recycle BC.

Contact Waste Control Services directly to report missed recycling collection and to request delivery of replacement boxes or bags:

778-589-3223 | [recyclebcwvan@wastecontrolservices.com](mailto:recyclebcwvan@wastecontrolservices.com)

For more information, including a list of accepted materials, visit [recyclebc.ca/west-vancouver](http://recyclebc.ca/west-vancouver) or check Recycle BC's annual guide.



RECYCLEBC

## The circular economy & you



### What is a circular economy?

Our behaviours play a pivotal role in shaping a circular economy. When we opt for products manufactured for longevity, consume responsibly, and engage in reuse and recycling, we contribute to the sustainability of resources and reduced waste.

### We have a new parks recycling system!



Find out more at [westvancouver.ca/parks-recycling](http://westvancouver.ca/parks-recycling).

## Missed collection?

Was your garbage, green can, or recycling not collected? There are many reasons why your material may not be collected:

- material did not meet our set-out instructions and/or limits
- roadwork, construction, or parked vehicles blocked access
- collection may be delayed during periods of snow and ice

If none of these apply, call 604-925-7176 to report missed collection by 11 a.m. the next day.

For the most recent updates on collection delays and set out instructions, download the WestVanCollect app at [westvancouver.ca/collection](http://westvancouver.ca/collection).



SCAN TO DOWNLOAD

# GREEN CAN & YARD TRIMMINGS

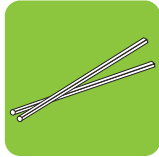
set out between 5-7:30 a.m.

COLLECTED  
WEEKLY

## Green can



meat, bones  
& fish



wooden stir sticks  
& chopsticks



grains  
& pasta



fruit &  
vegetables



dairy products,  
eggs & shells



plate scrapings



food-soiled paper  
& cardboard



coffee filters  
& tea bags



## Yard trimmings



grass  
clippings



leaves



flowers



pumpkins



## What stays out



NO PLASTIC  
not even compostable  
or biodegradable



no diapers or  
baby wipes



no pet waste  
or kitty litter



no dirt, rocks,  
or sod\*



\* Dirt, rocks  
& sod cannot  
be collected  
curbside.

## Set-out instructions

- place food scraps and food-soiled paper in a 46-litre container (e.g. Orbis NPL 280A) clearly labelled as a Green Can
- place grass clippings, leaves, small trimmings, plants, and flowers in a lidded 77-litre can with a yard trimmings decal—kraft paper bags are also accepted
- limit of six yard trimmings cans, bags, or bundles, including Green Can
- bundle twigs and branches with biodegradable string or twine (no wire, nylon rope, or plastic strapping) and place beside, not inside, cans
  - maximum bundle size: one metre long and 30 centimetres in diameter
  - maximum branch thickness: 7.5 centimetres
- maximum weight per can, bag, or bundle: 20 kilograms

Visit [westvancouver.ca/collection](http://westvancouver.ca/collection) for a complete list of accepted materials.

## Need a new decal?

Replacement decals are free.

Email [westvancollect@westvancouver.ca](mailto:westvancollect@westvancouver.ca) and provide your address and the number of decals you require or pick up at West Vancouver Municipal Hall, 750 17th Street.

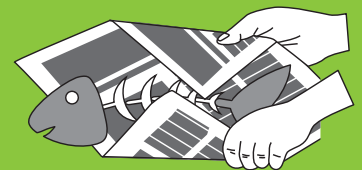
## Dumping is not allowed

Dumping yard trimmings and food scraps in parks and utility corridors is illegal. It can spread invasive plants, restrict access to utilities, increase fire hazard, and is costly to clean up.

Dispose of yard trimmings through curbside collection, backyard composting, or by taking them to a designated drop-off depot. Learn more at [westvancouver.ca/collection](http://westvancouver.ca/collection).

## Wrap your scraps in newsprint for a cleaner can

Plastic bags, even those labeled compostable or bio-degradable, are not accepted.



## Noxious weeds like knotweed and giant hogweed need special care.

For proper disposal of invasive plants visit [westvancouver.ca/invasiveplants](http://westvancouver.ca/invasiveplants) or call 604-925-7275.

# GARBAGE

set out between 5-7:30 a.m.

COLLECTED  
EVERY  
OTHER  
WEEK

## Set-out instructions

Garbage bags must be placed at the curb in lidded cans.

- limit of **two** 77-litre garbage bags in cans no larger than 121 litres
- maximum weight is 20 kilograms per can or bag



## Have more garbage?

Double check that you've sorted all materials into recycling, Green Can, and depot drop-off.

If you still have garbage, tags for additional 77-litre bags can be purchased for \$6 at Municipal Hall, and West Vancouver and Gleneagles community centres.



## The following items are not accepted in your curbside garbage



yard trimmings



food scraps



recyclables



oversized items



construction material



batteries



electronics



tires



medications



paint



small appliances



used oil & antifreeze



pesticides



explosives



dirt, rocks & sod

## Coexisting with wildlife

Prevent wildlife encounters by responsibly managing garbage, food scraps, and other attractants. Feeding bears, even unintentionally, is against the law.

### How to responsibly manage your garbage and food scraps:

1. store all materials inside the house, shed, or secure enclosure until the morning of collection
2. wash your Green Can with mild soap or vinegar and water solution to reduce odours
3. wrap your food scraps in newspaper or paper bags to minimize odours and mess
4. freeze plate scrapings and food scraps until collection day

### Please report bear attractants to:

Bylaw & Licensing Services: 604-925-7152

### More information about bears:

North Shore Black Bear Society: 604-990-BEAR  
[westvancouver.ca/bears](http://westvancouver.ca/bears)



# DESIGNATED DROP-OFF DEPOTS

for oversized recyclables and items *not* accepted at curbside

## Did you know?

- there is *no charge* to drop off the recyclables listed here
- all materials must be clean and sorted
- staff reserve the right to refuse any materials

## North Shore Recycling and Waste Centre

The North Shore Recycling and Waste Centre provides one-stop service for recycling, yard trimmings, and waste disposal.

The designated recycling area accepts large loads of curbside recycling and recyclable materials that aren't accepted at the curb. Look for the designated recycling area beside the main transfer station entrance.

*Residents can also drop off gypsum/drywall, mattresses, food scraps (100 litres or less), and green waste for recycling at the North Shore Recycling and Waste Centre. Charges apply for these items. For more information visit [metrovancover.org](http://metrovancover.org) and search for "North Shore Recycling and Waste Centre."*

### LOCATION

30 Riverside Drive West,  
North Vancouver

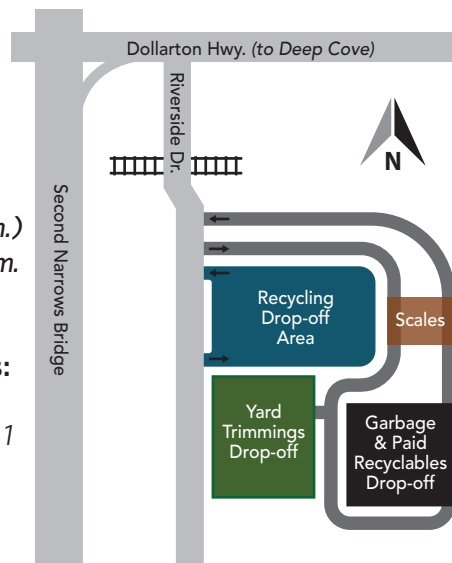
### HOURS

**Weekdays:** 5:30 a.m.–6 p.m.  
(recycling drop-off opens at 7 a.m.)  
*Peak hours: weekdays 10 a.m.–2 p.m.*

**Saturdays:** 8 a.m.–6 p.m.

**Sundays & statutory holidays:**  
9 a.m.–5 p.m.  
*Closed December 25 & January 1*

For more information,  
call 604-681-5600 or  
visit [metrovancover.org](http://metrovancover.org).



## Accepted materials (no charge)



plastic foam packaging



plastic bags & overwrap



flexible packaging & net bags



corrugated cardboard



cooking oil



beverage containers



scrap metal



electronics & cell phones



clothing & books



lamps & light fixtures



smoke alarms & thermostats



car & household batteries



large appliances



paint & pesticides



propane tanks



curbside recyclables



used oil, solvents, antifreeze & flammables



small appliances & power tools

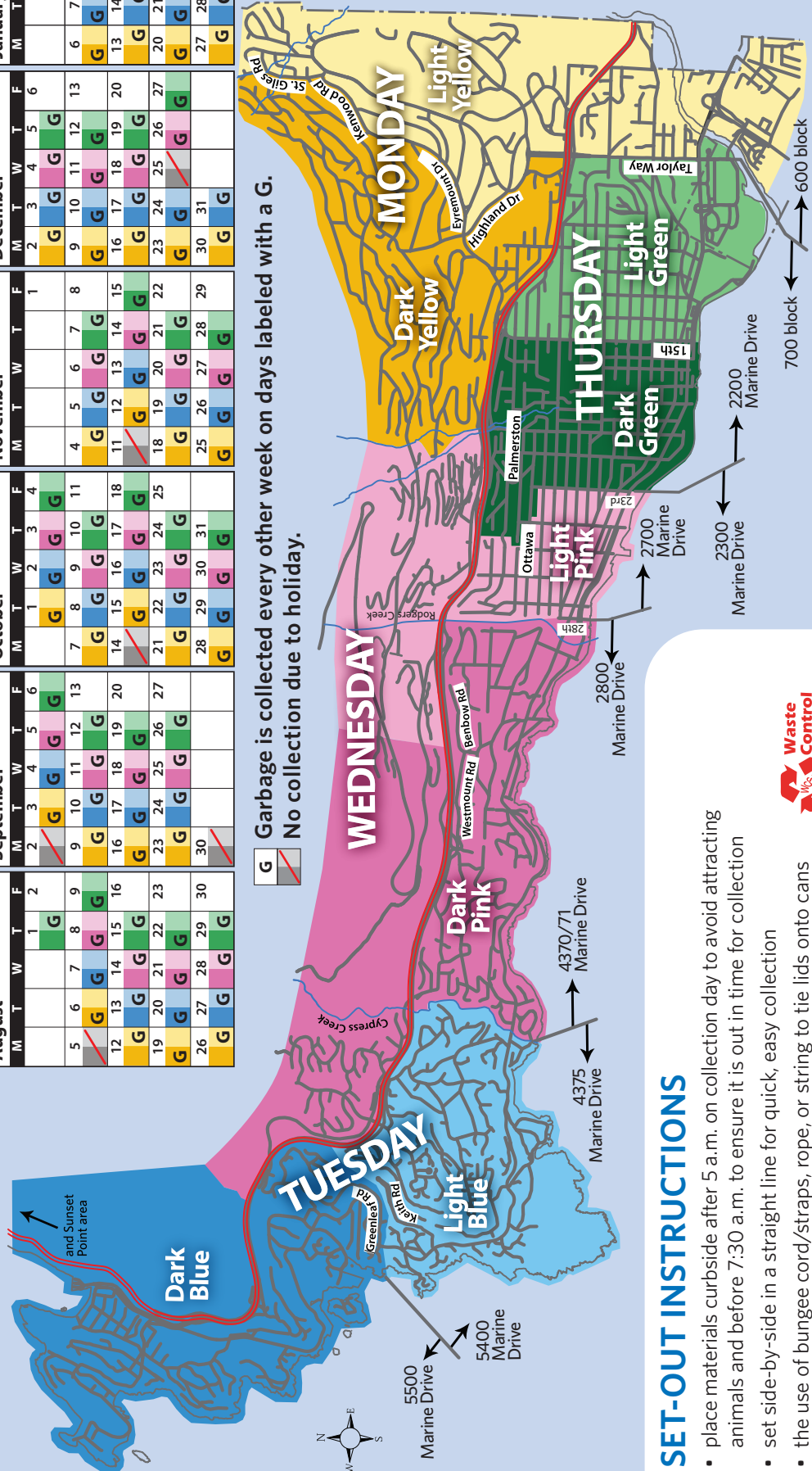
## Provincial Take-Back Programs

Many commonly disposed of items are recyclable through Provincial Take-Back Programs and are accepted for recycling at designated drop-off depots. To find the correct drop-off location for your material, visit [rbc.ca](http://rbc.ca) or call the **Recycling Hotline** at 604-RECYCLE (604-732-9253). Not all depots accept all items.

# 2024 WEST VANCOUVER COLLECTION CALENDAR

December 2023		January 2024		February		March		April		May		June		July																											
M	T	W	T	F	S	M	T	W	T	F	S	M	T	W	T	F	S	M	T	W	T	F	S	M	T	W	T	F	S												
				1		1	2	3	4	5		1	2	3	4	5		1	2	3	4	5		1	2	3	4	5		1	2	3	4	5							
4	5	6	7	8	9	8	9	10	11	12	13	6	7	8	9	10	11	10	11	12	13	14	15	8	9	10	11	12	13	10	11	12	13	14	15	8	9	10	11	12	13
11	12	13	14	15	16	12	13	14	15	16	17	11	12	13	14	15	16	13	14	15	16	17	18	17	18	19	20	21	22	15	16	17	18	19	20	15	16	17	18	19	20
18	19	20	21	22	23	19	20	21	22	23	24	18	19	20	21	22	23	22	23	24	25	26	27	24	25	26	27	28	29	22	23	24	25	26	27	22	23	24	25	26	27
25	26	27	28	29	30	26	27	28	29	30	31	25	26	27	28	29	30	29	30					27	28	29	30	31		24	25	26	27	28	29	22	23	24	25	26	27
29	30	31				29	30	31				29	30	31				29	30					27	28	29	30	31		24	25	26	27	28	29	22	23	24	25	26	27
29	30	31				29	30	31				29	30	31				29	30					27	28	29	30	31		24	25	26	27	28	29	22	23	24	25	26	27

August		September		October		November		December		January 2025																									
M	T	W	T	F	S	M	T	W	T	F	S	M	T	W	T	F	S	M	T	W	T	F	S	M	T	W	T	F	S						
5	6	7	8	9	10	2	3	4	5	6	7	1	2	3	4	5	6	1	2	3	4	5	6	2	3	4	5	6	7	1	2	3	4	5	6
12	13	14	15	16	17	9	10	11	12	13	14	7	8	9	10	11	12	4	5	6	7	8	9	9	10	11	12	13	14	6	7	8	9	10	11
19	20	21	22	23	24	16	17	18	19	20	21	14	15	16	17	18	19	11	12	13	14	15	16	16	17	18	19	20	21	13	14	15	16	17	18
26	27	28	29	30	31	23	24	25	26	27	28	21	22	23	24	25	26	18	19	20	21	22	23	23	24	25	26	27	28	20	21	22	23	24	25
26	27	28	29	30	31	30						28	29	30	31			25	26	27	28	29	30	30	31					27	28	29	30	31	



**G** Garbage is collected every other week on days labeled with a G.  
 No collection due to holiday.

**COLLECTED WEEKLY**

- Green Can
- Yard trimmings
- Recycling
- by Recycle BC

**COLLECTED EVERY OTHER WEEK**

- Garbage

## SET-OUT INSTRUCTIONS

- place materials curbside after 5 a.m. on collection day to avoid attracting animals and before 7:30 a.m. to ensure it is out in time for collection
- set side-by-side in a straight line for quick, easy collection
- the use of bungee cord/straps, rope, or string to tie lids onto cans is prohibited and will result in your materials not being collected

**Waste Control Services Inc.**