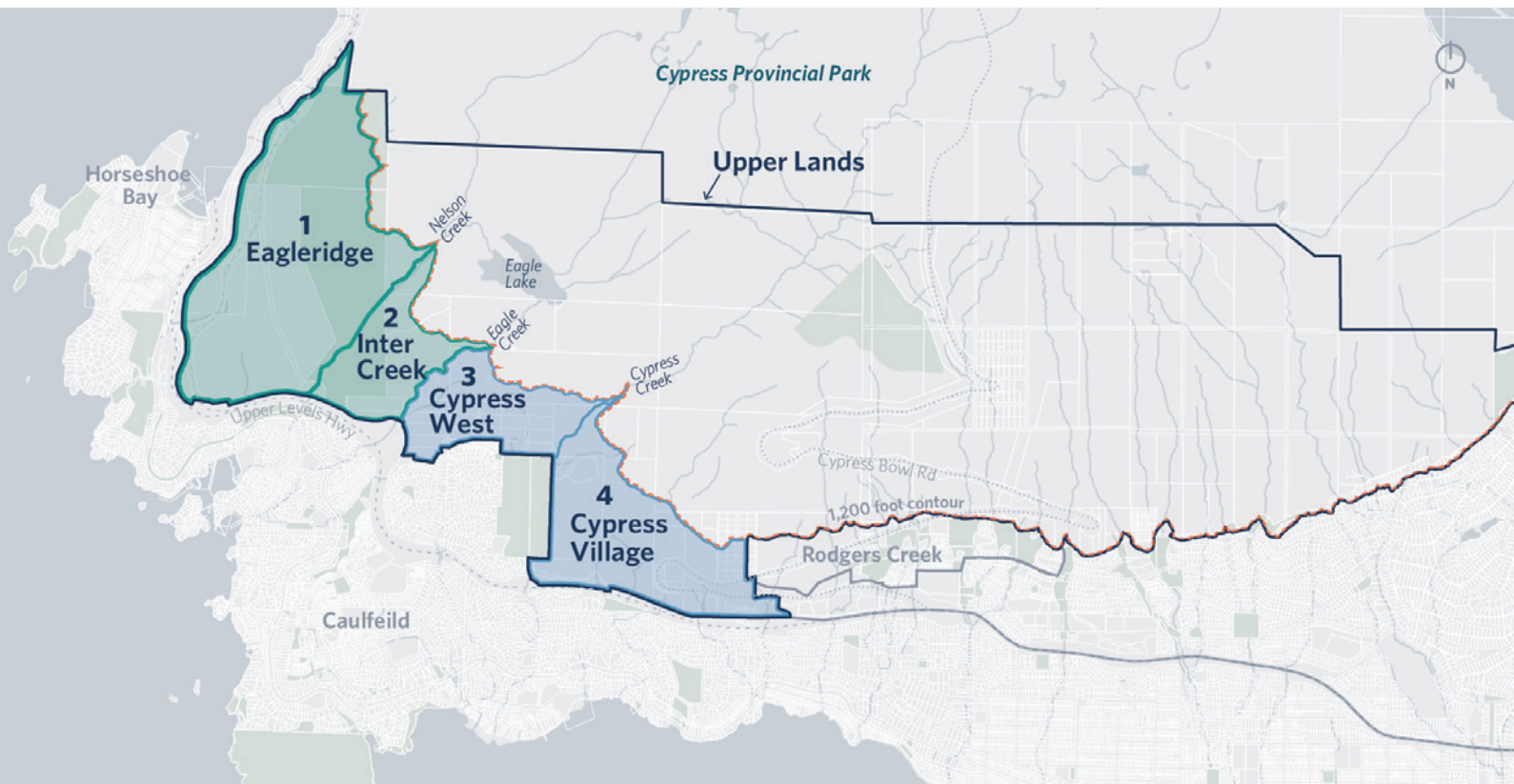




Map of the Upper Lands Planning Areas

The Upper Lands refers to all of the undeveloped land north of Highway 1 and below Cypress Provincial Park and the Capilano Watershed Reserve, from the eastern edge of West Vancouver out to Horseshoe Bay.



The Upper Lands include undeveloped lands above and below the 1200 foot contour.

Lands above the 1200 foot contour are designated as a Limited Use and Recreation Development Permit Area in the 2018 Official Community Plan. No changes to the designation for these lands are proposed as part of this planning process.

The Upper Lands below the 1200 foot contour are divided into four remaining planning areas:

- 1. Cypress Village**
- 2. Cypress West**
- 3. Inter Creek**
- 4. Eagleridge**

These areas are west of the Rodgers Creek neighbourhood, which is currently being developed. Most of the lands in these four planning areas are owned by British Pacific Properties but small portions are owned by the District of West Vancouver or others.