

# Pickleball Update for Hugo Ray Park

Report to Council - May 30, 2022

Corinne Ambor, Parks Stewardship Manager  
Andrew Banks, Senior Manager of Parks

Doc.#4825260

west vancouver

# Presentation Outline

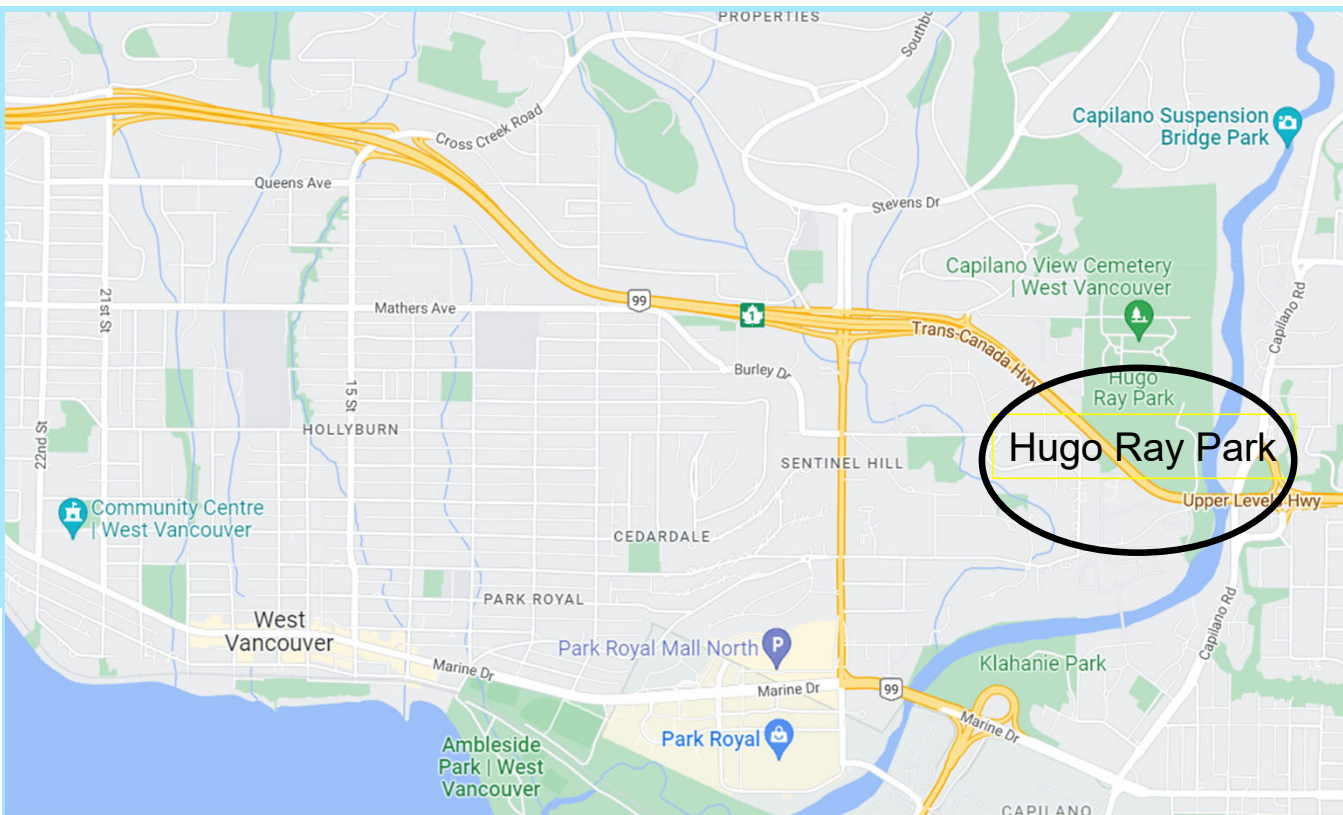
1. **Hugo Ray Park and Pickleball**
2. **Key Criteria for determining optimal locations in Hugo Ray Park**
3. **Review of Options**
4. **Recommendation**

# 1 Hugo Ray Park and Pickleball

PICKLEBALL UPDATE FOR HUGO RAY PARK  
REPORT TO COUNCIL – MAY 30, 2022

west vancouver

# Hugo Ray Park and Pickleball



- locations within park are away from residences
- available parking
- access to park washrooms
- available space for future expansion of pickleball courts
- park can accommodate the proposed dedicated pickleball courts from a traffic and parking perspective

# 2 Key criteria for determining optimal locations in Hugo Ray Park

# Evaluation of Locations in Hugo Ray Park

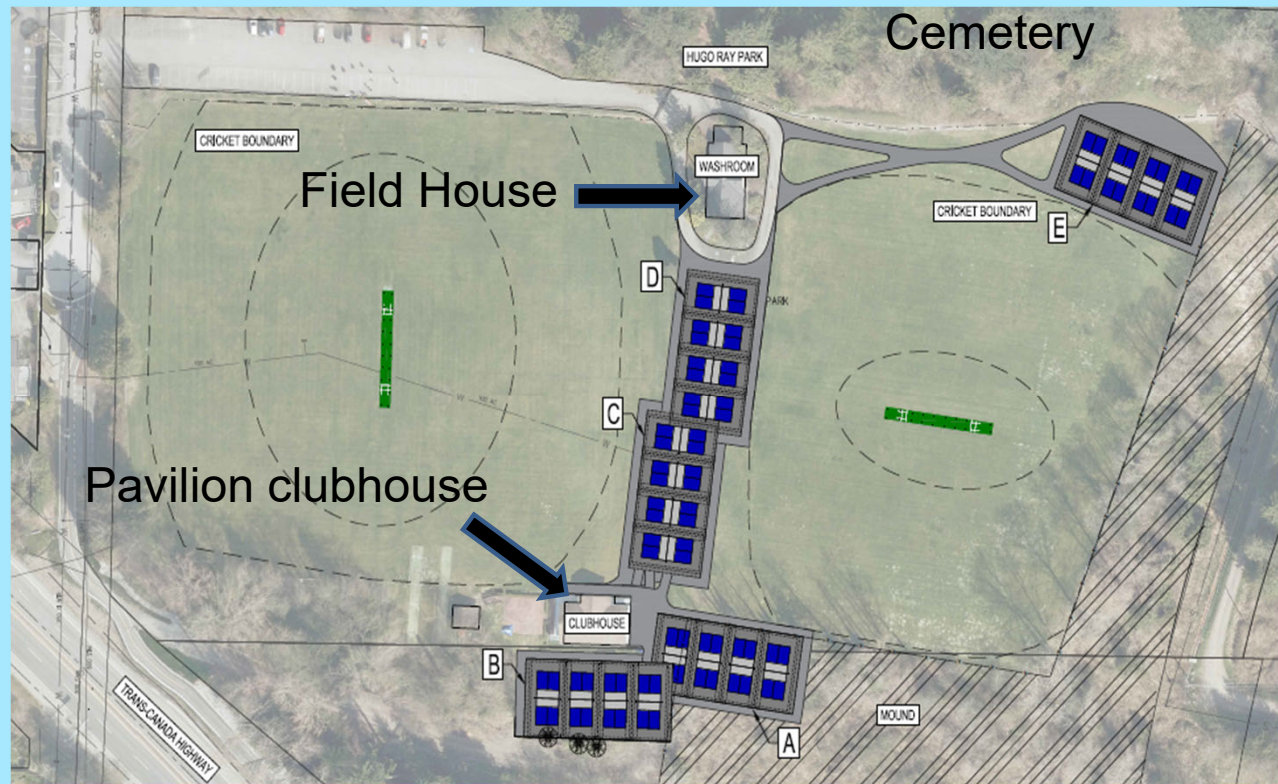
## Key Criteria

- minimize the impact of dedicated pickleball courts on existing park amenities and users
- minimize the impact of the noise of the sport on nearby residences
- construction considerations and costs
- ability to expand and add more dedicated pickleball courts in future phases

# 3 Review of Options

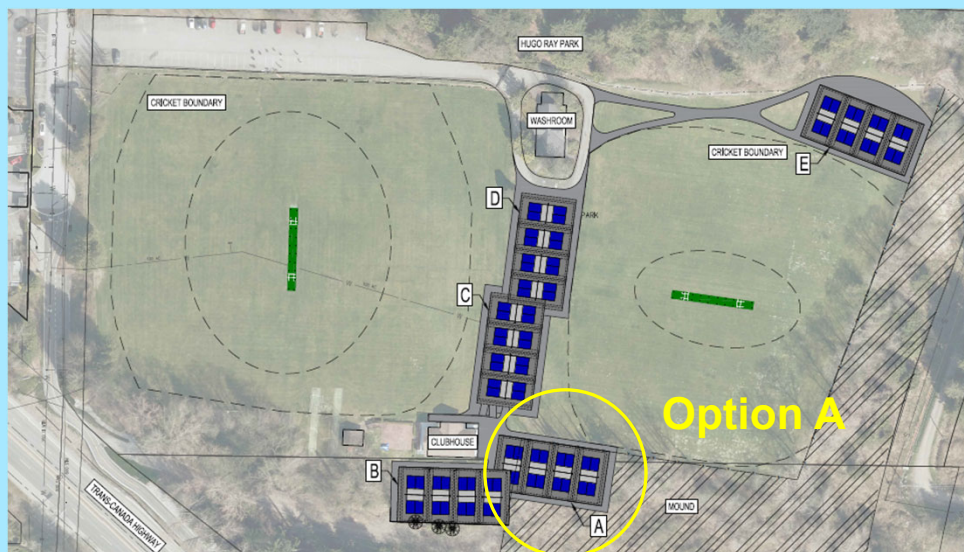
# Options for Locating Pickleball in Hugo Ray Park

## Hugo Ray Park





## Option A: East of Pavilion Clubhouse



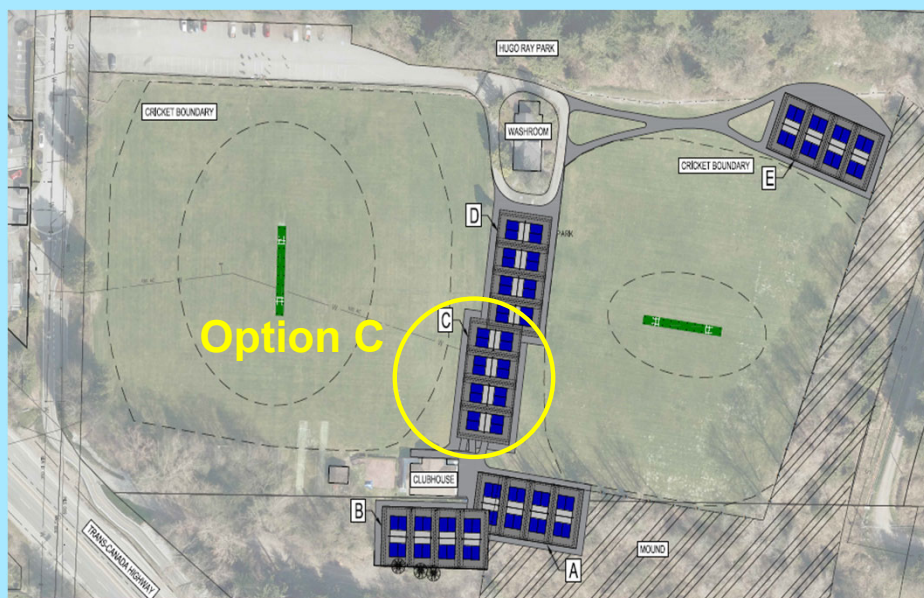
- low impact on current usage and users of the park
- utilizes an underused area of the park
- requires tree removal
- not expected to have a significant impact with the noise of the sport on residences west and south of the park
- allows for the future expansion of courts
- preliminary Class D estimate is \$516,000
- recommendation is to proceed with Option A for community engagement

## Option B: South of Pavilion Clubhouse



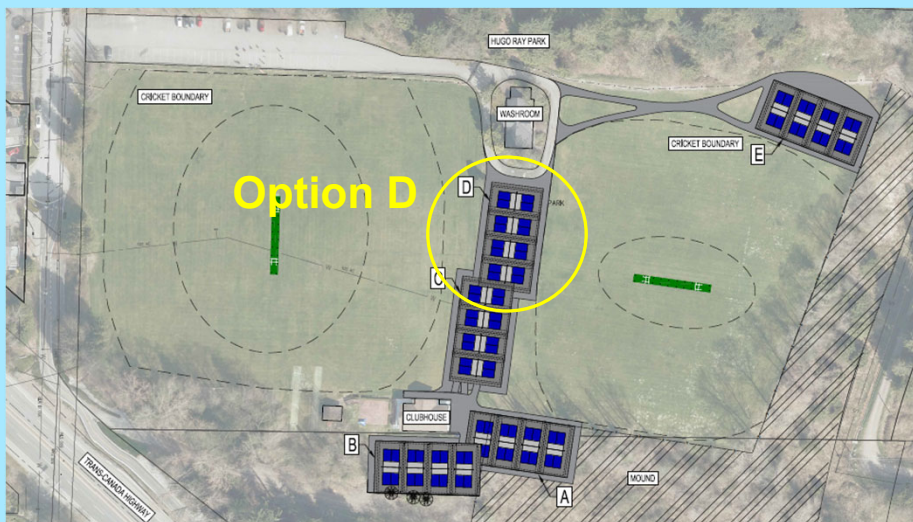
- low impact on current usage and users of the park
- utilizes an underused area of the park
- requires tree removal
- not expected to have a significant impact with the noise of the sport on residences west of the park, may impact residences south of the highway
- allows for the future expansion of courts
- preliminary Class D estimate is \$490,000
- recommendation is not to proceed with Option B for community engagement

## Option C: North of Pavilion Clubhouse



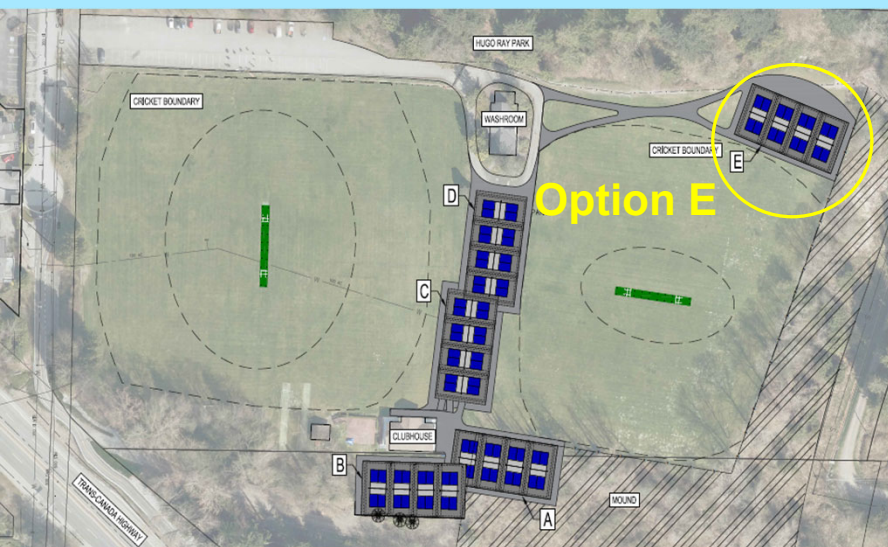
- impacts current usage of the park
- visually prominent to residences and users of the park
- not expected to have a significant impact with the noise of the sport on residences west and south of the park
- allows for the future expansion of courts
- preliminary Class D estimate is \$465,000
- recommendation is to proceed with Option C for community engagement

## Option D: Parking Lot South of Field House



- impacts current usage and users of the park, removal of 18 parking stalls
- affects emergency access to Pavilion clubhouse
- visually prominent to residences and current users
- not expected to have a significant impact with the noise of the sport on residences west and south of the park
- allows for the future expansion of courts
- preliminary Class D estimate is \$463,000 plus new emergency access
- recommendation is not to proceed with Option D for community engagement

## Option E: Northeast Corner of Park



- low impact on current usage and users of the park
- not overly visible to residences west of the park
- not expected to have a significant impact with the noise of the sport on residences west and south of the park
- will affect some visitors of Capilano View Cemetery with the sound of pickleball sport
- does not allow for future expansion of courts
- preliminary Class D estimate is \$445,000
- recommendation is not to proceed with Option E for community engagement

# 4 Recommendation

# Recommendation

THAT

1. staff be directed to proceed with community engagement of Option A and Option C as outlined in this report for the location of four dedicated pickleball courts in Hugo Ray Park; and
2. staff report to Council on the outcome of the community engagement with recommendations on next steps for the installation of dedicated pickleball courts in Hugo Ray Park.

**Thank You!**  
**Questions?**