

Ambleside Waterfront Plan

Presentation to District of West Vancouver Council

September 9, 2019





Ambleside Waterfront Concept Plan

2015–2016 Background

Consultation Process

- **Fall 2015:** Outreach with Stakeholders — Connect to discuss issues and opportunities
- **Winter 2015:** Concept and Detail Design (Public Open Houses, community survey, summary of engagement outcomes) — Share and review overall waterfront vision and advance details and priorities of constituent parts
- **Spring 2016:** Synthesis — Analyze and present consultation findings
- **Spring 2016:** Report to Council — Proposal of waterfront plan and implementation
- Endorsed by Council on **Monday, June 13th, 2016.**

Ambleside Waterfront Concept Plan

Guiding Principles



Public Ownership



Waterfront Destination - Local and Regional



Continuous Public Walkway



Shoreline Edge



Arts & Culture



Community Arts



Heritage Value



Waterfront Commercial Activities



Accessibility



Sailing Club

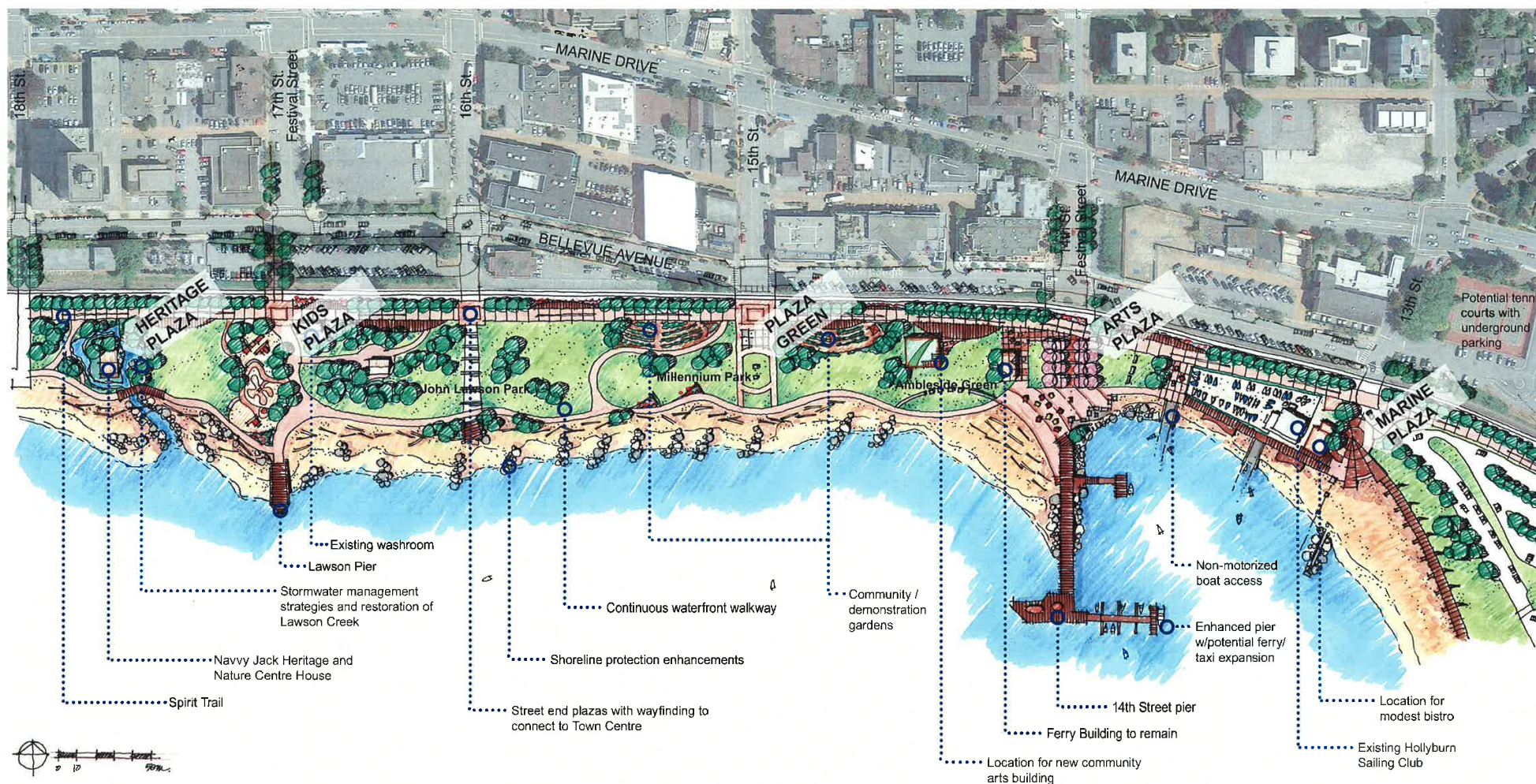


Building Scale & Character



Connection to Ambleside Village

THE AMBLESIDE WATERFRONT CONCEPT PLAN



AMBLESIDE WATERFRONT CONCEPT PLAN



west vancouver

"The plan builds on the success of 40 years of acquiring, planning and improving a publicly-owned waterfront. While keeping the essentials of what makes it special, the plan proposes more public open space, improvements to community facilities and new ways to experience the waterfront. It also proposed to leverage the waterfront's potential to attract people to businesses just steps away in Ambleside."

—District of West Vancouver Public Engagement Display Boards, 2016



PWL partnership

west vancouver

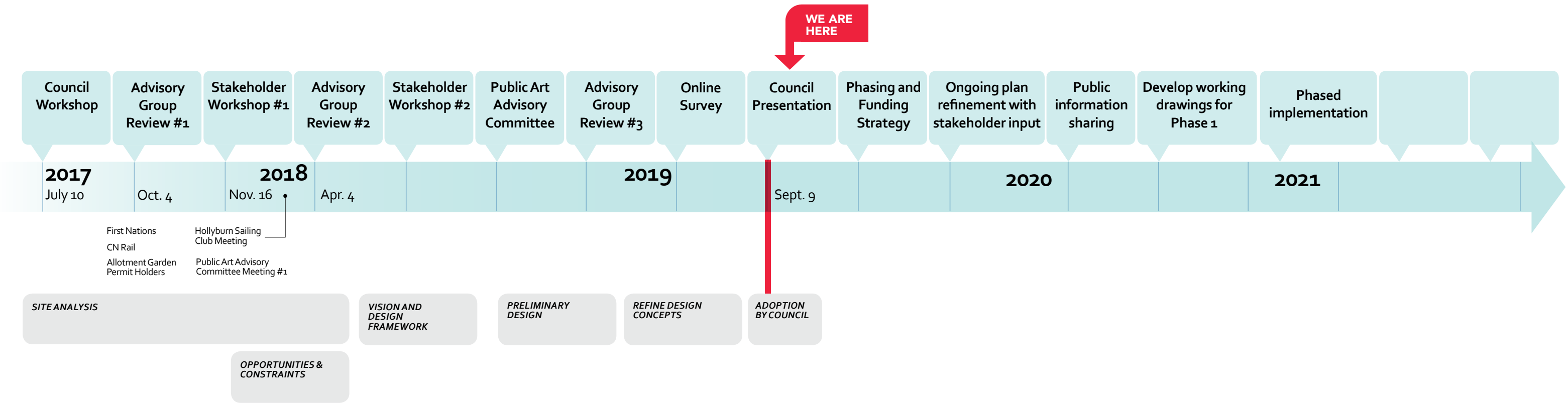
First Implementation Phase

Late 2016–Early 2017

- Installation of vehicle pick-up and drop-off lay by at entrance to Ambleside Park
- Enhancements to the Spirit Trail at the 1400-1600 blocks of Argyle Avenue, dedicated pedestrian pathways creating better separation of pedestrian and cyclists
- Closure of the boat ramp to motorized vehicles
- Removal of houses at 1454, 1468, 1472, and 1756 Argyle Avenue to create additional parkland and enhanced access to the water

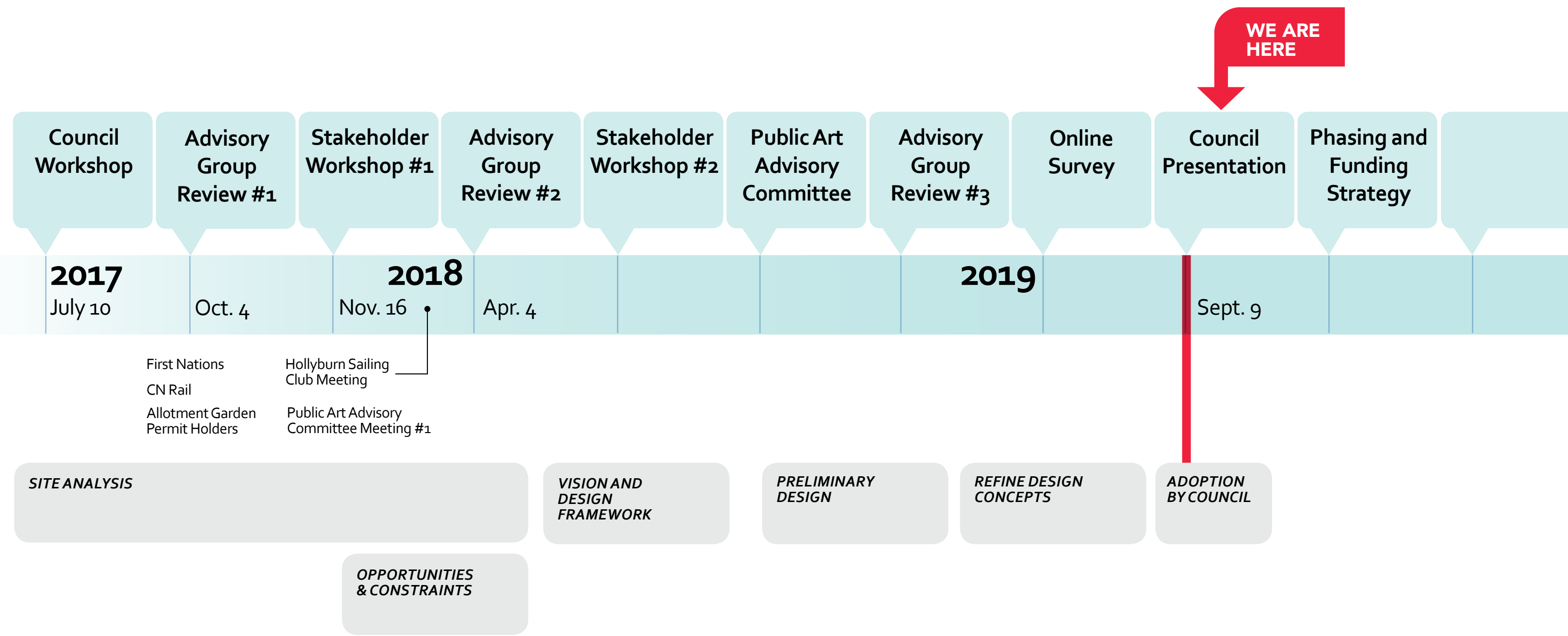
Public Engagement

Timeline

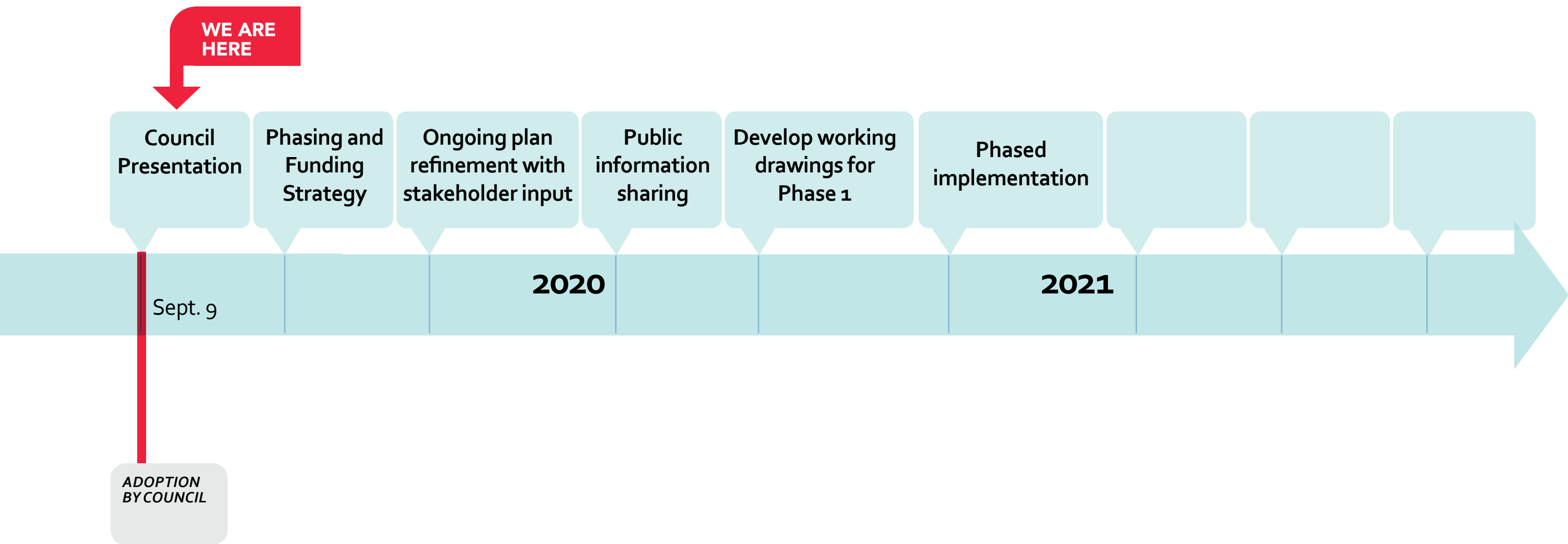


Public Engagement: 2017– Present

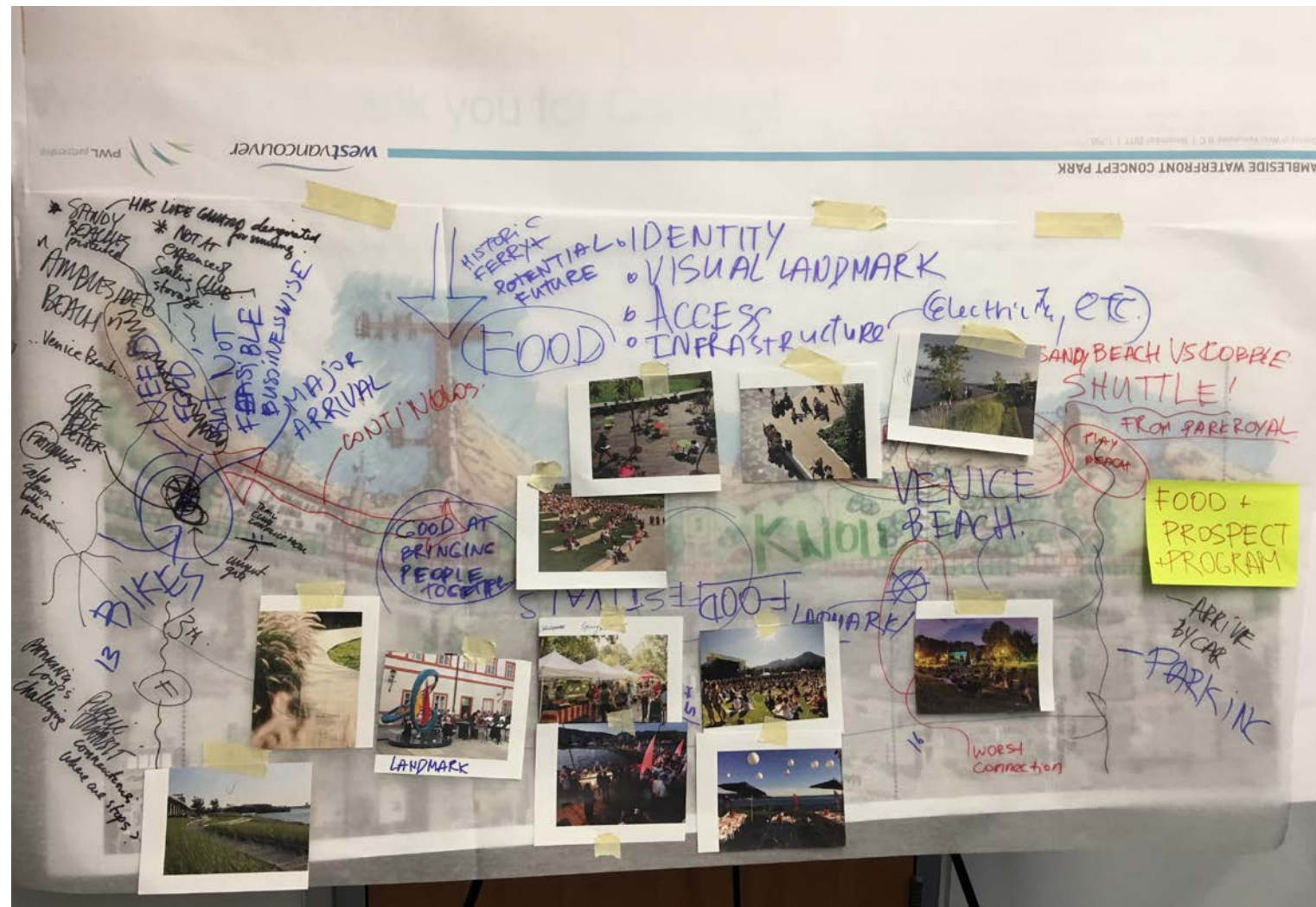
Stakeholders + Advisory Group



Anticipated Timeline: Moving Forward



Stakeholders + Advisory Group



Design Principles



01

Preserve views of the waterfront and maintain existing tree canopy



02

Create a continuous, connected waterfront that promotes access to beaches



03

Restore the shoreline and plan for rising seas



04

Provide flexible space that will encourage a variety of active and passive activities



05

Create links to the village and its businesses, drawing inspiration from location character and history



06

Improve safety, universal accessibility, and signage/wayfinding

Design Principles



07

Welcoming atmosphere that fosters community interaction and involvement



08

Emphasize Ambleside Municipal Town Centre as the heart of West Vancouver



09

Update shoreline protection strategies and flood construction



10

Maintain and care for the District's valuable parks and open spaces



11

Provide open space, public realm improvements and/or greenway trails through the town and village centres planning processes



12

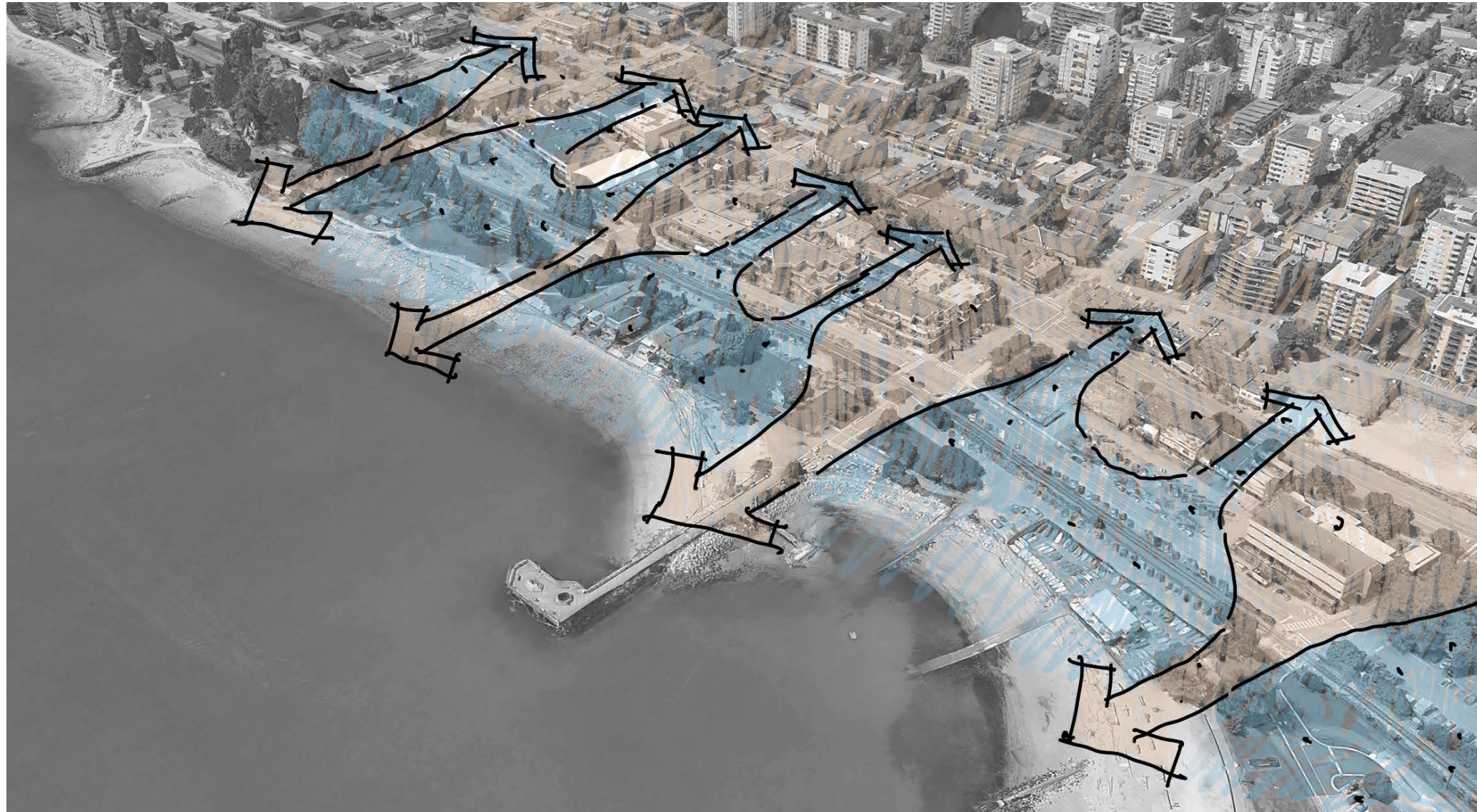
Provide continuously connected Spirit Trail along Argyle Avenue

Context



- Historic and culturally significant
- Vibrant recreational destination
- Natural foreshore
- Integration into surrounding urban fabric of Ambleside Village

Urban + Natural Interface



- Waterfront character
- Foreshore environment
- Integration into urban fabric of Ambleside Business Community
- Intertwining of contrasting experiences

Strengthening Connections



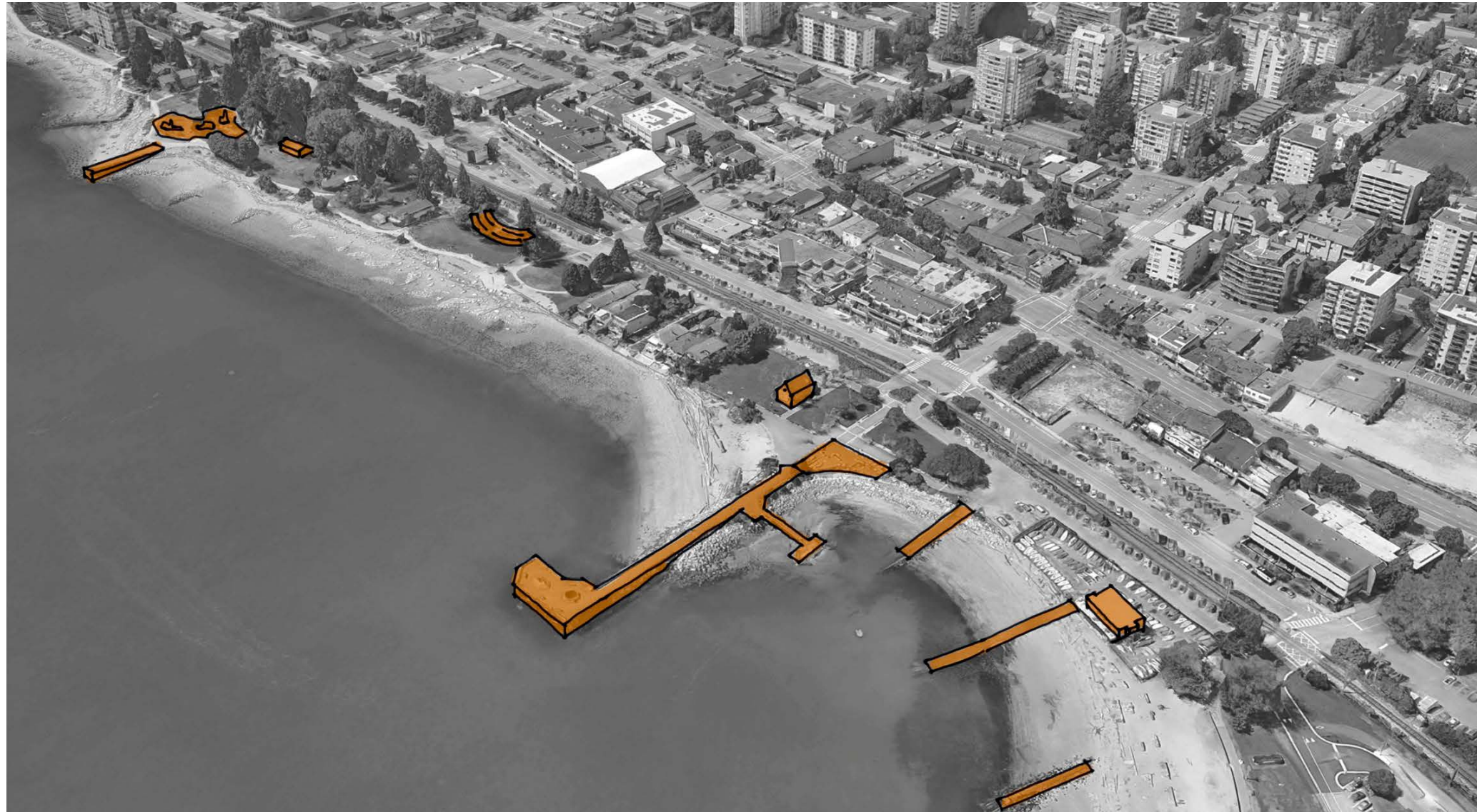
- North | South Avenue connections into Ambleside Business Community
- East | West Spirit Trail
- East | West waterfront pathway

Existing Trees



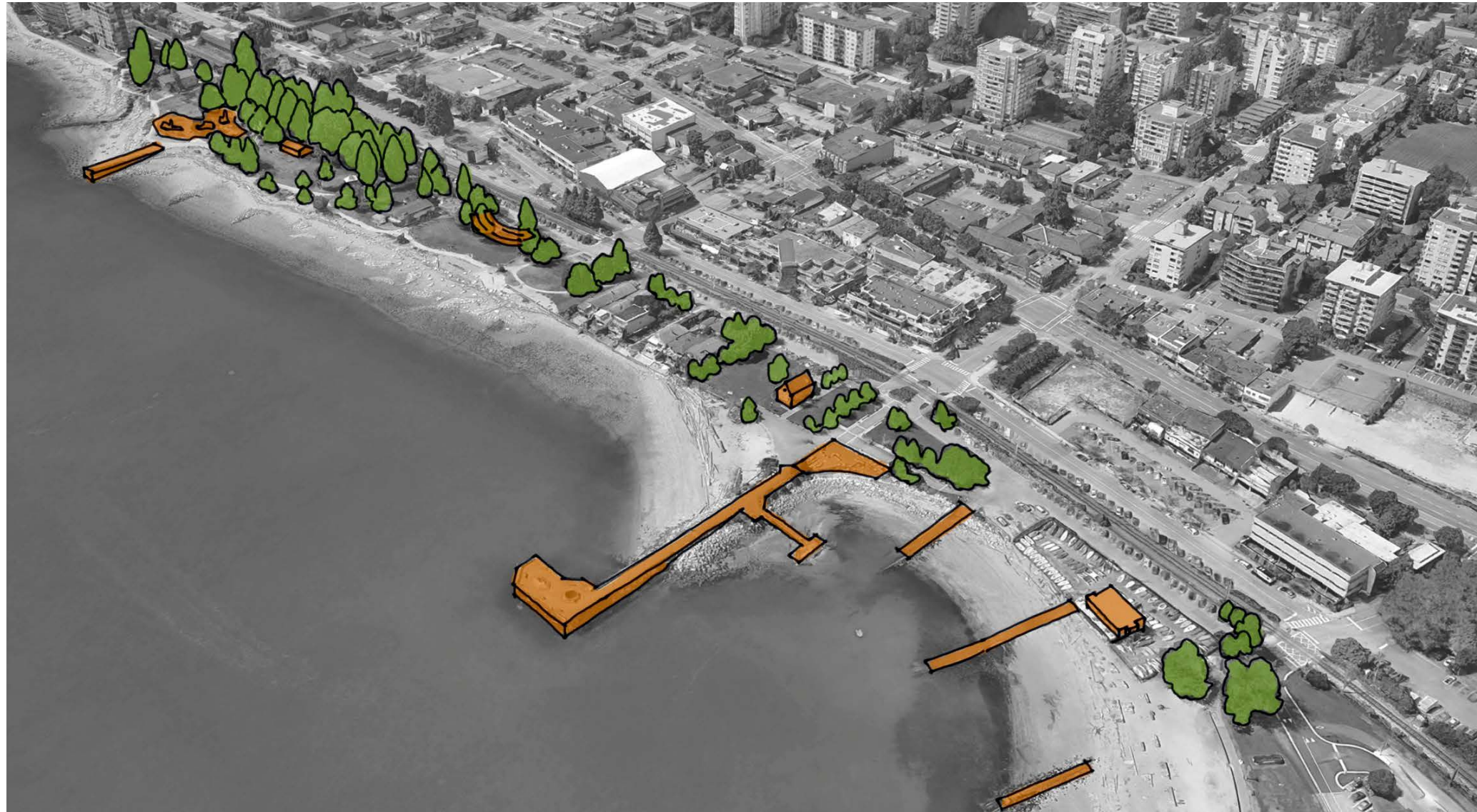
- Retention of large standing mature trees
- Enhances form and character of the existing waterfront

Retained Structures



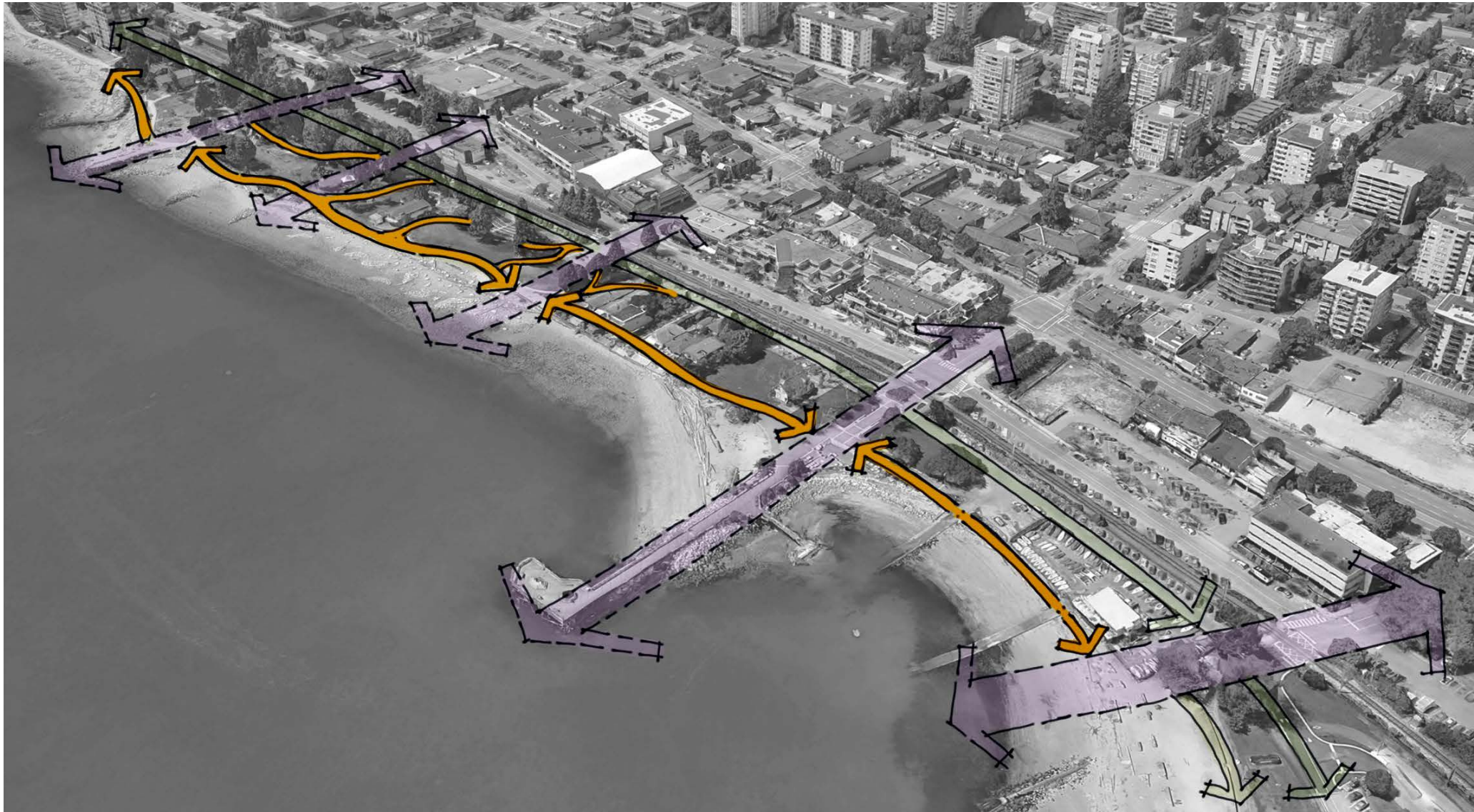
- John Lawson Pier and Playground
- John Lawson Park picnic pavilion
- Community gardens
- Historic Ferry Building
- 14th Street Piers
- Hollyburn Sailing Club

Overlay of Existing Features



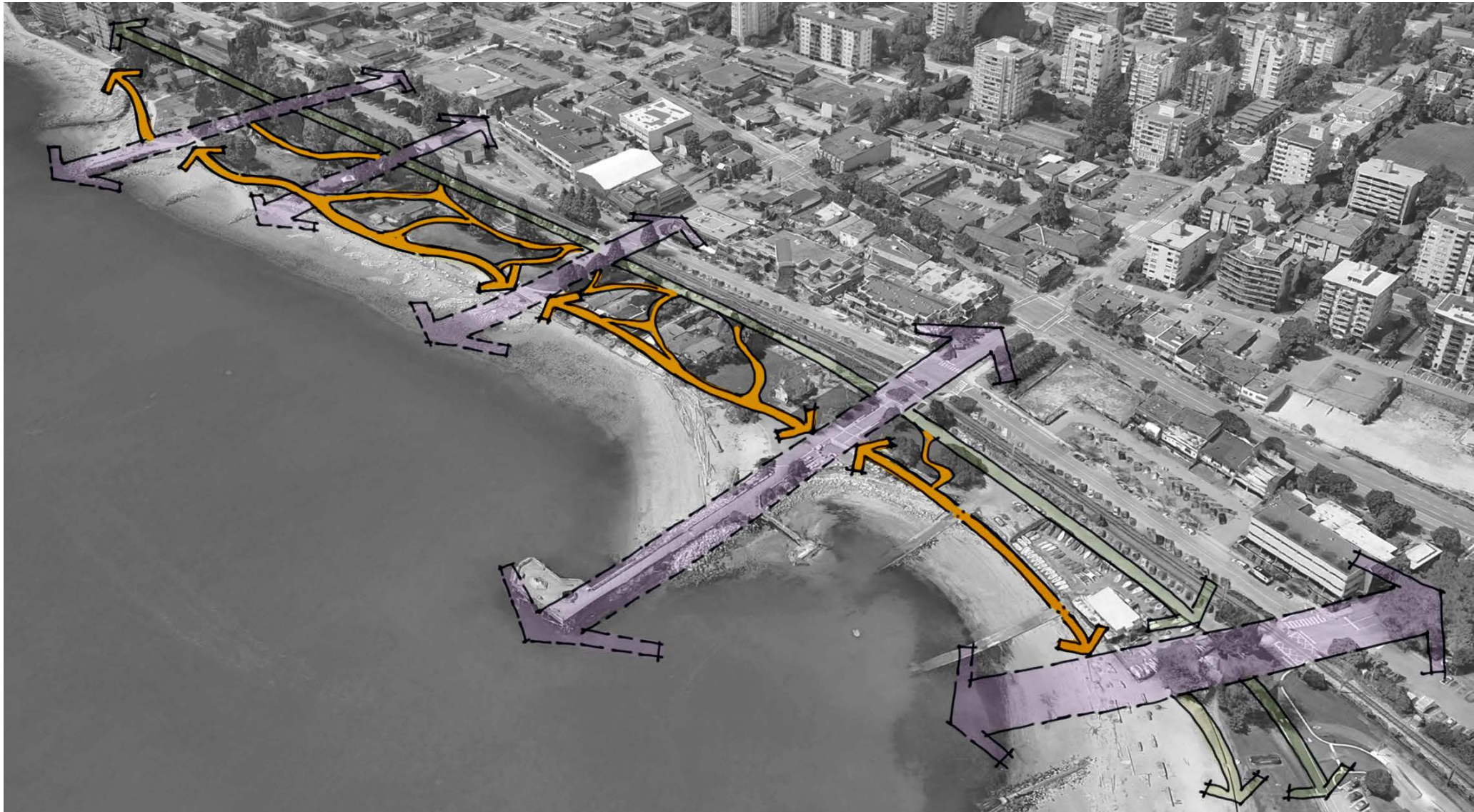
- Existing components of the foreshore landscape establish the character and image of Ambleside Waterfront

Existing Secondary Circulation



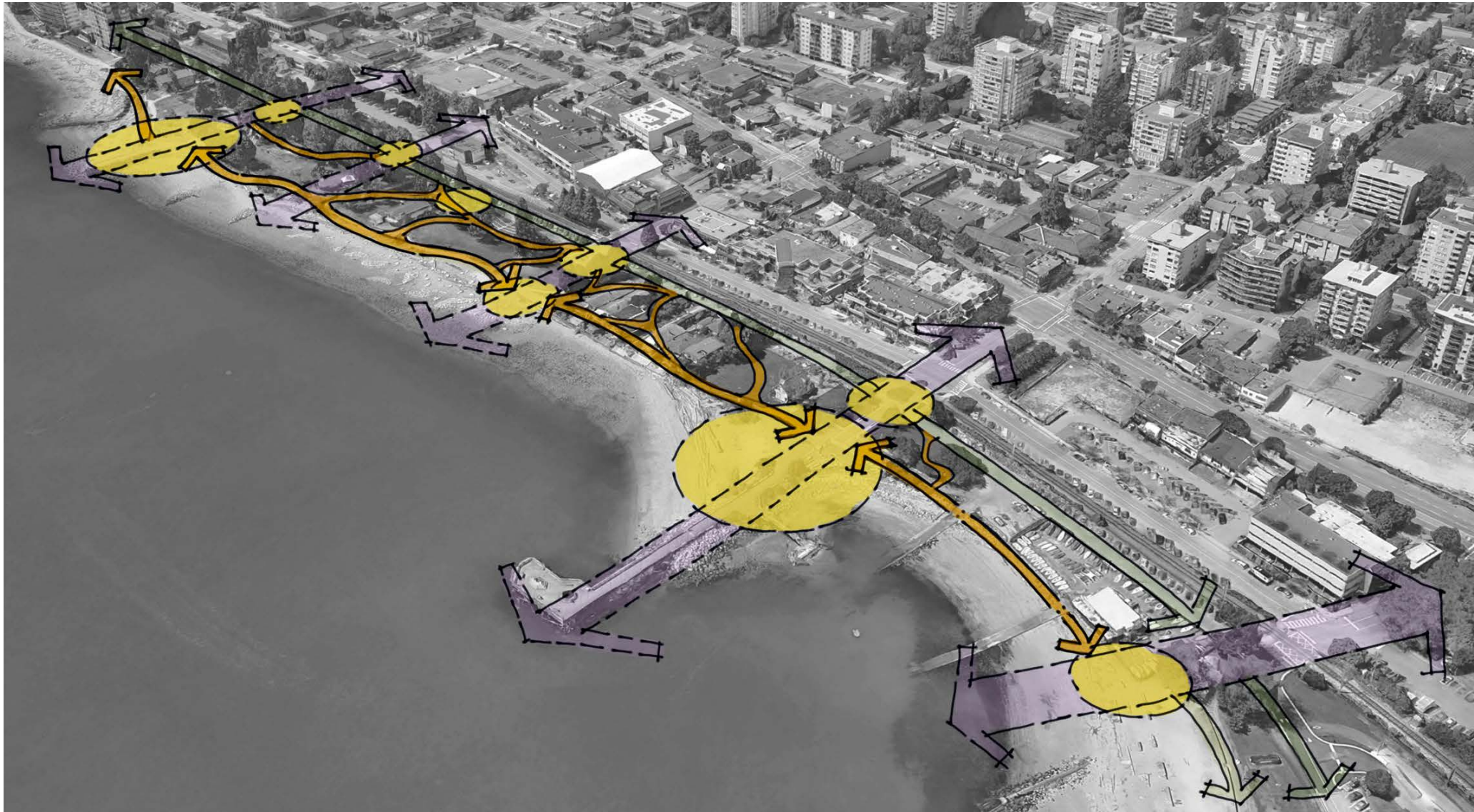
- Enhancement of the site-wide network of pedestrian paths, trails, and walkways to provide access and accessibility through a variety of programmed spaces

Enhanced Secondary Circulation



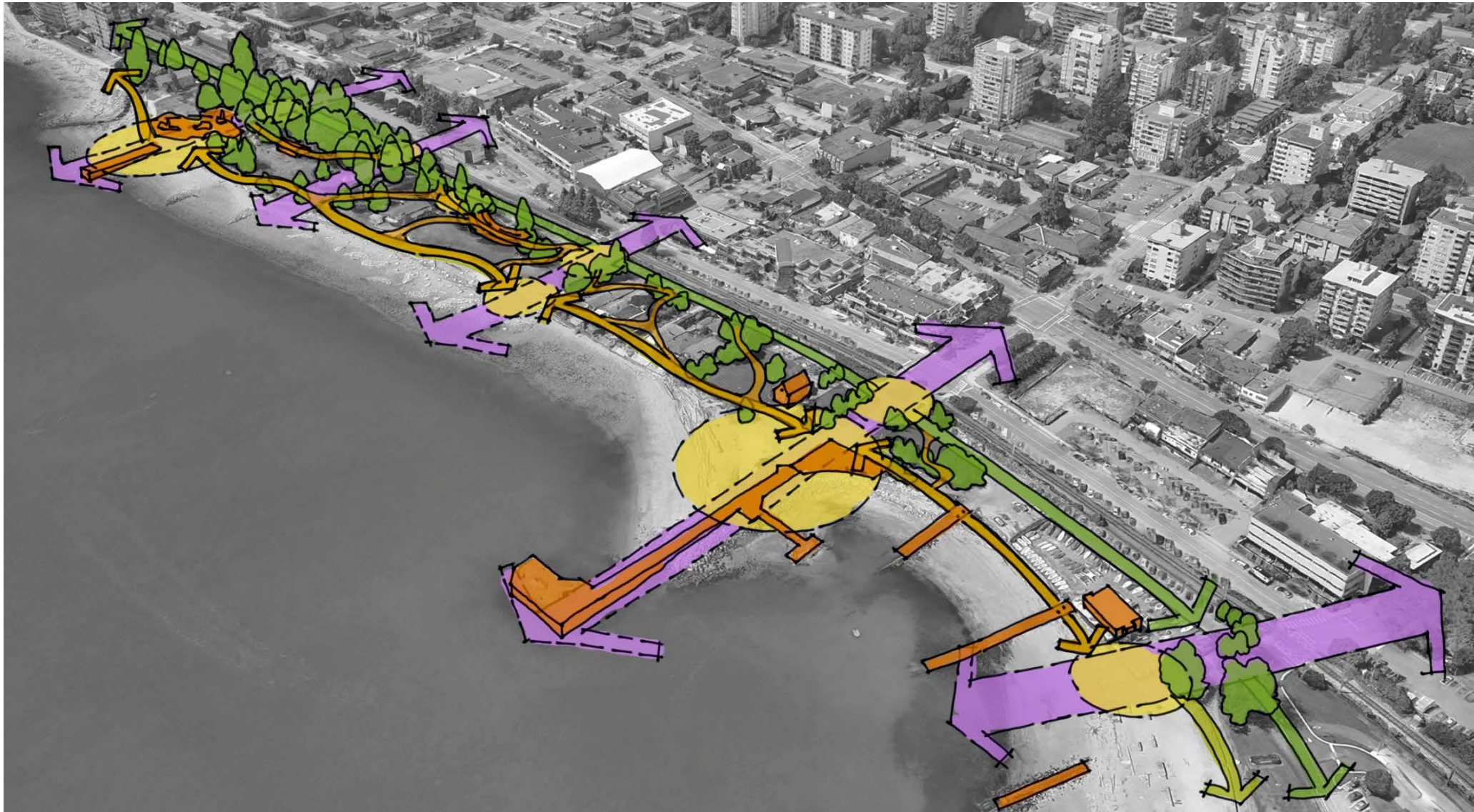
- Proposed introduction of additional paths, trails and walkways that encourage slower, more experiential pedestrian movement

Proposed Plazas, Nodes & Places



- Creation of memorable and varied places, experiences and activities
- Creation of nodes and places that will provide continued and increasing use of the waterfront
- Creation of a variety of active and passive programming for all ages, interests and abilities

Concept Overlay



- The pattern overlay creates an important framework that guides the design of the Ambleside Waterfront
- A hierarchy of circulation patterns, active and passive spaces and places is established

Sea Level Rise



- Protect and Enhance the Foreshore
- Foreshore Habitat Restoration Strategy
- Phased Approach Over Time

Concept Overlay (With Sea Level Rise)





Ambleside Waterfront Plan:

- | | | | |
|--|------------------------------|------------------------------|---|
| ① VERTICAL IDENTIFIERS EXTENDING FROM VILLAGE TO FORESHORE | ⑥ EXISTING COMMUNITY GARDENS | ⑪ SPIRIT TRAIL | ⑬ NON-MOTORIZED BOAT LAUNCH |
| ② BOARDWALK | ⑦ PROPOSED COMMUNITY GARDENS | ⑫ SHORT TERM BOAT MOORAGE | ⑭ ENHANCED GRANITE ASSEMBLAGE WATER FEATURE |
| ③ MARINE PLAZA | ⑧ SEATING WALLS | ⑬ PLAZA EXTENSION TO BEACH | ⑮ PLACEHOLDER LOCATION FOR FACILITY |
| ④ SMALL GATHERING AREAS | ⑨ 15TH STREET LANDING | ⑭ FERRY BUILDING | |
| ⑤ 16TH STREET LANDING | ⑩ OPEN LAWN | ⑮ 14TH STREET FESTIVAL PLAZA | |



14th Street Corridor

VERTICAL MARKERS
TO CREATE A VISUAL
CONNECTION TO THE
WATER



GRANITE SLABS AS
EXTENSION OF WATER
FEATURE ELEMENTS

WATERFRONT PAVING
PATTERNING



17th Street Corridor



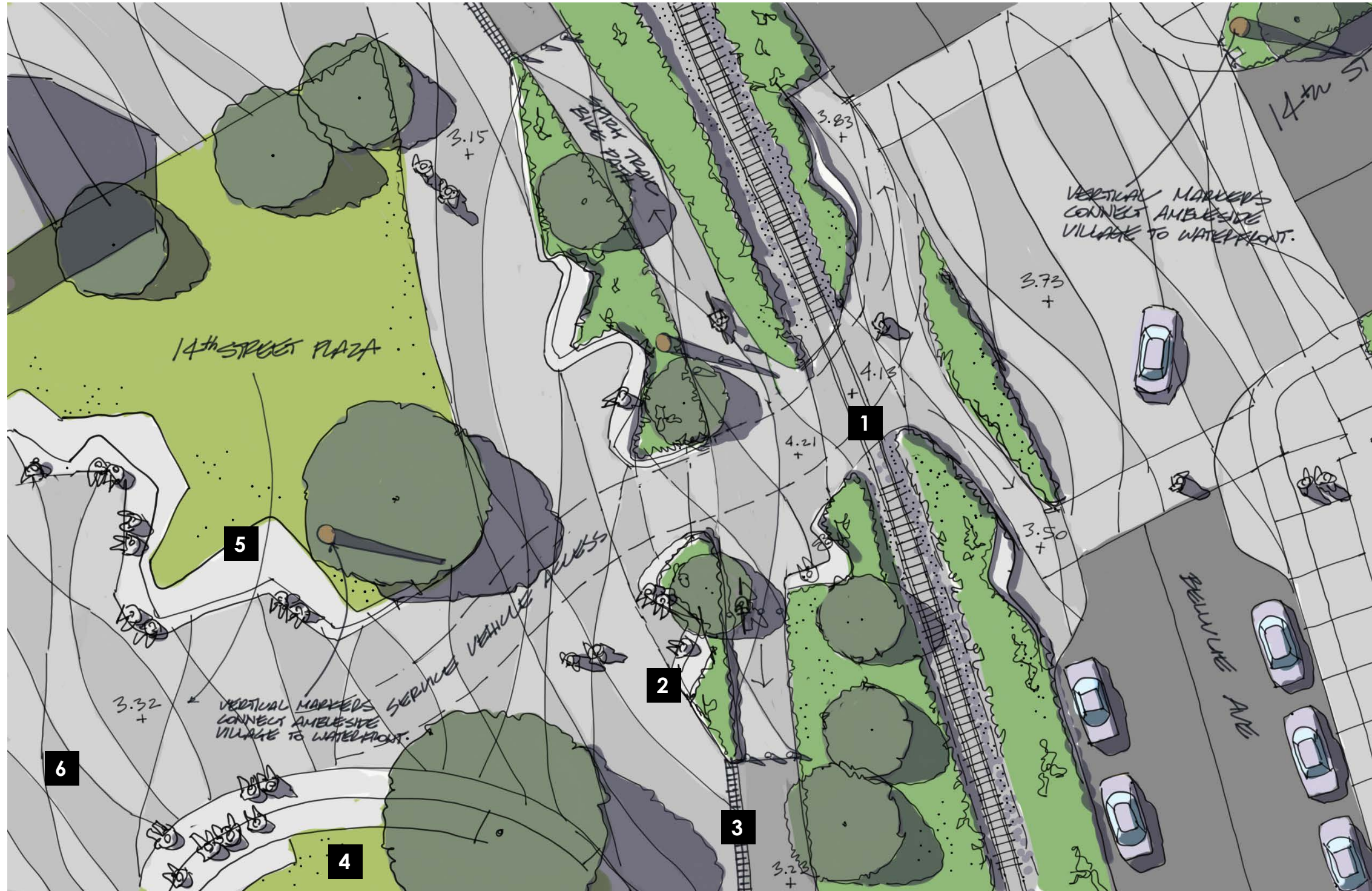
Spirit Trail Interface

15th Street



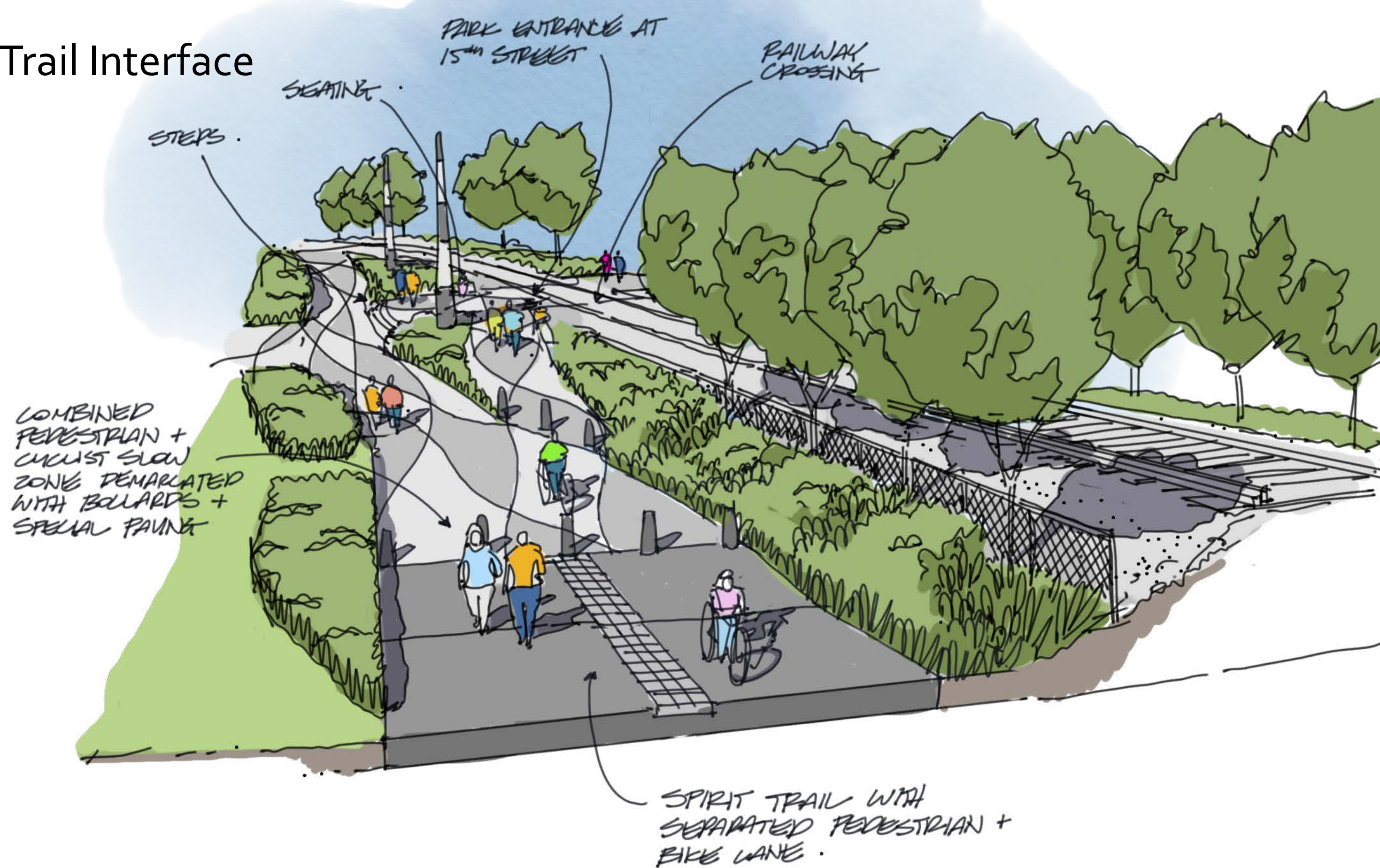
- 1 ENTRANCE PLAZA AT RAILING CROSSING
- 2 SEATING WALLS
- 3 SPIRIT TRAIL – BIKE PATH
- 4 OPEN LAWN
- 5 TERRACED SEATING WALLS
- 6 ENHANCED PAVING

14th Street



- 1 ENTRANCE PLAZA AT RAILING CROSSING
- 2 SEATING WALLS
- 3 SPIRIT TRAIL – BIKE PATH
- 4 OPEN LAWN
- 5 TERRACED SEATING WALLS
- 6 ENHANCED PAVING

Spirit Trail Interface





Spirit Trail Interface

14th Street Park Entry and Arts Plaza



Arts Plaza at the Ferry Building



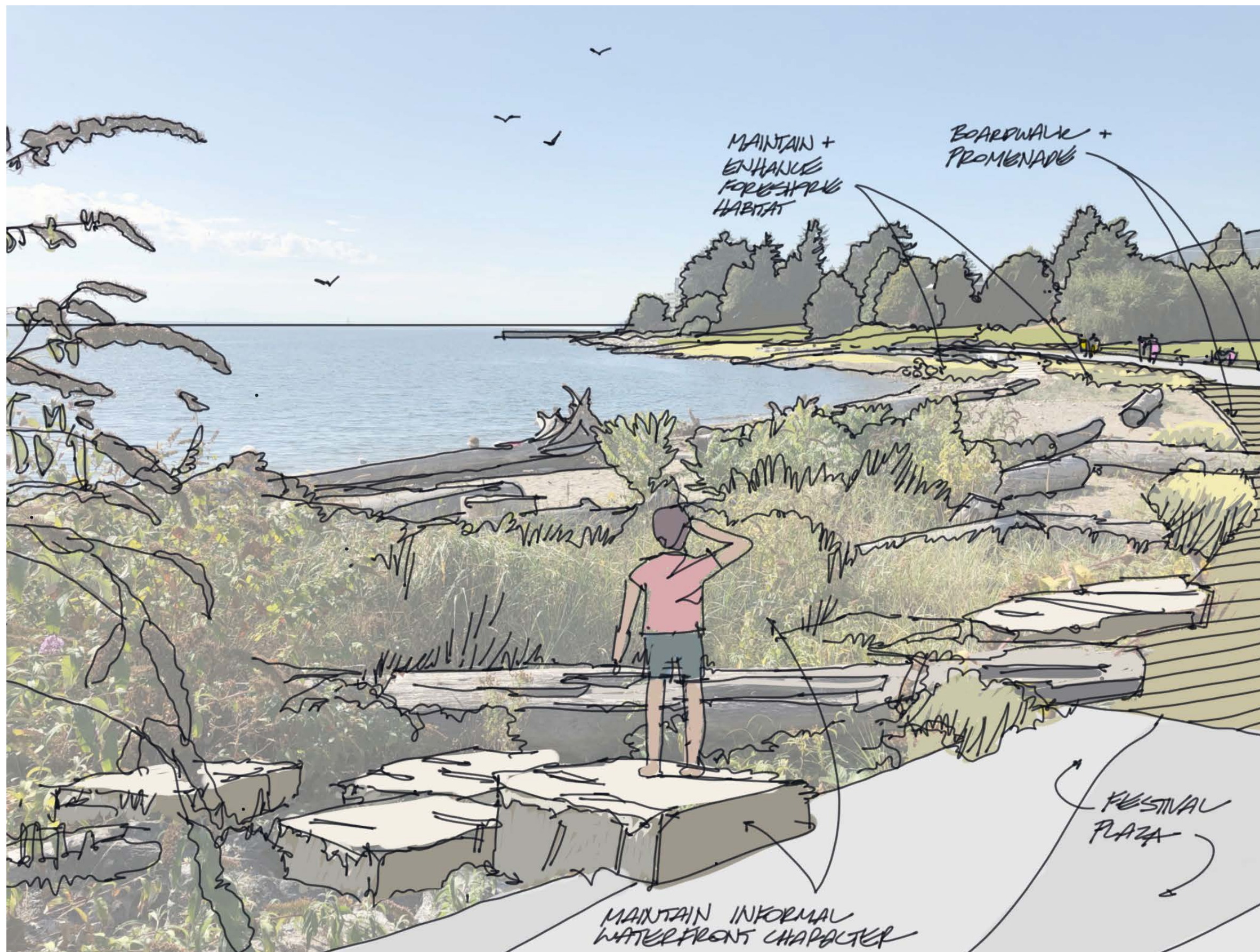
POTENTIAL CONFIGURATION DURING EVENTS



CONFIGURATION DURING NON-EVENT TIMES

Arts Plaza and Granite Assemblage





Naturalized Waterfront and Boardwalk



Thank You!