

Welcome!

Today we would like your input on how Horseshoe Bay Park can be upgraded to serve the community's needs better.

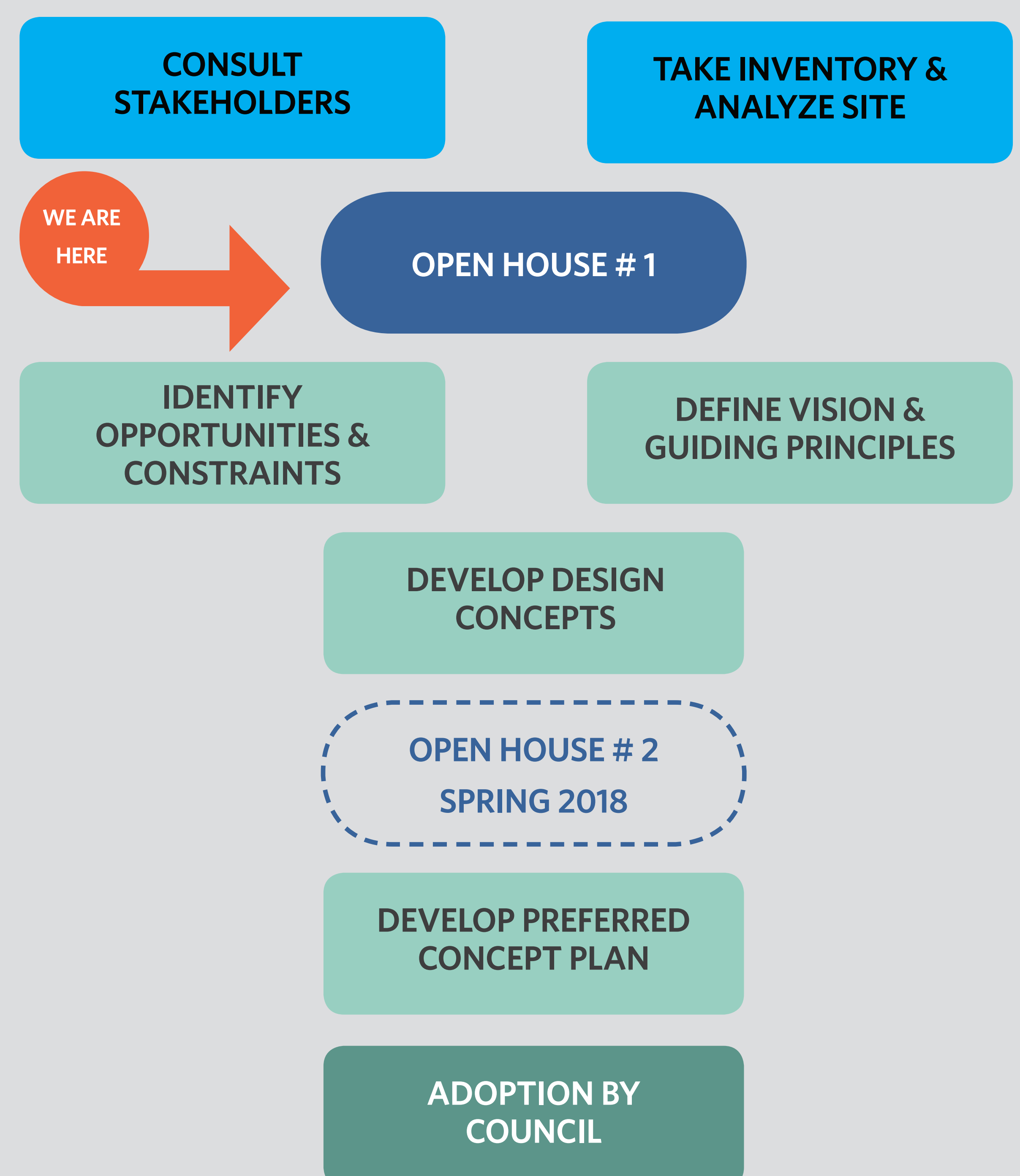
Goals for today

- Share our observations about the functional challenges and opportunities for the site
- Learn what priorities the community prefers for the park
- Begin to think about where the best places are for various improvements

Please take some sticky dots and sticky notes to add your ideas to the boards!



Where are we in the process?



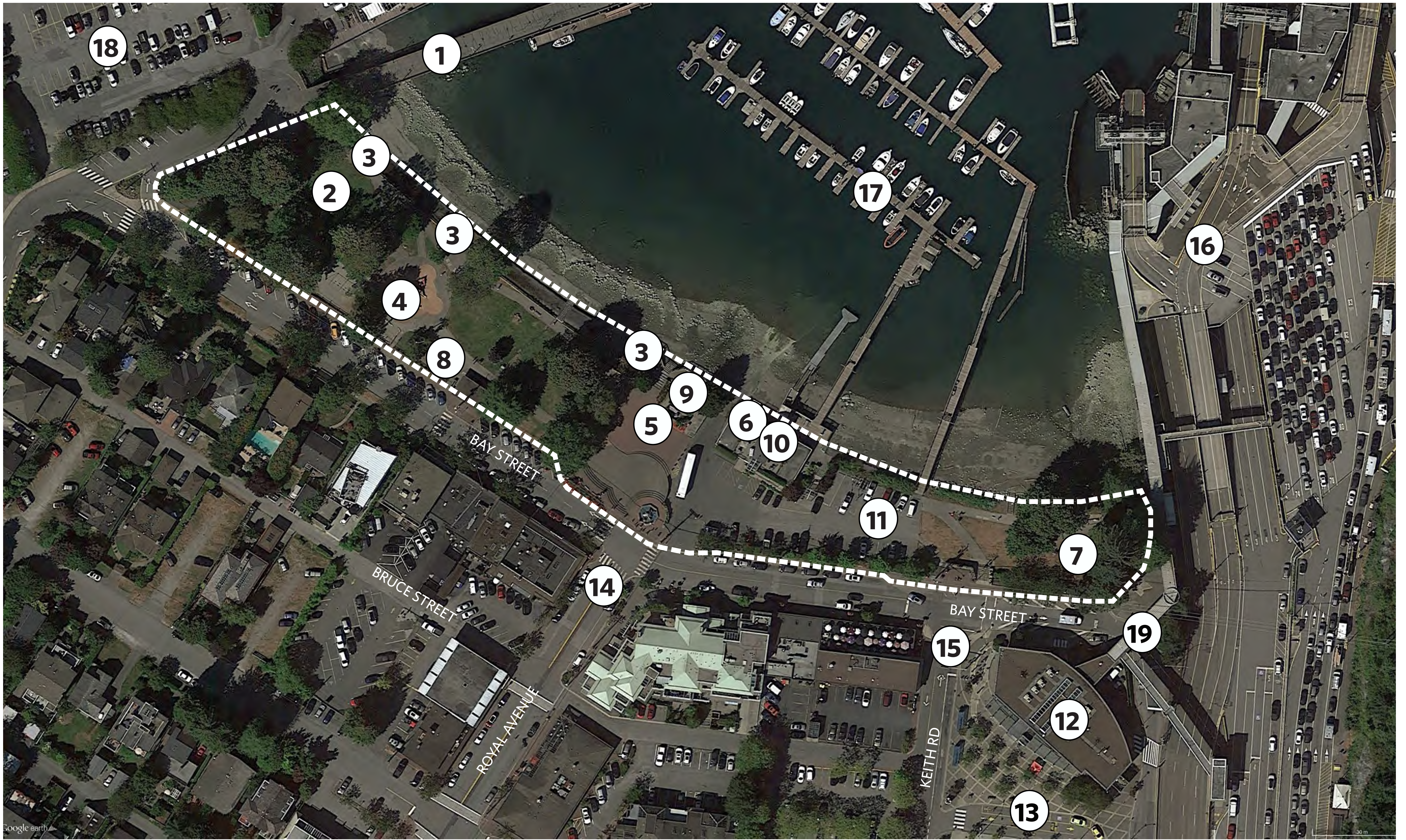
Have questions?

Contact: Ian Haras, Parks Planning & Development Manager

604-925-7143

iharas@westvancouver.ca

The park today - features analysis



1 PIER

In fair condition.

2 LAWN & TREE AREA

Used for picnics, family gatherings and informal sports.

3 VIEWING PLATFORMS

In fair condition.

4 PLAY AREA & SPRAY PARK

Well-used by children. Condition varies; some elements in disrepair.

5 PLAZA

Central location, but under-used.

6 BOAT LAUNCH

Provides access to water.

7 EAST GRASS AREA

Used by ferry passengers. Shaded.

8 WASHROOMS

In need of upgrade.

9 LIFT STATION

Noisy and unsightly. Relocation may be possible in the long term.

10 MARINA OFFICE

Tourist draw in warmer months.

11 MARINA PARKING

Required for marina operation.

12 FOOT PASSENGER TERMINAL

13 BUS LOOP

14 VILLAGE CENTRE

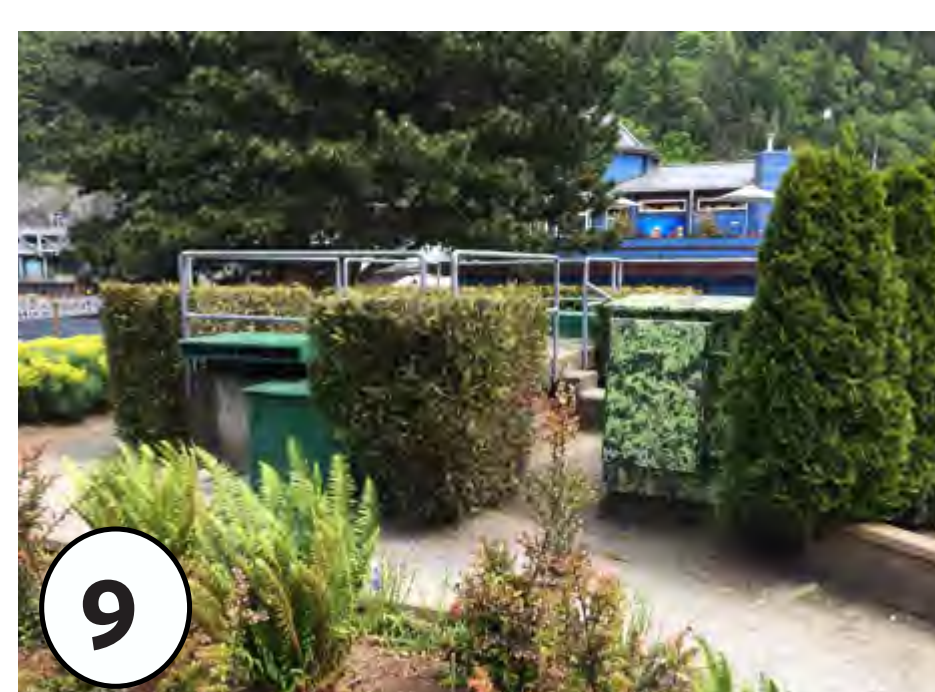
15 ARRIVAL INTERSECTION

16 FERRY LOADING AREA

17 MARINA DOCK

18 FUTURE WEST BANK DEVELOPMENT

19 FOOT PASSENGER CONNECTION



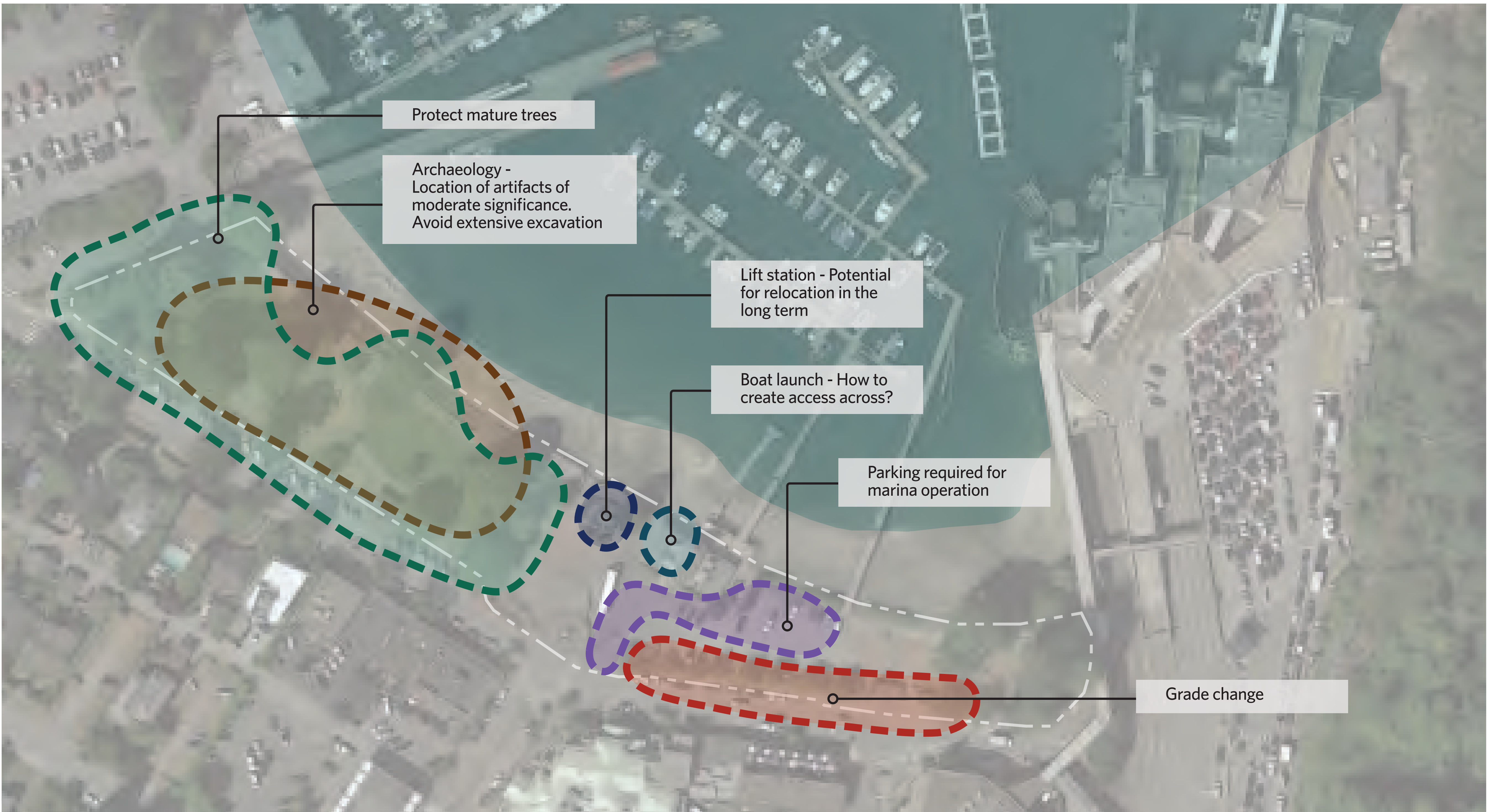
PWL partnership

west vancouver

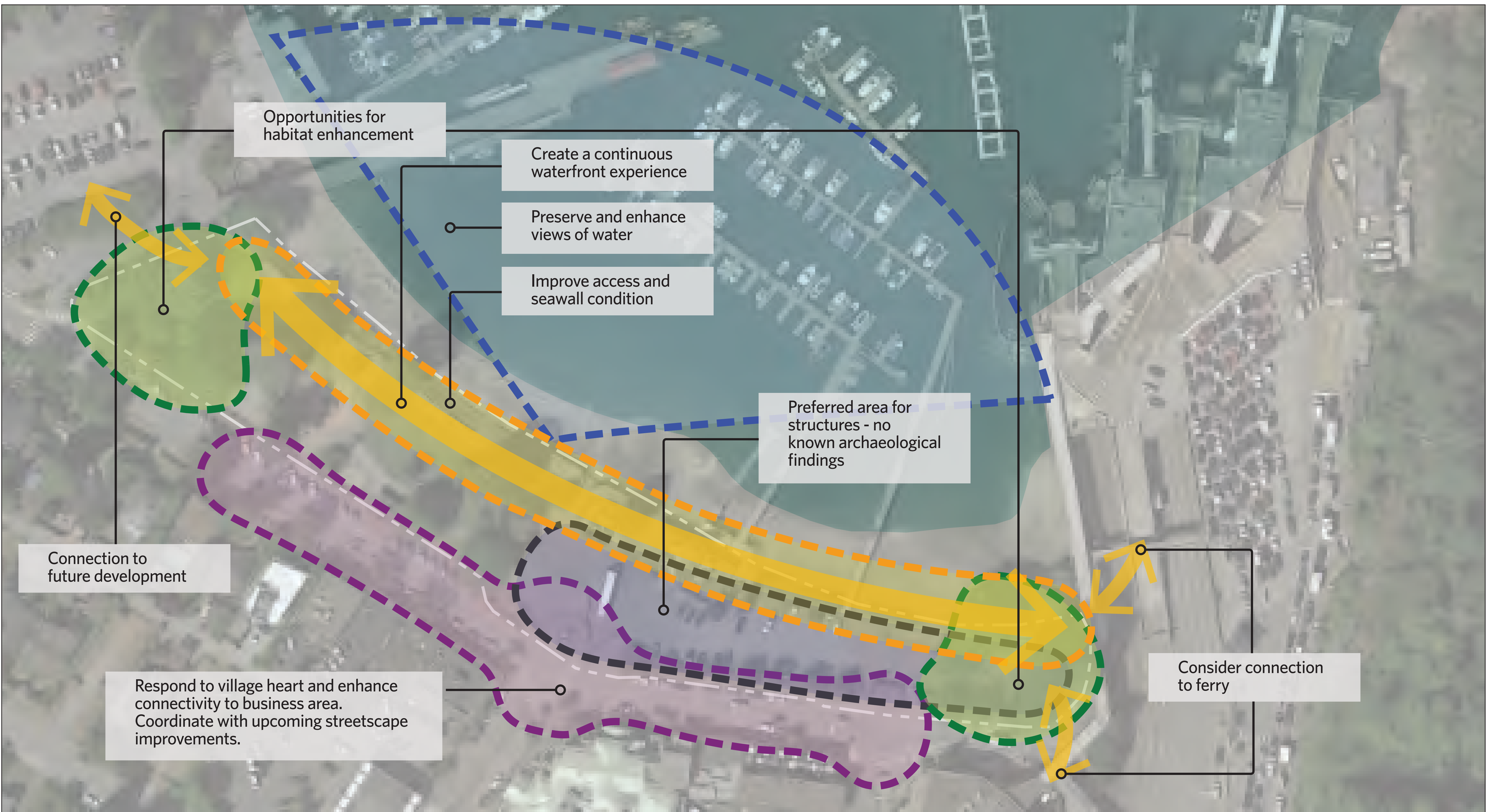


The park today - site analysis

KEY CHALLENGES



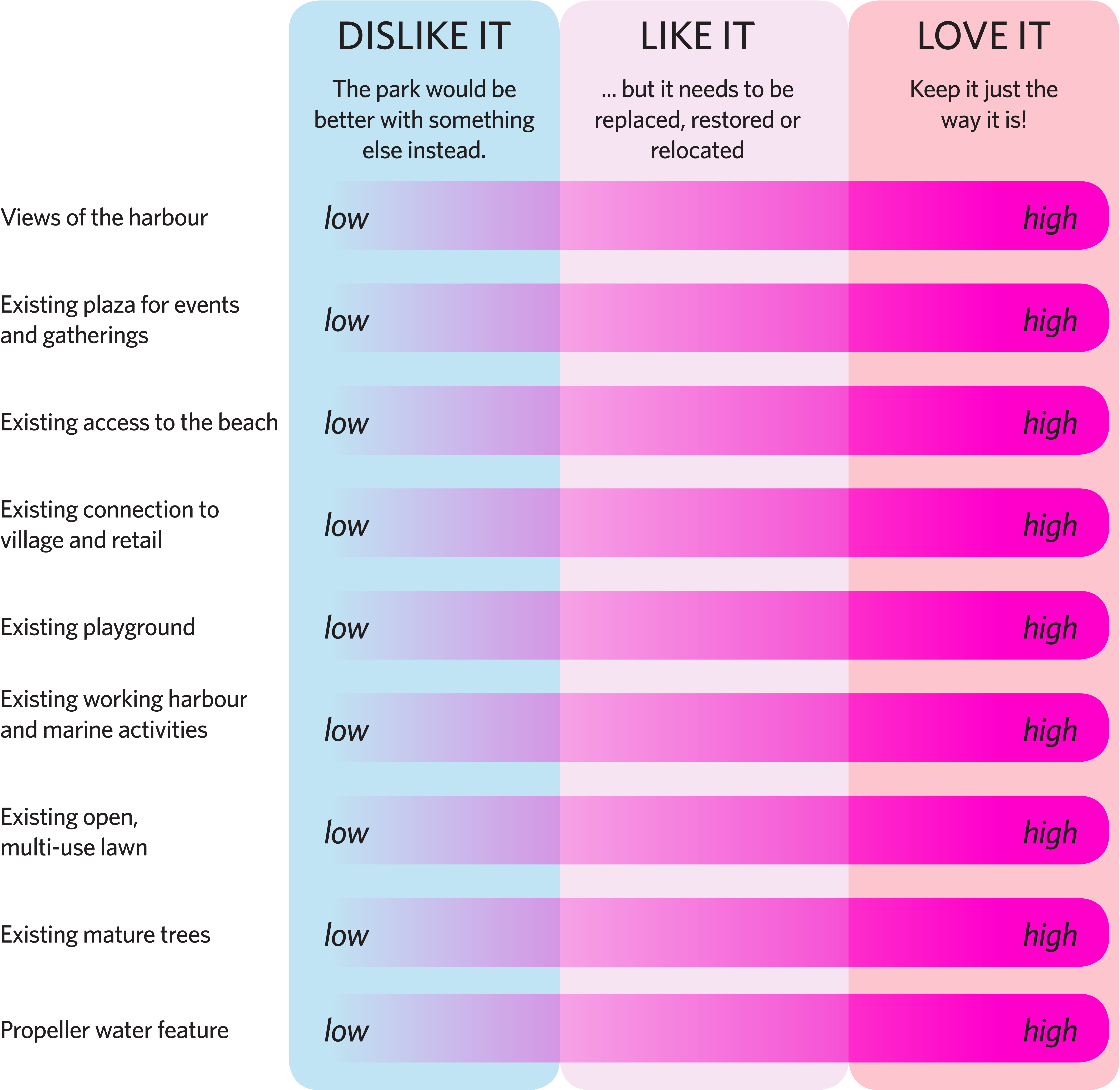
KEY OPPORTUNITIES





What makes this place great?

Please tell us what you love about the park now.





Don't forget...

lowhigh



Opportunities

Please tell us how much of a priority the following opportunities are.

	LOW PRIORITY	MID PRIORITY	HIGH PRIORITY
IMPROVE...			
Seawall improvement	Low		High
Spray park update	low		high
Improve marina parking lot	low		high
Washroom upgrade	low		high
ADD...			
Move / improve the lift station	low		high
Weather protection	low		high
Concerts and events	low		high
More seating	low		high
CREATE...			
Continuous, connected waterfront	low		high
Better connection to retail	low		high
A place for youth	low		high
A destination playground	low		high

I'd rather...

low

high



What could the park be?

Six themes

Through site analysis, a stakeholder workshop and consultant studies, we have identified six themes that we consider important to represent in Horseshoe Bay Park.

These themes will form a vision that sets the direction for further design work. We won't pick just one — the same space can express more than one theme.

Please tell us how strongly each concept resonates with you by adding a sticker to each, like so:



Or, add your own concepts below.

Next, check out the boards for each concept, and tell us which activities and features could best express it.

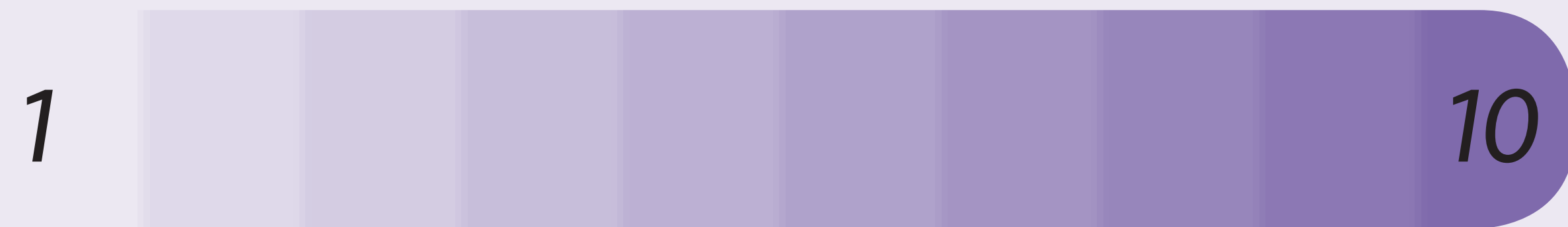
Village green

A local meeting spot for community members to visit daily. A place for special events and celebrations. Bring your family and dogs!



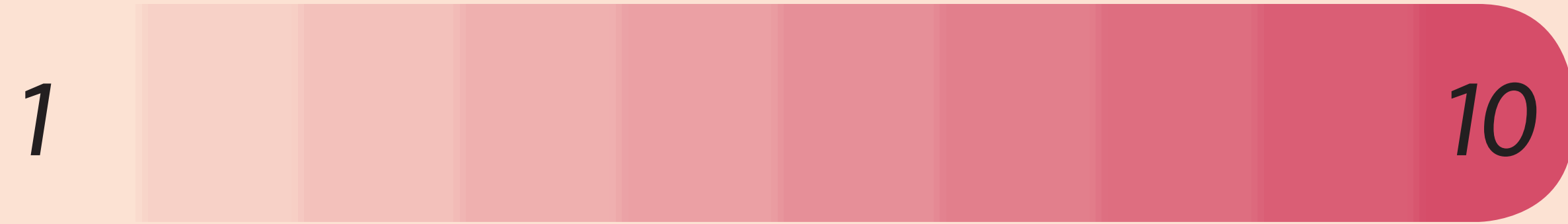
Active year-round

In colder months, this place has a charm all its own, whether it's a winter activity or its calm beauty. At night, the park still bustles with activity. Local businesses and the park support one another.



Unique destination

Located at a traveller's hub, this place offers something memorable. With rarely-seen installations, themed events or just its own inherent charm, people visit from all over.



Relax and enjoy

Making the most of the natural setting, the park can facilitate a sense of serenity and refreshment, especially for stressed ferry travellers.



Thriving ecology

Building a framework upon which natural processes can thrive and be resilient, this park allows visitors to get a glimpse of BC flora, fauna, and marine life.



By the water

Located on a beautiful bay, there are many ways the park can be designed to express the ocean. A working waterfront, a marine habitat, a historic harbour village.



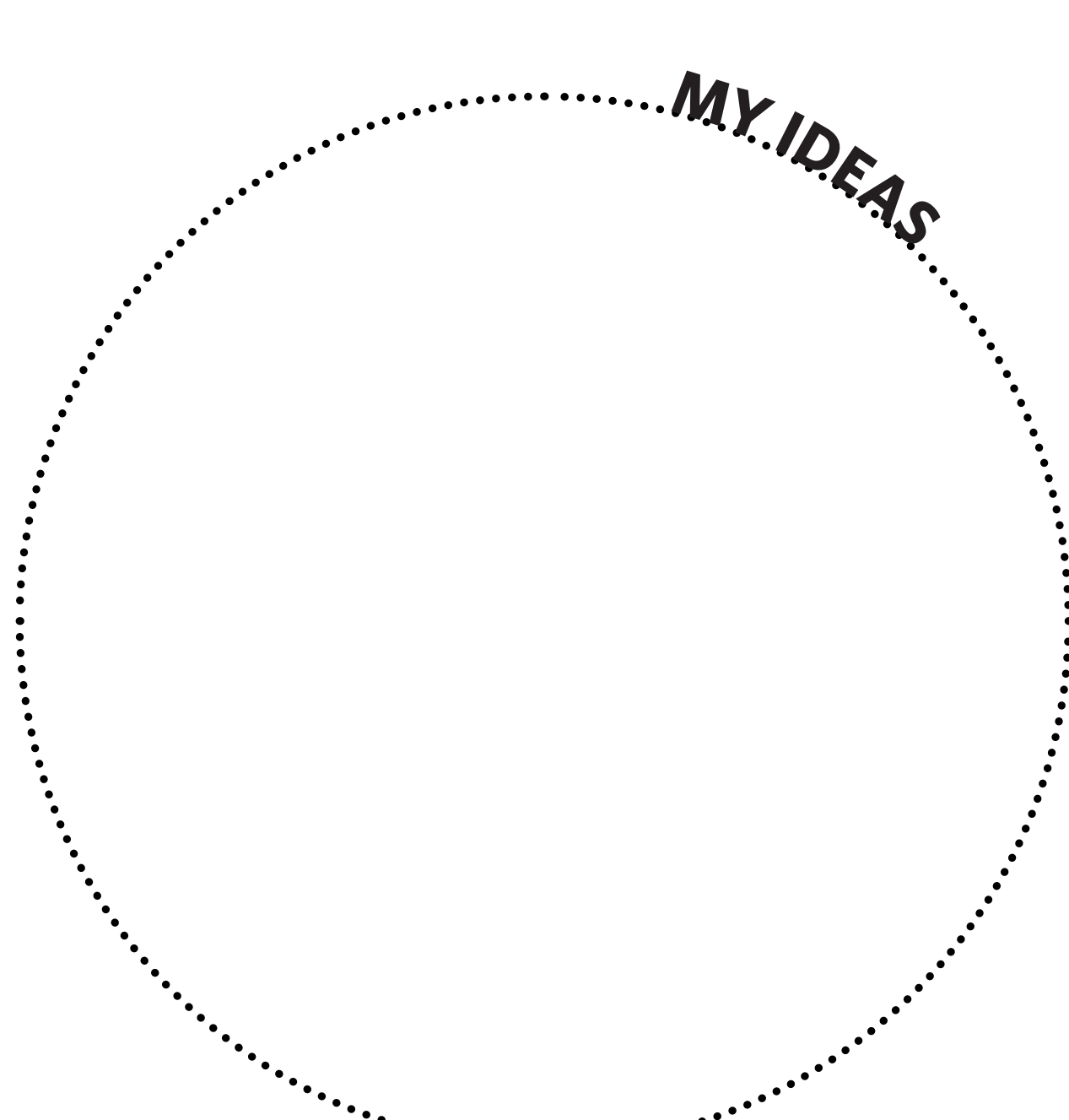
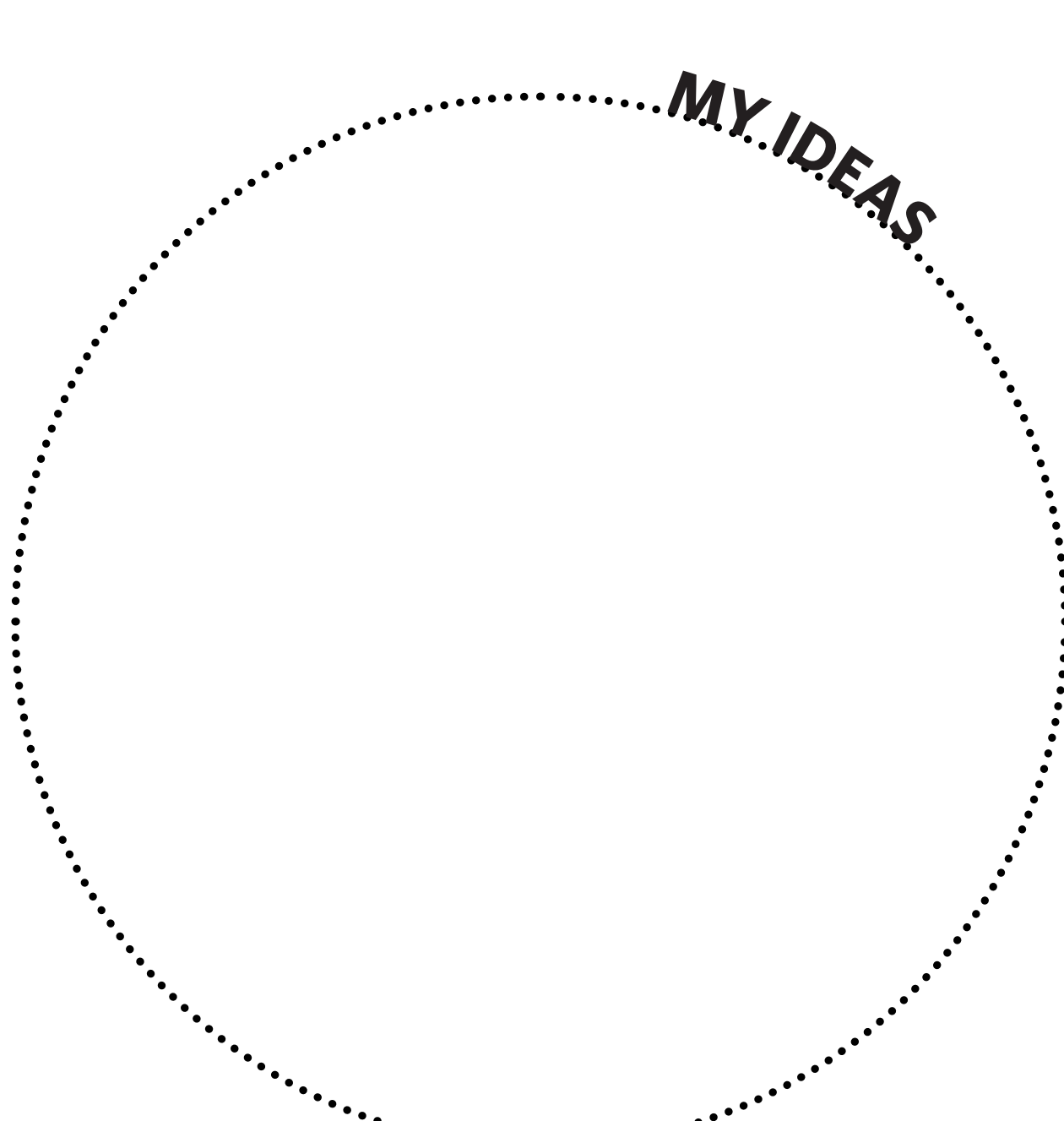
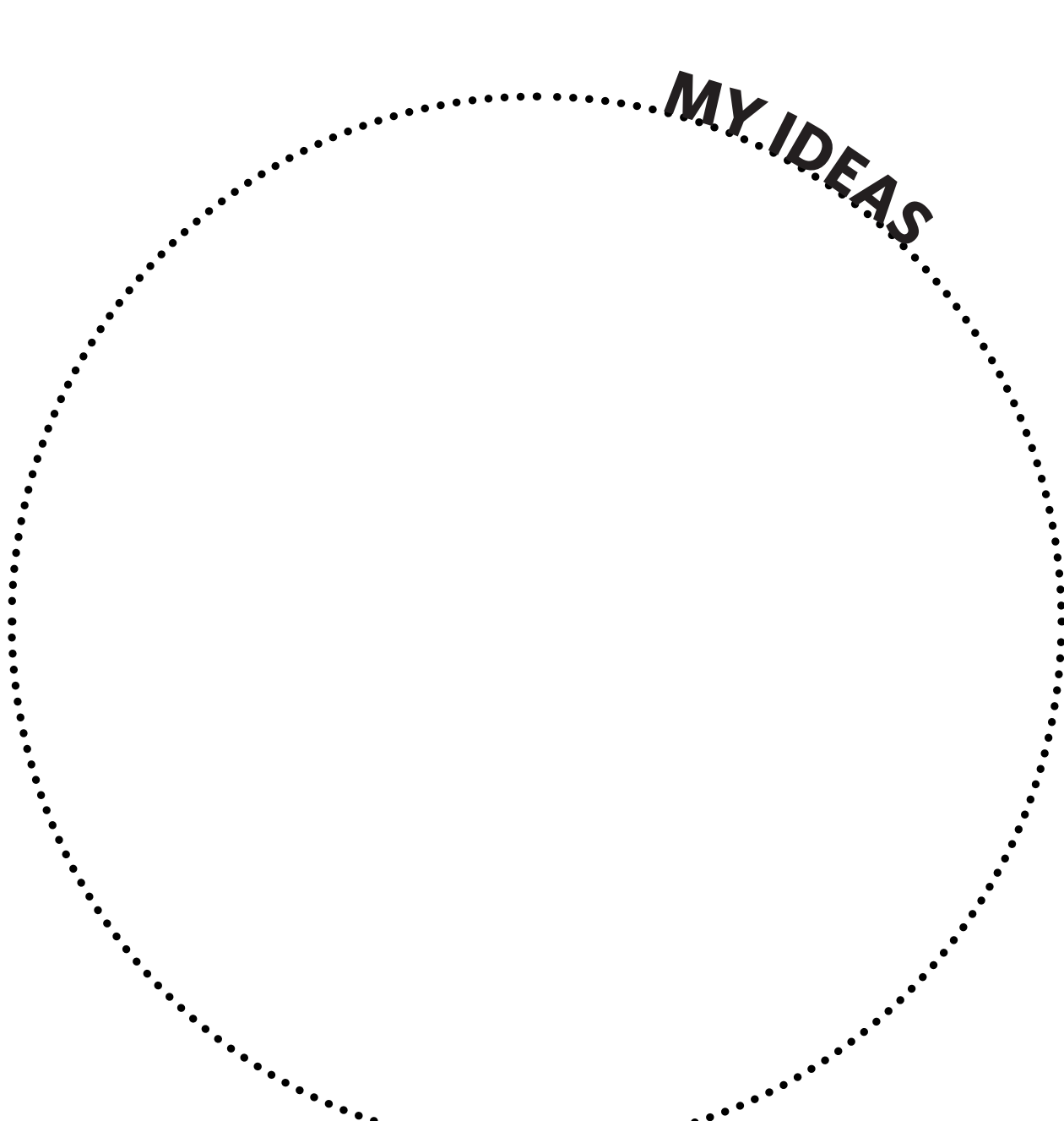
I'd rather...





Village green

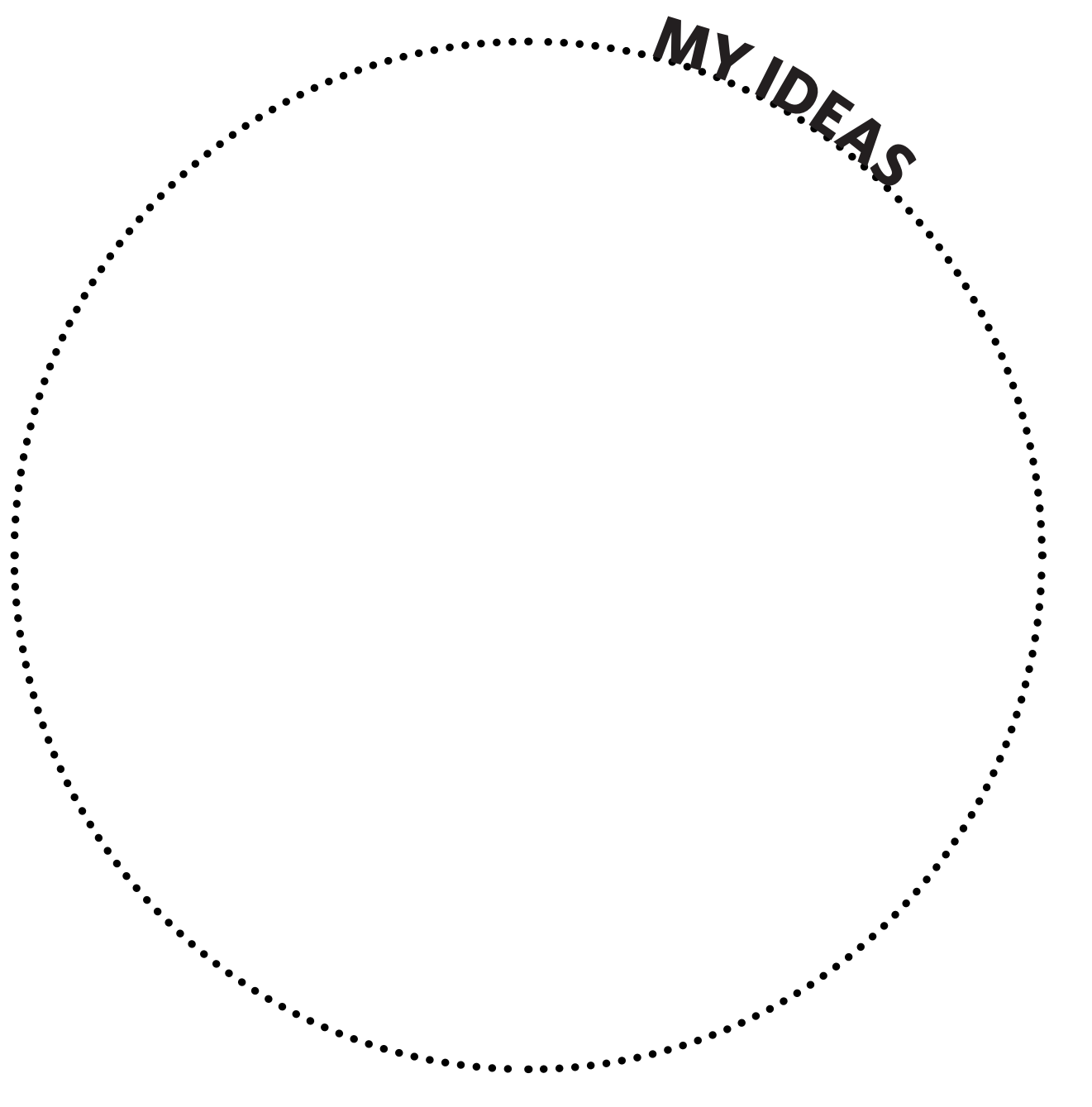
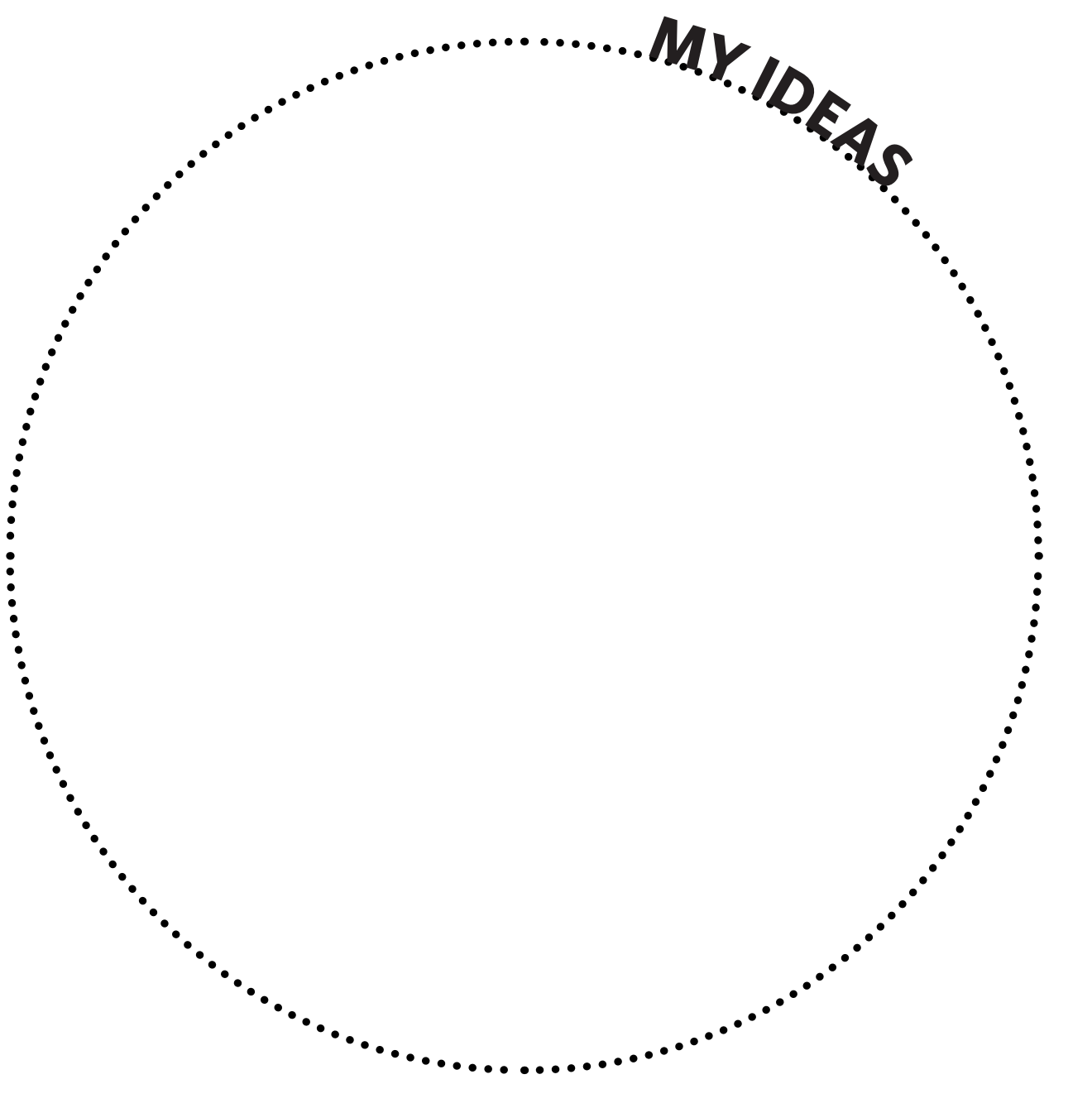
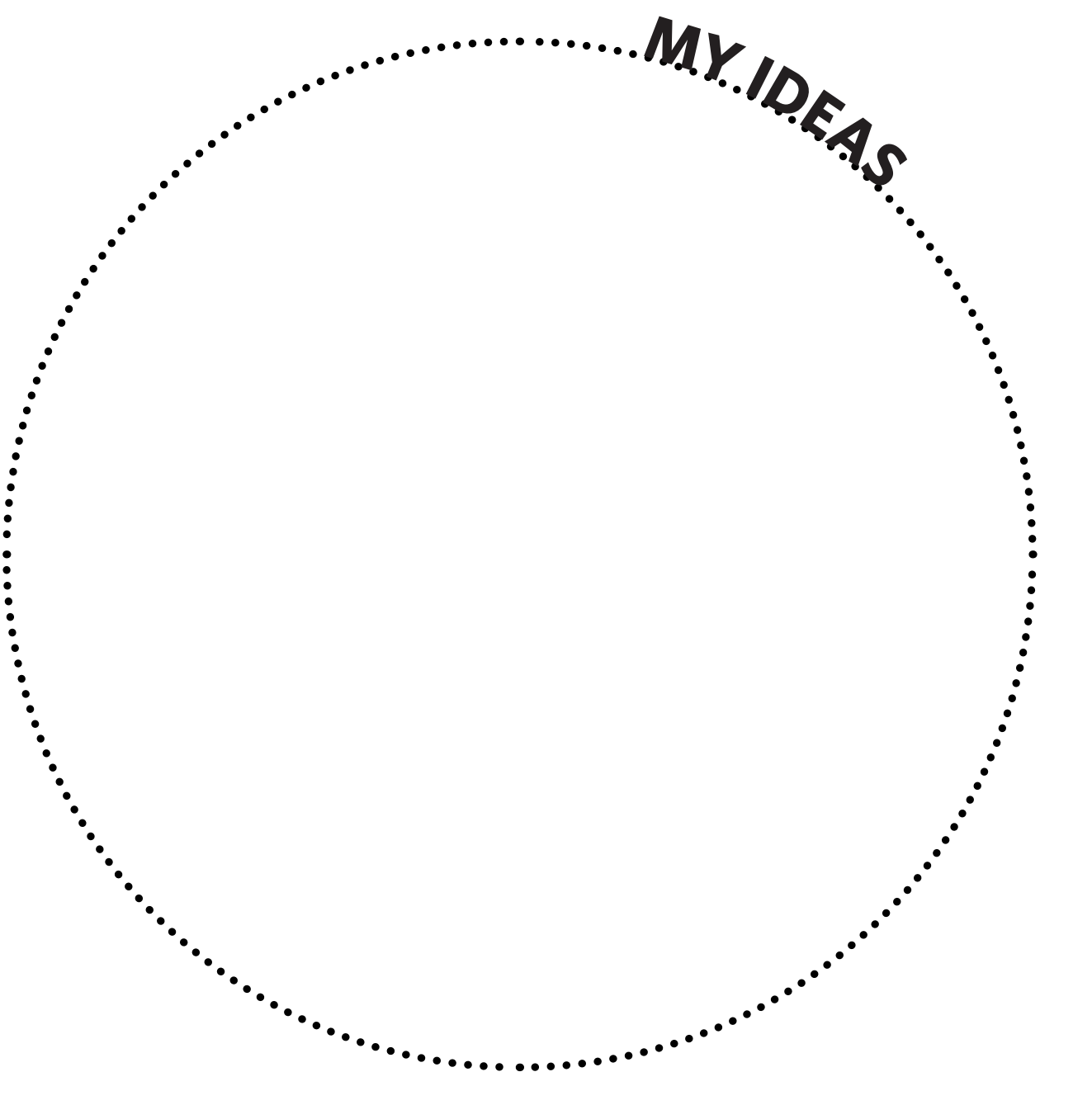
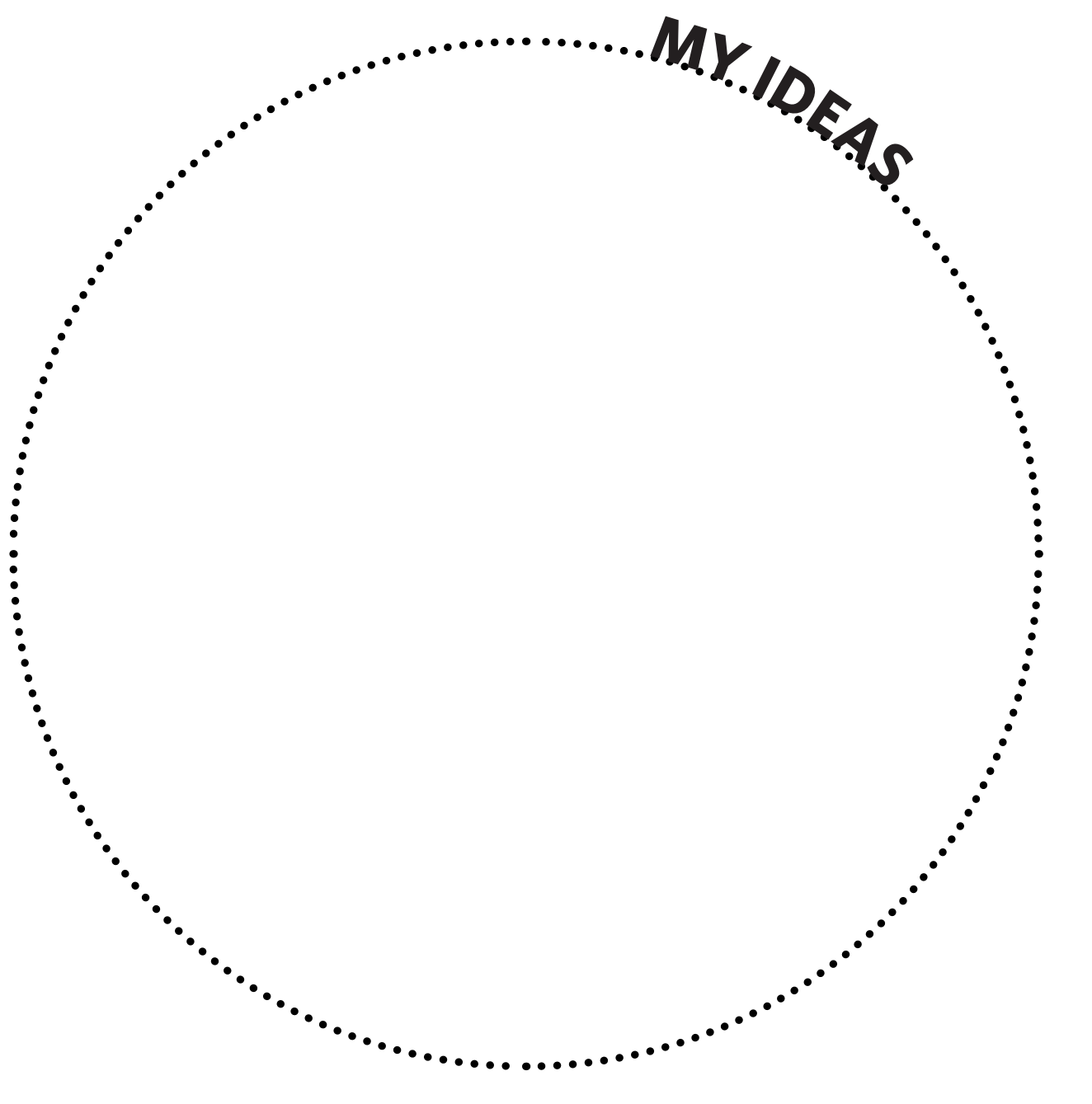
Please place a sticky dot on the circle around the three ideas you would most like to see in Horseshoe Bay Park.





Active year-round

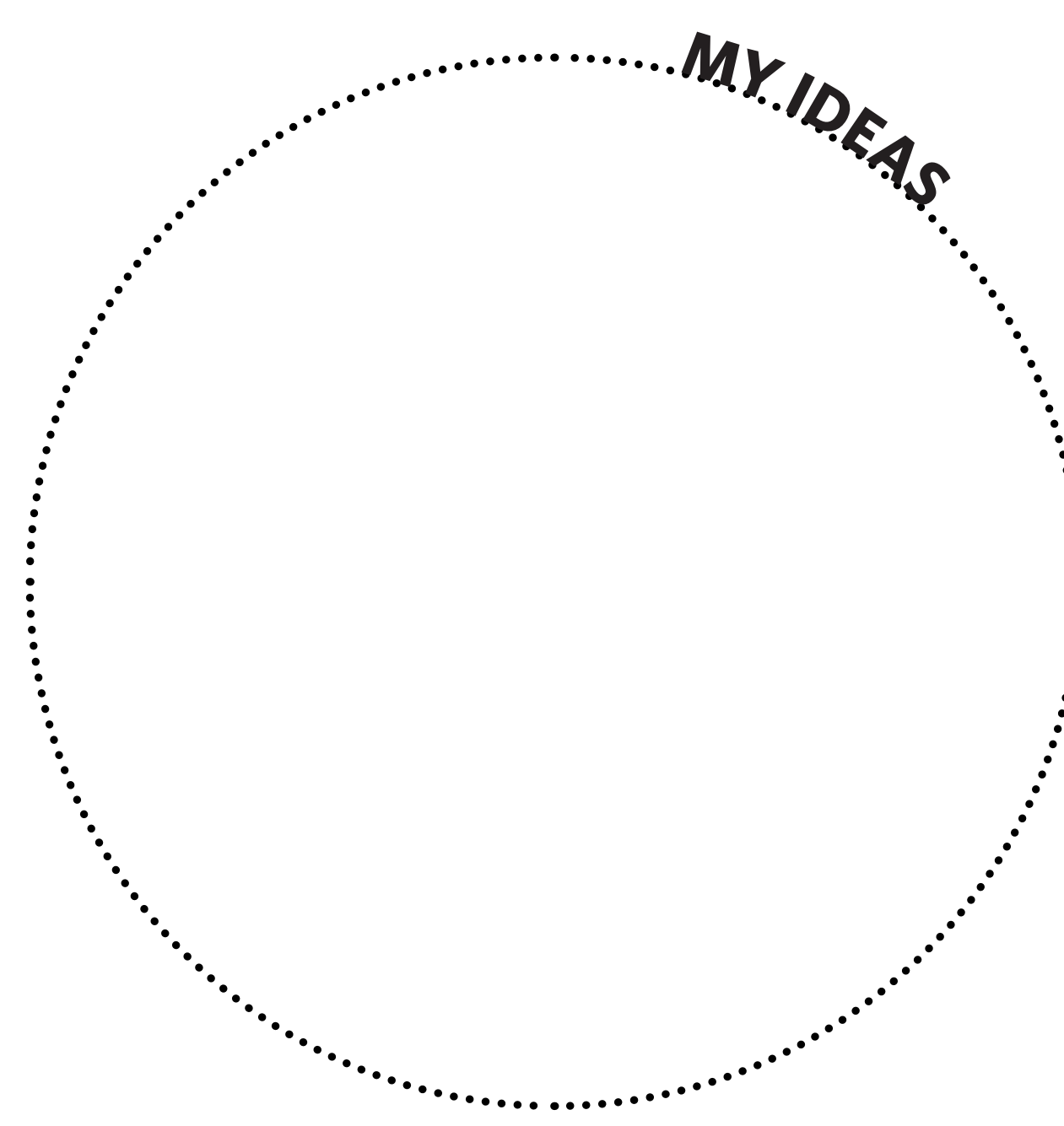
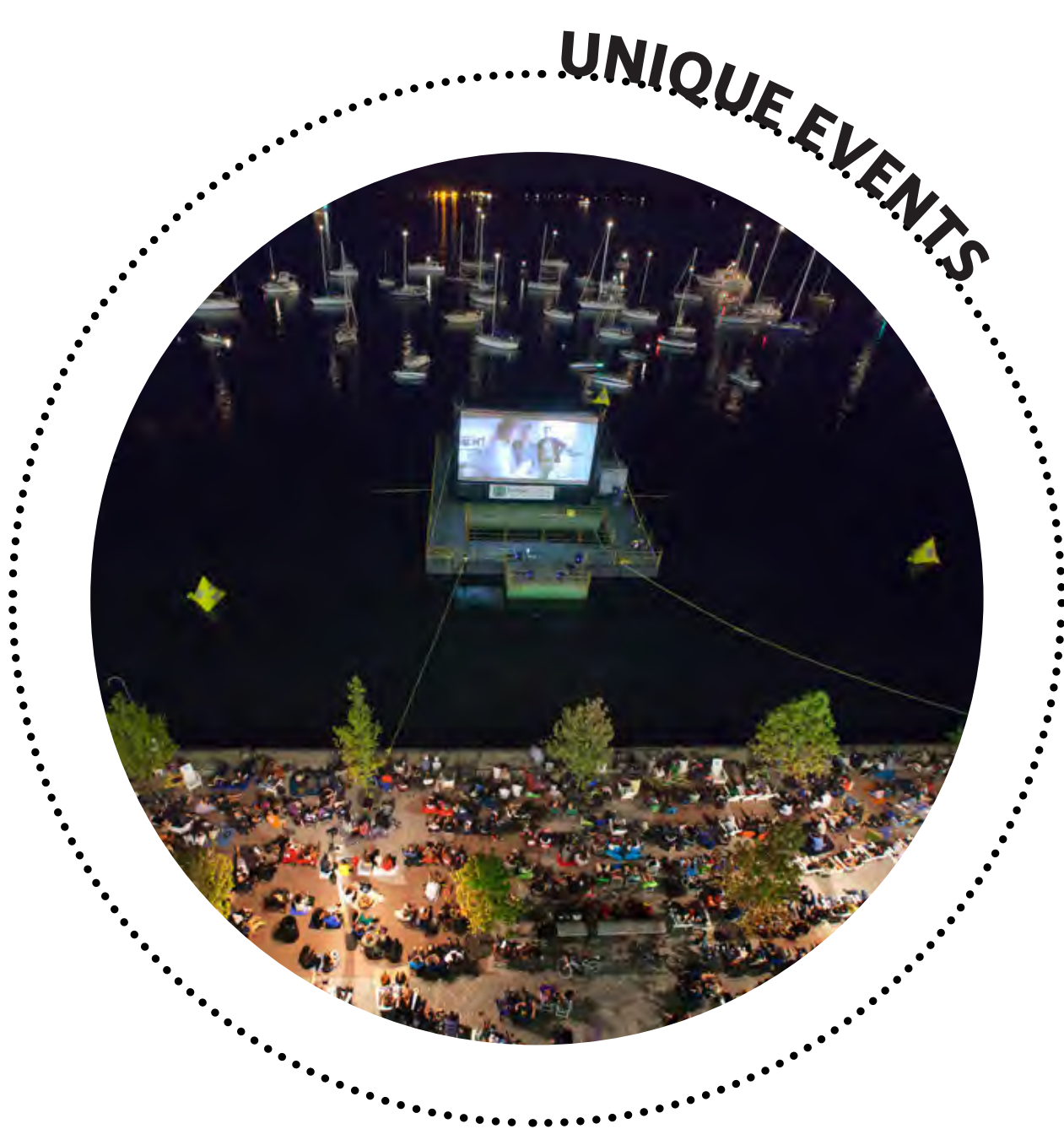
Please place a sticky dot on the circle around the three ideas you would most like to see in Horseshoe Bay Park.





A unique destination

Please place a sticky dot on the circle around the three ideas you would most like to see in Horseshoe Bay Park.

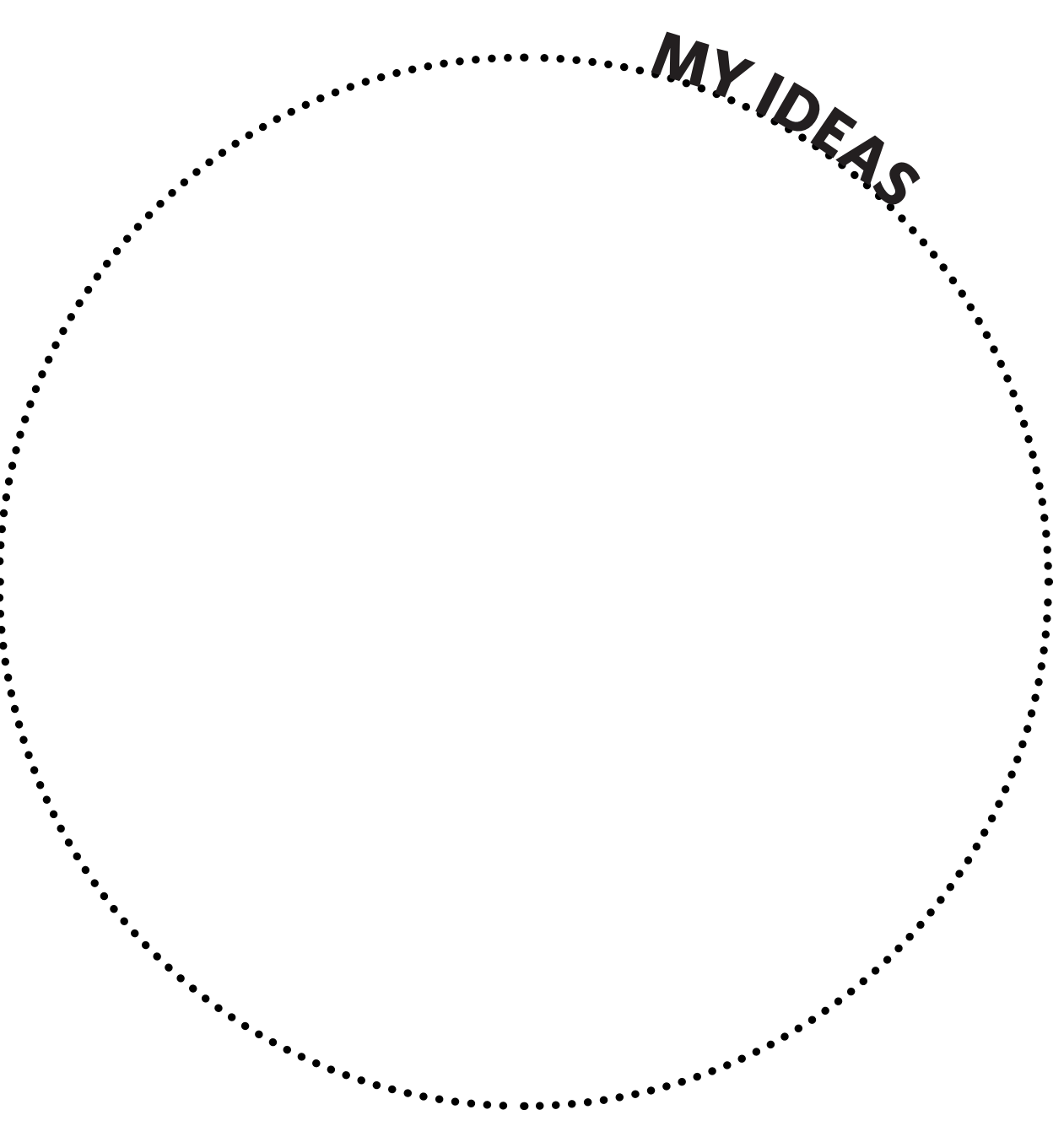
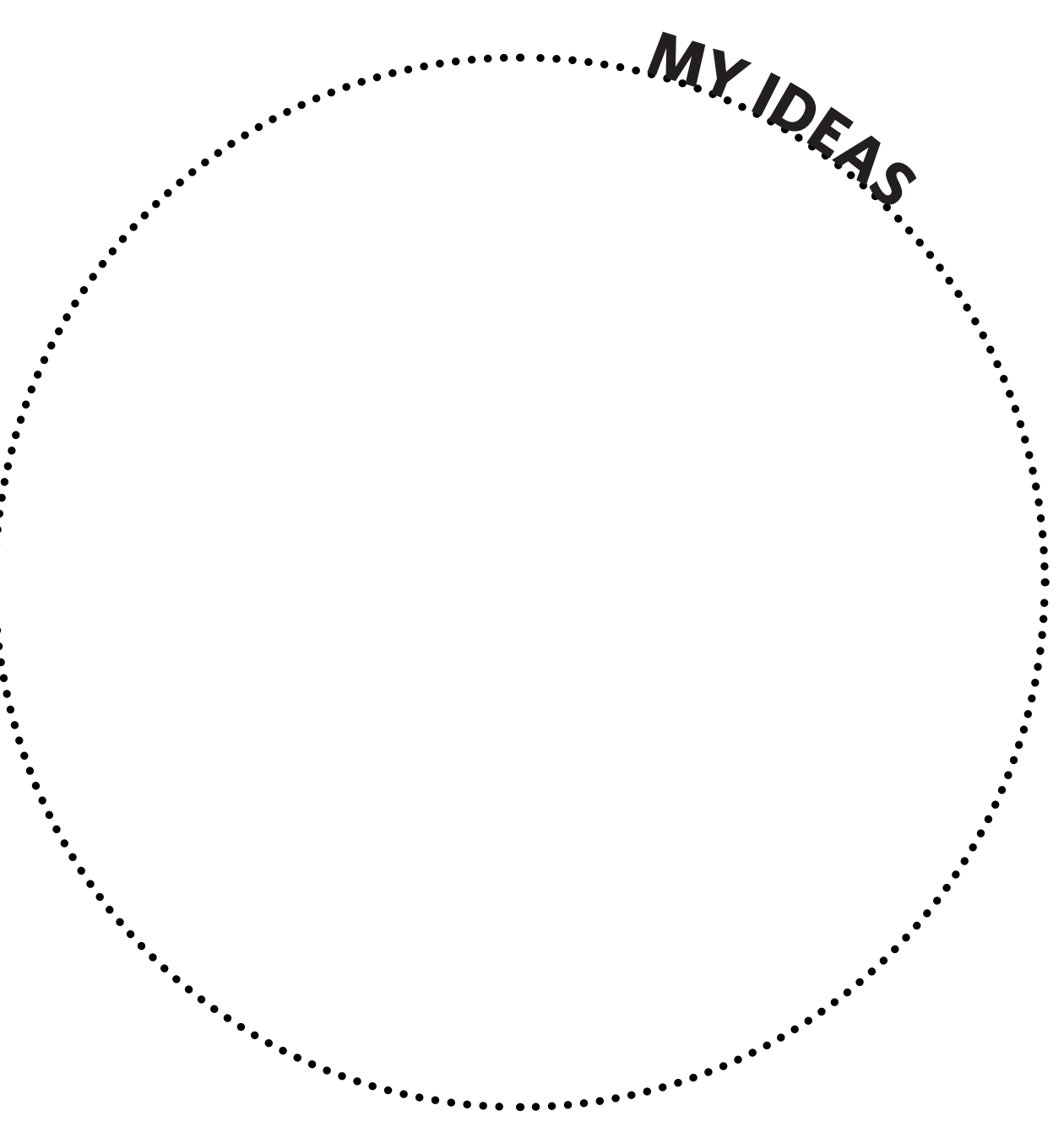
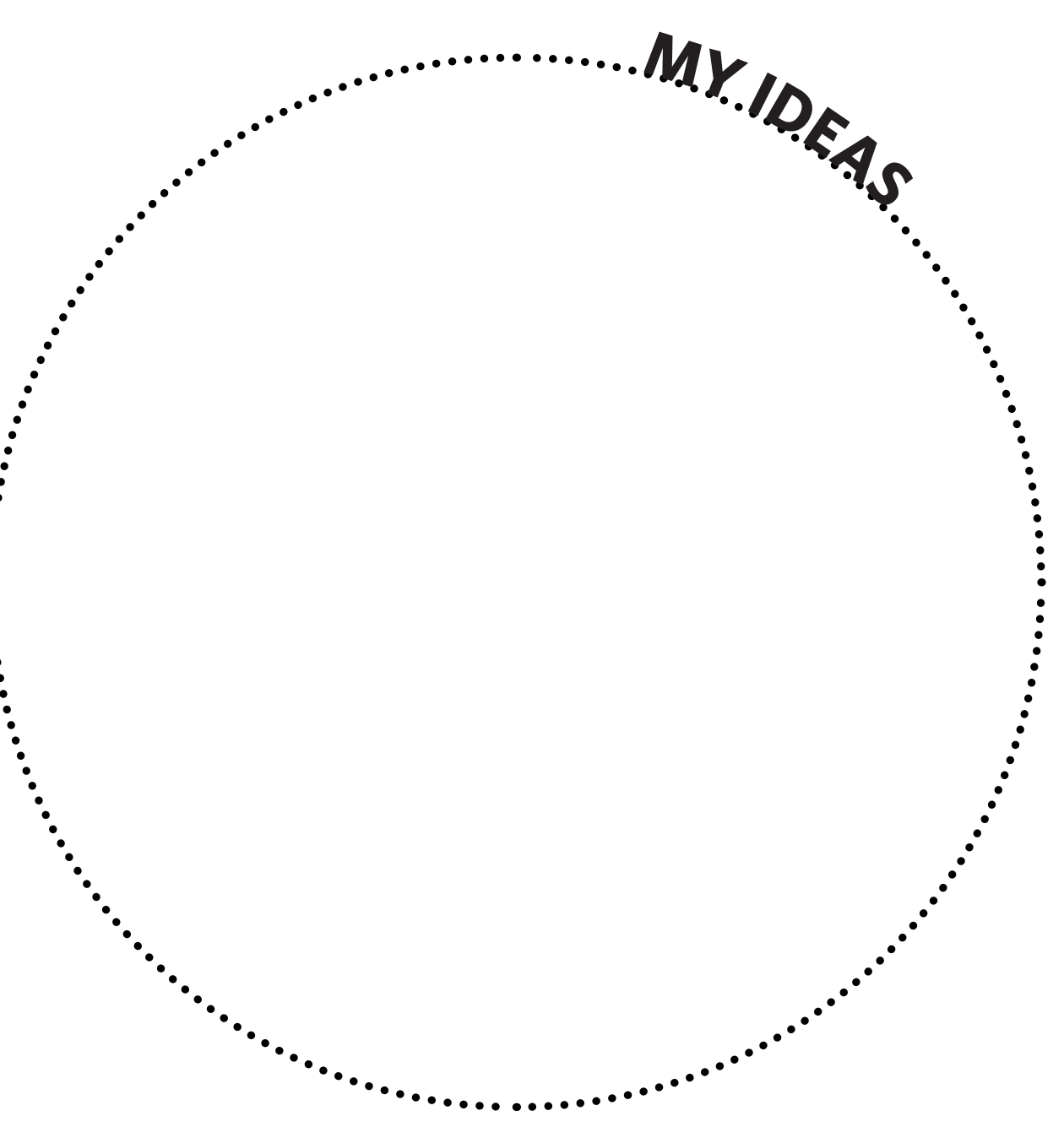




HORSESHOE BAY PARK

Relax and enjoy

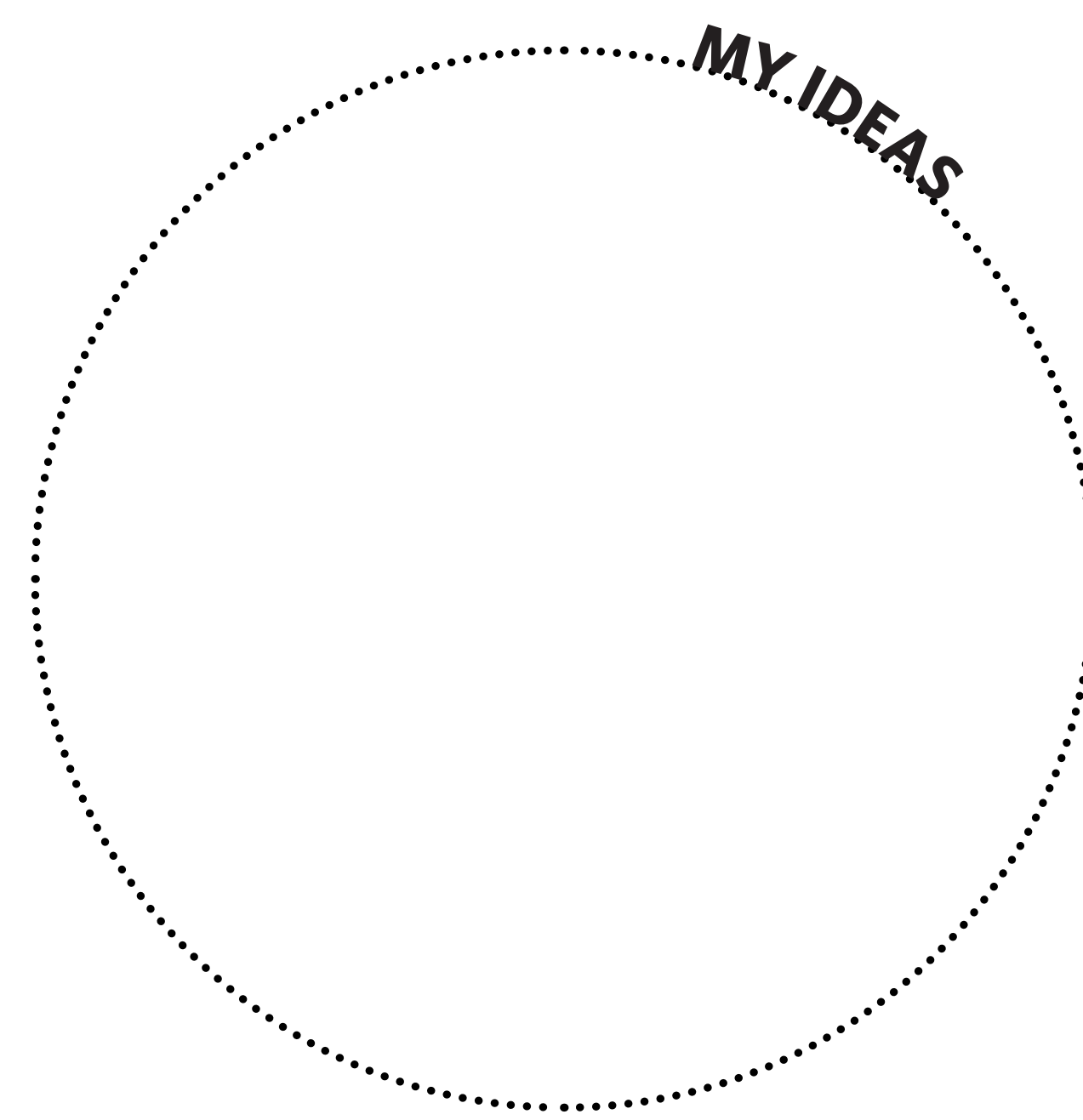
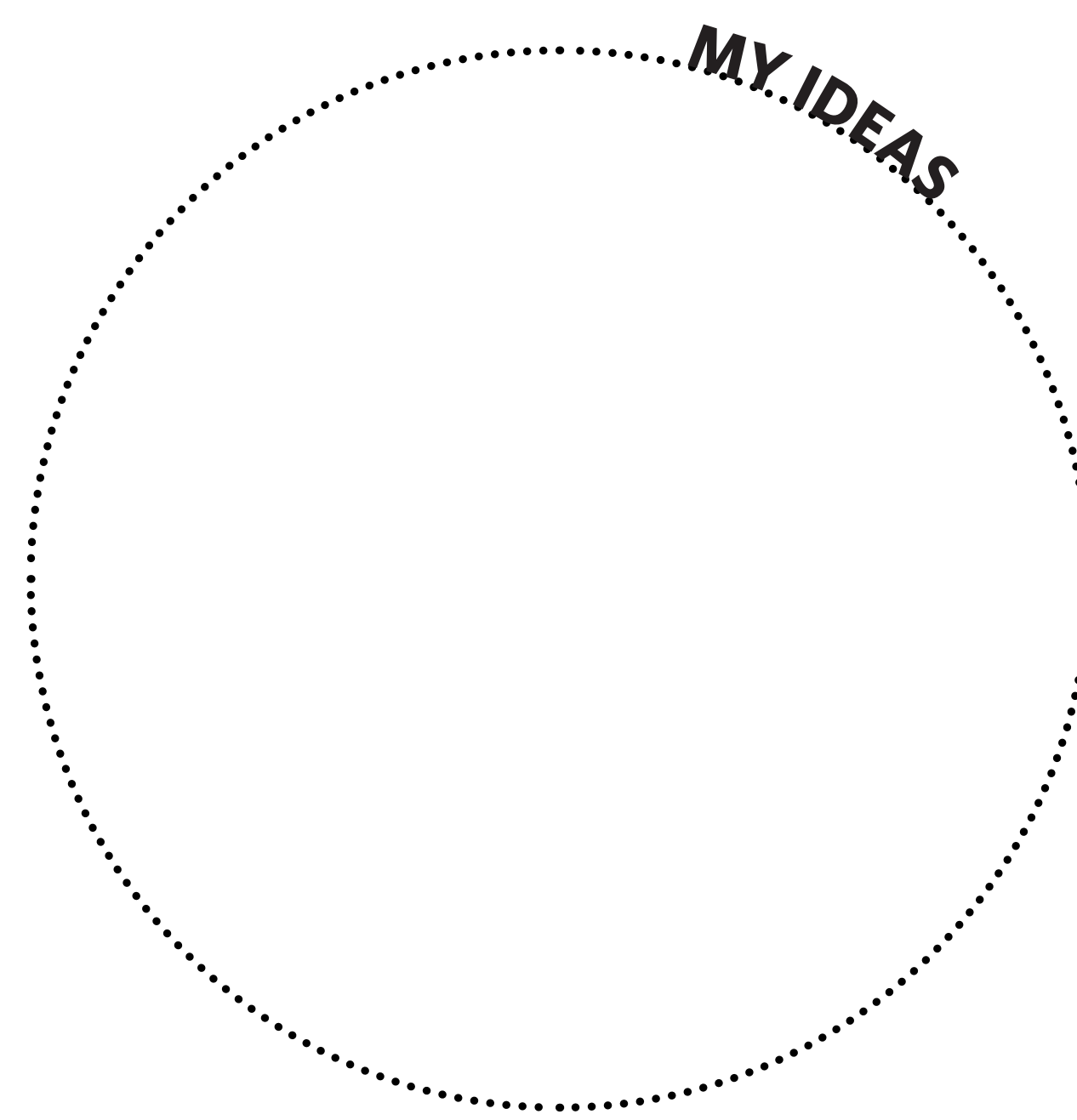
Please place a sticky dot on the circle around the three ideas you would most like to see in Horseshoe Bay Park.





Thriving ecology

Please place a sticky dot on the circle around the three ideas you would most like to see in Horseshoe Bay Park.

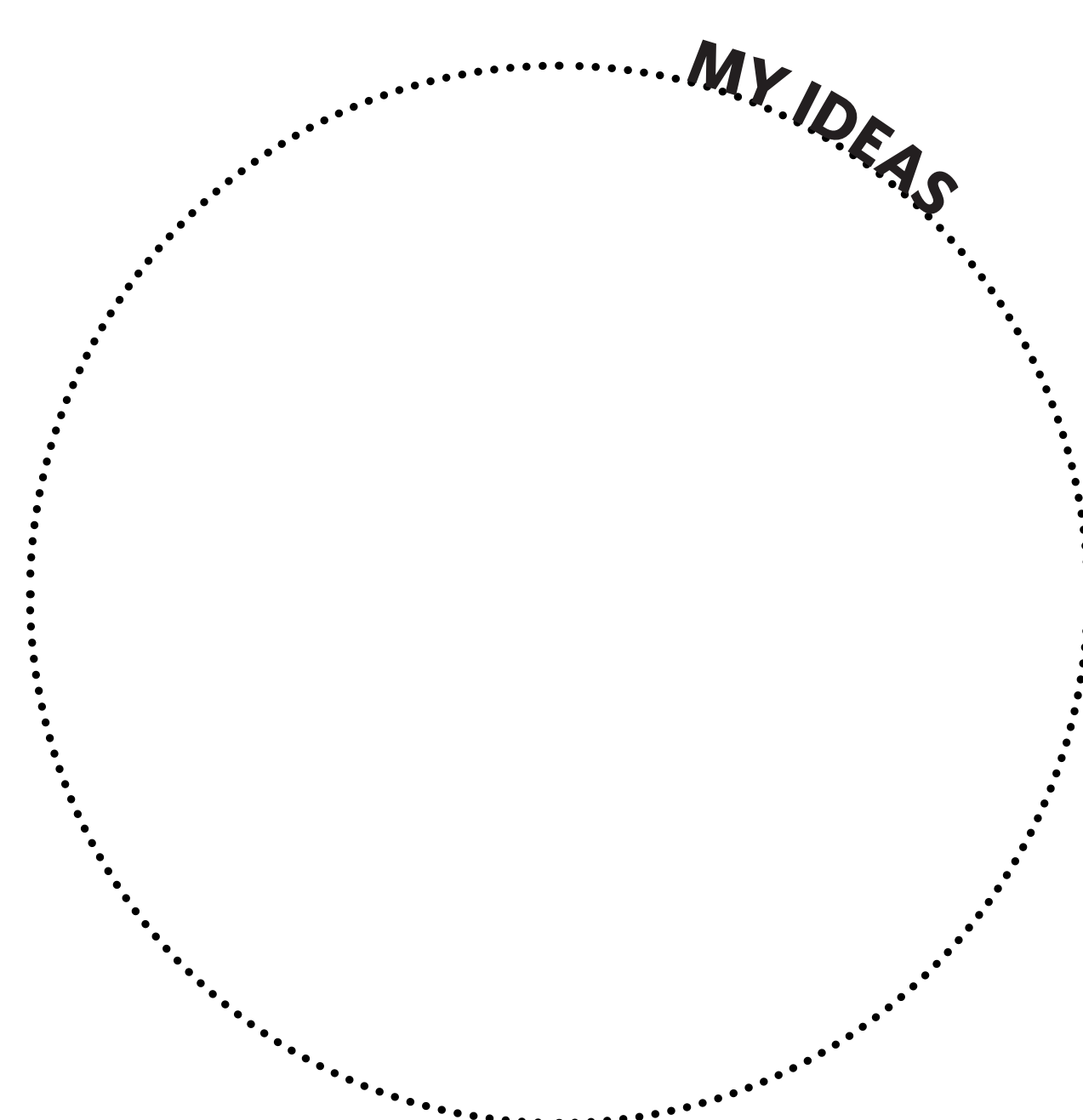
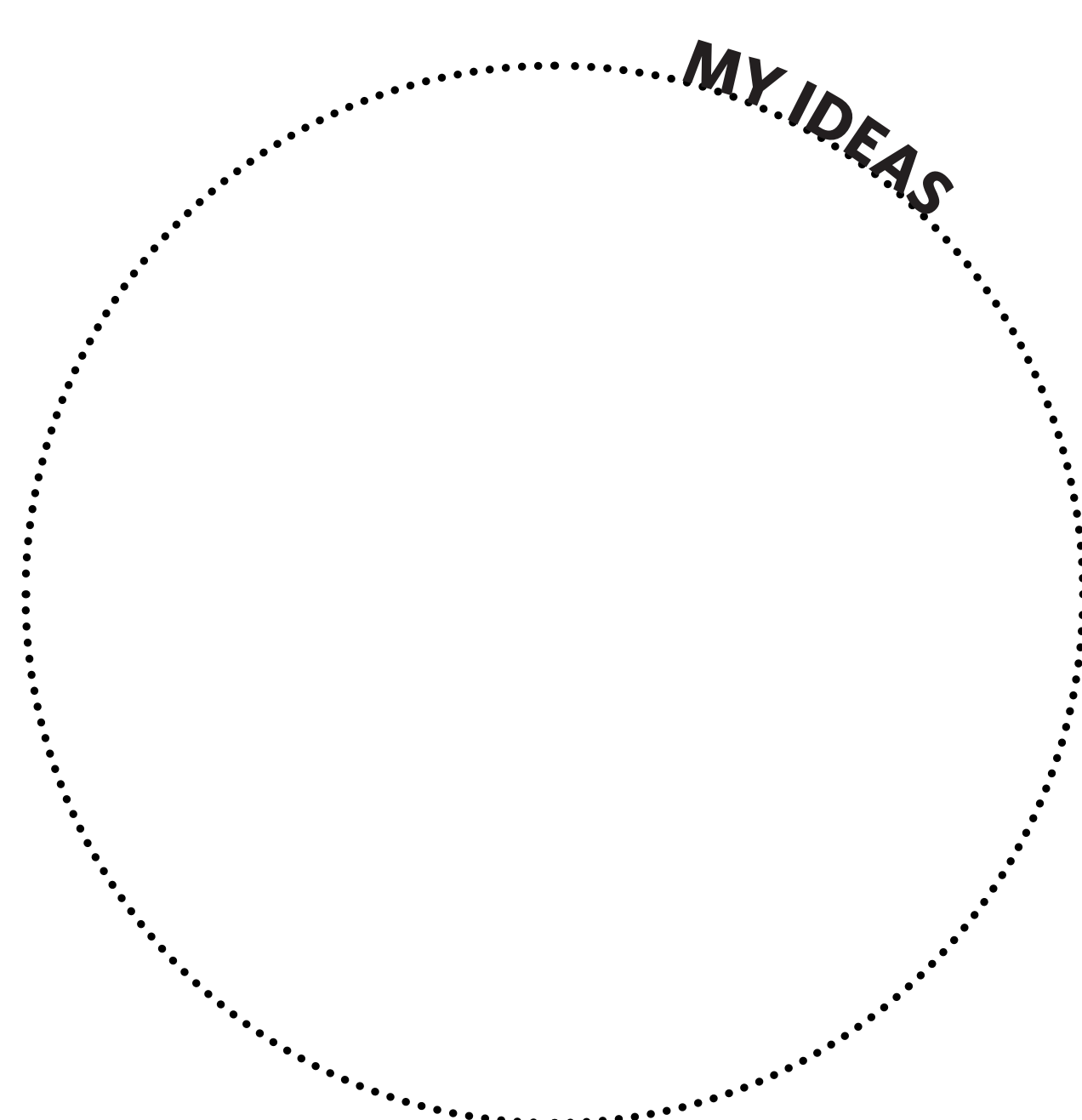
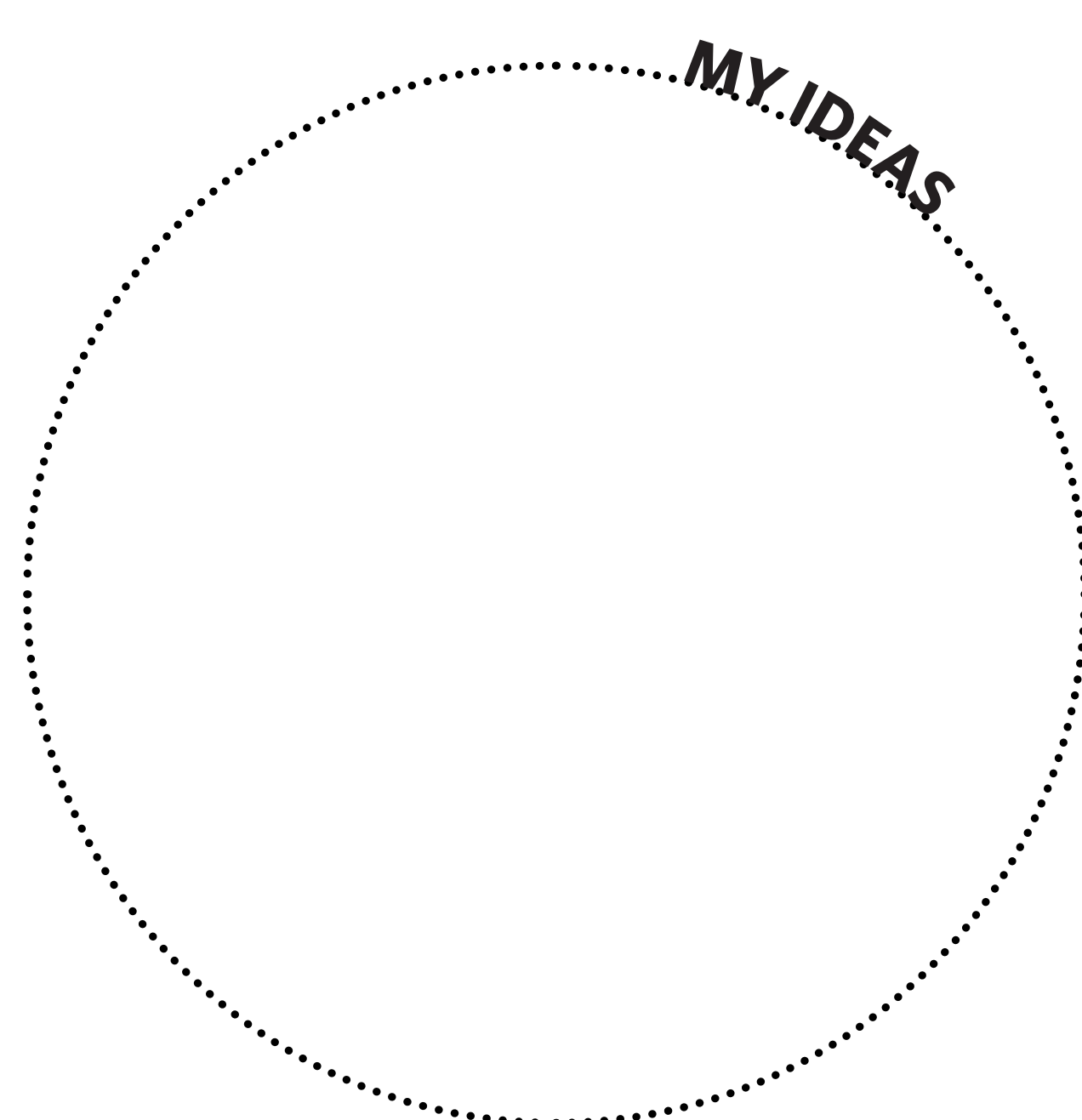
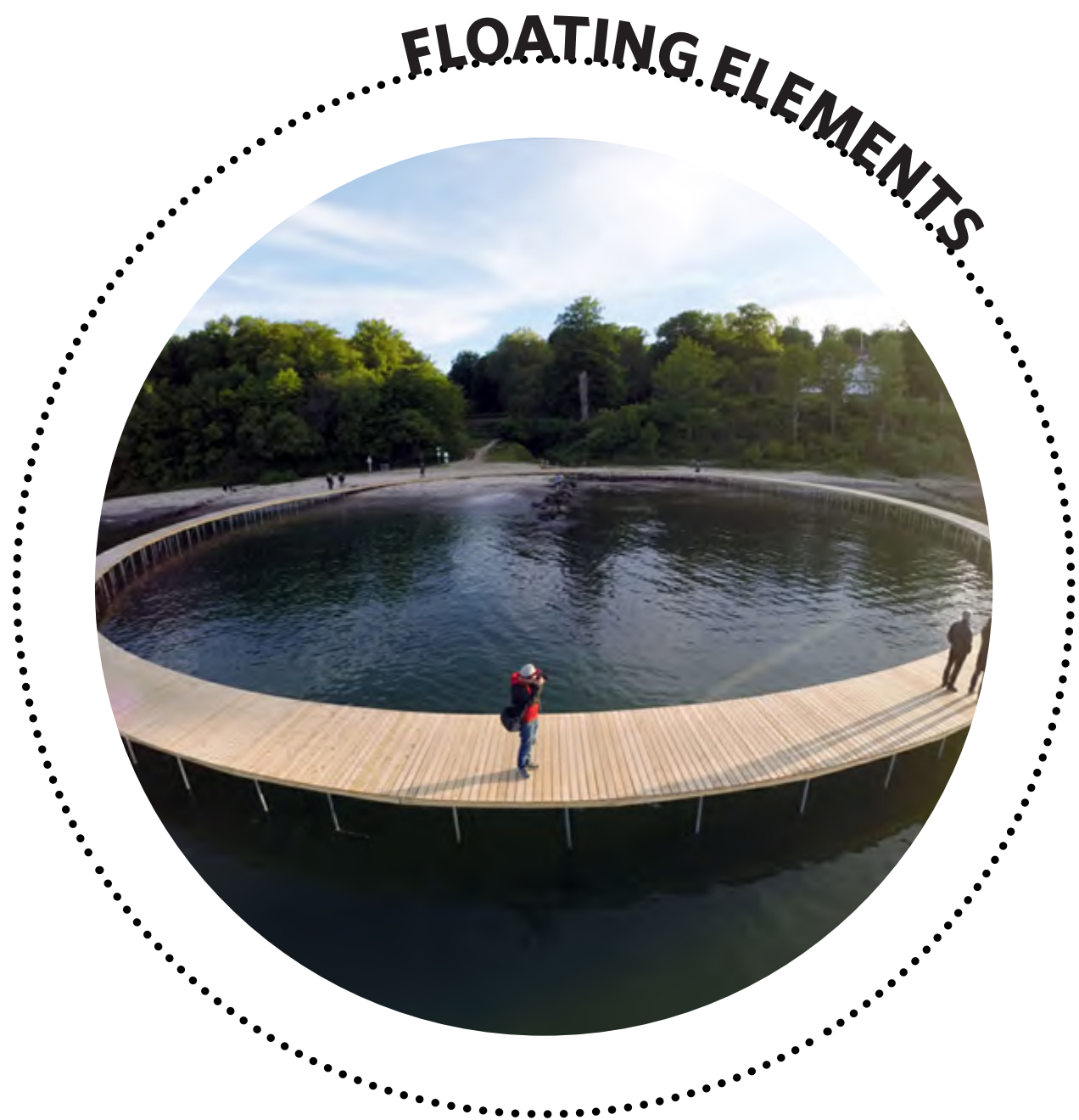




HORSESHOE BAY PARK

By the water

Please place a sticky dot on the circle around the three ideas you would most like to see in Horseshoe Bay Park.





HORSESHOE BAY PARK

Mark the map

Please use the icon stickers to indicate where you think the best location for those features should be.



If your ideas aren't on the stickers, use a sticky note!

