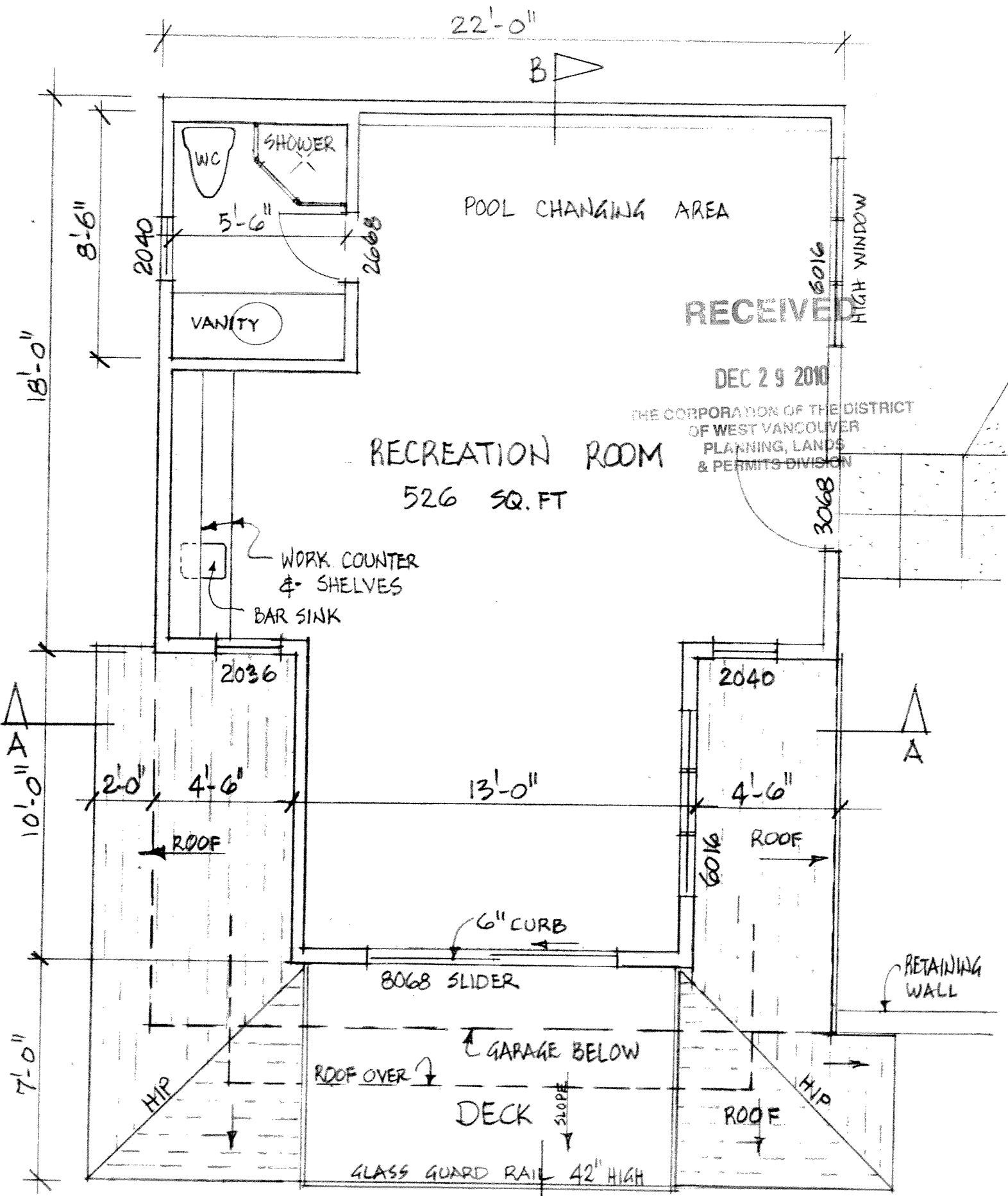


RECEIVED

DEC 29 2010

THE CORPORATION OF THE DISTRICT
OF WEST VANCOUVER
PLANNING, LANDS
& PERMITS DIVISION

LOWER FLOOR PLAN 1/4" = 1'-0"

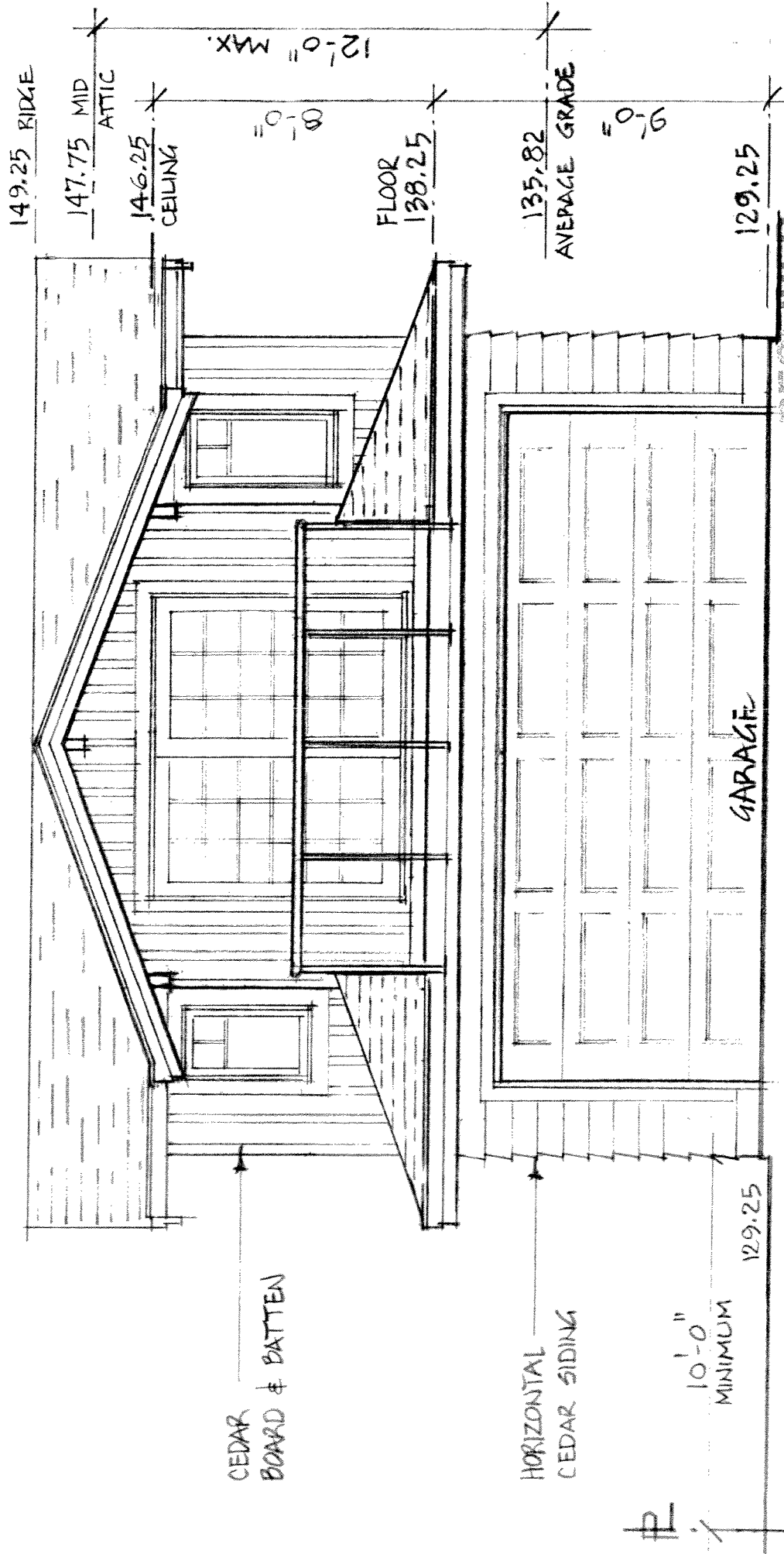


RECEIVED

DEC 29 2010

THE CORPORATION OF THE DISTRICT
OF WEST VANCOUVER
PLANNING, LANDS
& PERMITS DIVISION

UPPER FLOOR PLAN $\frac{1}{4}'' = 1'-0''$

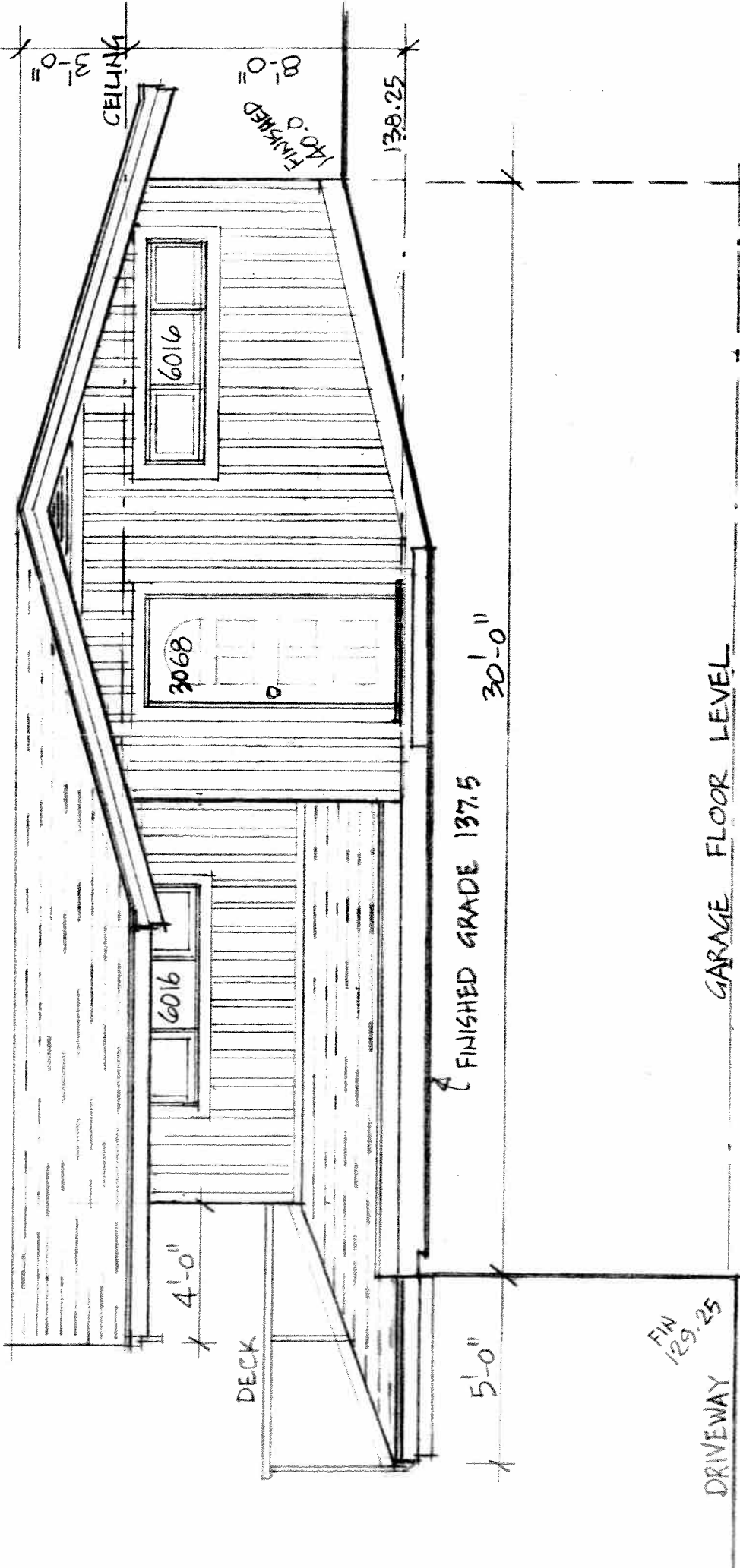


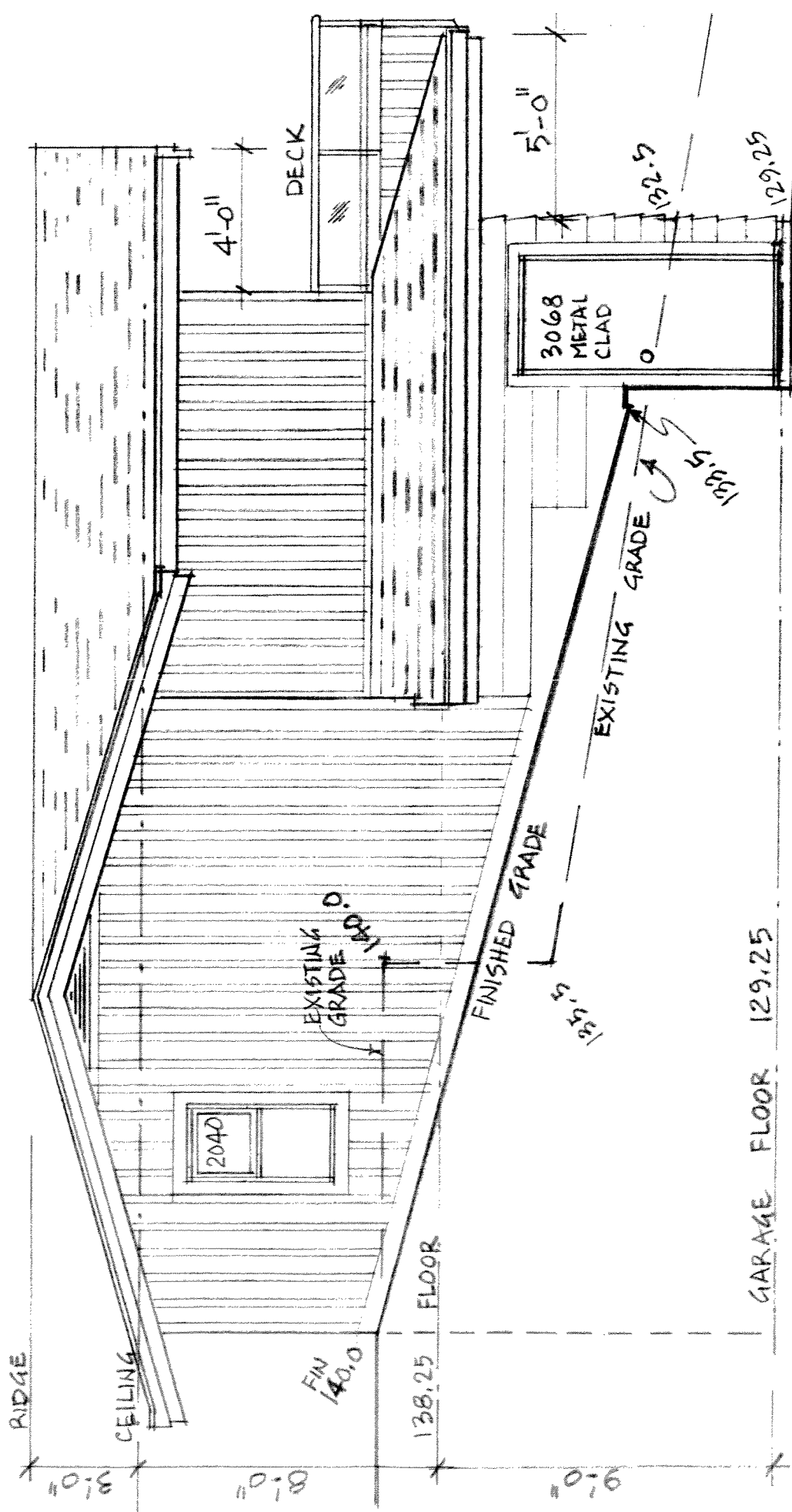
SOUTH ELEVATION

1/4" = 1'-0"

DEC 29 2010

CITY CORPORATION OF THE DISTRICT
OF WEST VANCOUVER
PLANNING, LANDS
& PERMITS DIVISION





RECEIVED

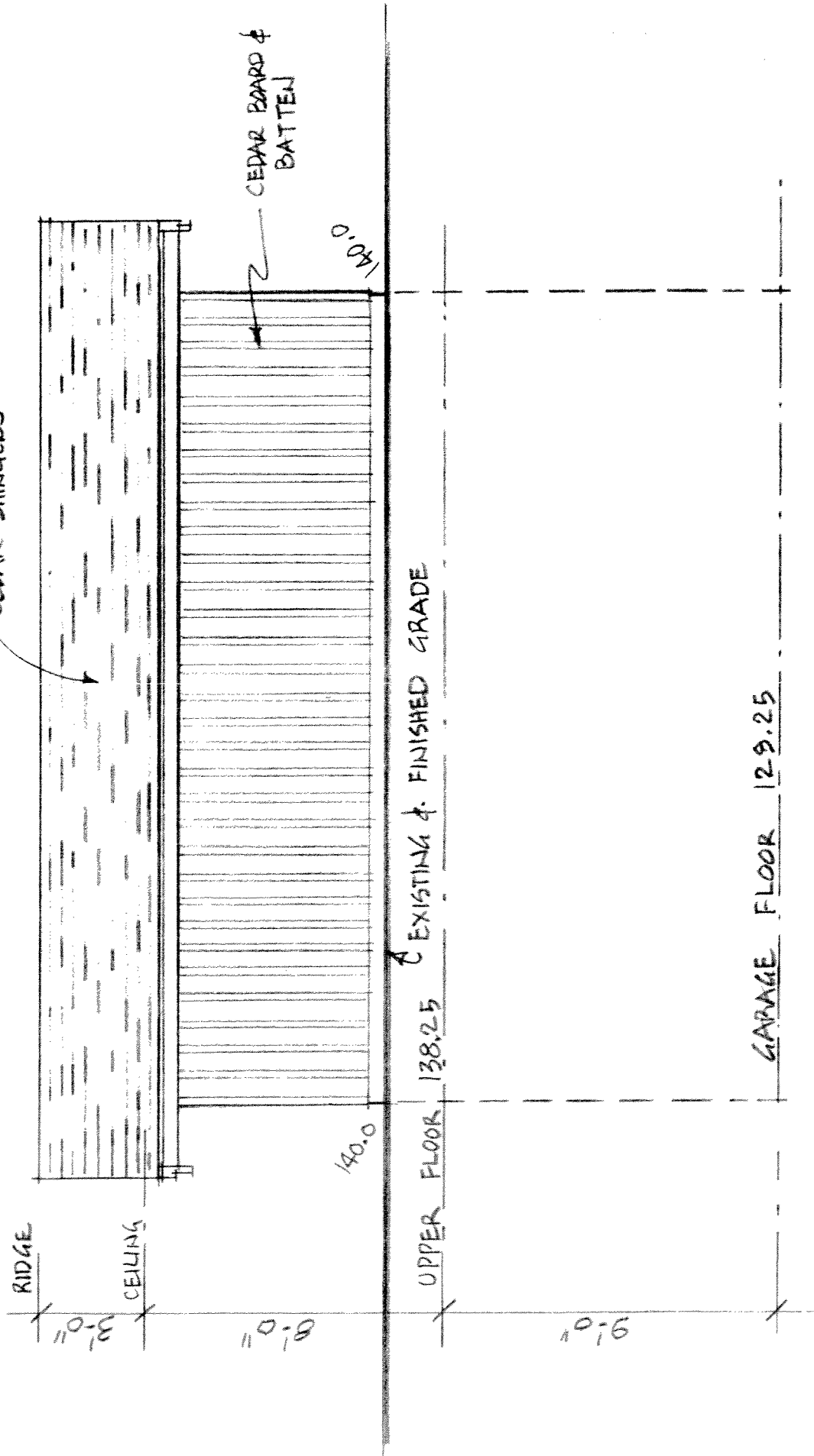
DEC 29 2010

THE CORPORATION OF THE DISTRICT
OF WEST VANCOUVER
PLANNING, LANDS
& PERMITS DIVISION

WEST ELEVATION

1/4" = 1'-0"

CEDAR SHINGLES



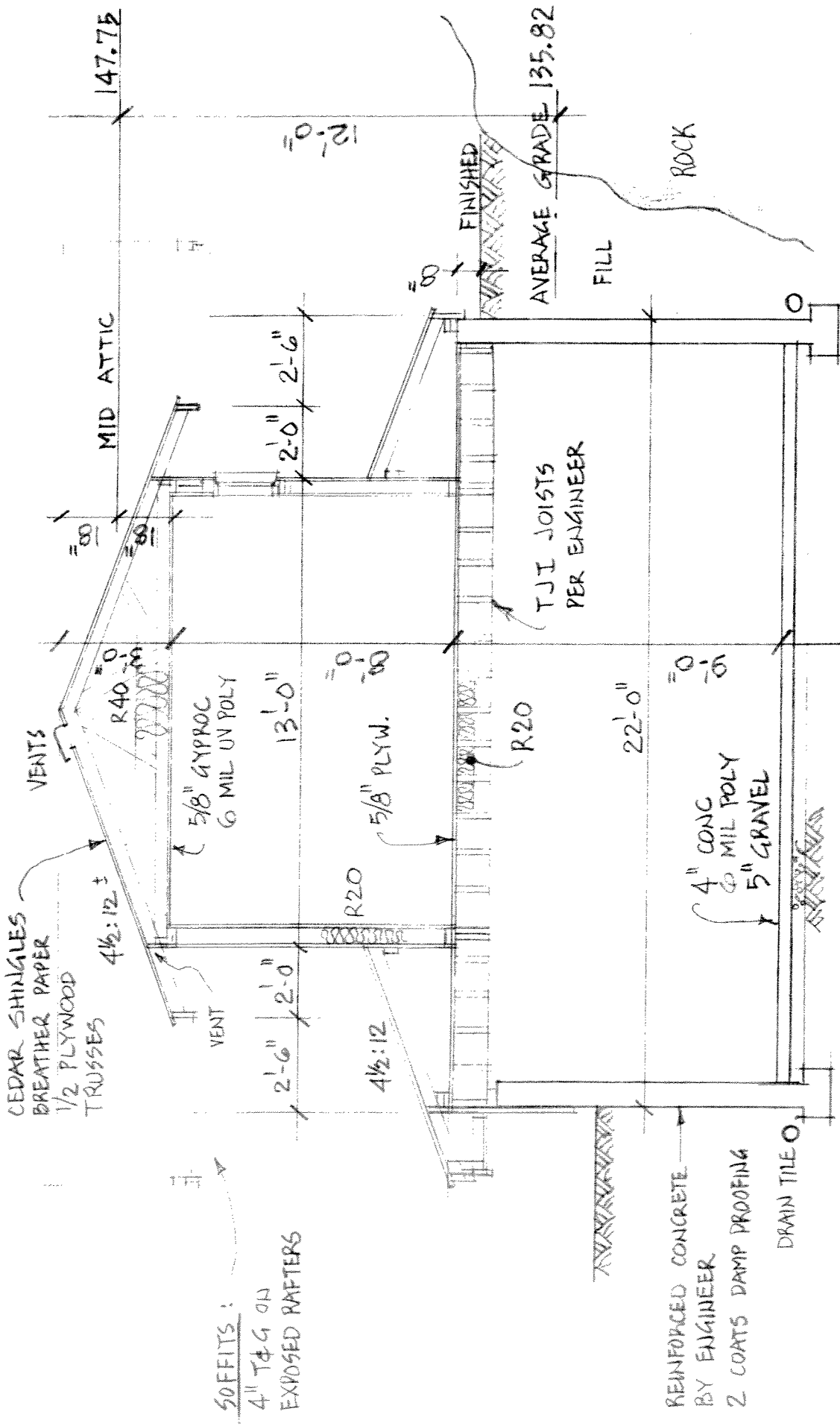
RECEIVED

DEC 29 2010

THE CORPORATION OF THE DISTRICT
OF WEST VANCOUVER
PLANNING, LANDS
& PERMITS DIVISION

NORTH (REAR) ELEVATION

1/4" = 1'-0"



RECEIVED

DEC 29 2010

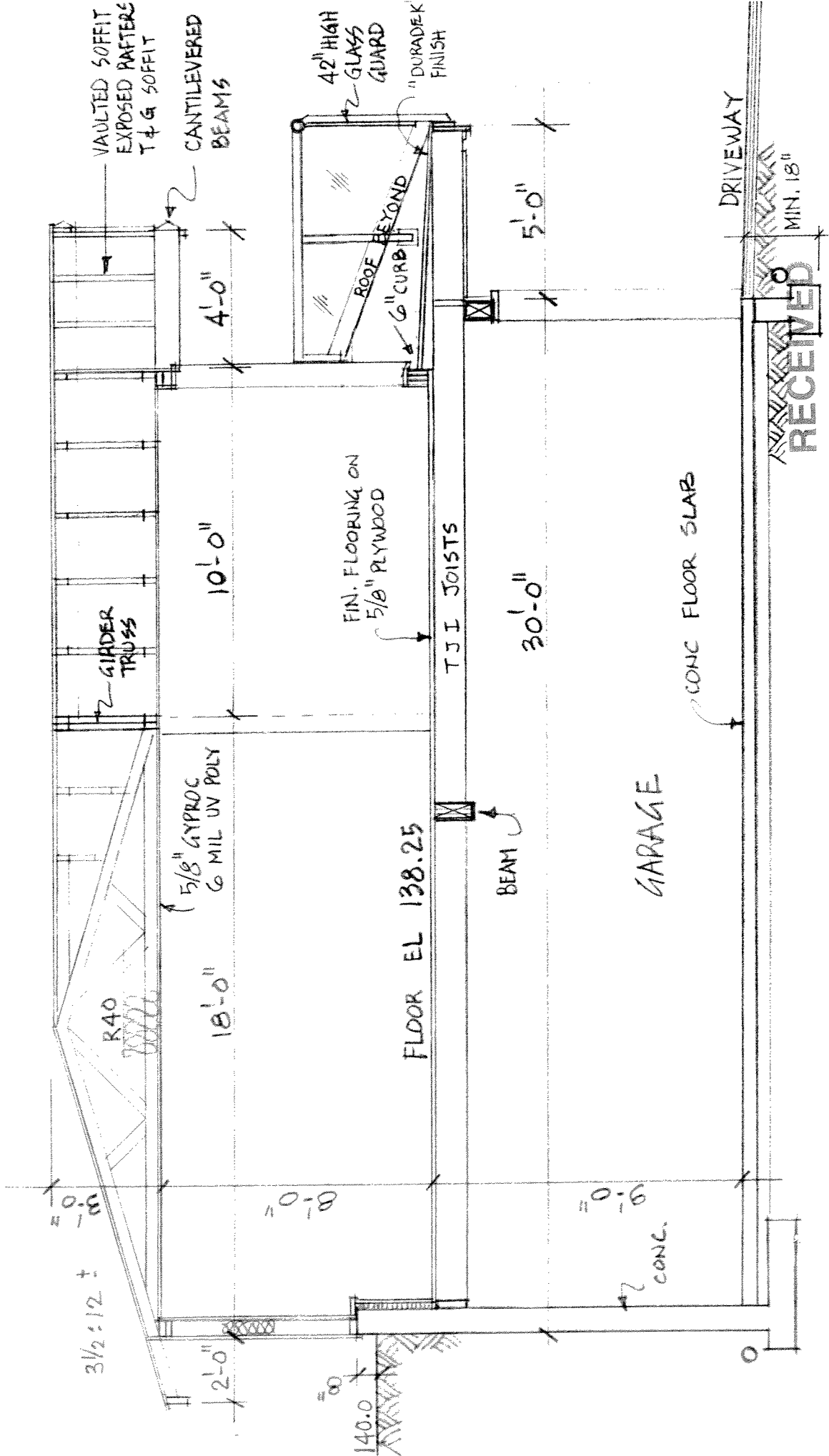
THE CORPORATION OF THE DISTRICT
 OF WEST VANCOUVER
 PLANNING, LANDS
 & PERMITS DIVISION

SECTION A - A

1/4" = 1'-0"

TYPICAL EXTERIOR STUD WALL:

- CEDAR BOARD & BATTEN
- 2 LAYERS 30 MINUTE PAPER
- 1/2" PLYWOOD
- 2" x 6" STUDS @ 16" O.C.
- R20 BATT INSULATION
- 6 MIL UV POLY
- 1/2" GYPROC.



SECTION B-B
 1/4" = 1'-0"

DEC 29 2010
 THE CORPORATION OF THE DISTRICT
 OF WEST VANCOUVER
 PLANNING, LANDS
 & PERMITS DIVISION