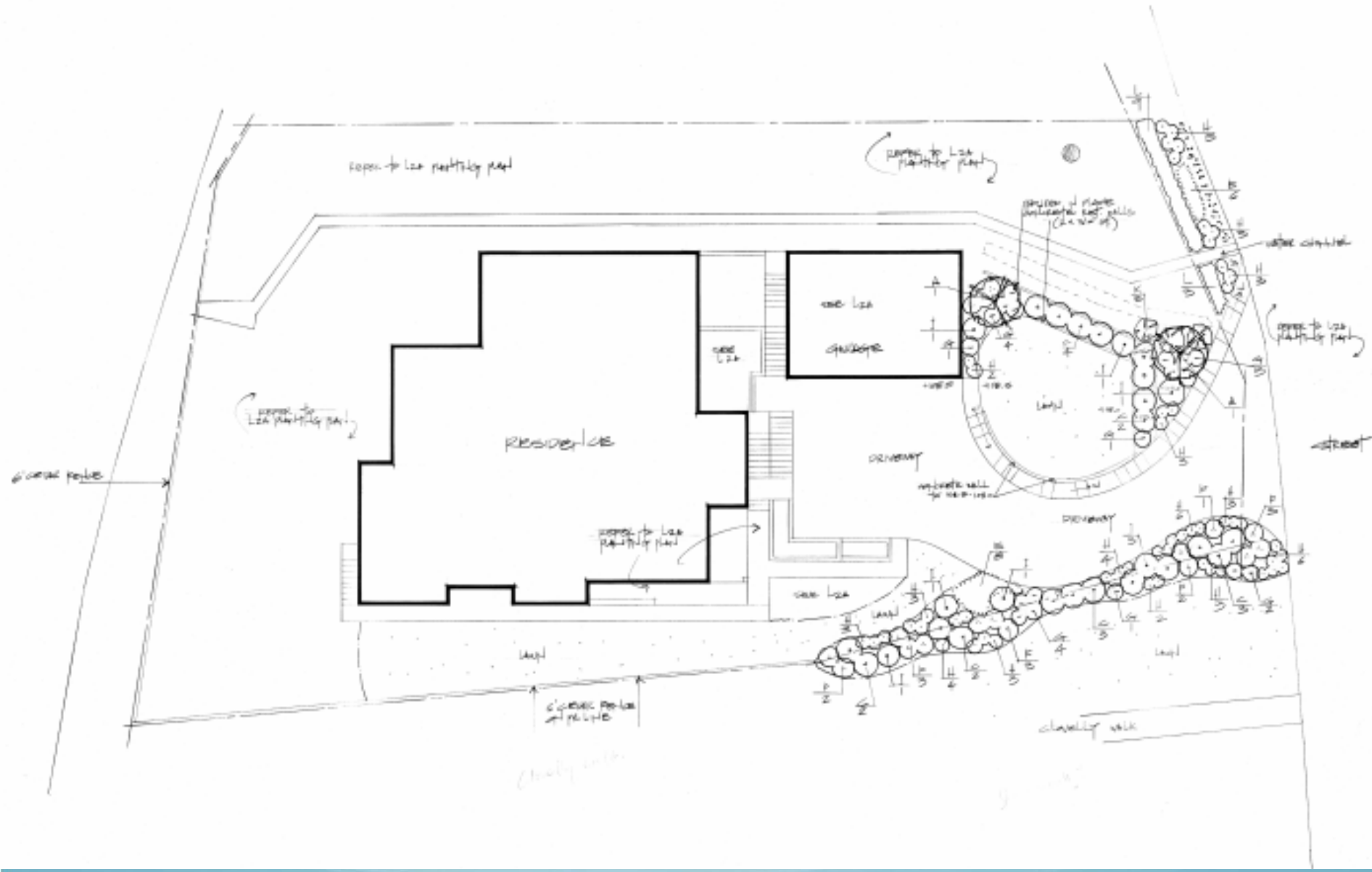


4701 Piccadilly South







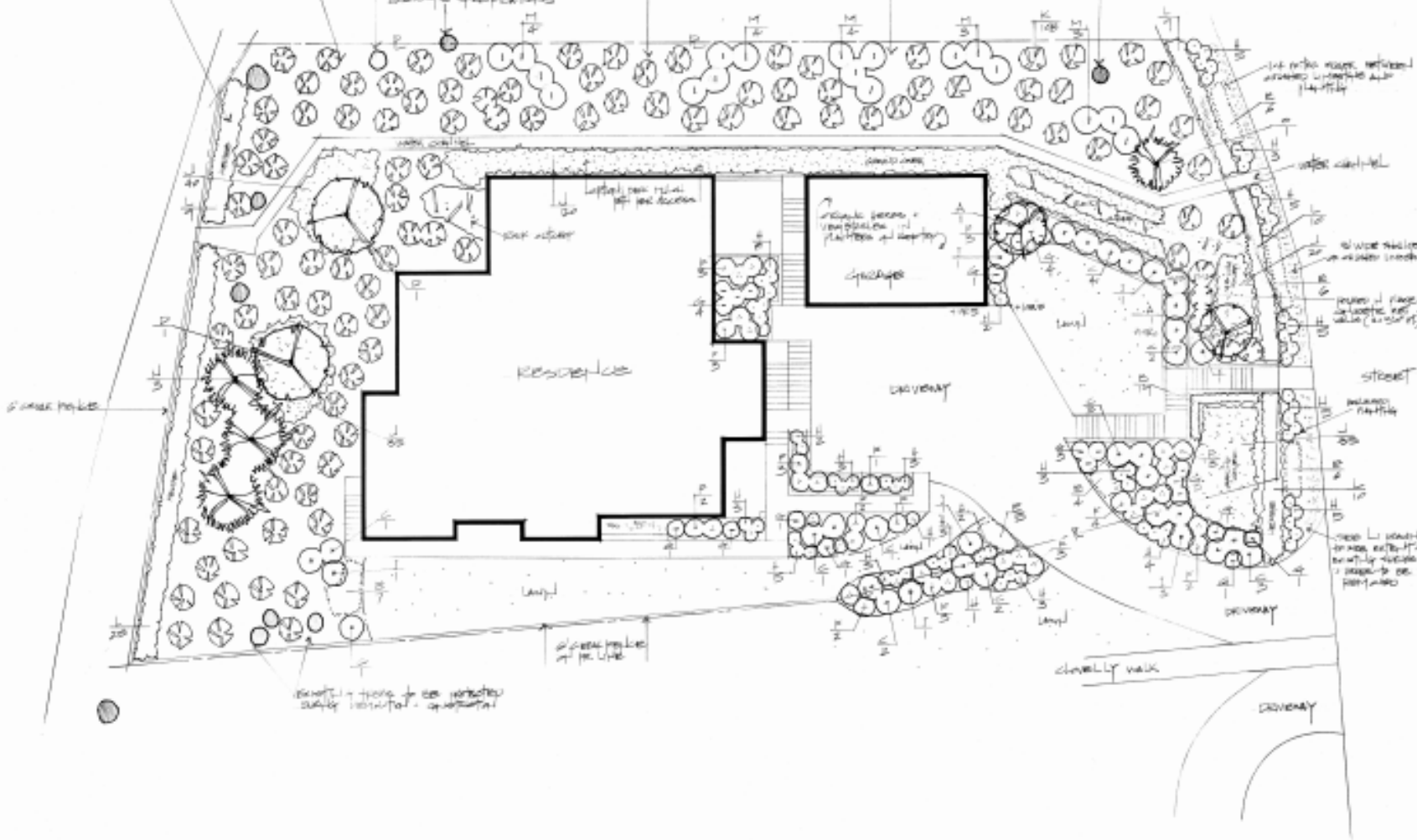


Use metal gravel outside
and concrete paving inside
to create a sense of order
and define the spaces + boundaries

Planting zones
to be defined, mostly separated
by concrete paving + gravel
to create a sense of order
and define the spaces + boundaries

Use planting to separate or
connect the spaces + create
a sense of order + boundaries

Use the concrete paving
to create a sense of order
and define the spaces + boundaries



VAN/DE/POLL
garden design

tel 024 475 1807 tel 024 515 2288
design@vandepollgardens.com

NOTES
1. ALL PLANTING TO BE DONE BY THE END OF THE PROJECT
2. ALL PLANTING TO BE DONE BY THE END OF THE PROJECT
3. ALL PLANTING TO BE DONE BY THE END OF THE PROJECT
4. ALL PLANTING TO BE DONE BY THE END OF THE PROJECT
5. ALL PLANTING TO BE DONE BY THE END OF THE PROJECT
6. ALL PLANTING TO BE DONE BY THE END OF THE PROJECT
7. ALL PLANTING TO BE DONE BY THE END OF THE PROJECT
8. ALL PLANTING TO BE DONE BY THE END OF THE PROJECT
9. ALL PLANTING TO BE DONE BY THE END OF THE PROJECT
10. ALL PLANTING TO BE DONE BY THE END OF THE PROJECT



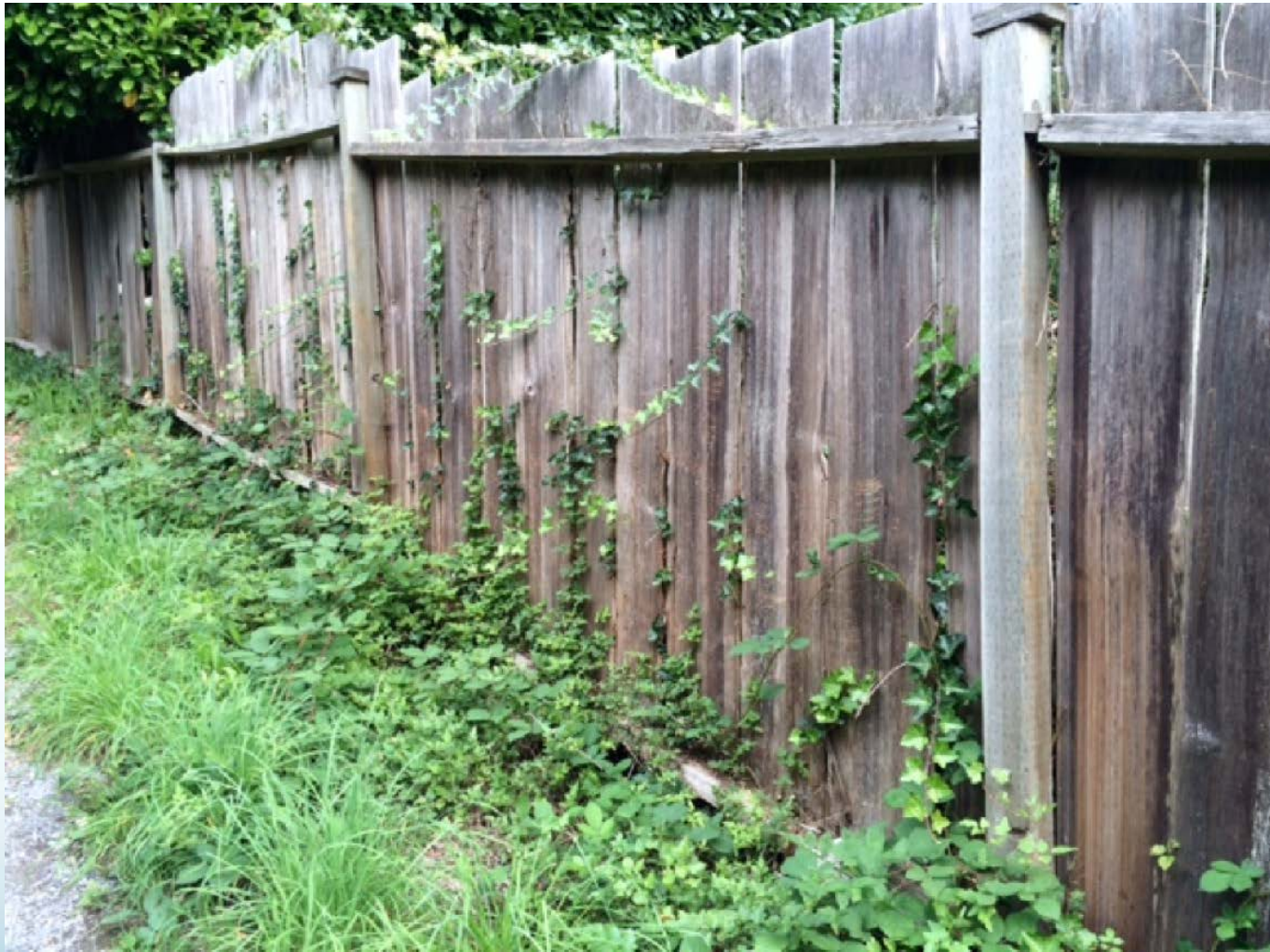
PROJECT
MILNER
RESIDENCE
OPEN SPACE PLAN
TO BE USED AS A GUIDE

PROJECT
MILNER
RESIDENCE
OPEN SPACE PLAN
TO BE USED AS A GUIDE

PROJECT
MILNER
RESIDENCE
OPEN SPACE PLAN
TO BE USED AS A GUIDE

PROJECT NO. 12345
DATE 1/2020
DRAWING NO. 12345
SCALE 1:50





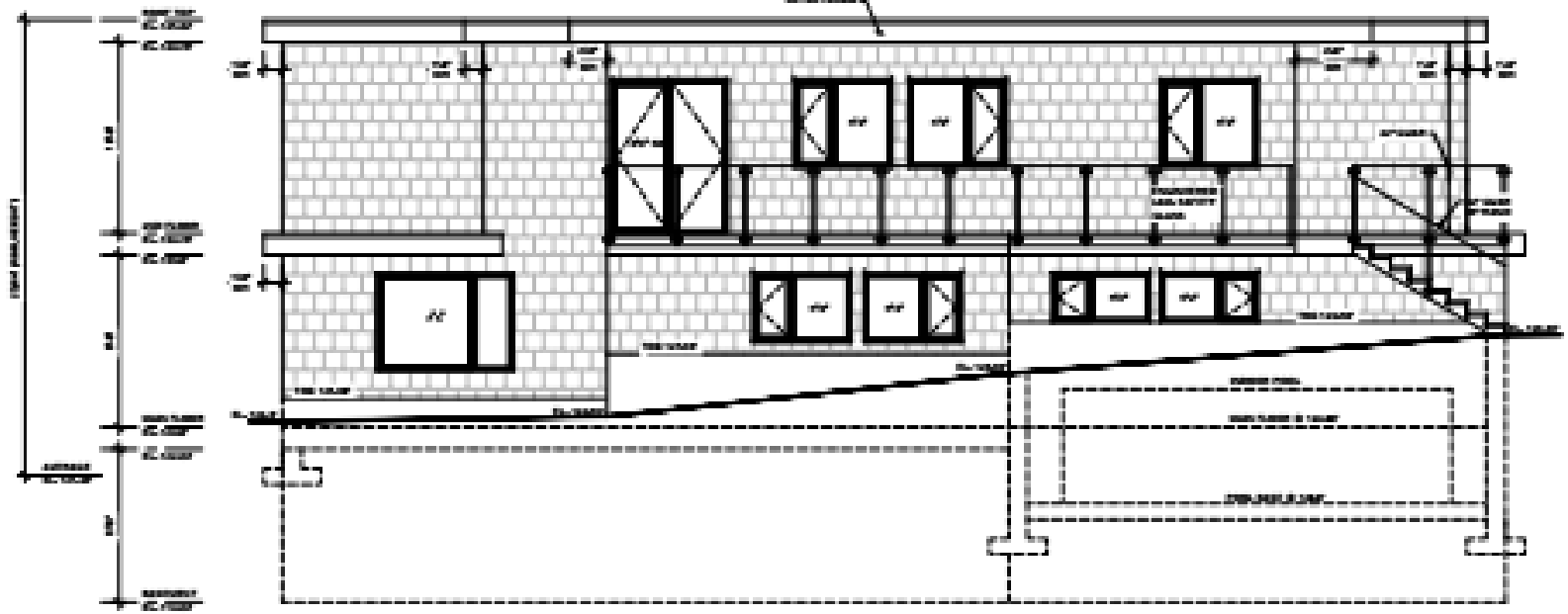




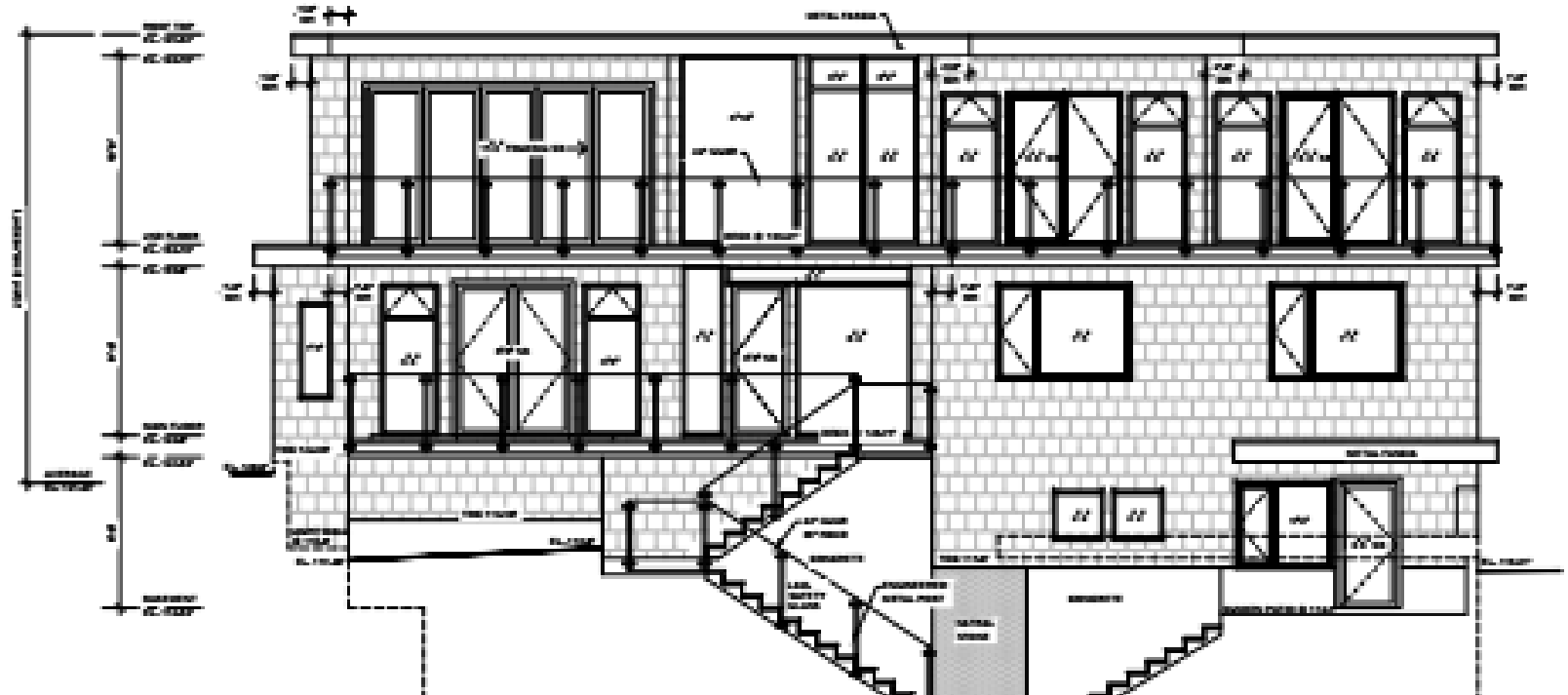


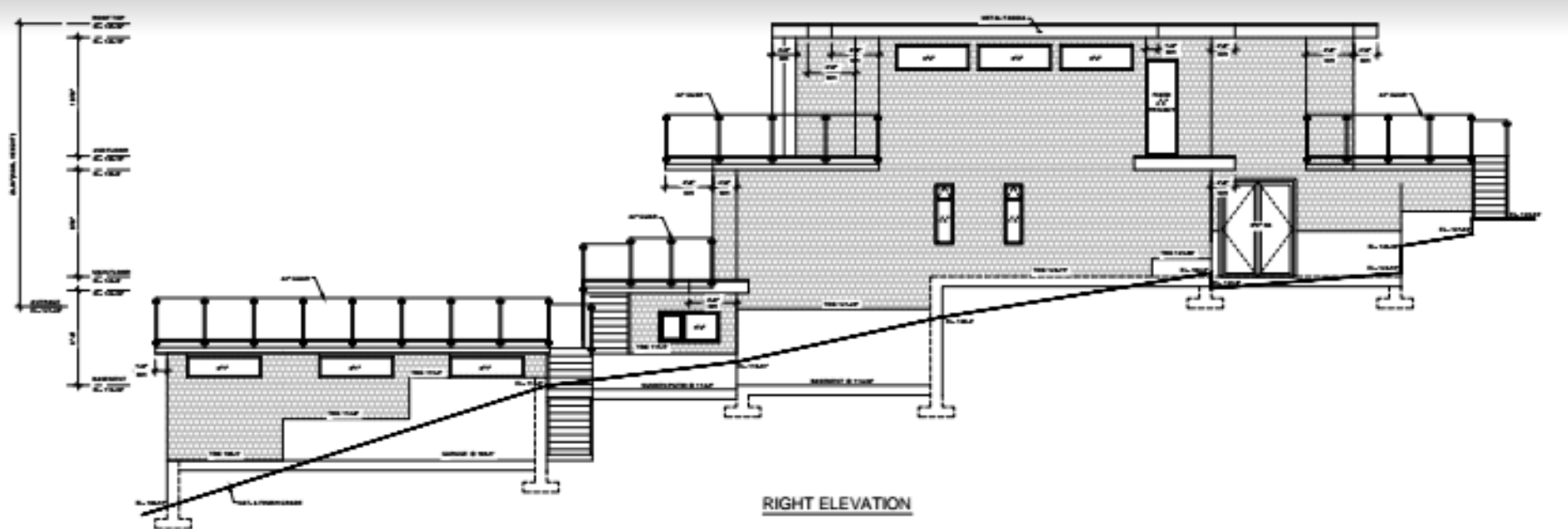




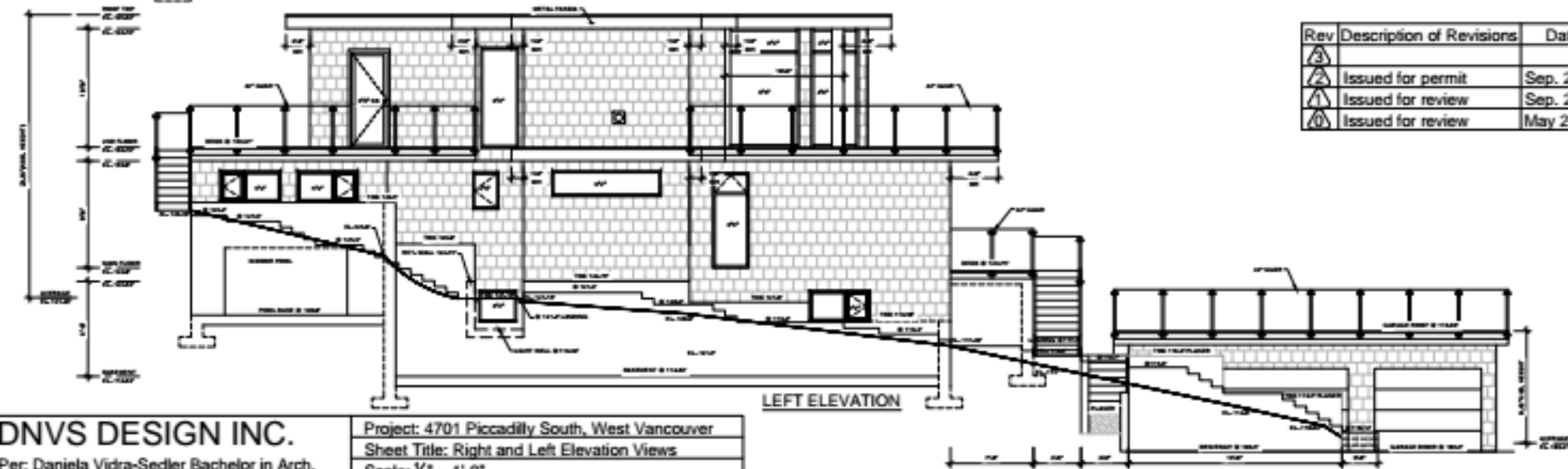


REAR ELEVATION





RIGHT ELEVATION

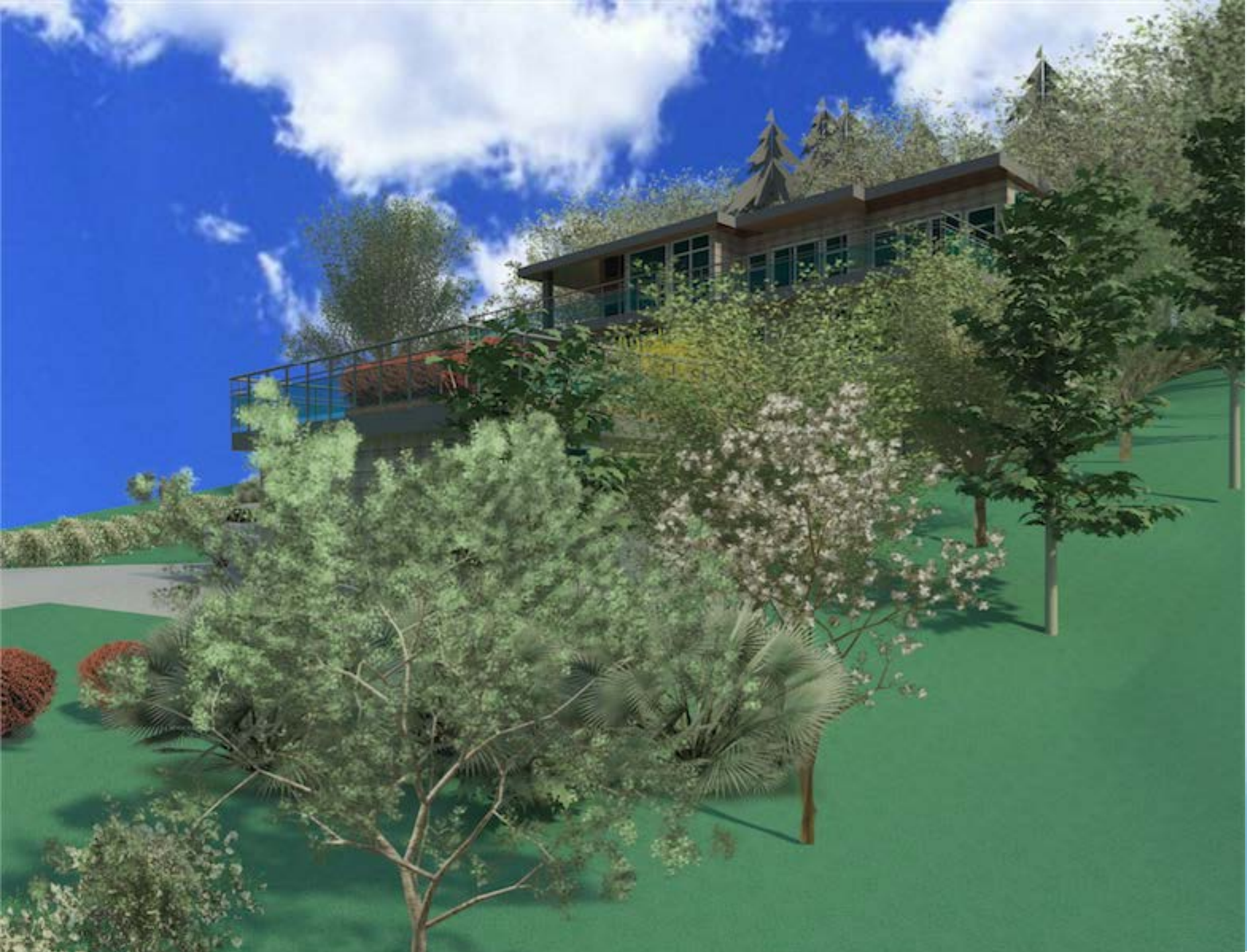


LEFT ELEVATION

Rev	Description of Revisions	Date
1	Issued for permit	Sep. 2016
2	Issued for review	Sep. 2016
3	Issued for review	May 2016

DNVS DESIGN INC.
 Per: Daniela Vidra-Sedler Bachelor in Arch.

Project: 4701 Piccadilly South, West Vancouver
 Sheet Title: Right and Left Elevation Views
 Scale: 1/2" = 1'-0"







Acer palmatum dissectum



Acer palmatum 'Sangokaku'



Buxus microphylla 'Winter Gem'



Carex 'Evergold'



Choisya ternata



Cornus kousa 'Milky Way'



Erica carnea 'Springwood White'



Escallonia x 'Newport Dwarf'



Euphorbia characias wulfenii



Hakonechloa macra 'Aureola'



Helictotrichon sempervirens



Hydrangea m. 'Lanarth White'



Liriope muscari 'Big Blue'



Pachysandra terminalis



Polystichum munitum



Skimmia japonica



Taxus x media hicksii



Thuja plicata excels



Picea omorika