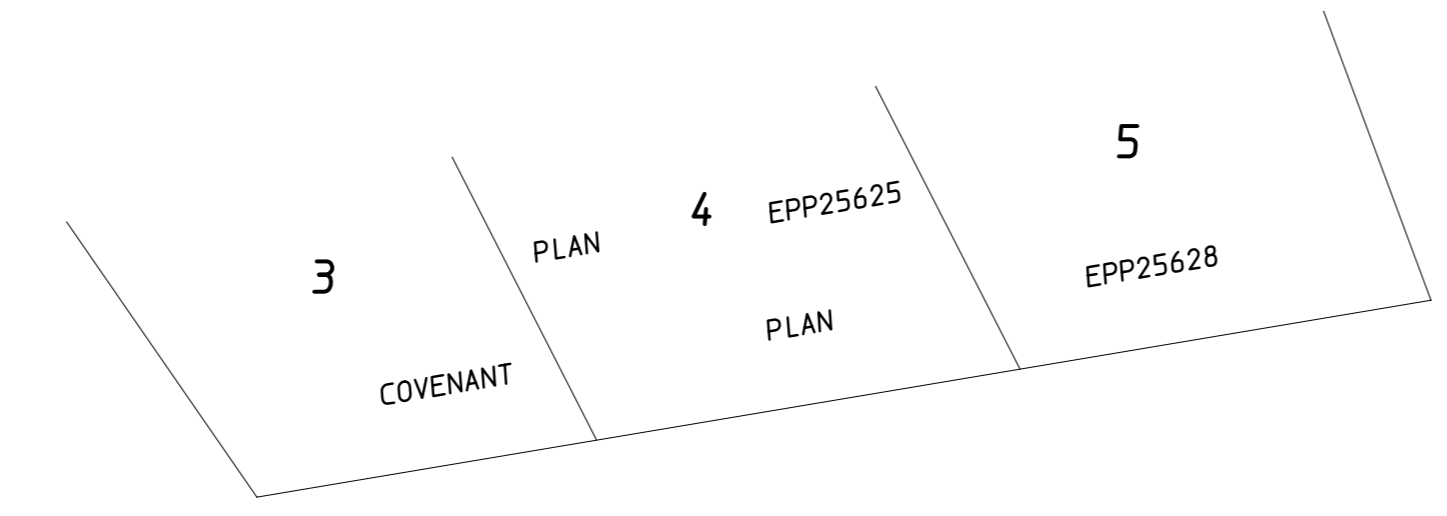
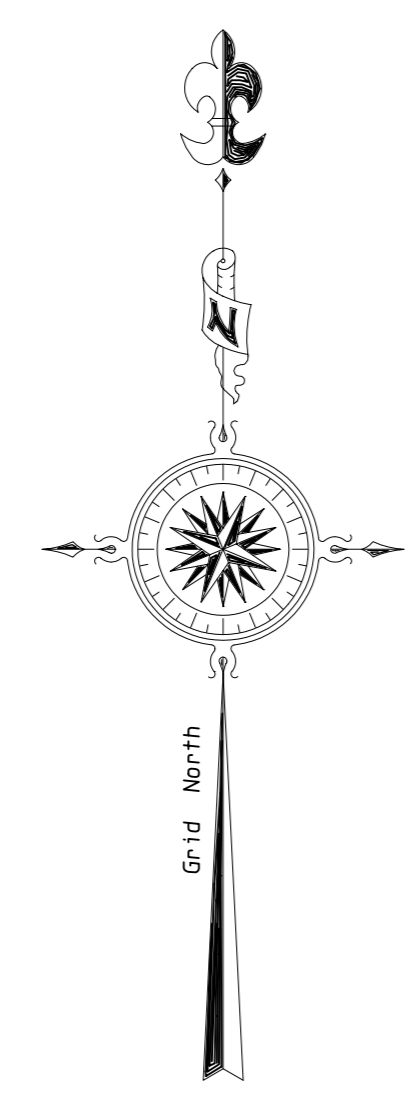
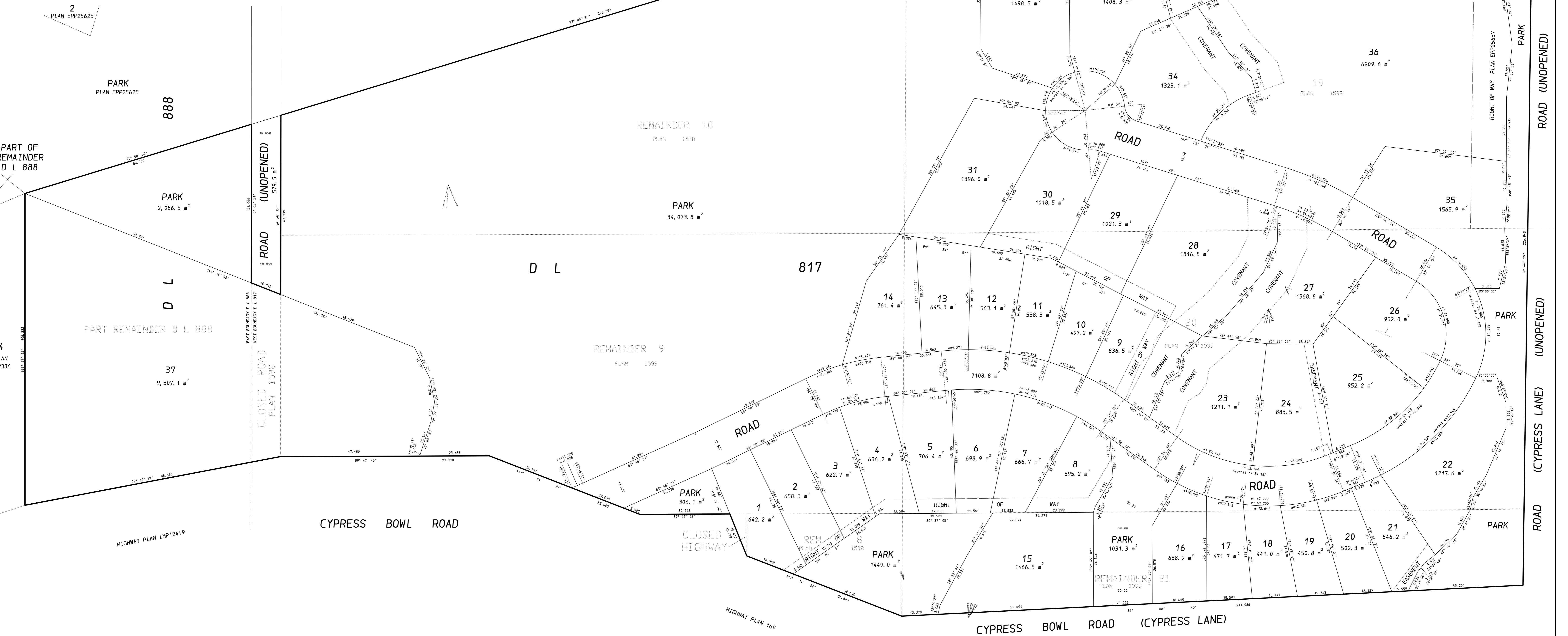


- SUBDIVISION PLAN OF
- PART OF THAT PART OF DISTRICT LOT 888, GROUP 1, LYING TO THE EAST OF BLOCKS B AND C, PLAN 2056, EXCEPT: PLANS 21009, 21528, BCP386 AND EPP25625;
  - THE EAST 1/2 OF THE EAST 1/2 OF BLOCK 8 EXCEPT, PART ON HIGHWAY PLAN 169, DISTRICT LOT 817, PLAN 1598;
  - BLOCK 9, EXCEPT: PART ON HIGHWAY PLAN 169, DISTRICT LOT 817, PLAN 1598;
  - BLOCK 10, DISTRICT LOT 817, PLAN 1598 EXCEPT PLAN EPP25625;
  - BLOCK 11, DISTRICT LOT 817, PLAN 1598, EXCEPT PLAN EPP25625;
  - BLOCK 18, DISTRICT LOT 817, PLAN 1598, EXCEPT PLAN EPP25625;
  - BLOCK 19, DISTRICT LOT 817, PLAN 1598;
  - BLOCK 20, DISTRICT LOT 817, PLAN 1598;
  - BLOCK 21, EXCEPT: PART ON HIGHWAY PLAN 169, DISTRICT LOT 817, PLAN 1598;
  - CLOSED ROAD AS SHOWN ON REFERENCE PLAN EPP\_ \_ \_ DISTRICT LOT 817, DEDICATED ON PLAN 1598; AND
  - CLOSED HIGHWAY AS SHOWN ON REFERENCE PLAN EPP\_ \_ \_ DISTRICT LOT 817, DEDICATED ON HIGHWAY PLAN 169; ALL OF GROUP 1, NEW WESTMINSTER DISTRICT



BCGS 926.035  
 The intended plot size of this plan is 1120 mm in width by 864 mm in height (E size) when plotted at a scale of 1:500.



GRID BEARINGS ARE DERIVED FROM GNSS OBSERVATIONS AND ARE REFERRED TO THE CENTRAL MERIDIAN OF UTM ZONE 10. TO OBTAIN LOCAL ASTRONOMIC BEARINGS REFERRED TO THE MERIDIAN THROUGH GPS CONTROL POINTS, ADD OR SUBTRACT THE APPROPRIATE MERIDIAN CONVERGENCE ANGLE NOTED HEREON.

THE UTM COORDINATES AND ESTIMATED HORIZONTAL POSITIONAL ACCURACY ACHIEVED ARE DERIVED FROM GNSS TIES TO BC ACTIVE CONTROL POINT 'BCVC'.

- GLOSS**
- denotes standard iron post found in place.
  - denotes lead plug found in place.
  - ⊙ denotes standard rock post set (GPS).
  - denotes standard iron post set.
  - denotes lead plug set.
  - NSP denotes not suitable for posting.
  - WT denotes witness.
  - NF denotes nothing found.

**NOTE:**  
 This plan shows one or more witness posts which are not set on the true corner(s).

TOTAL LOTS	= 47466.0 m <sup>2</sup>	= 50.44 %
TOTAL ROADS	= 7108.8 m <sup>2</sup>	= 7.56 %
DEDICATED PARKS	= 38946.7 m <sup>2</sup>	
UNOPENED ROAD ALLOWANCE	= 579.5 m <sup>2</sup>	
TOTAL PARK	= 39526.2 m <sup>2</sup>	= 42.00 %
TOTAL SITE	= 94101.0 m <sup>2</sup>	= 100.00 %

UPDATED JULY 3, 2013.

The field survey represented by this plan was completed by William Ray Chapman, B.C.L.S. on the day of , 2013.

THIS PLAN LIES WITHIN THE GREATER VANCOUVER REGIONAL DISTRICT.

THIS PLAN SHOWS HORIZONTAL GROUND-LEVEL DISTANCES UNLESS OTHERWISE SPECIFIED. TO COMPUTE GRID DISTANCES, MULTIPLY GROUND-LEVEL DISTANCES BY THE APPROPRIATE COMBINED FACTOR AS DERIVED FROM THE COMBINED FACTORS NOTED HEREON.

THIS PLAN LIES WITHIN THE JURISDICTIONS OF THE APPROVING OFFICERS FOR THE DISTRICT OF WEST VANCOUVER AND THE MINISTRY OF TRANSPORTATION AND INFRASTRUCTURE.

SUBDIVISION APPLICATION NUMBER: BPP-SUB13-001.  
 DEVELOPMENT PERMIT NUMBER:

CHAPMAN LAND SURVEYING LTD.  
 British Columbia Land Surveyors  
 107-100 Park Royal South  
 WEST VANCOUVER, B.C.  
 V7T 1A2 604-926-7311  
 FAX 604-926-9233  
 EMAIL: sandy@chapmansurvey.com