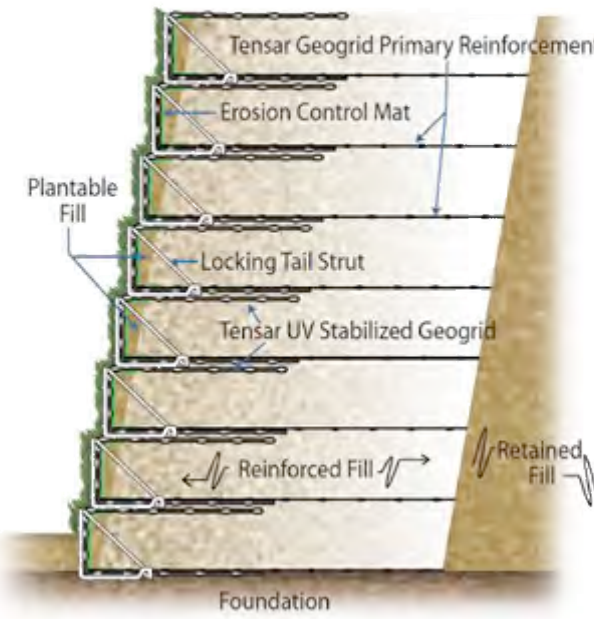
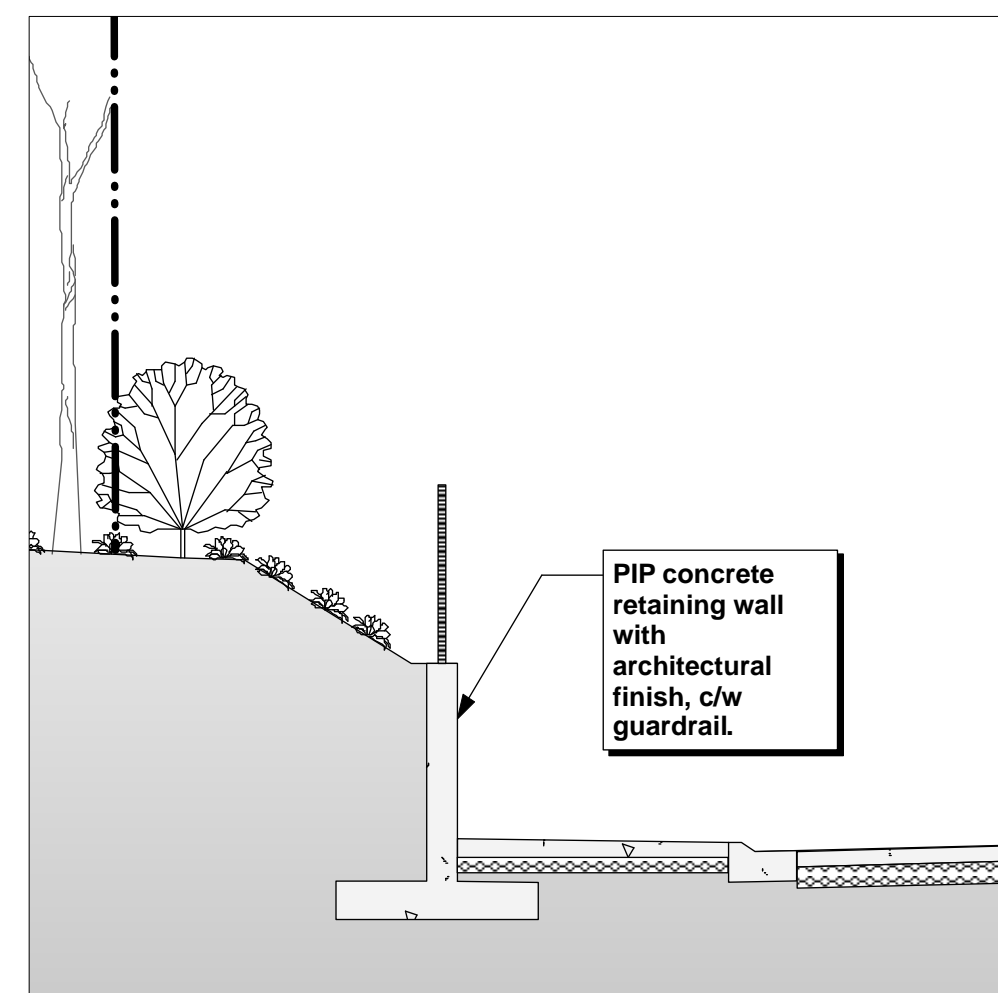
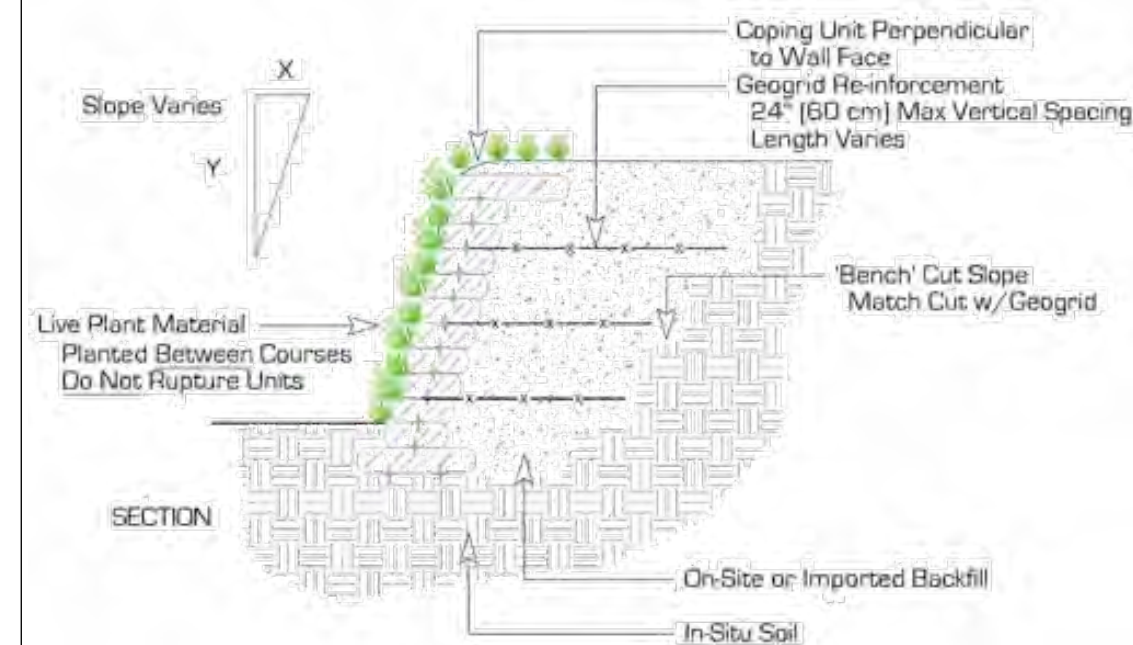


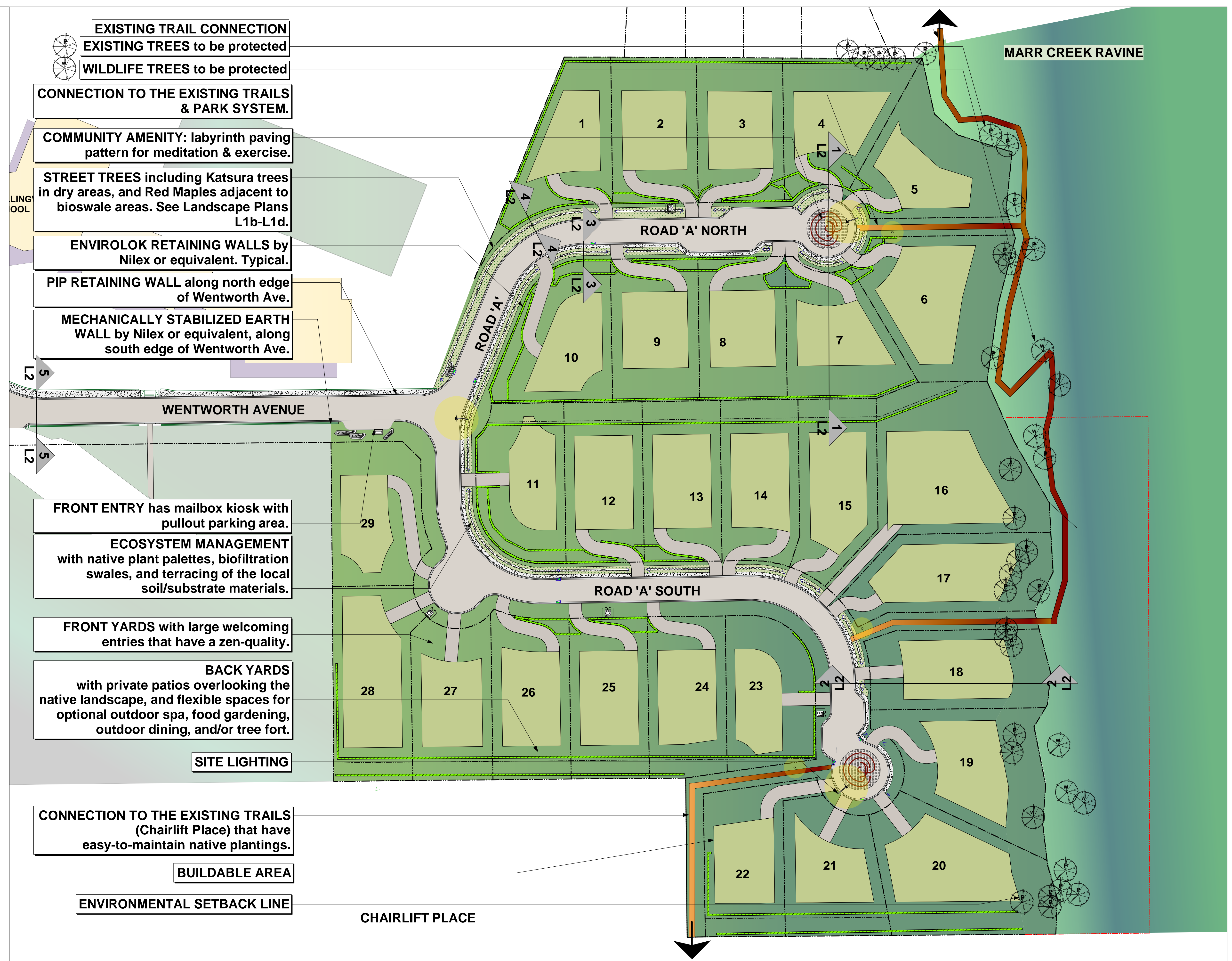
PIP retaining wall on north side of Wentworth Avenue



Niles 'Sierrascape' wire-form retaining wall system on south side of Wentworth Avenue



Niles 'Envirolok' vegetated retaining wall system. Typical.



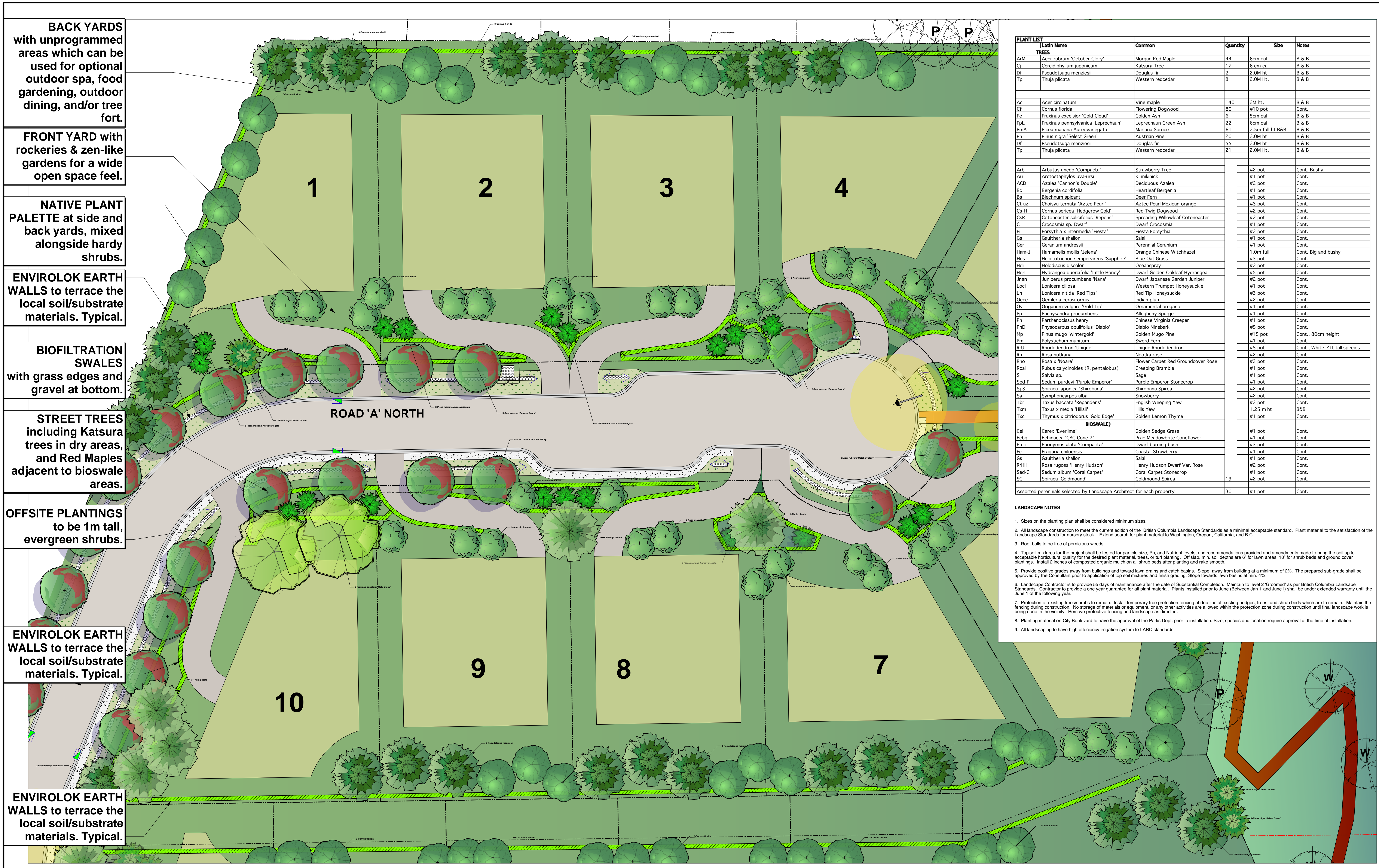
		Apr 28.17	Resubmit for DP Application	Mar 24.16	Resubmit for DP Application
		Apr 07.17	Resubmit for DP Application	Mar 23.16	For Client Review
		Jan 30.17	Resubmit for DP Application	Jun 22.15	For Subdivision & DP Application
May 18.17	Resubmit for DP Application	Aug 04.16	Resubmit for DP Application	Jun 22.15	For Client Review
date	revision	date	revision	date	revision

client
Canland Investment Inc.
project
WENTWORTH
15171 - Westmount Collingwood
West Vancouver, BC

Jonathan Losee Ltd.
Landscape Architecture
#102 - 1661 W. 2nd Ave.
Vancouver, B.C. V6J 1Y3
Ph: 604-669-1003 Fax: 604-669-0402
E-mail: info@jonathanlosee.com

designed by	JLL	title	
drawn by	JLL		
checked by	JLL		
date	June 2015		

scale: 1:500
file no. 2015-21
drawing no. L1a
LANDSCAPE SITE PLAN



BACK YARDS with unprogrammed areas which can be used for optional outdoor spa, food gardening, outdoor dining, and/or tree fort.

FRONT YARD with rockeries & zen-like gardens for a wide open space feel.

NATIVE PLANT PALETTE at side and back yards, mixed alongside hardy shrubs.

ENVIROLOK EARTH WALLS to terrace the local soil/substrate materials. Typical.

BIOFILTRATION SWALES with grass edges and gravel at bottom.

STREET TREES including Katsura trees in dry areas, and Red Maples adjacent to bioswale areas.

OFFSITE PLANTINGS to be 1m tall, evergreen shrubs.

ENVIROLOK EARTH WALLS to terrace the local soil/substrate materials. Typical.

ENVIROLOK EARTH WALLS to terrace the local soil/substrate materials. Typical.

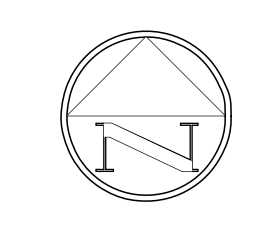
PLANT LIST					
Latin Name	Common	Quantity	Size	Notes	
TREES					
ArM	Acer rubrum 'October Glory'	44	6cm cal	B & B	
Cj	Caridaphylum japonicum	17	6 cm cal	B & B	
Df	Pseudotsuga menziesii	2	2.0M ht	B & B	
Tp	Thuja plicata	8	2.0M HT.	B & B	
SHRUBS					
Ac	Acer circinatum	140	2M ht.	B & B	
Cf	Cornus florida	80	#10 pot	Cont.	
Fe	Fraxinus excelsior 'Gold Cloud'	6	5cm cal	B & B	
FpL	Fraxinus pennsylvanica 'Leprechaun'	22	6cm cal	B & B	
PmA	Picea mariana Aureovariegata	61	2.5m full ht B&B	B & B	
Pn	Pinus nigra 'Select Green'	20	2.0M ht	B & B	
Df	Pseudotsuga menziesii	55	2.0M ht	B & B	
Tp	Thuja plicata	21	2.0M HT.	B & B	
PERENNIALS					
Arb	Arbutus unedo 'Compacta'		#2 pot	Cont. Bushy.	
Au	Arctostaphylos uva-ursi		#1 pot	Cont.	
ACD	Azalea 'Cannon's Double'		#2 pot	Cont.	
Bc	Bergenia cordifolia		#1 pot	Cont.	
Bs	Blechnum spicant		#1 pot	Cont.	
Cl az	Choisya ternata 'Aztec Pearl'		#3 pot	Cont.	
Cs-H	Cornus sericea 'Hedgehog Gold'		#2 pot	Cont.	
CsR	Cotoneaster salicifolius 'Repens'		#2 pot	Cont.	
C	Crocsmia sp. Dwarf		#1 pot	Cont.	
Fi	Forsythia x intermedia 'Fiesta'		#2 pot	Cont.	
Gs	Gaulltheria shallon		#1 pot	Cont.	
Ger	Geranium andressii		#1 pot	Cont.	
Ham-J	Hamamelis mollis 'Jelena'		1.0m full	Cont. Big and bushy	
Hes	Helictotrichon sempervirens 'Sapphire'		#3 pot	Cont.	
Hd	Holidiscus discolor		#2 pot	Cont.	
Hq-L	Hydrangea quercifolia 'Little Honey'		#5 pot	Cont.	
Jnan	Juniperus procumbens 'Nana'		#2 pot	Cont.	
Loci	Lonicera ciliosa		#1 pot	Cont.	
Ln	Lonicera nitida 'Red Tips'		#3 pot	Cont.	
Oee	Oemleria cerasiformis		#2 pot	Cont.	
Ov	Origanum vulgare 'Gold Tip'		#1 pot	Cont.	
Pp	Pachysandra procumbens		#1 pot	Cont.	
Pch	Parthenocissus henryi		#1 pot	Cont.	
PHD	Physocarpus opulifolius 'Diablo'		#5 pot	Cont.	
Mp	Pinus mugo 'wintergold'		#15 pot	Cont. 80cm height	
Pm	Polystichum munium		#1 pot	Cont.	
R-U	Rhododendron 'Unique'		#5 pot	Cont. White, 4ft tall species	
Rn	Rosa nutkana		#2 pot	Cont.	
Rno	Rosa x 'Noare'		#3 pot	Cont.	
Rcal	Rubus calycinoides (R. pentalobus)		#1 pot	Cont.	
S	Salvia sp.		#1 pot	Cont.	
Sed-P	Sedum purpureo 'Purple Emperor'		#1 pot	Cont.	
Sj S	Spiraea japonica 'Shirobana'		#2 pot	Cont.	
Sa	Symphoricarpos alba		#2 pot	Cont.	
Tbr	Taxus baccata 'Repandens'		#3 pot	Cont.	
Txm	Taxus x media 'Hillsii'		1.25 m ht	B&B	
Txc	Thymus x citriodorus 'Gold Edge'		#1 pot	Cont.	
BIOSWALES					
Cel	Carex 'Everlime'		#1 pot	Cont.	
Ecbg	Echinacea 'CBG Cone 2'		#1 pot	Cont.	
Ea c	Euonymus alata 'Compacta'		#3 pot	Cont.	
Fc	Fragaria chiloensis		#1 pot	Cont.	
Gs	Gaulltheria shallon		#1 pot	Cont.	
RHH	Rosa rugosa 'Henry Hudson'		#2 pot	Cont.	
Sed-C	Sedum album 'Coral Carpet'		#1 pot	Cont.	
SG	Spiraea 'Goldmound'	19	#2 pot	Cont.	
Assorted perennials selected by Landscape Architect for each property		30	#1 pot	Cont.	

- LANDSCAPE NOTES**
- Sizes on the planting plan shall be considered minimum sizes.
 - All landscape construction to meet the current edition of the British Columbia Landscape Standards as a minimal acceptable standard. Plant material to the satisfaction of the Landscape Standards for nursery stock. Extend search for plant material to Washington, Oregon, California, and B.C.
 - Root balls to be free of pernicious weeds.
 - Top soil mixtures for the project shall be tested for particle size, Ph, and Nutrient levels, and recommendations provided and amendments made to bring the soil up to acceptable horticultural quality for the desired plant material, trees, or turf planting. Off slab, min. soil depths are 6" for lawn areas, 18" for shrub beds and ground cover plantings. Install 2 inches of composted organic mulch on all shrub beds after planting and rake smooth.
 - Provide positive grades away from buildings and toward lawn drains and catch basins. Slope away from building at a minimum of 2%. The prepared sub-grade shall be approved by the Consultant prior to application of top soil mixtures and finish grading. Slope towards lawn basins at min. 4%.
 - Landscape Contractor is to provide 55 days of maintenance after the date of Substantial Completion. Maintain to level 2 'Groomed' as per British Columbia Landscape Standards. Contractor to provide a one year guarantee for all plant material. Plants installed prior to June (Between Jan 1 and June 1) shall be under extended warranty until the June 1 of the following year.
 - Protection of existing trees/shrubs to remain: Install temporary tree protection fencing at drip line of existing hedges, trees, and shrub beds which are to remain. Maintain the fencing during construction. No storage of materials or equipment, or any other activities are allowed within the protection zone during construction until final landscape work is being done in the vicinity. Remove protective fencing and landscape as directed.
 - Planting material on City Boulevard to have the approval of the Parks Dept. prior to installation. Size, species and location require approval at the time of installation.
 - All landscaping to have high efficiency irrigation system to IABC standards.

date	revision	date	revision	date	revision	client	project	designed by	title	scale:
Apr 28.17	Resubmit for DP Application	Mar 24.16	Resubmit for DP Application			Canland Investment Inc.	WENTWORTH	JLL	SCHMATIC LANDSCAPE PLAN	1:200
Apr 07.17	Resubmit for DP Application	Mar 23.16	For Client Review				15171 - Westmount Collingwood	JLL		file no. 2015-21
Jan 30.17	Resubmit for DP Application	Jun 22.15	For Subdivision & DP Application				West Vancouver, BC	JLL		drawing no. L1b
May 18.17	Resubmit for DP Application	Aug 04.16	Resubmit for DP Application					JLL		
								date	June 2015	

Jonathan Losee Ltd.
Landscape Architecture

#102 - 1661 W. 2nd Ave.
Vancouver, B.C. V6J 1H3
Ph: 604-669-1003 Fax: 604-669-0402
E-mail: info@jonathanlosee.com



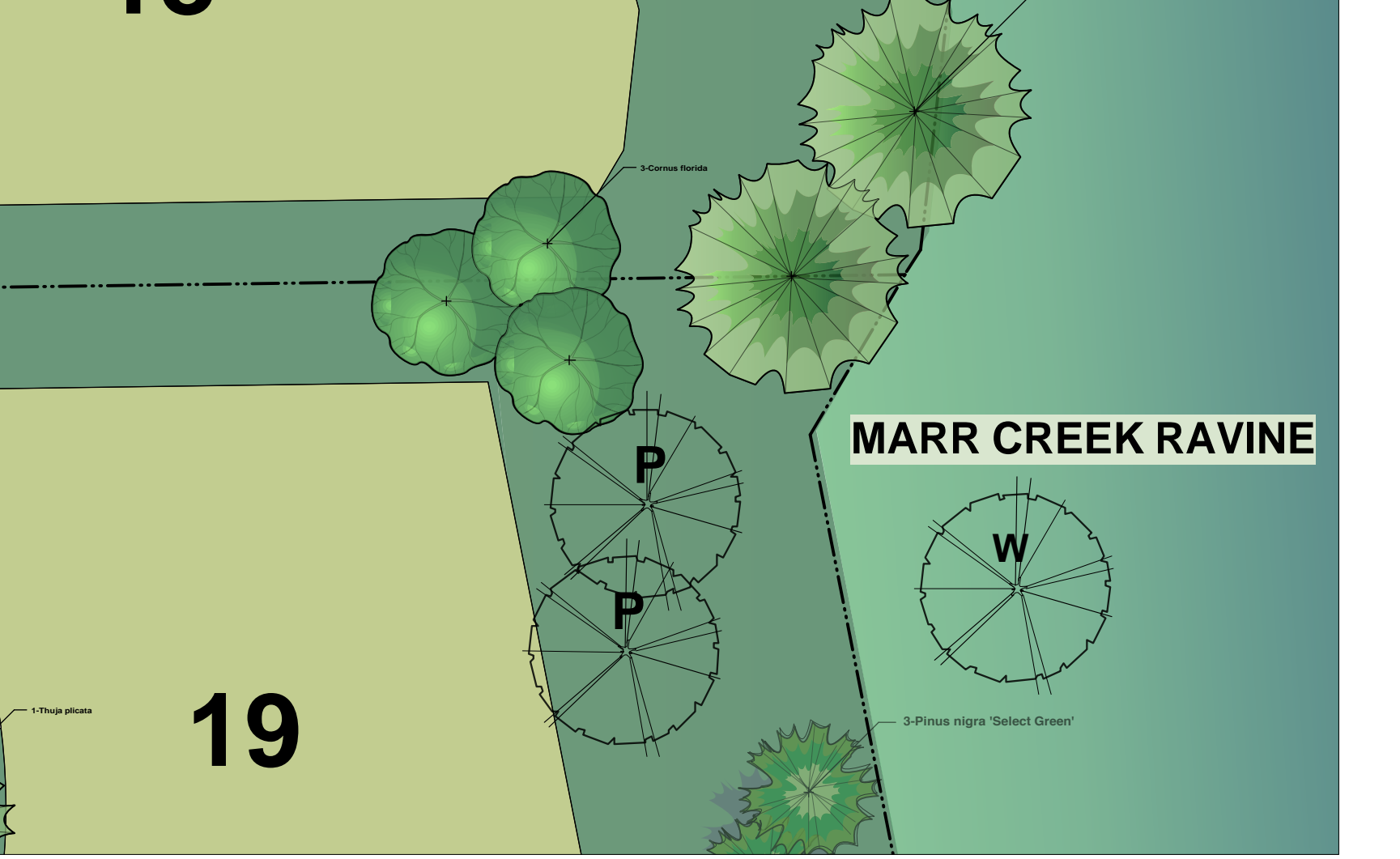
SCHMATIC LANDSCAPE PLAN

scale: 1:200
file no. 2015-21
drawing no. L1b



Code	Plant Name	Quantity	Size	Notes		
ArM	Acer rubrum 'October Glory'	44	6cm cal	B & B		
CJ	Carodaphylum japonicum	17	6 cm cal	B & B		
DF	Pseudotsuga menziesii	2	2.0M ht	B & B		
Tp	Thuja plicata	8	2.0M Ht.	B & B		
ONSITE						
Ac	Acer circinatum	140	2M ht.	B & B		
Cf	Cornus florida	80	#1.0 pot	Cont.		
Fe	Fraxinus excelsior 'Gold Cloud'	6	5cm cal	B & B		
Fpl	Fraxinus pennsylvanica 'Leprechaun'	22	6cm cal	B & B		
PmA	Picea mariana Aureovariegata	61	2.5m full ht B&B	B & B		
Pn	Pinus nigra 'Select Green'	20	2.0M ht	B & B		
Df	Pseudotsuga menziesii	55	2.0M ht.	B & B		
Tp	Thuja plicata	21	2.0M Ht.	B & B		
Arb	Arbutus unedo 'Compacta'	#2 pot		Cont. Bushy.		
Au	Arctostaphylos uva-ursi	#1 pot		Cont.		
ACD	Azalea 'Cannon's Double'	#2 pot		Cont.		
Bc	Bergenia cordifolia	#1 pot		Cont.		
Bs	Blechnum spicant	#1 pot		Cont.		
Cl az	Choisya ternata 'Aztec Pearl'	#3 pot		Cont.		
Cs-H	Cornus sericea 'Hedgegrow Gold'	#2 pot		Cont.		
CsR	Cotoneaster salicifolius 'Repens'	#2 pot		Cont.		
C	Crocsmia sp. Dwarf	#1 pot		Cont.		
Fi	Forsythia x intermedia 'Fiesta'	#2 pot		Cont.		
Gs	Gaultheria shallon	#1 pot		Cont.		
Ger	Geranium andressii	#1 pot		Cont.		
Ham-J	Hamelis mollis 'Jelena'	1.0m Full		Cont. Big and bushy		
Hes	Helictotrichon sempervirens 'Sapphire'	#3 pot		Cont.		
Hh	Holodiscus discolor	#2 pot		Cont.		
Hq-L	Hydrangea quercifolia 'Little Honey'	#5 pot		Cont.		
Jnan	Juniperus procumbens 'Nana'	#2 pot		Cont.		
Loci	Lonicera ciliosa	#1 pot		Cont.		
Ln	Lonicera nitida 'Red Tips'	#3 pot		Cont.		
Oe	Oemleria cerasiformis	#2 pot		Cont.		
Ov	Origanum vulgare 'Gold Tip'	#1 pot		Cont.		
Pp	Pachysandra procumbens	#1 pot		Cont.		
Ph	Parthenocissus henryi	#1 pot		Cont.		
PHD	Physocarpus opulifolius 'Diablo'	#5 pot		Cont.		
Mp	Pinus mugo 'wintergold'	#1.5 pot		Cont., 80cm height		
Pm	Polystichum munitum	#1 pot		Cont.		
R-U	Rhododendron 'Unique'	#5 pot		Cont., White, 4ft tall species		
Rn	Rosa nutkana	#2 pot		Cont.		
Rno	Rosa x 'Noare'	#3 pot		Cont.		
Rcal	Rubus calycioides (R. pentalobus)	#1 pot		Cont.		
S	Salvia sp.	#1 pot		Cont.		
Sed-P	Sedum purdyi 'Purple Emperor'	#1 pot		Cont.		
SJ-S	Spiraea japonica 'Shirobana'	#2 pot		Cont.		
Sa	Symphoricarpos alba	#2 pot		Cont.		
Tbr	Taxus baccata 'Repandens'	#3 pot		Cont.		
Txm	Taxus x media 'Hillsii'	1.25 m ht		B&B		
Txc	Thymus x citriodorus 'Gold Edge'	#1 pot		Cont.		
Cel	Carex 'Everlime'	#1 pot		Cont.		
Ecbg	Echinacea 'CBG Cone 2'	#1 pot		Cont.		
Ea c	Euonymus alata 'Compacta'	#3 pot		Cont.		
Fc	Fragaria chiloensis	#1 pot		Cont.		
Gs	Gaultheria shallon	#1 pot		Cont.		
RrH	Rosa rugosa 'Henry Hudson'	#2 pot		Cont.		
Sed-C	Sedum album 'Coral Carpet'	#1 pot		Cont.		
SG	Spiraea 'Goldmound'	#2 pot		Cont.		
Assorted perennials selected by Landscape Architect for each property				30	#1 pot	Cont.

- LANDSCAPE NOTES**
- Sizes on the planting plan shall be considered minimum sizes.
 - All landscape construction to meet the current edition of the British Columbia Landscape Standards as a minimal acceptable standard. Plant material to the satisfaction of the Landscape Standards for nursery stock. Extend search for plant material to Washington, Oregon, California, and B.C.
 - Root balls to be free of pernicious weeds.
 - Top soil mixtures for the project shall be tested for particle size, Ph, and Nutrient levels, and recommendations provided and amendments made to bring the soil up to acceptable horticultural quality for the desired plant material, trees, or turf planting. Off-stab, min. soil depths are 6" for lawn areas, 18" for shrub beds and ground cover plantings. Install 2 inches of composted organic mulch on all shrub beds after planting and rake smooth.
 - Provide positive grades away from buildings and toward lawn drains and catch basins. Slope away from building at a minimum of 2%. The prepared sub-grade shall be approved by the Consultant prior to application of top soil mixtures and finish grading. Slope towards lawn basins at min. 4%.
 - Landscape Contractor is to provide 55 days of maintenance after the date of Substantial Completion. Maintain to level 2 'Groomed' as per British Columbia Landscape Standards. Contractor to provide a one year guarantee for all plant material. Plants installed prior to June (Between Jan 1 and June 1) shall be under extended warranty until the June 1 of the following year.
 - Protection of existing trees/shrubs to remain: Install temporary tree protection fencing at drip line of existing hedges, trees, and shrub beds which are to remain. Maintain the fencing during construction. No storage of materials or equipment, or any other activities are allowed within the protection zone during construction until final landscape work is being done in the vicinity. Remove protective fencing and landscape as directed.
 - Planting material on City Boulevard to have the approval of the Parks Dept. prior to installation. Size, species and location require approval at the time of installation.
 - All landscaping to have high efficiency irrigation system to IABC standards.





STREET TREES including Katsura trees in dry areas, and Red Maples adjacent to bioswale areas.

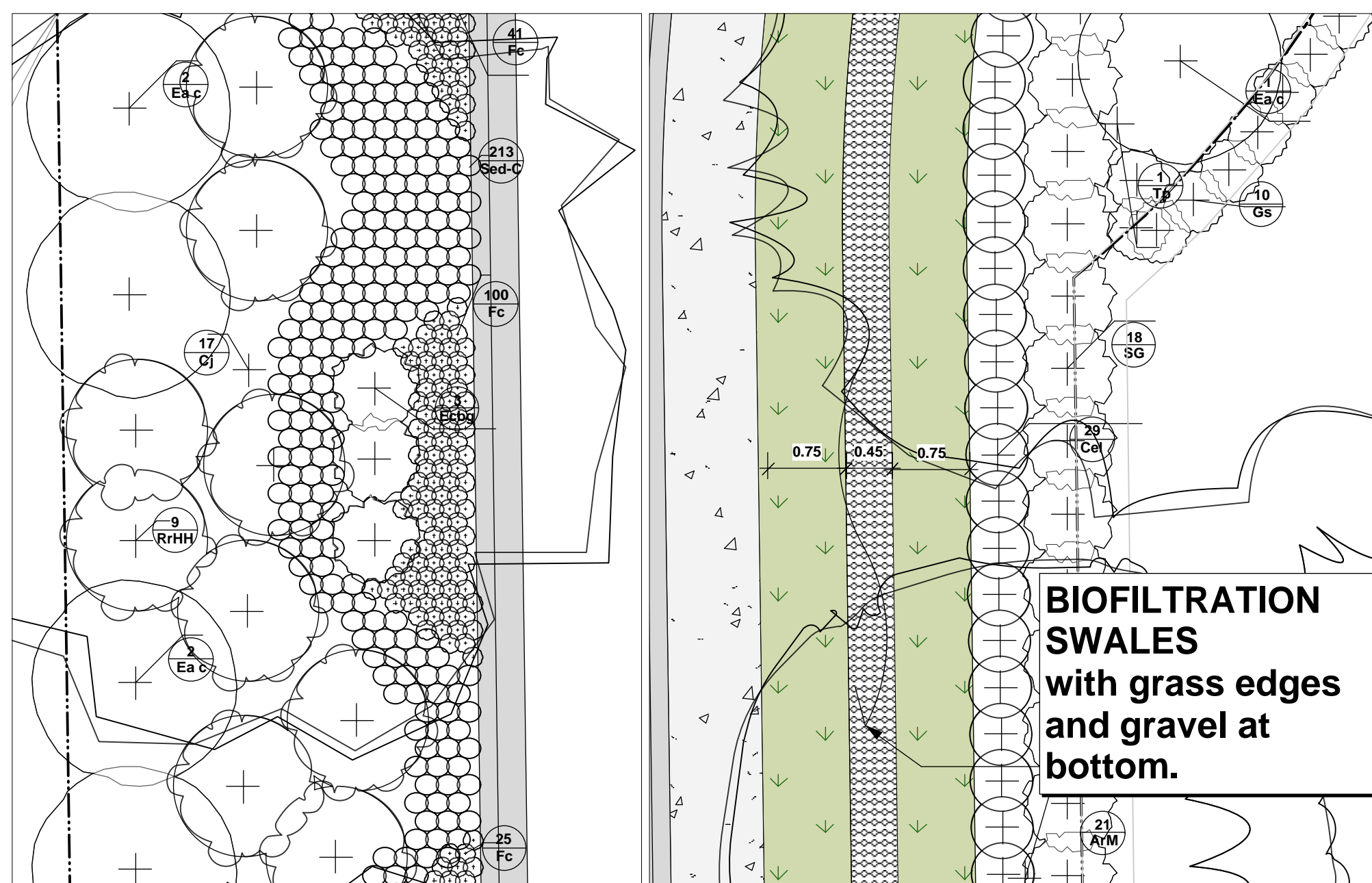
BIOFILTRATION SWALES with grass edges and gravel at bottom.

OFFSITE PLANTINGS to be 1m tall, evergreen shrubs.

ENVIROLOK EARTH WALLS to terrace the local soil/substrate materials. Typical.

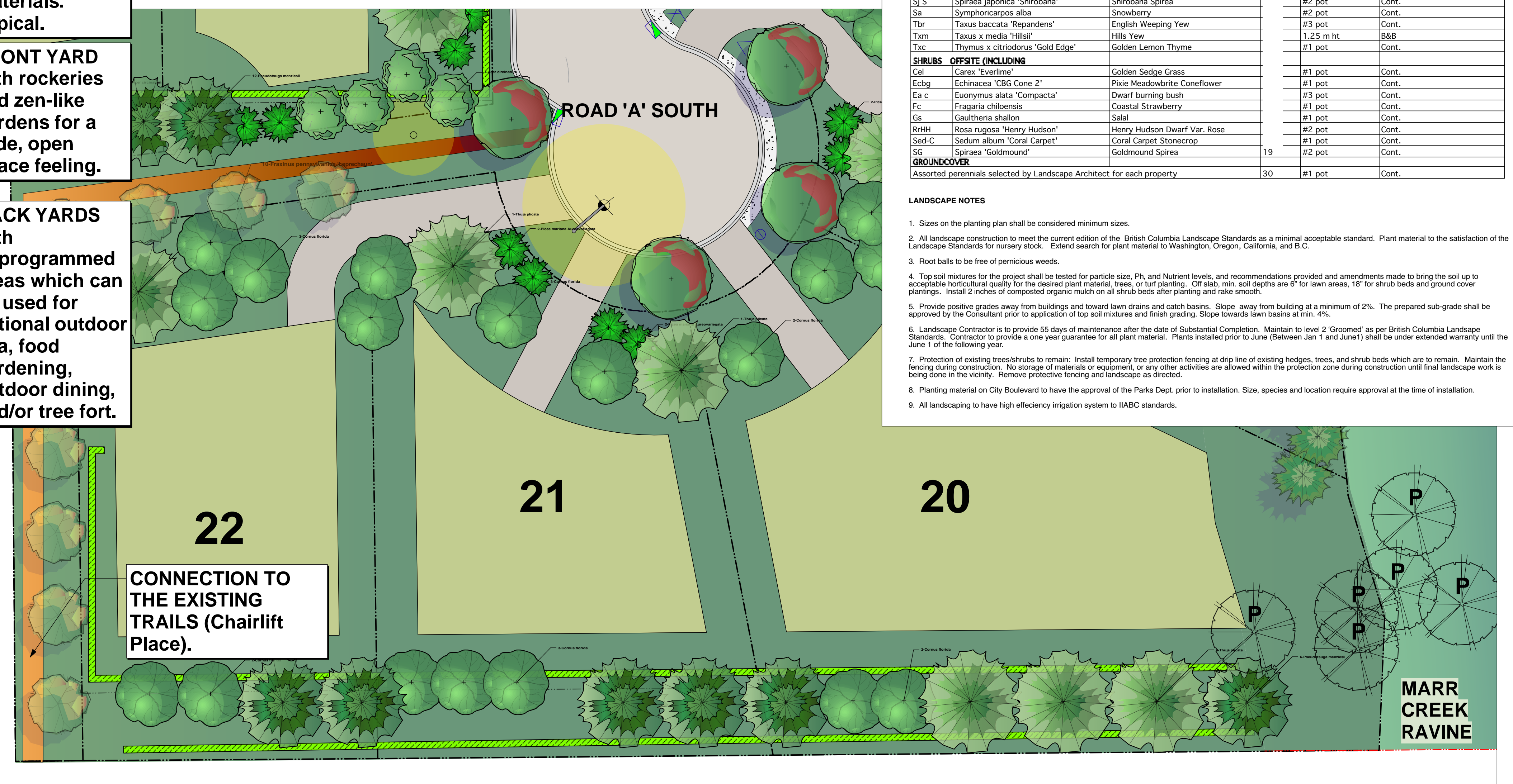
FRONT YARD with rockeries and zen-like gardens for a wide, open space feeling.

BACK YARDS with unprogrammed areas which can be used for optional outdoor spa, food gardening, outdoor dining, and/or tree fort.



OFFSITE PLANTING PLANT PALETTE A

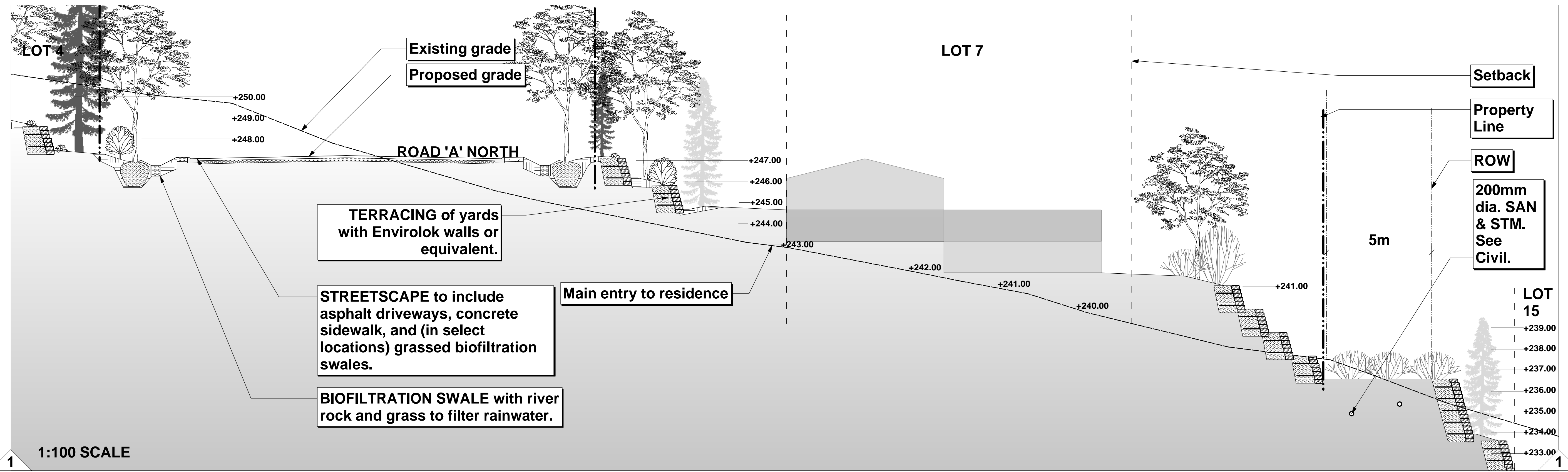
OFFSITE PLANTING PLANT PALETTE B



CONNECTION TO THE EXISTING TRAILS (Chairlift Place).

ID	OFFSITE	Scheduled		
AM	Acer rubrum 'October Glory'	Morgan Red Maple	44	6cm cal B & B
CJ	Cercidiphyllum japonicum	Katsura Tree	17	6 cm cal B & B
DF	Pseudotsuga menziesii	Douglas fir	2	2.0M ht B & B
TP	Thuja plicata	Western redcedar	8	2.0M Ht. B & B
Ac	Acer circinatum	Vine maple	140	2M ht. B & B
CF	Cornus florida	Flowering Dogwood	80	#10 pot. Cont.
Fe	Fraxinus excelsior 'Gold Cloud'	Golden Ash	6	5cm cal B & B
Fpl	Fraxinus pennsylvanica 'Leprechaun'	Leprechaun Green Ash	22	6cm cal B & B
PmA	Picea mariana Aureovariegata	Mariana Spruce	61	2.5m full ht B&B B & B
Pn	Pinus nigra 'Select Green'	Austrian Pine	20	2.0M ht B & B
DF	Pseudotsuga menziesii	Douglas fir	55	2.0M ht B & B
TP	Thuja plicata	Western redcedar	21	2.0M Ht. B & B
SHRUBS-ONSITE				
Arb	Arbutus unedo 'Compacta'	Strawberry Tree	#2 pot	Cont. Bushy.
Au	Arctostaphylos uva-ursi	Kinnikinnick	#1 pot	Cont.
ACD	Azalea 'Cannon's Double'	Deciduous Azalea	#2 pot	Cont.
Bc	Bergenia cordifolia	Heartleaf Bergenia	#1 pot	Cont.
Bs	Blechnum spicant	Deer Fern	#1 pot	Cont.
Ct az	Choisya ternata 'Aztec Pearl'	Aztec Pearl Mexican orange	#3 pot	Cont.
Cs-H	Cornus sericea 'Hedgerow Gold'	Red-Twig Dogwood	#2 pot	Cont.
CsR	Cotoneaster salicifolius 'Repens'	Spreading Willowleaf Cotoneaster	#2 pot	Cont.
C	Crococsmia sp. Dwarf	Dwarf Crocosmia	#1 pot	Cont.
Ff	Forsythia x intermedia 'Fiesta'	Fiesta Forsythia	#2 pot	Cont.
Fi	Gaultheria shallon	Salal	#1 pot	Cont.
Gar	Geranium andresii	Perennial Geranium	#1 pot	Cont.
Ham-J	Hamelis mollis 'Jelena'	Orange Chinese Witchhazel	1.0m full	Cont. Big and bushy
Hes	Helictotrichon sempervirens 'Sapphire'	Blue Oct Grass	#3 pot	Cont.
Hdi	Holdoliscus discolor	Oceanspray	#2 pot	Cont.
Hq-L	Hydrangea quercifolia 'Little Honey'	Dwarf Golden Oakleaf Hydrangea	#5 pot	Cont.
Jnan	Juniperus procumbens 'Nana'	Dwarf Japanese Garden Juniper	#2 pot	Cont.
Loci	Lonicera ciliosa	Western Trumpet Honeysuckle	#1 pot	Cont.
Ln	Lonicera nitida 'Red Tips'	Red Tip Honeysuckle	#3 pot	Cont.
Oace	Oenothera ceriseiformis	Indian plum	#2 pot	Cont.
Ov	Origanum vulgare 'Gold Tip'	Ornamental oregano	#1 pot	Cont.
Pp	Pachysandra procumbens	Allegheny Saurce	#1 pot	Cont.
Ph	Parthenocissus henryi	Chinese Virginia Creeper	#1 pot	Cont.
PhD	Physocarpus opulifolius 'Diablo'	Diablo Ninebark	#5 pot	Cont.
Mp	Pinus mugo 'wintergold'	Golden Mugo Pine	#15 pot	Cont., 80cm height
Pm	Polystichum munifolium	Sword Fern	#1 pot	Cont.
R-U	Rhododendron 'Unique'	Unique Rhododendron	#5 pot	Cont., White, 4ft tall species
Rn	Rosa nutkana	Nootka rose	#2 pot	Cont.
Rno	Rosa 'Noara'	Flower Carpet Red Groundcover Rose	#3 pot	Cont.
Rcal	Rubus caticinoides (R. pentalobus)	Creeeping Bramble	#1 pot	Cont.
S	Salvia sp.	Sage	#1 pot	Cont.
Sed-P	Sedum purdeyi 'Purple Emperor'	Purple Emperor Stonecrop	#1 pot	Cont.
Sj S	Spiraea japonica 'Shirobana'	Shirobana Spiraea	#2 pot	Cont.
Sa	Symphoricarpos alba	Snowberry	#2 pot	Cont.
Tbr	Taxus baccata 'Repandens'	English Weeping Yew	#3 pot	Cont.
Txm	Taxus x media 'Hills'	Hills Yew	1.25 m ht	B&B
Txc	Thymus x citriodorus 'Gold Edge'	Golden Lemon Thyme	#1 pot	Cont.
SHRUBS OFFSITE (INCLUDING)				
Cal	Carex 'Evertime'	Golden Sedge Grass	#1 pot	Cont.
Ecbg	Echinacea 'CBG Cone 2'	Pixie Meadowbrite Coneflower	#1 pot	Cont.
Ea c	Euonymus alata 'Compacta'	Dwarf burning bush	#3 pot	Cont.
Fc	Fragaria chiloensis	Coastal Strawberry	#1 pot	Cont.
Gs	Gaultheria shallon	Salal	#1 pot	Cont.
RrHH	Rosa rugosa 'Henry Hudson'	Henry Hudson Dwarf Var. Rose	#2 pot	Cont.
Sed-C	Sedum album 'Coral Carpet'	Coral Carpet Stonecrop	#1 pot	Cont.
SG	Spiraea 'Goldmound'	Goldmound Spiraea	#2 pot	Cont.
GROUNDCOVER				
Assorted perennials selected by Landscape Architect for each property			30	#1 pot Cont.

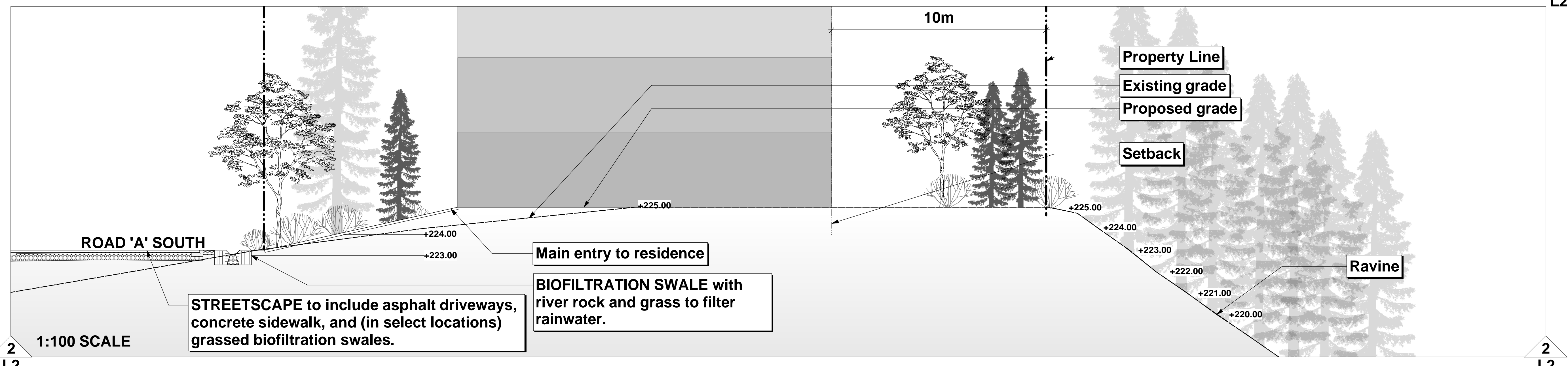
- LANDSCAPE NOTES**
- Sizes on the planting plan shall be considered minimum sizes.
 - All landscape construction to meet the current edition of the British Columbia Landscape Standards as a minimal acceptable standard. Plant material to the satisfaction of the Landscape Standards for nursery stock. Extend search for plant material to Washington, Oregon, California, and B.C.
 - Root balls to be free of pernicious weeds.
 - Top soil mixtures for the project shall be tested for particle size, Ph, and Nutrient levels, and recommendations provided and amendments made to bring the soil up to acceptable horticultural quality for the desired plant material, trees, or turf planting. Off slab, min. soil depths are 6" for lawn areas, 18" for shrub beds and ground cover plantings. Install 2 inches of composted organic mulch on all shrub beds after planting and rake smooth.
 - Provide positive grades away from buildings and toward lawn drains and catch basins. Slope away from building at a minimum of 2%. The prepared sub-grade shall be approved by the Consultant prior to application of top soil mixtures and finish grading. Slope towards lawn basins at min. 4%.
 - Landscape Contractor is to provide 55 days of maintenance after the date of Substantial Completion. Maintain to level 2 'Groomed' as per British Columbia Landscape Standards. Contractor to provide a one year guarantee for all plant material. Plants installed prior to June (Between Jan 1 and June 1) shall be under extended warranty until the June 1 of the following year.
 - Protection of existing trees/shrubs to remain: Install temporary tree protection fencing at drip line of existing hedges, trees, and shrub beds which are to remain. Maintain the fencing during construction. No storage of materials or equipment, or any other activities are allowed within the protection zone during construction until final landscape work is being done in the vicinity. Remove protective fencing and landscape as directed.
 - Planting material on City Boulevard to have the approval of the Parks Dept. prior to installation. Size, species and location require approval at the time of installation.
 - All landscaping to have high efficiency irrigation system to IAABC standards.



1:100 SCALE

1
L2

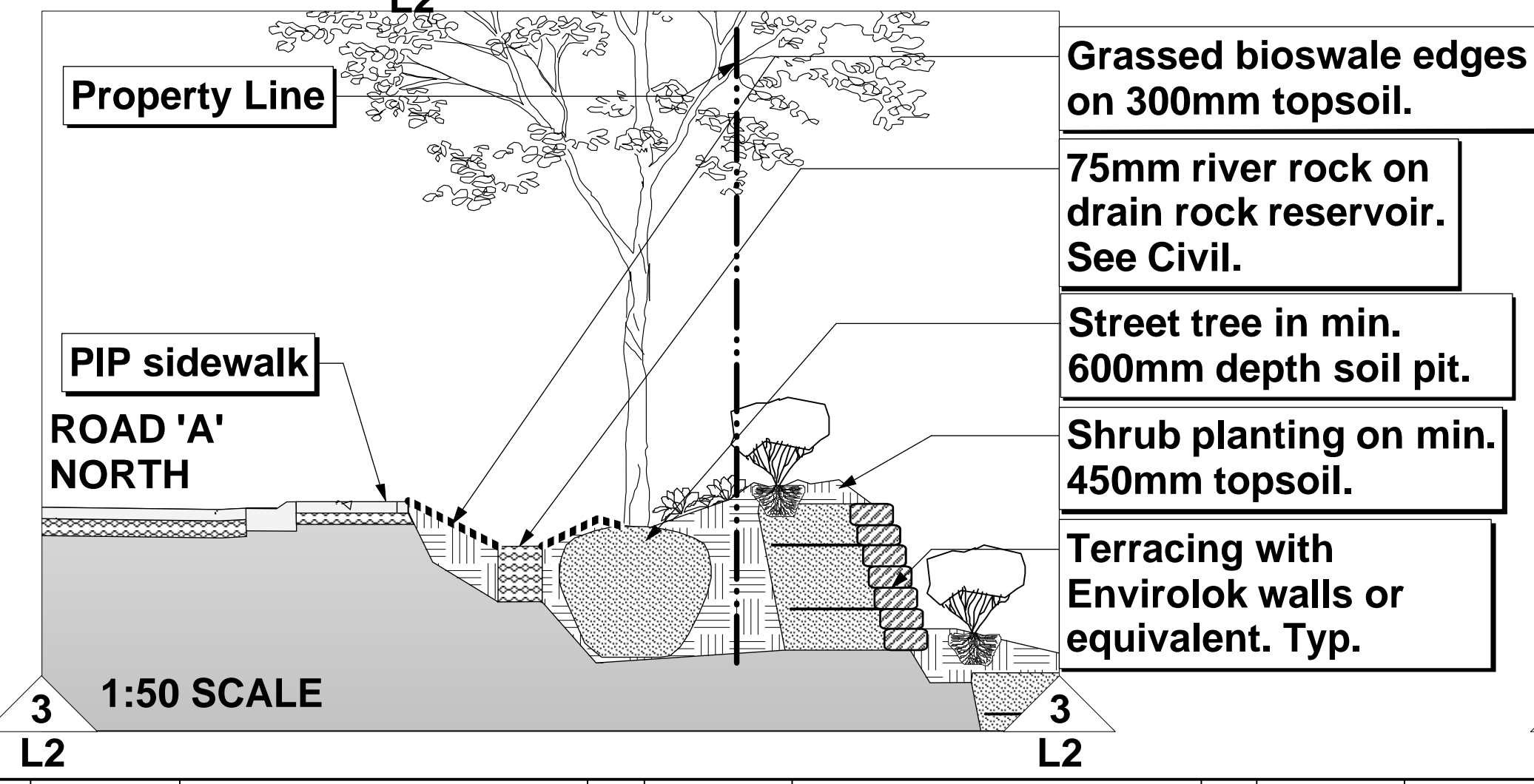
1
L2



1:100 SCALE

2
L2

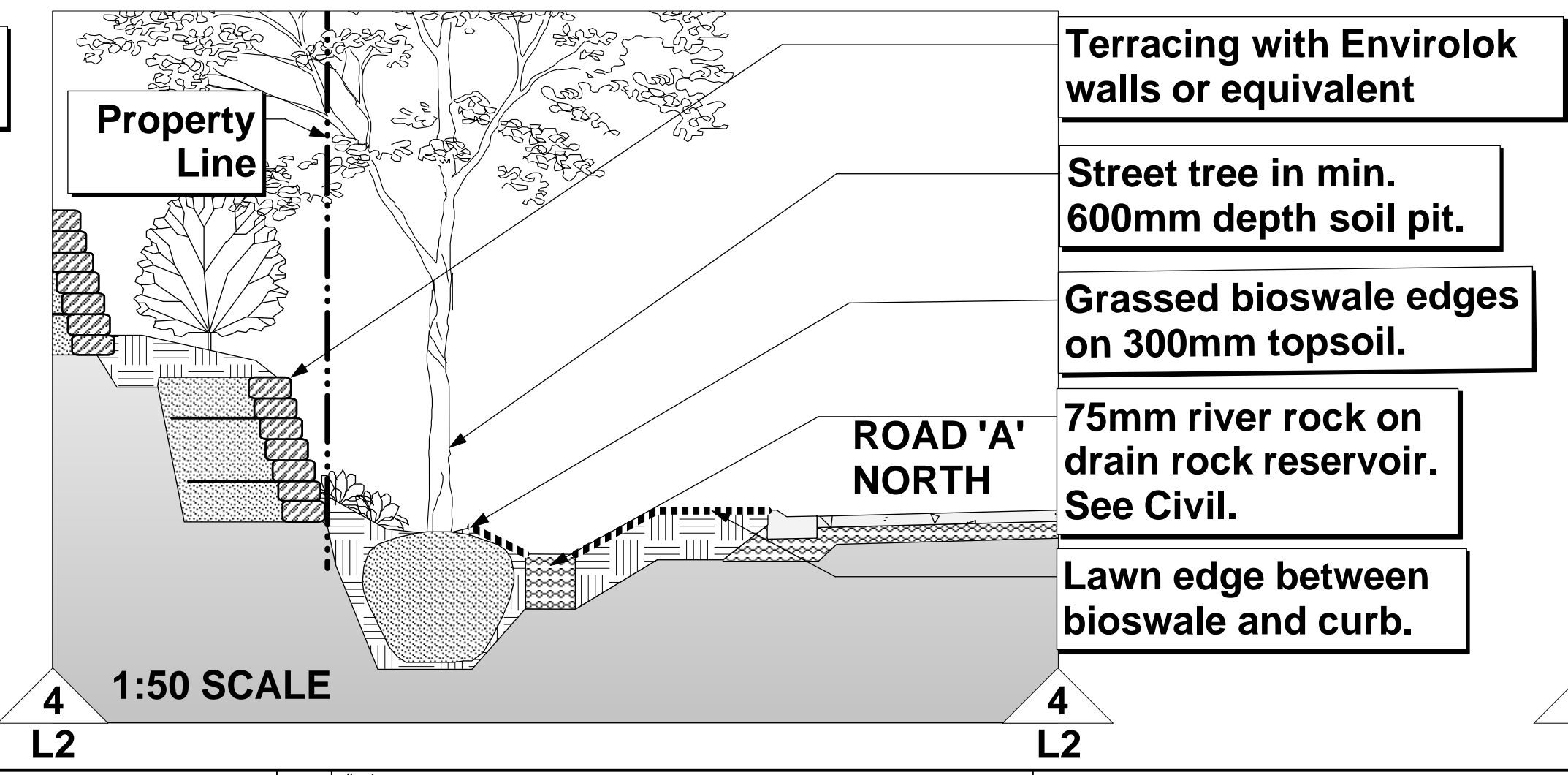
2
L2



1:50 SCALE

3
L2

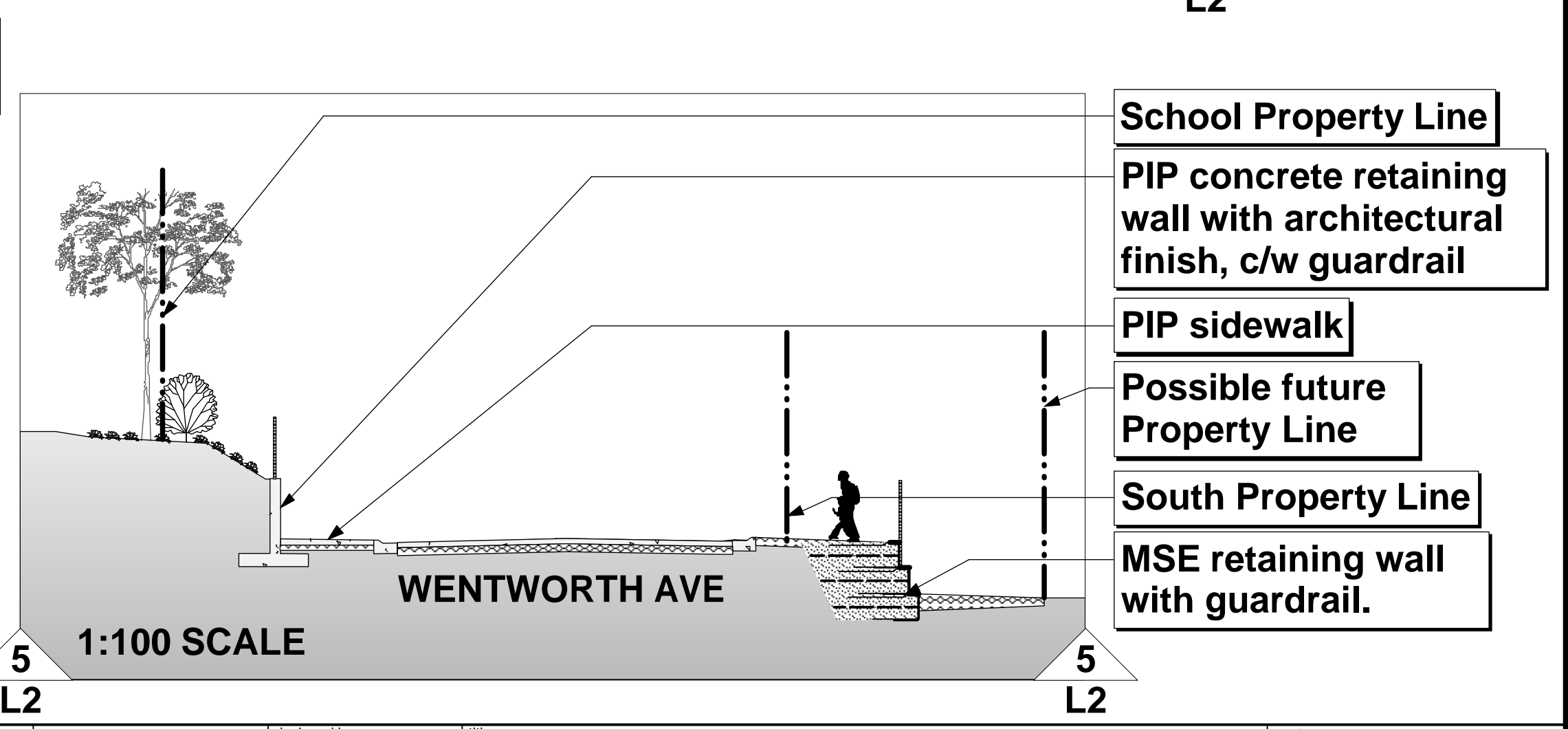
3
L2



1:50 SCALE

4
L2

4
L2



1:100 SCALE

5
L2

5
L2

		Apr 28.17	Resubmit for DP Application	Mar 24.16	Resubmit for DP Application	client	Jonathan Losee Ltd.	designed by	JLL	title	scale:	1:100
		Apr 07.17	Resubmit for DP Application	Mar 23.16	For Client Review		Landscape Architecture	drawn by	JLL		file no.	2015-21
		Jan 30.17	Resubmit for DP Application	Jun 22.15	For Subdivision & DP Application	project	WENTWORTH	checked by	JLL		drawing no.	L2
May 18.17	Resubmit for DP Application	Aug 04.16	Resubmit for DP Application	Jun 22.15	For Client Review	15171 - Westmount Collingwood West Vancouver, BC	#102 - 1661 W. 2nd Ave. Vancouver, B.C. V6J 1H3 Ph: 604-669-1003 Fax: 604-669-0402 E-mail: info@jonathanlosee.com	date	June 2015			

SCHMATIC SECTIONS