



FACTS & STATS

Our Community by the Numbers

Last revised: January 2014

Population by Age & Gender

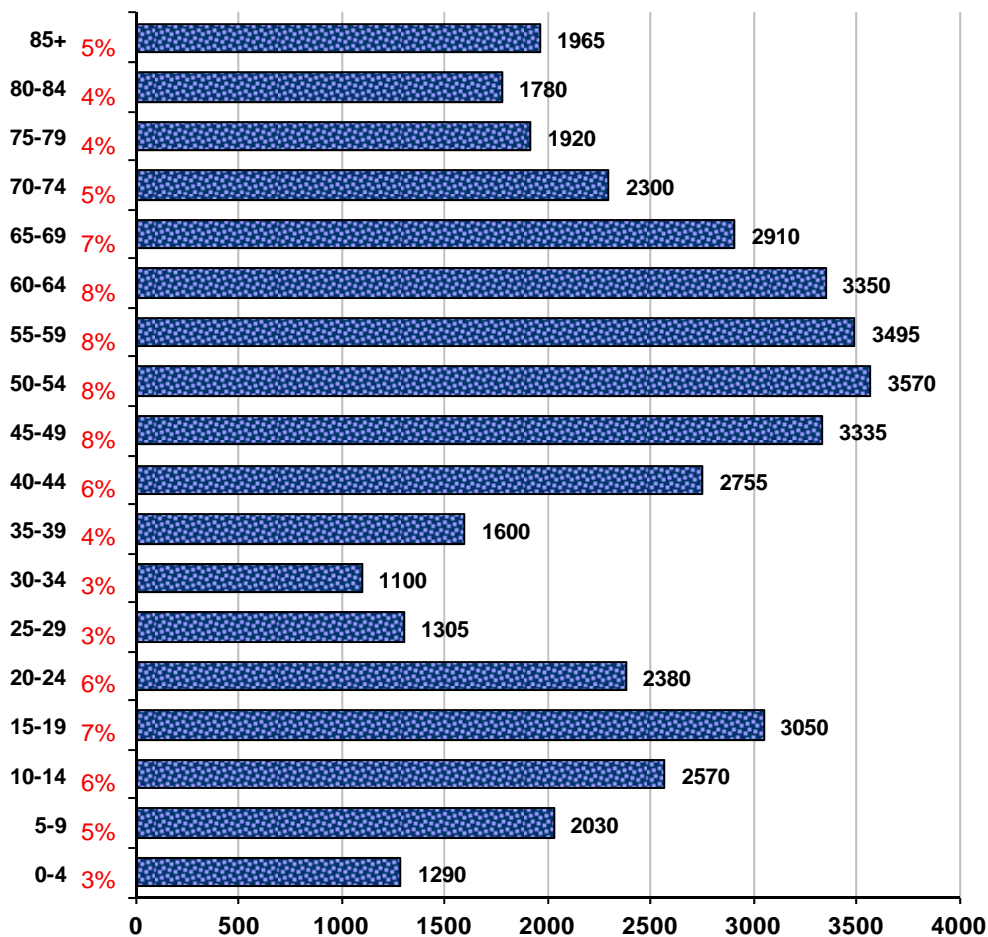
Population Age Distribution

“Population by Age and Gender in West Vancouver” is one in a series of Facts and Stats reports on demographics and trends. The primary data source for this report is the 2011 Census, but data is also drawn from other sources, which are indicated where applicable.

This publication looks at population age distribution, population by gender and population by age and gender. Data on West Vancouver’s nine census tracts is provided and a discussion of historical trends and regional context is also included.

West Vancouver has a total population of 42,695 (2011). The largest population groups in West Vancouver are the four 5-year age cohorts spanning the years 45 to 64.

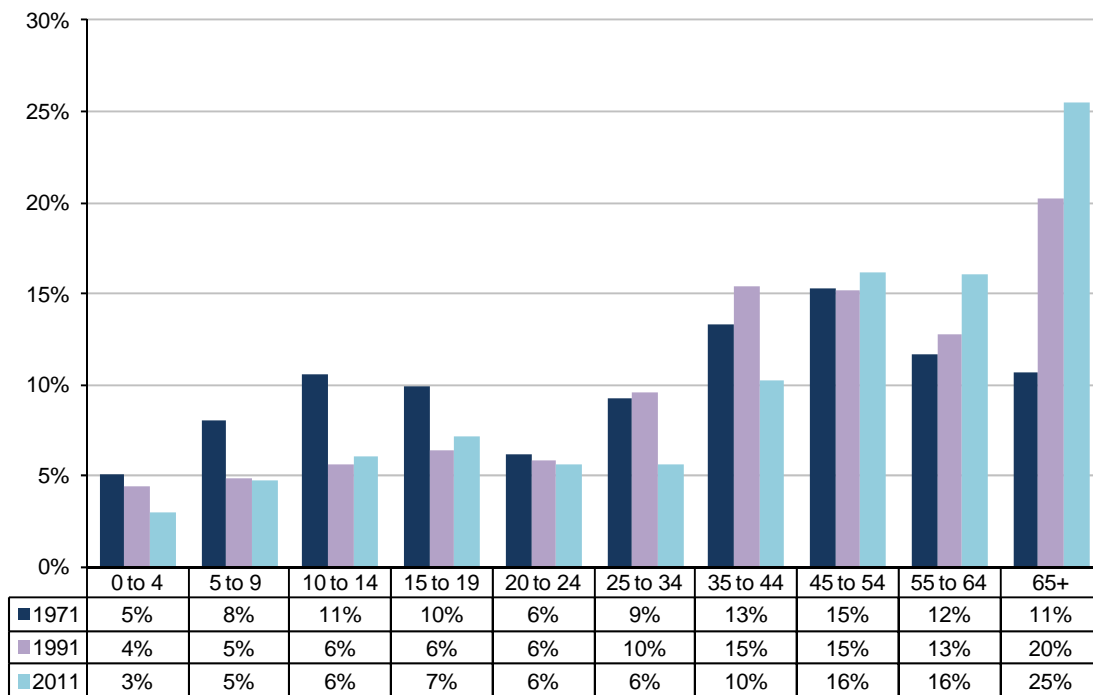
Chart #1 - Population Age Distribution in West Vancouver, 2011



Historical Trends

As illustrated in Chart #2, West Vancouver’s population age profile has shifted over the decades from a higher proportion of families with young children and teens in the 1970s to a greater proportion of older residents in recent decades.

Chart #2 - Population Age Distribution in West Vancouver 1971, 1991 & 2011



Note: Data in 5 year age groupings is not available in the older age ranges for 1971 and 1991 census years and therefore a combination of 5 and 10 year grouping is used in this chart.

Table #1 - Population Age Distribution in West Vancouver from 1961 – 2011

	1961	1966	1971	1976	1981	1986	1991	1996	2001	2006	2011
0 to 4	2,319	2,275	1,850	1,315	1,380	1,485	1,695	1,555	1,365	1,325	1,290
5 to 9	2,626	3,160	2,935	2,195	1,670	1,710	1,895	2,205	2,090	1,970	2,030
10 to 14	2,674	3,329	3,840	3,210	2,480	2,000	2,155	2,495	2,825	2,780	2,570
15 to 19	1,952	3,011	3,595	3,940	3,280	2,635	2,455	2,770	2,950	3,280	3,050
20 to 24	926	1,676	2,255	2,665	2,570	2,410	2,240	2,170	2,175	2,285	2,380
25 to 34	2,437	2,759	3,380	3,925	3,835	3,770	3,725	3,325	2,790	2,380	2,400
35 to 44	4,269	4,943	4,860	4,600	4,895	5,555	5,970	5,640	5,085	4,630	4,355
45 to 54	3,792	4,890	5,570	5,720	5,135	5,000	5,905	7,295	7,370	7,160	6,910
55 to 64	1,988	2,854	4,250	4,880	4,905	5,155	4,925	4,880	5,660	6,620	6,840
65+	2,471	3,090	3,865	4,930	5,570	6,550	7,835	8,530	9,115	9,690	10,865
Total	25,454	31,987	36,400	37,380	35,720	36,270	38,800	40,865	41,425	42,131	42,690

Regional Trends

The aging trend in West Vancouver's population profile reflects broad trends occurring regionally, provincially and nationally (associated with the aging of the baby boomer population and declining birth rates). The trend has been more pronounced in West Vancouver than in most other communities in the region.

As illustrated in Table #2, West Vancouver has the second highest proportion of residents age 65+ at 25% of the population (second to White Rock at 29%), and compared to 14% in the region as a whole. West Vancouver also has the third highest median age at 50, up from 47 in 2001. This trend is also consistent with the region, province and nation.

Compared to the region, West Van has proportionally fewer younger adults (20 - 40 yrs) and proportionally more older adults.

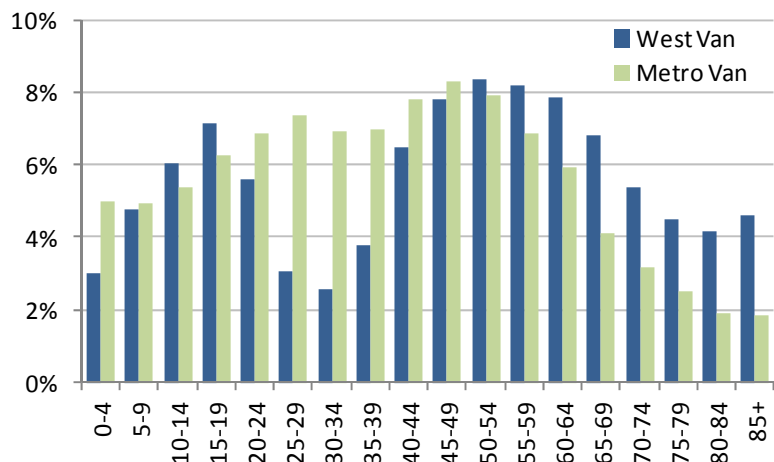
Table #2 - Population Age Distribution, Metro Vancouver Municipalities, 2011

Metro Vancouver Municipalities	2011 Total Population	0 - 19 years	20 - 39 years	40 - 64 years	65+ years	Median Age
Anmore	2,090	30%	19%	44%	7%	41
Belcarra	645	16%	15%	51%	17%	52
Bowen	3,405	24%	15%	46%	15%	47
Burnaby	223,215	20%	30%	36%	14%	40
Coquitlam	126,455	24%	26%	39%	12%	40
Delta	99,865	25%	21%	39%	15%	43
Greater Van A	13,035	25%	35%	31%	9%	33
Langley City	25,085	21%	28%	34%	17%	40
Langley Township	104,175	26%	23%	37%	13%	40
Lions Bay	1,315	20%	16%	47%	17%	49
Maple Ridge	76,050	26%	24%	38%	12%	40
New West	65,975	18%	30%	39%	13%	41
North Van City	48,195	18%	30%	38%	14%	41
North Van District	84,410	25%	20%	40%	16%	43
Pitt Meadows	17,740	25%	26%	37%	12%	40
Port Coquitlam	56,340	25%	26%	39%	10%	39
Port Moody	32,975	25%	28%	38%	9%	38
Richmond	190,475	21%	26%	40%	14%	42
Surrey	468,250	26%	27%	34%	12%	38
Vancouver	603,500	17%	34%	36%	14%	40
West Van	42,695	21%	15%	39%	25%	50
White Rock	19,340	13%	17%	40%	29%	54
Metro Van	2,313,325	22%	28%	37%	14%	40

Table #3 - Population Age Distribution West Van & Metro Van, 2011

	West Van		Metro Van	
TOTAL	42,695	100%	2,313,325	100%
0-4	1,290	3%	115,180	5%
5-9	2,030	5%	114,390	5%
10-14	2,570	6%	124,880	5%
15-19	3,050	7%	145,185	6%
20-24	2,380	6%	159,085	7%
25-29	1,305	3%	170,065	7%
30-34	1,100	3%	160,010	7%
35-39	1,605	4%	161,245	7%
40-44	2,755	6%	180,535	8%
45-49	3,335	8%	192,090	8%
50-54	3,575	8%	182,430	8%
55-59	3,495	8%	158,570	7%
60-64	3,345	8%	136,760	6%
65-69	2,905	7%	94,860	4%
70-74	2,295	5%	72,890	3%
75-79	1,925	5%	58,150	3%
80-84	1,780	4%	44,235	2%
85+	1,965	5%	42,770	2%

Chart #3 - Population Age Distribution West Van & Metro Van, 2011



Population Age Distribution by Census Tract

Tables #4 and #5 show population age distribution in 2006 & 2011 by census tract (CT) in West Vancouver. The maps on the following two pages show the census tract boundaries in West Vancouver and provide a comparison of population age distribution between 2006 & 2011 for each census tract.

Table #4 - Population Age Distribution by Census Tract, 2006

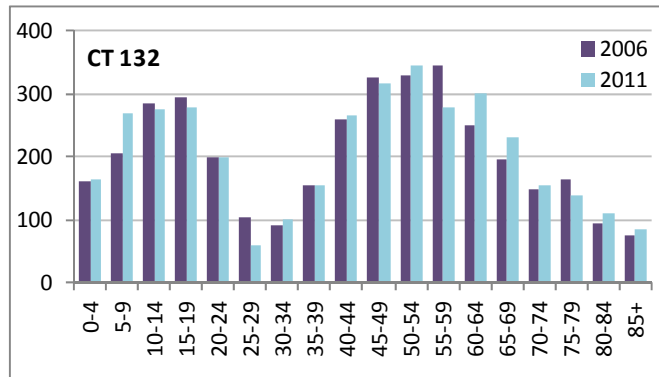
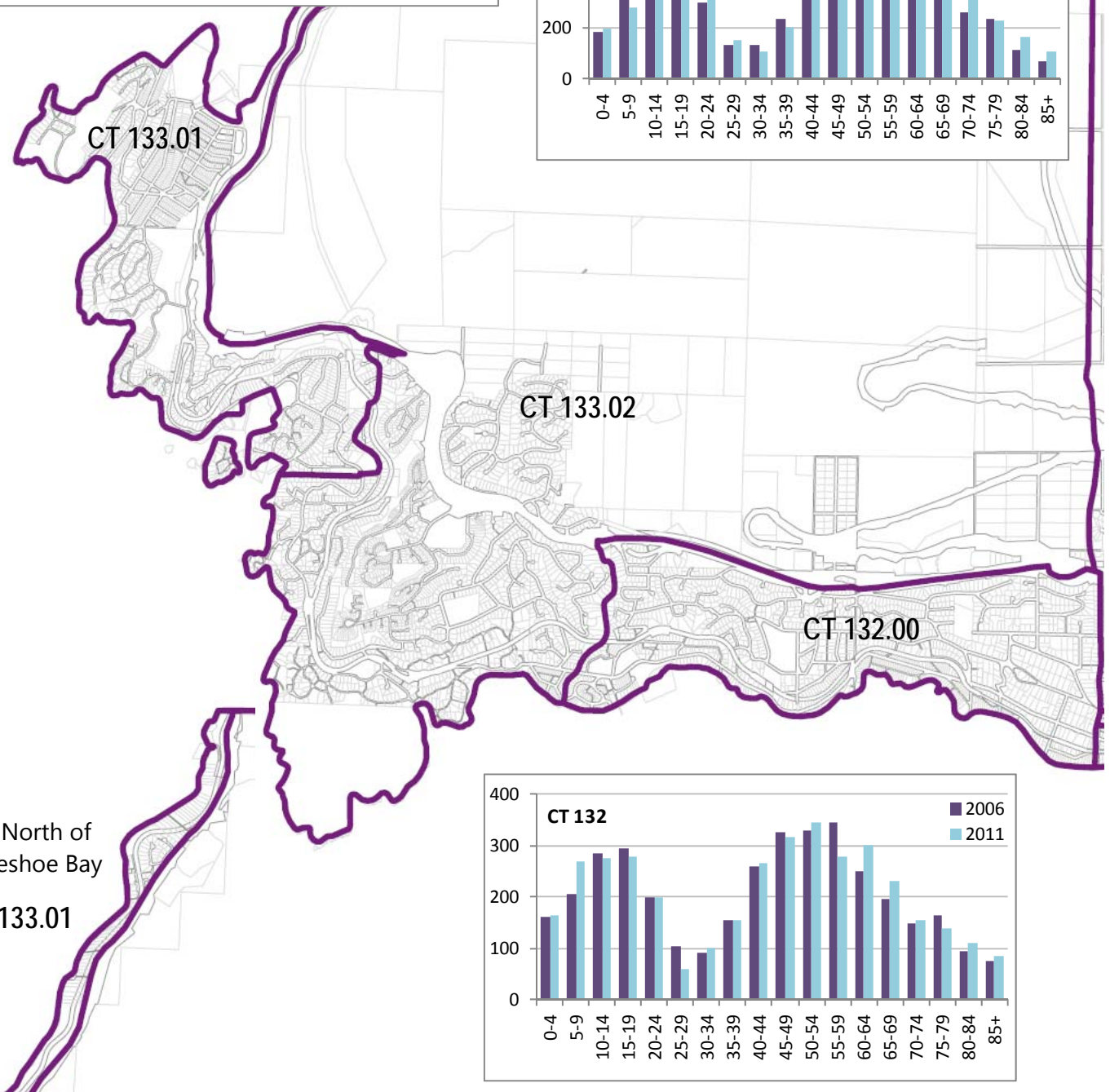
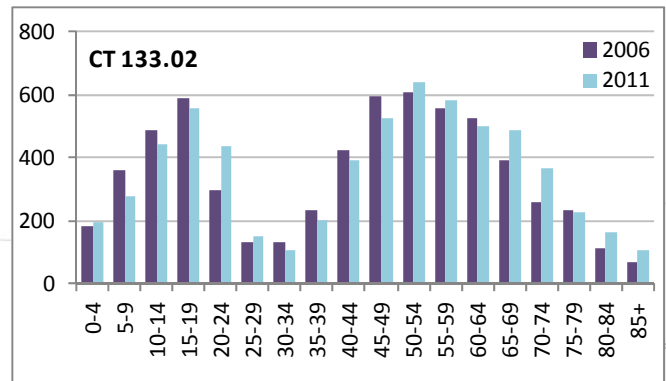
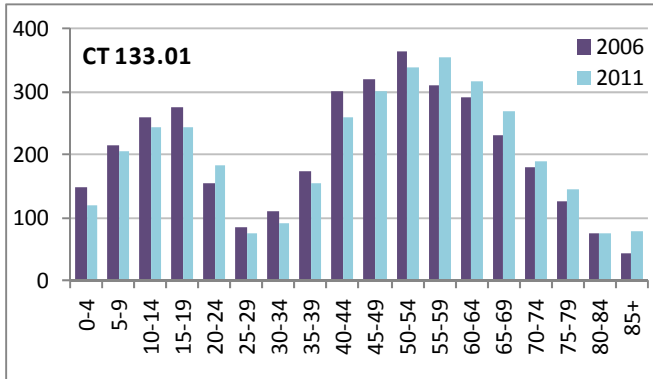
	133.01	133.02	132.00	134.00	135.00	131.00	130.01	130.03	(Cap 5) 130.04
0-4	150	180	160	210	205	280	55	80	85
5-9	215	360	205	315	260	390	95	135	90
10-14	260	485	285	495	330	535	165	215	135
15-19	275	590	295	680	410	620	170	255	215
20-24	155	295	200	550	355	395	125	200	200
25-29	85	130	105	285	200	195	85	145	170
30-34	110	130	90	205	195	175	130	130	150
35-39	175	235	155	300	280	310	170	200	175
40-44	300	425	260	510	360	465	210	280	190
45-49	320	595	325	625	455	585	275	335	225
50-54	365	610	330	670	455	635	330	270	200
55-59	310	555	345	635	460	570	390	335	120
60-64	290	525	250	540	355	420	350	300	115
65-69	230	395	195	410	265	315	320	295	90
70-74	180	260	150	335	195	295	340	270	80
75-79	125	235	165	280	200	280	385	340	90
80-84	75	115	95	210	150	250	435	335	60
85+	45	70	75	170	100	305	440	385	100
Total	3650	6190	3660	7410	5235	7015	4480	4500	2490

Table #5 - Population Age Distribution by Census Tract, 2011

	133.01	133.02	132	134	135	131	130.01	130.03	(Cap 5) 130.04
0-4	120	195	165	200	210	255	65	75	85
5-9	205	280	270	350	300	420	75	135	105
10-14	245	440	275	465	345	510	110	180	110
15-19	245	555	280	605	410	540	150	255	180
20-24	185	435	200	535	325	415	115	170	220
25-29	75	150	60	345	225	215	95	150	195
30-34	90	110	100	215	175	180	90	135	160
35-39	155	200	155	290	240	275	120	175	185
40-44	260	390	265	515	370	515	190	250	190
45-49	300	525	315	630	440	530	240	345	220
50-54	340	640	345	655	430	585	240	340	240
55-59	355	580	280	660	405	575	320	310	175
60-64	315	500	300	575	410	520	390	340	175
65-69	270	485	230	505	290	400	400	335	115
70-74	190	365	155	365	230	310	375	315	110
75-79	145	230	140	290	155	295	380	300	80
80-84	75	165	110	230	155	270	445	330	55
85+	80	105	85	205	110	365	585	415	90
Total	3645	6335	3730	7630	5240	7175	4385	4550	2700

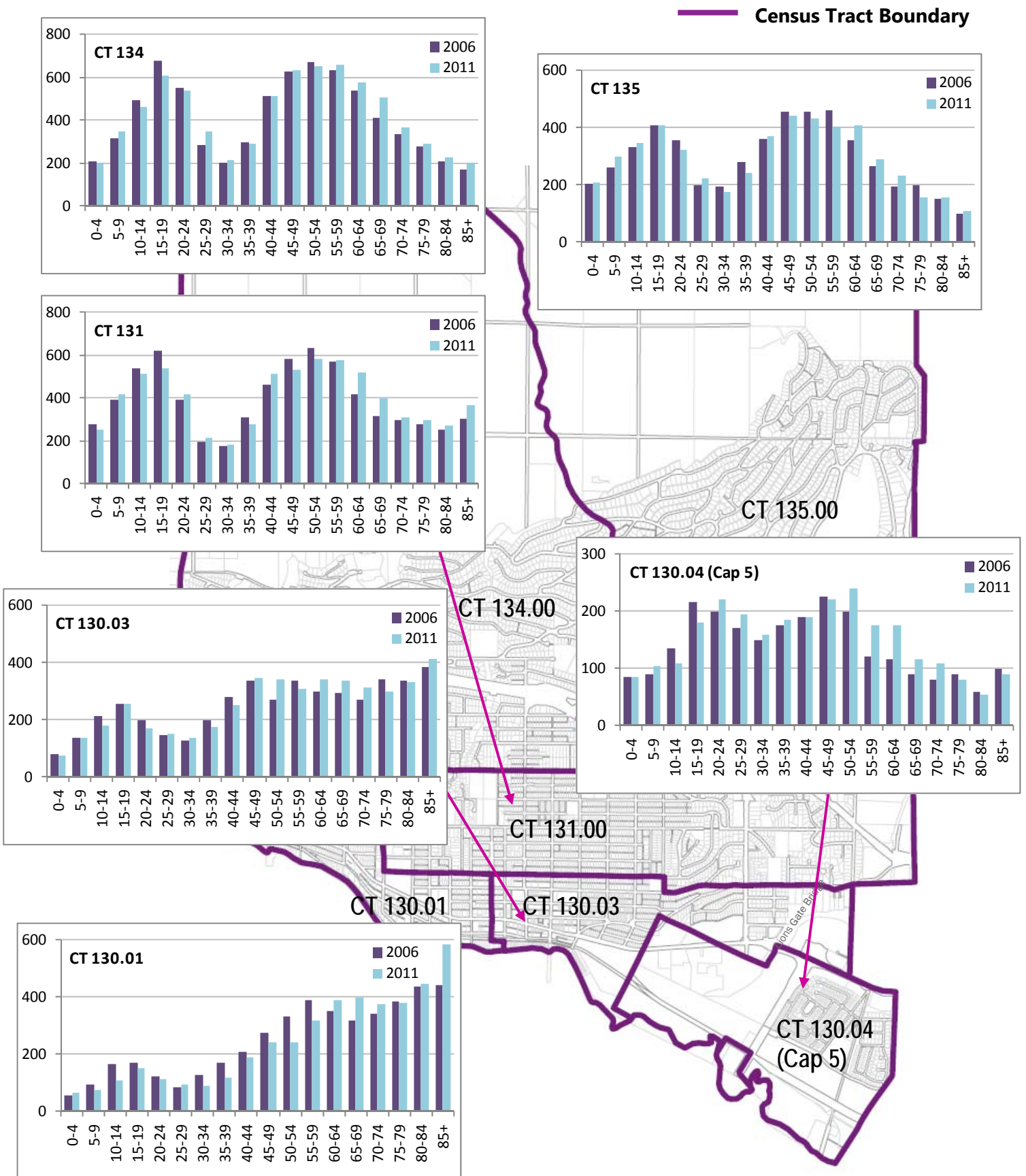


Population Age Distribution by Census Tract





Population Age Distribution by Census Tract



Population Distribution by Age & Gender - Historical Trends

Table #6 - Population Age Distribution by Gender, 2001, 2006, 2011

	2001				2006				2011			
	Male		Female		Male		Female		Male		Female	
Total	19,265	46.5%	22,160	53.5%	19,590	46.5%	22,530	53.5%	19,955	46.7%	22,735	53.2%
0-4 yrs	680	2%	685	2%	670	2%	655	2%	700	2%	590	1%
5-9 yrs	1,055	3%	1,035	2%	1,010	2%	960	2%	1,055	2%	975	2%
10-14 yrs	1,445	3%	1,380	3%	1,410	3%	1,370	3%	1,320	3%	1,250	3%
15-19 yrs	1,495	4%	1,455	4%	1,635	4%	1,645	4%	1,585	4%	1,465	3%
20-24 yrs	1,085	3%	1,090	3%	1,195	3%	1,090	3%	1,230	3%	1,150	3%
25-29 yrs	630	2%	725	2%	575	1%	645	2%	645	2%	660	2%
30-34 yrs	630	2%	805	2%	485	1%	675	2%	465	1%	635	1%
35-39 yrs	855	2%	1,235	3%	745	2%	1,085	3%	625	1%	975	2%
40-44 yrs	1,270	3%	1,725	4%	1,170	3%	1,630	4%	1,155	3%	1,600	4%
45-49 yrs	1,655	4%	1,930	5%	1,550	4%	1,950	5%	1,490	3%	1,845	4%
50-54 yrs	1,795	4%	1,990	5%	1,750	4%	1,910	5%	1,650	4%	1,920	4%
55-59 yrs	1,565	4%	1,605	4%	1,715	4%	1,885	4%	1,670	4%	1,825	4%
60-64 yrs	1,235	3%	1,255	3%	1,485	4%	1,535	4%	1,590	4%	1,755	4%
65-74 yrs	2,070	5%	2,320	6%	2,155	5%	2,275	5%	2,500	6%	2,700	6%
75+ yrs	1,800	4%	2,925	7%	2,040	5%	3,220	8%	2,275	5%	3,390	8%

Table #6 and charts #4 and #5 illustrate the change in West Vancouver’s age profile in 2001, 2006 and 2011 for both females and males.

Females and males follow similar age distribution trends from census to census, with the over 65 age group representing an increasingly larger % and absolute # of the total population, and the under 35 to 55 age group an increasingly smaller % and absolute number of the total population.

Chart #4 - Female Population Age Distribution

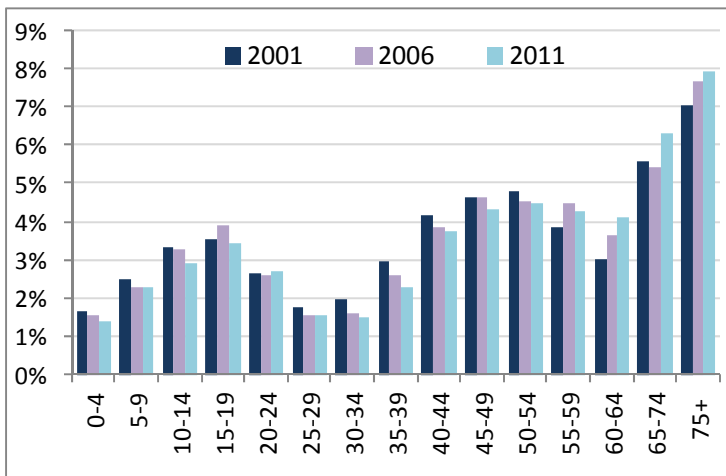
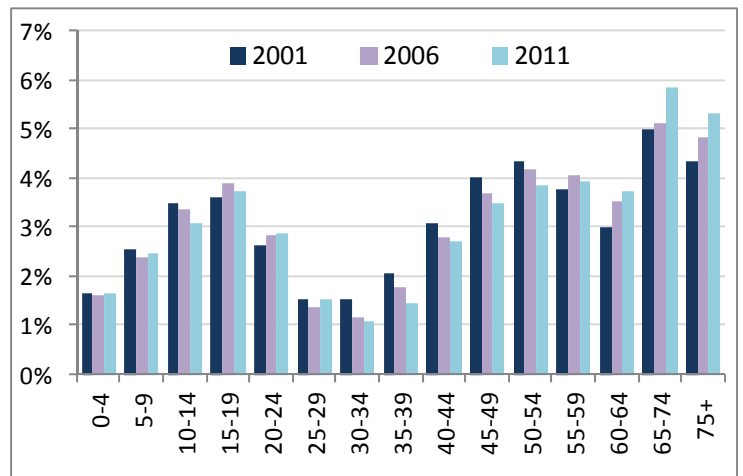


Chart #5 - Male Population Age Distribution



Population Distribution by Age & Gender - Regional Trends

Chart #6 shows that the proportion of females to males is slightly higher in West Vancouver compared to the region as a whole.

Chart #6 - Population by Gender in West Van & Metro Van, 2011

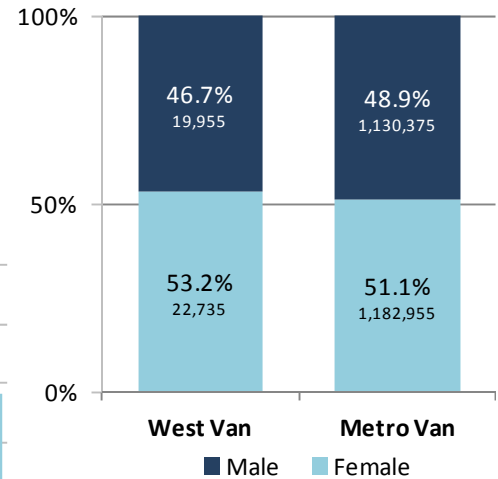
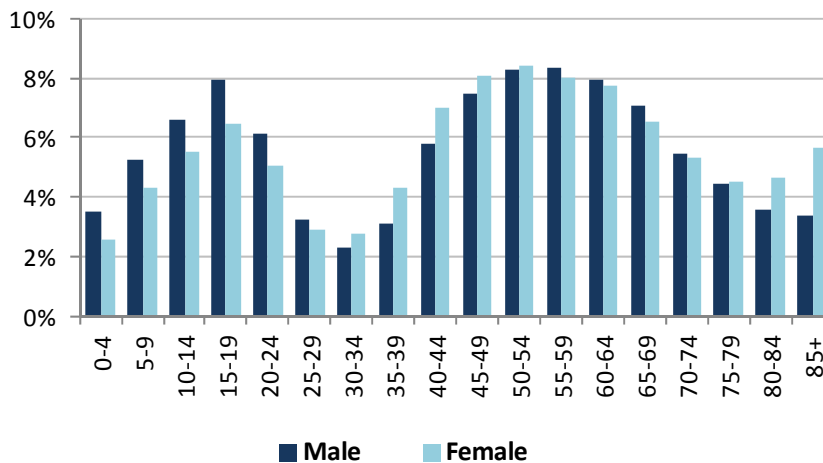
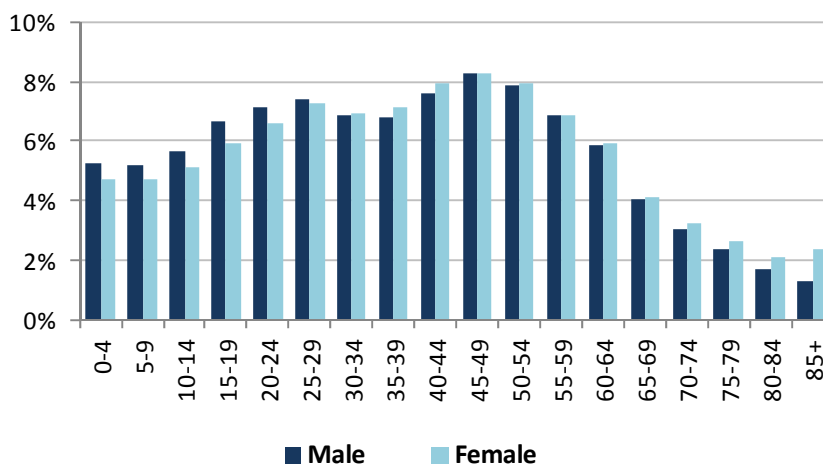


Chart #7 - Population Age Distribution by Gender in West Van, 2011



As illustrated in Charts #7 and #8, although both West Van and Metro Van have a higher proportion of women than men in older age groups (80+), the proportion of women to men is higher in West Vancouver.

Chart #8 - Population Age Distribution by Gender in Metro Van, 2011



West Vancouver also has a noticeably higher proportion of women in the 30-59 age range compared to the region.