

Glenmore Neighbourhood Traffic Calming

Sean O'Sullivan, Senior Manager Roads & Transportation Planning, Design & Projects

April 14, 2025

1 Site Visit and Data



missing sidewalk on Morven Drive



Morven Drive /Glenmore Drive intersection



west side – 4 catch basins need to be adjusted



west side – 4 catch basins need to be adjusted



east side – 1 catch basin need to be adjusted



east side – temporary landscape lighting and irrigation on the boulevard may need to be moved



west side – low retaining walls may be required



east side – mature hedge on the boulevard will be impacted

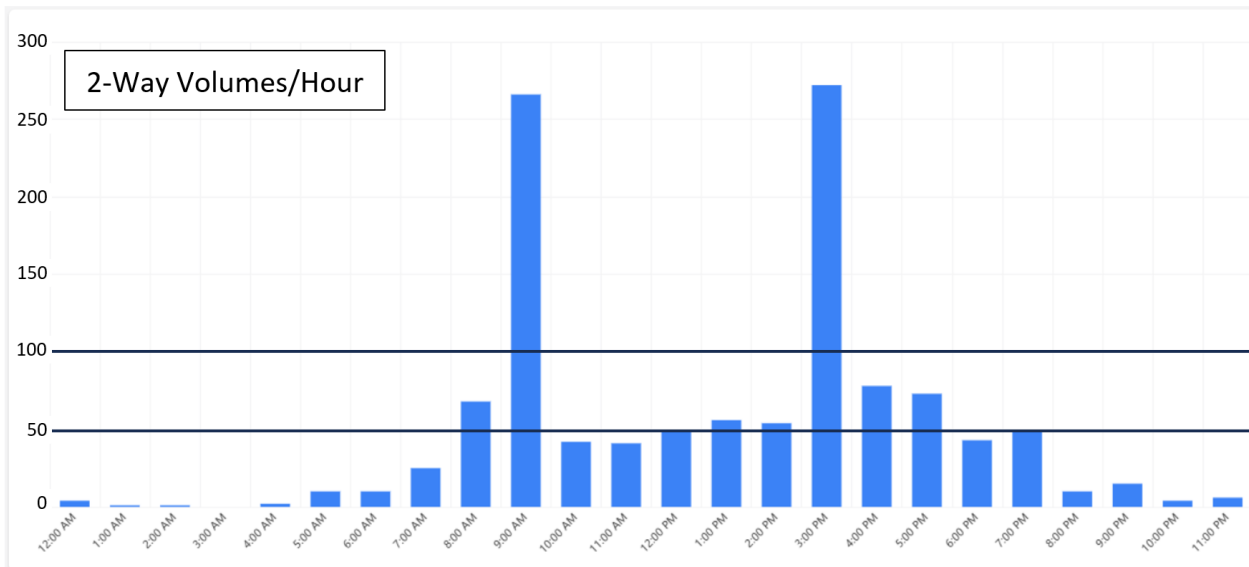


west side – parking at the north end of Glenmore Drive



west side – parking at the south end of Glenmore Drive

Observed Traffic Volumes Wednesday May 29, 2024

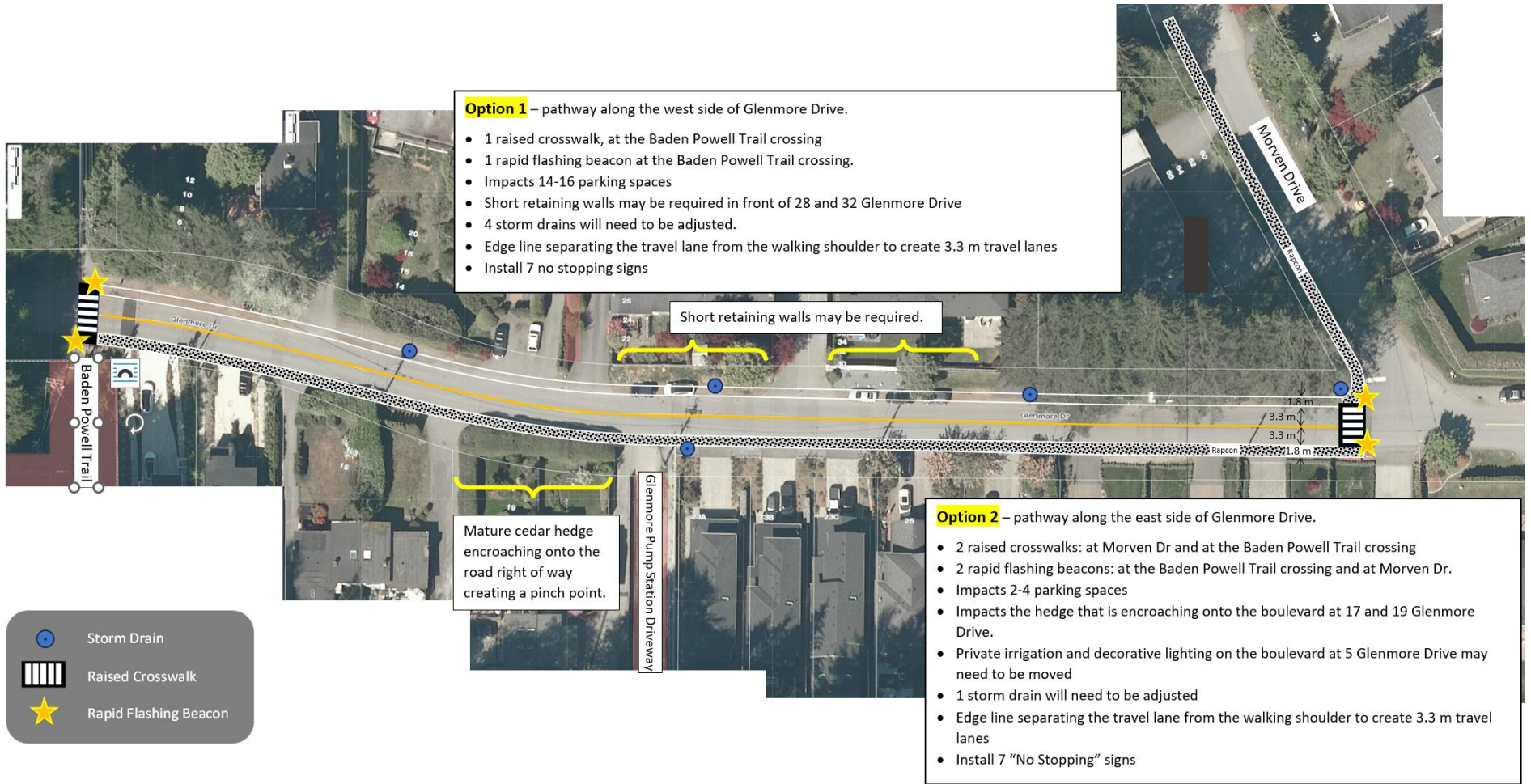


- **average daytime volume - 55 vehicles/hour**
 - 8:00 am to 8:00 pm
 - excluding school pick up and drop off times

Observed Speeds May 25 to 31, 2024

Speed	Percent of Total Traffic
Exceeding the Speed Limit by more than 10 km/hr	0.2%
Exceeding the Speed Limit by 10km/hr or less	4.2%
Speed between 31 km/hr and 50 km/hr	69.1%
Speed less than 31 km/hr	26.5%

2 Recommended Changes



Recommended Option Cost Estimate

Item	Cost	Description
Construction	\$55,288	<u>Includes:</u> Constructing gravel pathway Trimming encroaching vegetation Constructing 2 raised crosswalks Adjusting storm manholes Relocating irrigation and landscape lighting on the boulevard Pavement markings
District to Supply Recycled Material	\$1,000	Recycles asphalt
Install Rapid Flashing Beacons	\$17,000	2 sets of rapid flashing beacons
20% contingency	\$14,658	Accounts for cost increases and unexpected conditions
Total	\$87,946	

Thank You!
Questions?

This page intentionally left blank

This page intentionally left blank