



Community Wildfire Resiliency Plan

Heather Keith, Senior Manager, Climate Action & Environment

December 1, 2025

Presentation Outline

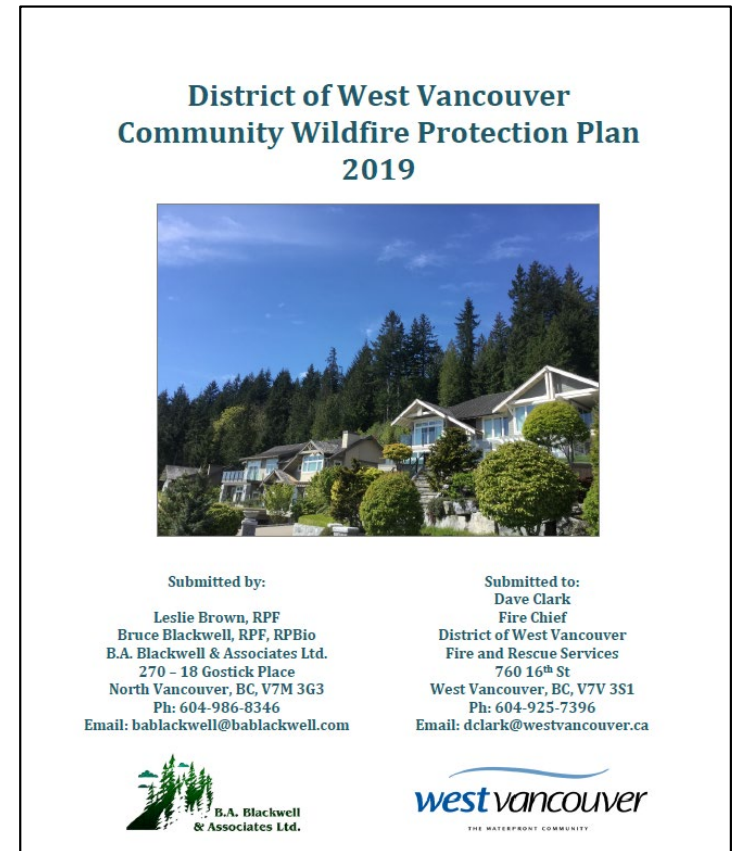
1. **Background**
2. **Plan Development**
3. **Plan Recommendations**
4. **Council Recommendation**

1

Background

Background

- Update to 2019 Community Wildfire Protection Plan.
- Built from progress made since 2019.
- Guided by most recent community comprehensive wildfire planning framework developed by FireSmart BC and BC Wildfire Service.
- Updated fuel type mapping, risk assessment, and fuel treatment identification.



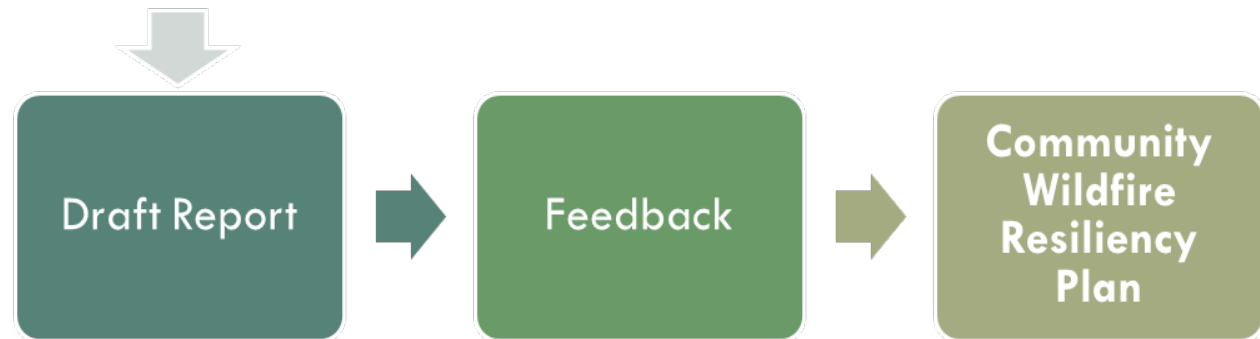
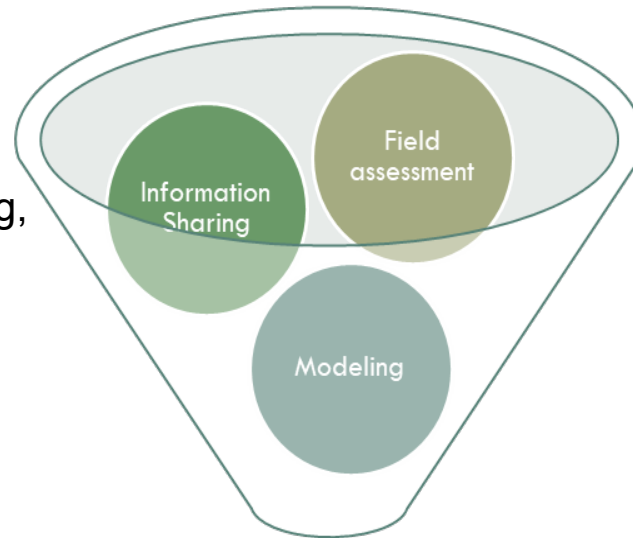
Progress to Date

- Adopted a Wildfire Hazard Development Permit Area.
- Improved WVFR wildfire capacity:
 - Training, equipment, mutual-aid response drills
 - 2 Type 5 wildland trucks
- FireSmart assessments:
 - >140 Homes
 - 30 Critical Infrastructure
 - 4 Neighbourhoods
- Established a North Shore FireSmart and Resiliency Committee.
- Educational campaigns – schools, library, events.
- Fuel Management Prescriptions - 4 high-priority areas, treating 18.6 hectares.
- FireSmart mitigation work on all fire halls.

2 Plan Development

Plan Development

- Planning, Parks, Eng, Fire, Facilities Staff
- NSEM



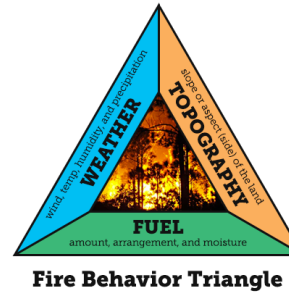
- First Nations
- District Environment Committee
- BC Parks
- BC Wildfire Service

Plan Components

Components:

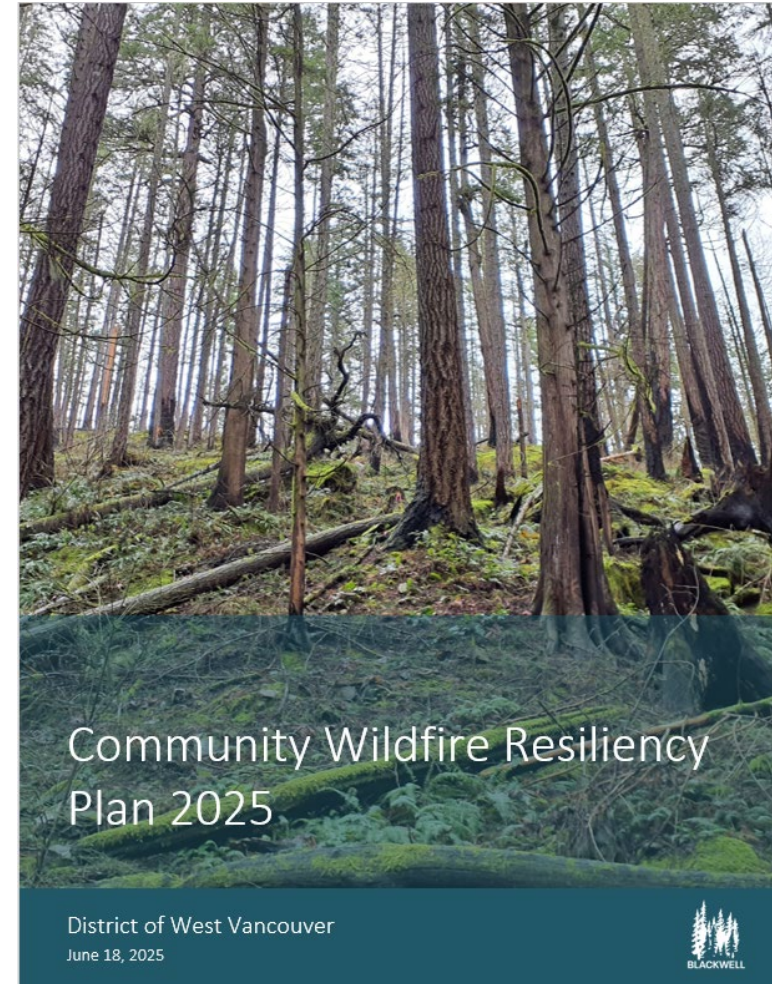
1. Localized risk assessment:

- Locally-identified values-at-risk.
- Spatial wildfire threat analysis using three components of *fire behaviour triangle*: fuel, weather, topography.



2. Action plan:

- Recommendations to improve wildfire resiliency in the community.
- Used to inform community plans, expand emergency response capacity, expand FireSmart education programs, etc.

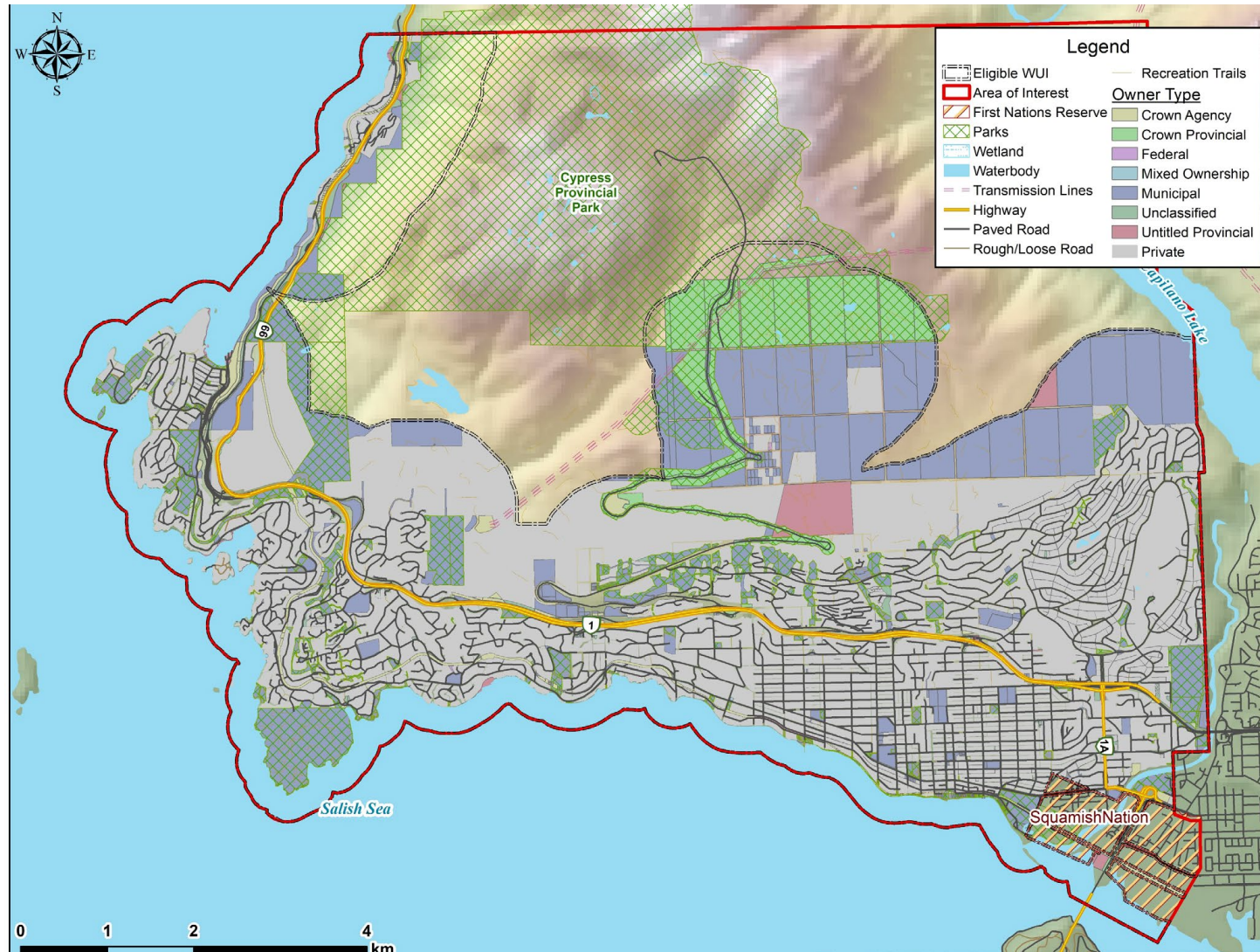


Values-At-Risk

- Critical infrastructure (fire halls, water reservoirs, pump stations, electrical substations).
- Residential structures and other community buildings (schools, facilities, medical services, community and senior centres).
- Archaeological sites, culturally significant sites, and other heritage buildings or sites.
- Environmental values (known critical habitat, species at risk locations, and community watersheds).
- Recreational values.

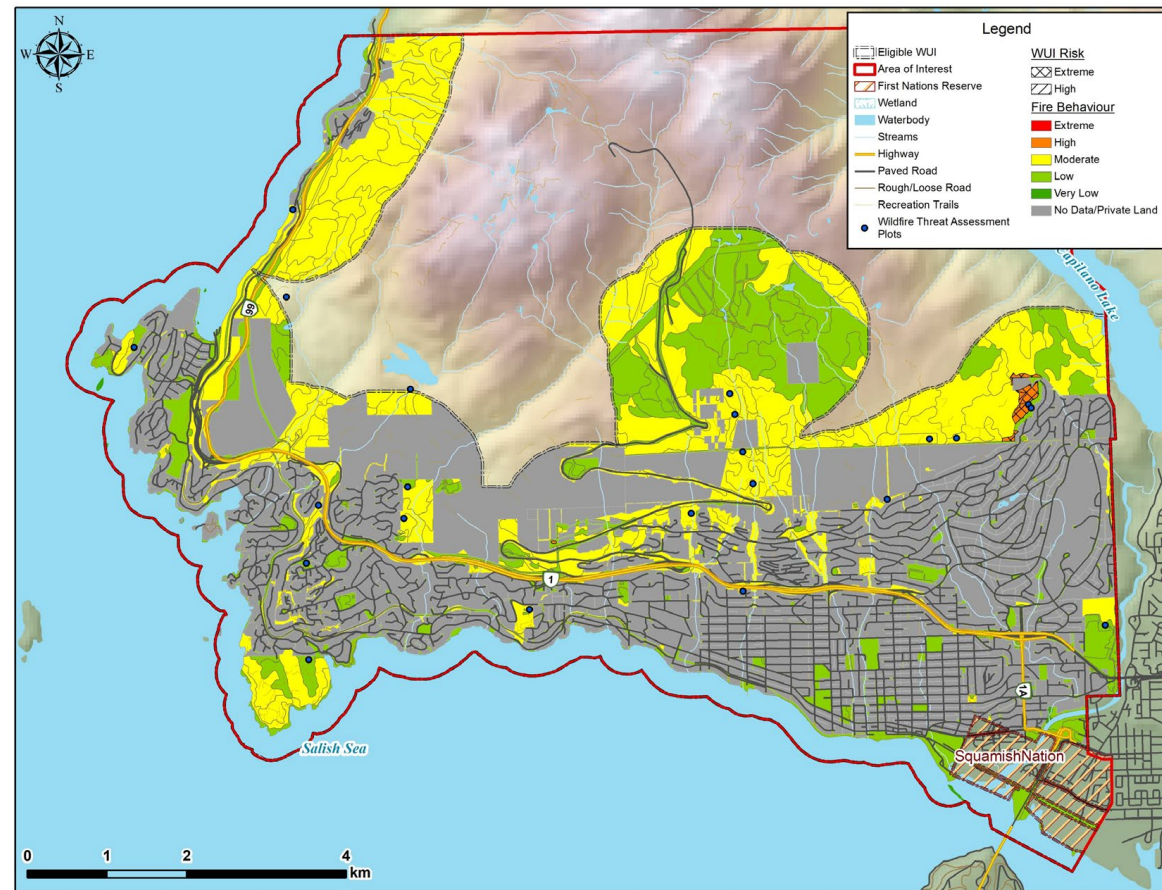
Area of Focus

Wildland Urban Interface (WUI) - zone where structures meet undeveloped forests/vegetative fuels.



Wildfire Threat

- Percentage of “assessable” land (i.e., not private land):
 - <1% High threat
 - 37% Moderate threat
 - 40% Low threat
- Unique risk factors:
 - Extremely high infrastructure value.
 - Complex topography with difficult access.
 - High % of private land – developed and forested areas.
 - Significant human activity in forested areas.



3 Plan Recommendations

Plan Recommendations

- 44 Recommendations – priority, rationale, lead, timeframe, metrics, funding source.
- Strategies to reduce wildfire risk under each *FireSmart Discipline*:
 1. Education (Residents and Tourists)
 2. Legislation and Planning
 - OCP updates
 - FireSmart landscaping
 - Hazards on private property and construction sites
 3. Development – DPA amendments (requirements and spatial extent)
 4. Interagency cooperation
 5. Cross Training & Fire Department Resources (staffing, training, water supply, equipment)
 6. Emergency Planning (fire rehab, access planning, preparedness, communication)
 7. Vegetation Management (fuel management and residential FireSmart)

High Priority Recommendations

- Maintain and expand FireSmart outreach.
- Staffing FireSmart positions.
- Assess and mitigate critical infrastructure hazards.
- FireSmart landscaping (bylaw control, communication).
- Vegetation (fuel) management in municipal parks / green spaces:
 - 8 example areas selected (clean up), used as demonstration sites.
 - Program should be expanded / made available on a request-basis.
- Manage parks proactively.

4 Council Recommendation

Recommendation

THAT:

- the Community Wildfire Resiliency Plan be approved.
- staff be directed to incorporate the recommendations in the Community Wildfire Resiliency Plan into annual workplans and request supportive funding as part of the annual budget process and through external funding sources.