

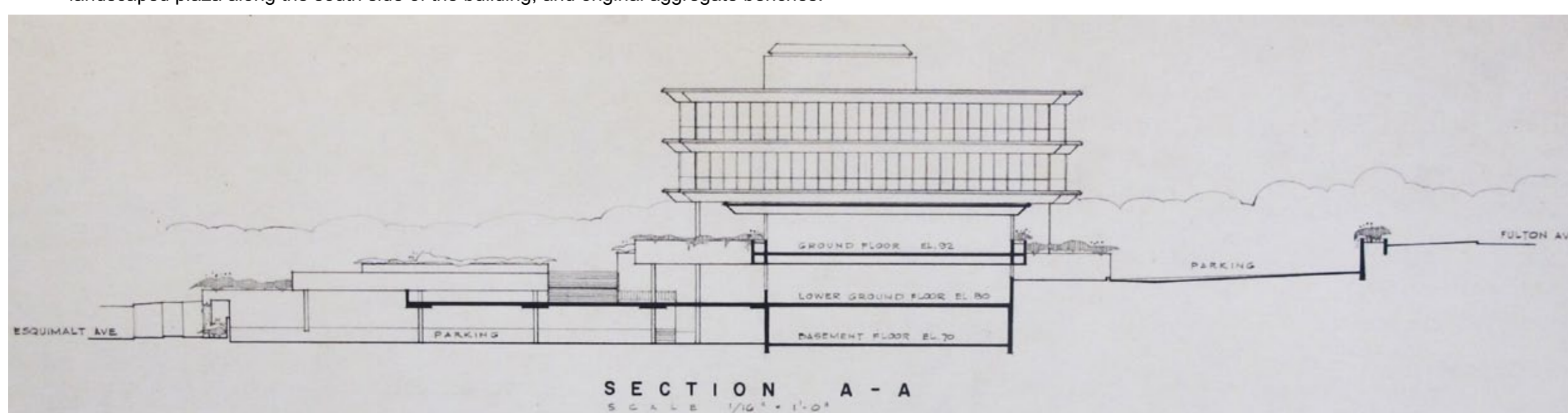
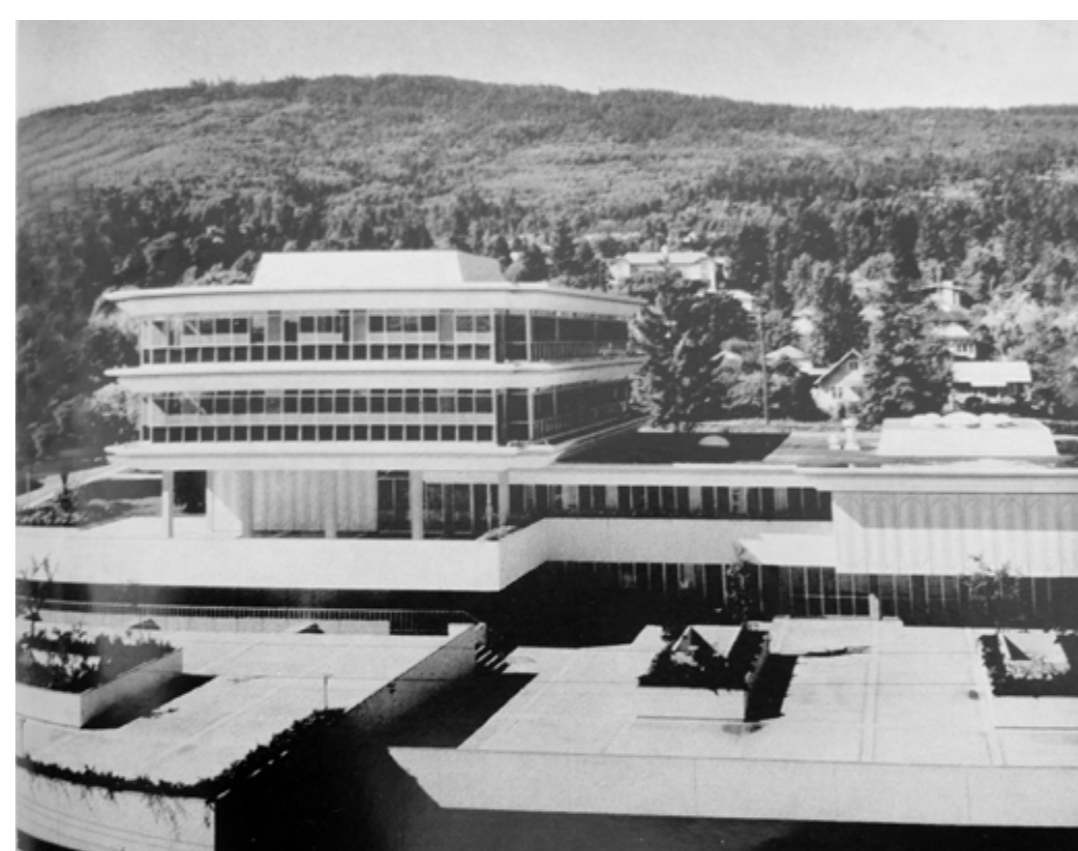
The new West Vancouver Police Services and Municipal Hall Building is being designed as a post-disaster facility. Massing for the new building is organized primarily along a north/south axis. This axis will be developed as a circulation spine and will provide public access to the "one-stop-shop" customer service hub at the same level as the visitor parking to the north. It also serves to divide the new facility into police functions to the east and customer services functions to the west. Shared-use spaces are interspersed throughout.

The customer service hub will also be accessible from the "formal" front door off 17th Street. Generous entry plazas are provided at both the east and west sides of a new multipurpose atrium that links the new facility with the existing municipal hall.

The new facility is comfortably placed within the existing site. The height of the new building is confined to two storeys of programmed space above two levels of underground parking. This will ensure that the existing municipal hall tower will retain its prominence and remain highly visible from 17th Street. A new colonnade of trees will also be included along 17th Street to replace the existing colonnade.

### Organizational Diagram

- The character-defining elements of the District of West Vancouver Municipal Hall include its:
- **location on an entire block** bounded by 17th Street, Esquimalt Avenue, 16th Street and Fulton Avenue in the Ambleside neighbourhood of West Vancouver, that has served as the home of the West Vancouver government since 1912;
  - **steeply sloping site with commanding views** to the Burrard Inlet and North Shore Mountains;
  - **continuous use as the administrative centre** for West Vancouver since 1912;
  - **institutional form, scale and massing**, as expressed by its interlocking horizontal pavilions with flat roofs, with a three-storey office tower block to the west and the one-storey Council Chambers and administrative wing to the east and two lower levels set into the slope;
  - **stylistic elements of the Modern style**, such as its cantilevered upper two storeys of the office tower supported by five exterior columns; white exposed aggregate prefabricated concrete panels with decorative, lozenge-shaped inlaid patterns around the first floor entry and wrapped around the Council Chambers, inside and out, on the southeast side of the building; custom door pulls; and roof edges and floor slabs cantilevered past the wall edges, with sharply-angled soffits;
  - **original aluminum windows**, including fixed panels and operable shutters, set in aluminium frames with mesh sunscreens, designed as an integral part of a curtain wall system with opaque grey glass spandrels;
  - **distinct interior features** such as terrazzo floors with decorative banding; original concrete 'floating' staircase with aluminum handrail and balusters; original full-height wooden doors with custom hardware, located throughout the east wing of the first floor; and decorative opaque circular skylights in the Conference Room, Council Chambers and above the staircase; and
  - **associated landscape features**, such as exterior banding in the concrete paving and landscaped plaza along the south side of the building, and original aggregate benches.



### Heritage Character